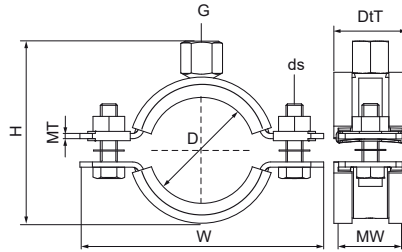


## Walraven Heavy Duty Clamp HD1501 White (M10/12) (BUP1000)

(A10051)

for metal pipes



### Features & benefits

- two-part clamp with two locking bolts
- up to and including 5": locking nut is captive, hidden in plastic holder
- heavy design
- bolts secured with anti-loss washer
- with CO<sub>2</sub> welded connection nut
- material: steel
- surface protection:
  - white (RAL 9003) epoxy powder coating (60 µm)
  - product is part of the Walraven BIS UltraProtect® 1000 system
- suitable for in- and outdoor applications
- stands min. 1,000 hours salt spray test (max. 5% red rust) according to ISO 9227
- sound insulating according DIN 4109
- tested for fire safety



Product Number	Outside Pipe Diameter	DN	Pipe Diameter Imperial	Connection Thread	Total Height	Total Width	Total Depth	Material Width	Material Thickness	Screw Size	Maximum Allowed Load Faz	Approvals
Reference Letter	D	D	D	G	H	W	D <sub>t</sub> T	MW	MT	ds	F <sub>a,z</sub>	
Unit description	mm		"		mm	mm	mm	mm	mm		N	
33149071	65 - 71	-	-	M10/M12	115	137	36	38	3.00	M8	2,300	CE, ETA, ISO 3822-1, EPD
33149078	72 - 78	DN 65	2½	M10/M12	122	144	36	30	3.00	M8	2,300	CE, ETA, ISO 3822-1, EPD
33149085	79 - 85	-	-	M10/M12	129	151	36	30	3.00	M8	2,300	CE, ETA, ISO 3822-1, EPD
33149092	86 - 92	DN 80	3	M10/M12	136	158	36	30	3.00	M8	2,300	CE, ETA, ISO 3822-1, EPD
33149109	101 - 109	-	-	M10/M12	153	175	36	30	3.00	M8	2,300	CE, ETA, ISO 3822-1, EPD
33149116	108 - 116	DN 100	4	M10/M12	160	182	36	30	3.00	M8	2,300	CE, ETA, ISO 3822-1, EPD
33149140	132 - 140	DN 125	5	M10/M12	184	206	32	30	3.00	M8	2,300	CE, ETA, ISO 3822-1, EPD
33149169	159 - 169	DN 150	6	M10/M12	220	255	45	38	4.00	M10	3,800	CE, ETA, ISO 3822-1, EPD