

Finishing set up/down for rotary switch, gold coated

221-65926

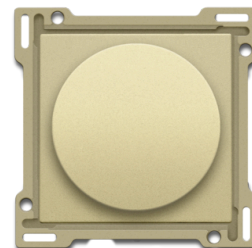


4 year warranty

Central plate with rotary key for roller blind control. The rotary key allows roll-down shutters, for example, to be raised up and lowered. Colour: gold coated.

Technical data

Finishing set up/down for rotary switch, gold coated.



- Function: the central plate is clicked onto the rotary switch. The setting key slides over the control axis of the mechanism
- Material finishing: polycarbonate (PC) + acrylic-styrene-acrylate (ASA)
- Material grip ring: polycarbonate (PC) + polybutylene terephthalate (PBT) and is coloured in mass, dark grey
- Type of control: rotary button
- Colour: gold coated
- Colour RAL (approximately): 1000
- Colour NCS (approximately): NCS S 3020-Y
- Surface treatment: coated
- Imprint indication: the middle of the central plate is indelibly imprinted on the top side. The setting key with scale indication must be positioned directly across from this imprint. The setting key is equipped with a ring on which 'up' and 'down' are indelibly imprinted, and it is mounted over the control axis of the pulse generator
- Number of lenses: 0
- Dismantling method: pull the central plate off the mechanism
- Minimum ambient temperature: 5 °C
- Maximum ambient temperature: 40 °C
- Protection degree: IP41 for the combination of a mechanism, central plate and faceplate
- Impact resistance: the combination of a mechanism, a central plate and a faceplate has an impact-resistance of IK06
- Fire safety:
 - all plastic components are self-extinguishing (comply with a filament test of 650°C)
 - all plastic components are halogen-free
- Dimensions of finishing: 45 x 45 mm (HxW)
- Dimensions (HxWxD): 55.8 mm x 55.8 mm x 21 mm
- Marking: CE