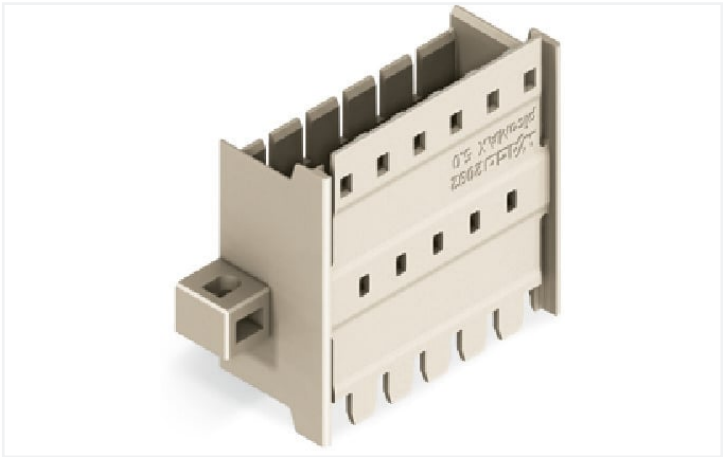


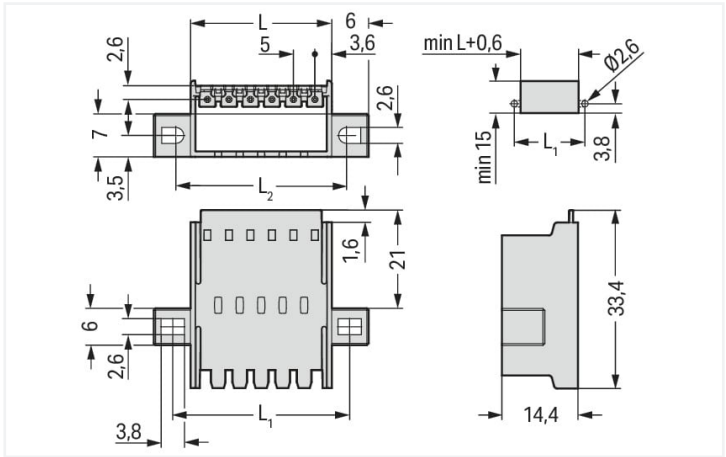
Data Sheet | Item Number: 2092-1636/024-000

Panel feedthrough male connector; clamping collar; 2.5 mm²; 6-pole; Pin spacing 5 mm; light gray

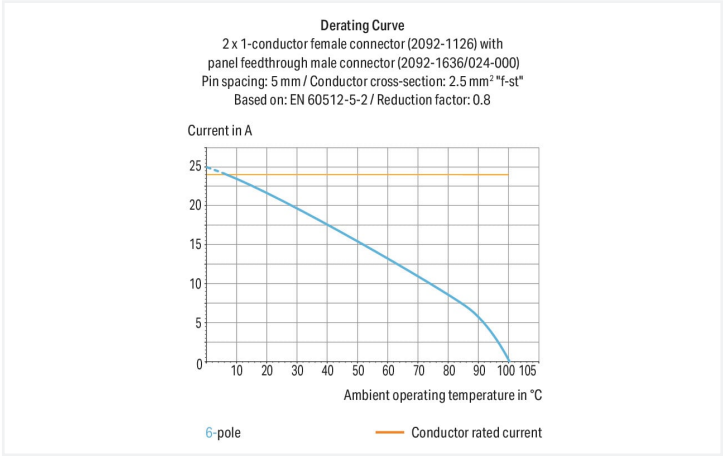
<https://www.wago.com/2092-1636/024-000>



Color: ■ light gray



Dimensions in mm
L = (pole no. x pin spacing) + 2.2 mm
L1 = (pole no. x pin spacing) + 8 mm
L2 = (pole no. x pin spacing) + 7 mm



- Male connectors for screw mounting in device or enclosure panels
- External plug-in connection via locking latches to female connectors with conductor terminations
- Internal plug-in connection to female headers with solder pins or female connectors with conductor terminations
- Also available with pre-assembled female connectors on both sides
- Fixing flanges also suitable for panel mounting

Notes				
Safety information		The picoMAX® Pluggable Connection System includes connectors without breaking capacity in accordance with DIN EN 61984. When used as intended, these connectors must not be connected/disconnected when live or under load. The circuit design should ensure header pins, which can be touched, are not live when unmated.		

Electrical data									
Ratings per		IEC/EN 60664-1			Approvals per			UL 1059	
Overvoltage category		III	III	II	Use group	B	C	D	
Pollution degree		3	2	2	Rated voltage	300 V	-	300 V	
Nominal voltage		250 V	320 V	630 V	Rated current	15 A	-	10 A	
Rated surge voltage		4 kV	4 kV	4 kV					
Rated current		16 A	16 A	16 A					

Connection data

Total number of potentials	6
Number of connection types	1
Number of levels	1

Connection 1

Pole number	6
-------------	---

Physical data

Pin spacing	5 mm / 0.197 inches
Width	32.2 mm / 1.268 inches
Height	14.4 mm / 0.567 inches
Depth	33.4 mm / 1.315 inches

Mechanical data

Variable coding	No
Mounting type	Mounting flange Feed-through mounting Panel mounting
Anti-rotation protection	Yes

Plug-in connection

Contact type (pluggable connector)	Male connector/plug
Connector (connection type)	for pluggable connector
Mismating protection	No
Plugging without loss of pin spacing	Yes
Locking of plug-in connection	Locking latch

Material data

Note (material data)	Information on material specifications can be found here
Color	light gray
Material group	I
Insulation material	Polyphthalamide (PPA GF)
Flammability class per UL94	V0
Clamping spring material	Chrome-nickel spring steel (CrNi)
Contact material	Electrolytic copper (E _{Cu})
Contact plating	Tin
Fire load	0.116 MJ
Weight	5.5 g

Environmental requirements

Limit temperature range	-60 ... +100 °C
Processing temperature	-35 ... +60 °C



Commercial data		
Product Group	26 (picoMAX Connectors)	
eCl@ss 10.0	27-14-11-06	
eCl@ss 9.0	27-14-11-06	
ETIM 8.0	EC001284	
ETIM 7.0	EC001284	
PU (SPU)	50 pcs	
Packaging type	Box	
Country of origin	DE	
GTIN	4050821165743	
Customs tariff number	85366930000	

Environmental Product Compliance		
RoHS Compliance Status	Compliant,No Exemption	

Approvals / Certificates

General approvals



Approval	Standard	Certificate Name
CB DEKRA Certification B.V.	IEC 61984	NL-49737/A1
CSA DEKRA Certification B.V.	C22.2	2362521
CSA DEKRA Certification B.V.	C22.2 No. 158	2362521
cURus Underwriters Laboratories Inc.	UL 1059	E45172
KEMA/KEUR DEKRA Certification B.V.	EN 61984	71-102261 REV.2
UL Underwriters Laboratories Inc.	UL 1977	E45171



Downloads

Environmental Product Compliance		
Compliance Search		
Environmental Product Compliance 2092-1636/024-000		

Documentation

Additional Information			
Technical Section	03.04.2019	pdf 2010.85 KB	

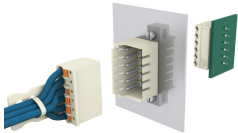
CAD/CAE-Data

CAD data	CAE data
2D/3D Models 2092-1636/024-000 	ZUKEN Portal 2092-1636/024-000 

Installation Notes



"Wire-to-wire" panel feedthrough connection
Notice: Male connectors must not be live when disconnected!



"Wire-to-board" panel feedthrough connection