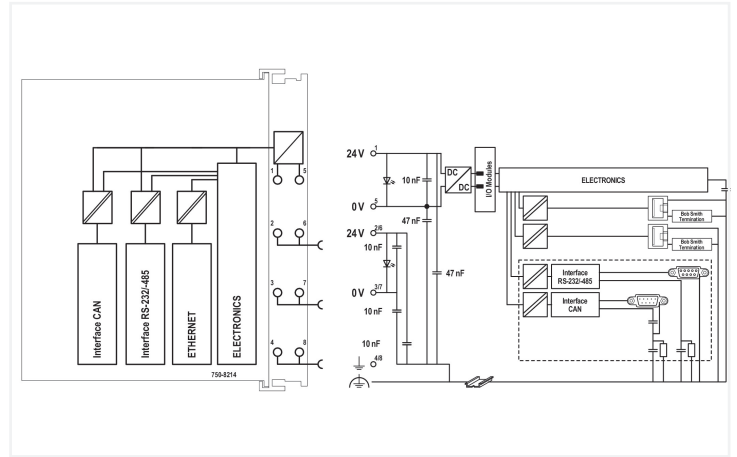


# Data Sheet | Item Number: 750-8214

Controller PFC200; 2nd Generation; 2 x ETHERNET, RS-232/-485, CAN, CANopen

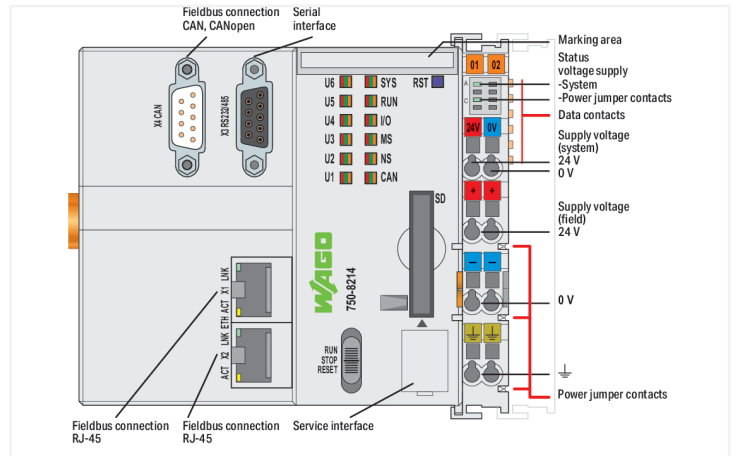
<https://www.wago.com/750-8214>



Color: ■ light gray

PFC200 Communication Options Overview

| Option    | Fieldbus connection | Serial interface | Service interface | Power supply | Power jumper contacts | Data contacts | Supply voltage (system) | Supply voltage (field) | Power jumper contacts |
|-----------|---------------------|------------------|-------------------|--------------|-----------------------|---------------|-------------------------|------------------------|-----------------------|
| Standard  | ✓                   | ✓                | ✓                 | ✓            | ✓                     | ✓             | ✓                       | ✓                      | ✓                     |
| Option 1  | ✓                   | ✓                | ✓                 | ✓            | ✓                     | ✓             | ✓                       | ✓                      | ✓                     |
| Option 2  | ✓                   | ✓                | ✓                 | ✓            | ✓                     | ✓             | ✓                       | ✓                      | ✓                     |
| Option 3  | ✓                   | ✓                | ✓                 | ✓            | ✓                     | ✓             | ✓                       | ✓                      | ✓                     |
| Option 4  | ✓                   | ✓                | ✓                 | ✓            | ✓                     | ✓             | ✓                       | ✓                      | ✓                     |
| Option 5  | ✓                   | ✓                | ✓                 | ✓            | ✓                     | ✓             | ✓                       | ✓                      | ✓                     |
| Option 6  | ✓                   | ✓                | ✓                 | ✓            | ✓                     | ✓             | ✓                       | ✓                      | ✓                     |
| Option 7  | ✓                   | ✓                | ✓                 | ✓            | ✓                     | ✓             | ✓                       | ✓                      | ✓                     |
| Option 8  | ✓                   | ✓                | ✓                 | ✓            | ✓                     | ✓             | ✓                       | ✓                      | ✓                     |
| Option 9  | ✓                   | ✓                | ✓                 | ✓            | ✓                     | ✓             | ✓                       | ✓                      | ✓                     |
| Option 10 | ✓                   | ✓                | ✓                 | ✓            | ✓                     | ✓             | ✓                       | ✓                      | ✓                     |
| Option 11 | ✓                   | ✓                | ✓                 | ✓            | ✓                     | ✓             | ✓                       | ✓                      | ✓                     |
| Option 12 | ✓                   | ✓                | ✓                 | ✓            | ✓                     | ✓             | ✓                       | ✓                      | ✓                     |
| Option 13 | ✓                   | ✓                | ✓                 | ✓            | ✓                     | ✓             | ✓                       | ✓                      | ✓                     |
| Option 14 | ✓                   | ✓                | ✓                 | ✓            | ✓                     | ✓             | ✓                       | ✓                      | ✓                     |
| Option 15 | ✓                   | ✓                | ✓                 | ✓            | ✓                     | ✓             | ✓                       | ✓                      | ✓                     |
| Option 16 | ✓                   | ✓                | ✓                 | ✓            | ✓                     | ✓             | ✓                       | ✓                      | ✓                     |
| Option 17 | ✓                   | ✓                | ✓                 | ✓            | ✓                     | ✓             | ✓                       | ✓                      | ✓                     |
| Option 18 | ✓                   | ✓                | ✓                 | ✓            | ✓                     | ✓             | ✓                       | ✓                      | ✓                     |
| Option 19 | ✓                   | ✓                | ✓                 | ✓            | ✓                     | ✓             | ✓                       | ✓                      | ✓                     |
| Option 20 | ✓                   | ✓                | ✓                 | ✓            | ✓                     | ✓             | ✓                       | ✓                      | ✓                     |
| Option 21 | ✓                   | ✓                | ✓                 | ✓            | ✓                     | ✓             | ✓                       | ✓                      | ✓                     |
| Option 22 | ✓                   | ✓                | ✓                 | ✓            | ✓                     | ✓             | ✓                       | ✓                      | ✓                     |
| Option 23 | ✓                   | ✓                | ✓                 | ✓            | ✓                     | ✓             | ✓                       | ✓                      | ✓                     |
| Option 24 | ✓                   | ✓                | ✓                 | ✓            | ✓                     | ✓             | ✓                       | ✓                      | ✓                     |
| Option 25 | ✓                   | ✓                | ✓                 | ✓            | ✓                     | ✓             | ✓                       | ✓                      | ✓                     |
| Option 26 | ✓                   | ✓                | ✓                 | ✓            | ✓                     | ✓             | ✓                       | ✓                      | ✓                     |
| Option 27 | ✓                   | ✓                | ✓                 | ✓            | ✓                     | ✓             | ✓                       | ✓                      | ✓                     |
| Option 28 | ✓                   | ✓                | ✓                 | ✓            | ✓                     | ✓             | ✓                       | ✓                      | ✓                     |
| Option 29 | ✓                   | ✓                | ✓                 | ✓            | ✓                     | ✓             | ✓                       | ✓                      | ✓                     |
| Option 30 | ✓                   | ✓                | ✓                 | ✓            | ✓                     | ✓             | ✓                       | ✓                      | ✓                     |
| Option 31 | ✓                   | ✓                | ✓                 | ✓            | ✓                     | ✓             | ✓                       | ✓                      | ✓                     |
| Option 32 | ✓                   | ✓                | ✓                 | ✓            | ✓                     | ✓             | ✓                       | ✓                      | ✓                     |
| Option 33 | ✓                   | ✓                | ✓                 | ✓            | ✓                     | ✓             | ✓                       | ✓                      | ✓                     |
| Option 34 | ✓                   | ✓                | ✓                 | ✓            | ✓                     | ✓             | ✓                       | ✓                      | ✓                     |
| Option 35 | ✓                   | ✓                | ✓                 | ✓            | ✓                     | ✓             | ✓                       | ✓                      | ✓                     |
| Option 36 | ✓                   | ✓                | ✓                 | ✓            | ✓                     | ✓             | ✓                       | ✓                      | ✓                     |
| Option 37 | ✓                   | ✓                | ✓                 | ✓            | ✓                     | ✓             | ✓                       | ✓                      | ✓                     |
| Option 38 | ✓                   | ✓                | ✓                 | ✓            | ✓                     | ✓             | ✓                       | ✓                      | ✓                     |
| Option 39 | ✓                   | ✓                | ✓                 | ✓            | ✓                     | ✓             | ✓                       | ✓                      | ✓                     |
| Option 40 | ✓                   | ✓                | ✓                 | ✓            | ✓                     | ✓             | ✓                       | ✓                      | ✓                     |
| Option 41 | ✓                   | ✓                | ✓                 | ✓            | ✓                     | ✓             | ✓                       | ✓                      | ✓                     |
| Option 42 | ✓                   | ✓                | ✓                 | ✓            | ✓                     | ✓             | ✓                       | ✓                      | ✓                     |
| Option 43 | ✓                   | ✓                | ✓                 | ✓            | ✓                     | ✓             | ✓                       | ✓                      | ✓                     |
| Option 44 | ✓                   | ✓                | ✓                 | ✓            | ✓                     | ✓             | ✓                       | ✓                      | ✓                     |
| Option 45 | ✓                   | ✓                | ✓                 | ✓            | ✓                     | ✓             | ✓                       | ✓                      | ✓                     |
| Option 46 | ✓                   | ✓                | ✓                 | ✓            | ✓                     | ✓             | ✓                       | ✓                      | ✓                     |
| Option 47 | ✓                   | ✓                | ✓                 | ✓            | ✓                     | ✓             | ✓                       | ✓                      | ✓                     |
| Option 48 | ✓                   | ✓                | ✓                 | ✓            | ✓                     | ✓             | ✓                       | ✓                      | ✓                     |
| Option 49 | ✓                   | ✓                | ✓                 | ✓            | ✓                     | ✓             | ✓                       | ✓                      | ✓                     |
| Option 50 | ✓                   | ✓                | ✓                 | ✓            | ✓                     | ✓             | ✓                       | ✓                      | ✓                     |



The PFC200 Controller is a compact PLC for the modular WAGO I/O System. Besides network and fieldbus interfaces, the controller supports all digital, analog and specialty modules found within the 750/753 Series.

Two ETHERNET interfaces and an integrated switch enable line topology wiring.

An integrated Webserver provides user configuration options, while displaying PFC200 status information.

Besides the processing industry and building automation, typical applications for the PFC200 include standard machinery and equipment control (e.g., packaging, bottling and manufacturing systems, as well as textile, metal and wood processing machines).

Programming per IEC 61131-3

- Programmable with CODESYS V3.5 from Firmware Release 23, WAGO-I/O-PRO V2.3 or *e!COCKPIT* up to Firmware Release 22
- Direct connection of WAGO's I/O modules
- 2 x ETHERNET (configurable), RS-232/-485, CAN, CANopen
- Linux operating system with PREEMPT\_RT patch
- Configuration via CODESYS or Web-Based Management user interface
- Maintenance-free

| Technical data                                   |                                                                                                                                                                                                                                                                                                                                                                                                          |
|--------------------------------------------------|----------------------------------------------------------------------------------------------------------------------------------------------------------------------------------------------------------------------------------------------------------------------------------------------------------------------------------------------------------------------------------------------------------|
| Communications                                   | CANopen<br>Modbus TCP master/slave<br>Modbus (UDP), WagoAppPlcModbus Library<br>Modbus (RTU), WagoAppPlcModbus Library<br>ETHERNET<br>EtherNet/IP™ Adapter (slave)<br>EtherNet/IP™ Scanner<br>EtherCAT® Master<br>OPC UA Server/Client<br>OPC UA Pub/Sub (can be installed later)<br>MQTT<br>RS-232 serial interface<br>RS-485 interface<br>Telecontrol protocols, <b>requires an additional license</b> |
| ETHERNET protocols                               | DHCP<br>DNS<br>NTP<br>FTP<br>FTPS<br>SNMP<br>HTTP<br>HTTPS<br>SSH                                                                                                                                                                                                                                                                                                                                        |
| Telecontrol protocols                            | IEC 60870 (additional license as slave or master)<br>IEC 61850 (additional license as Client or Server)<br>DNP3 (additional license as Slave or Master)                                                                                                                                                                                                                                                  |
| Visualization                                    | Web-Visu                                                                                                                                                                                                                                                                                                                                                                                                 |
| Operating system                                 | Real-time Linux (with PREEMPT_RT patch)                                                                                                                                                                                                                                                                                                                                                                  |
| CPU                                              | Cortex A8; 1 GHz                                                                                                                                                                                                                                                                                                                                                                                         |
| Programming languages per IEC 61131-3            | Instruction List (IL)<br>Ladder Diagram (LD)<br>Function Block Diagram (FBD)<br>Continuous Function Chart (CFC)<br>Structured Text (ST)<br>Sequential Function Chart (SFC)                                                                                                                                                                                                                               |
| Programming environment                          | CODESYS V3.5, Firmware Release 23 or higher<br><b>e!COCKPIT</b> (based on CODESYS V3) up to Firmware Release 22<br>WAGO-I/O-PRO V2.3 (based on CODESYS V2.3), up to Firmware Release 22                                                                                                                                                                                                                  |
| Configuration options                            | CODESYS V3<br><b>e!COCKPIT</b><br>WAGO-I/O-CHECK<br>Web-Based Management<br><b>e!RUNTIME</b> library<br>CODESYS Library                                                                                                                                                                                                                                                                                  |
| Transmission rate                                | ETHERNET: 10/100 Mbit/s                                                                                                                                                                                                                                                                                                                                                                                  |
| Transmission medium (communication/fieldbus)     | ETHERNET: Twisted pair S-UTP; 100 Ω; Cat. 5; 100 m maximum cable length                                                                                                                                                                                                                                                                                                                                  |
| Main memory (RAM)                                | 512 MB                                                                                                                                                                                                                                                                                                                                                                                                   |
| Internal memory (flash)                          | 4096 MB                                                                                                                                                                                                                                                                                                                                                                                                  |
| Non-volatile hardware memory                     | 128 KB                                                                                                                                                                                                                                                                                                                                                                                                   |
| Program memory                                   | CODESYS V2: 16 MB; CODESYS V3: 32 MB                                                                                                                                                                                                                                                                                                                                                                     |
| Data memory                                      | CODESYS V2: 64 MB; CODESYS V3: 128 MB                                                                                                                                                                                                                                                                                                                                                                    |
| Non-volatile software memory                     | 128 KB                                                                                                                                                                                                                                                                                                                                                                                                   |
| Non-volatile software memory                     | 128 KB                                                                                                                                                                                                                                                                                                                                                                                                   |
| Type of memory card                              | SD and SDHC up to 32 GB (all guaranteed properties only valid with WAGO's memory card)                                                                                                                                                                                                                                                                                                                   |
| Memory Card Slot                                 | Push-push mechanism; cover lid (sealable)                                                                                                                                                                                                                                                                                                                                                                |
| Number of modules per node (max.)                | 250                                                                                                                                                                                                                                                                                                                                                                                                      |
| Number of modules without a bus extension (max.) | 64                                                                                                                                                                                                                                                                                                                                                                                                       |
| Input and output process image (internal) max.   | 1000 words/1000 words                                                                                                                                                                                                                                                                                                                                                                                    |
| Input and output process image (Modbus®) max.    | CODESYS V2: 1000 words/1000 words; CODESYS V3: 32000 words/32000 words                                                                                                                                                                                                                                                                                                                                   |
| Input and output process image (CAN) max.        | 2000 words/2000 words                                                                                                                                                                                                                                                                                                                                                                                    |
| Drift – system clock (25 °C)                     | 20 ppm                                                                                                                                                                                                                                                                                                                                                                                                   |
| Drift – Real Time Clock (25 °C)                  | 3 ppm                                                                                                                                                                                                                                                                                                                                                                                                    |
| RTC backup time (25 °C)                          | 30 days                                                                                                                                                                                                                                                                                                                                                                                                  |
| Indicators                                       | LED (SYS, RUN, I/O, CAN, U1 ... U6) red/green/orange: Status system, program, internal data bus, CANopen, status programmable by user (can be used via CODESYS library);<br>LED (A, B) green: Status system power supply, field supply                                                                                                                                                                   |
| Supply voltage (system)                          | 24 VDC (-25 ... +30 %); via pluggable connector (CAGE CLAMP® connection)                                                                                                                                                                                                                                                                                                                                 |
| Input current (typ.) at nominal load (24 V)      | 550 mA                                                                                                                                                                                                                                                                                                                                                                                                   |

### Technical data

|                                                   |                                                   |
|---------------------------------------------------|---------------------------------------------------|
| Total current (system supply)                     | 1700 mA                                           |
| Supply voltage (field)                            | 24 VDC (-25 ... +30 %); via power jumper contacts |
| Current carrying capacity (power jumper contacts) | 10 A                                              |
| Number of outgoing power jumper contacts          | 3                                                 |
| Isolation                                         | 500 V system/field                                |

### Connection Data

|                                               |                                                                                                                                                                            |
|-----------------------------------------------|----------------------------------------------------------------------------------------------------------------------------------------------------------------------------|
| Connection technology: communication/fieldbus | CANopen: 1 x D-sub 9 plug; Modbus (TCP, UDP): 2 x RJ-45; Modbus RTU: 1 x D-sub 9 socket; RS-232 serial interface: 1 x D-sub 9 socket; RS-485 interface: 1 x D-sub 9 socket |
| Connection technology: system supply          | 2 x CAGE CLAMP®                                                                                                                                                            |
| Connection technology: field supply           | 6 x CAGE CLAMP®                                                                                                                                                            |
| Connectable conductor materials               | Copper                                                                                                                                                                     |
| Connection type                               | System/field supply                                                                                                                                                        |
| Solid conductor                               | 0.08 ... 2.5 mm <sup>2</sup> / 28 ... 14 AWG                                                                                                                               |
| Fine-stranded conductor                       | 0.08 ... 2.5 mm <sup>2</sup> / 28 ... 14 AWG                                                                                                                               |
| Strip length                                  | 8 ... 9 mm / 0.31 ... 0.35 inches                                                                                                                                          |
| Connection technology: device configuration   | 1 x Male connector; 4-pole                                                                                                                                                 |

### Physical data

|                                   |                        |
|-----------------------------------|------------------------|
| Width                             | 112 mm / 4.409 inches  |
| Height                            | 100 mm / 3.937 inches  |
| Depth                             | 71.9 mm / 2.831 inches |
| Depth from upper-edge of DIN-rail | 64.7 mm / 2.547 inches |

### Mechanical data

|               |             |
|---------------|-------------|
| Mounting type | DIN-35 rail |
|---------------|-------------|

### Material data

|                    |                              |
|--------------------|------------------------------|
| Color              | light gray                   |
| Housing material   | Polycarbonate; polyamide 6.6 |
| Fire load          | 2.45 MJ                      |
| Weight             | 256.9 g                      |
| Conformity marking | CE                           |

### Environmental requirements

|                                                                                    |                                                                                                                     |
|------------------------------------------------------------------------------------|---------------------------------------------------------------------------------------------------------------------|
| Ambient temperature (operation)                                                    | 0 ... +55 °C                                                                                                        |
| Ambient temperature (storage)                                                      | -25 ... +85 °C                                                                                                      |
| Protection type                                                                    | IP20                                                                                                                |
| Pollution degree                                                                   | 2 per IEC 61131-2                                                                                                   |
| Operating altitude                                                                 | without temperature derating: 0 ... 2000 m; with temperature derating: 2000 ... 5000 m (0.5 K/100 m); 5000 m (max.) |
| Mounting position                                                                  | Horizontal left, horizontal right, horizontal top, horizontal bottom, vertical top and vertical bottom              |
| Relative humidity (without condensation)                                           | 95 %                                                                                                                |
| Vibration resistance                                                               | 4g per IEC 60068-2-6                                                                                                |
| Shock resistance                                                                   | 15g per IEC 60068-2-27                                                                                              |
| EMC immunity to interference                                                       | per EN 61000-6-2, marine applications                                                                               |
| EMC emission of interference                                                       | per EN 61000-6-3, marine applications                                                                               |
| Exposure to pollutants                                                             | per IEC 60068-2-42 and IEC 60068-2-43                                                                               |
| Permissible H <sub>2</sub> S contaminant concentration at a relative humidity 75 % | 10 ppm                                                                                                              |
| Permissible SO <sub>2</sub> contaminant concentration at a relative humidity 75 %  | 25 ppm                                                                                                              |

### Commercial data

|                       |               |
|-----------------------|---------------|
| PU (SPU)              | 1 pcs         |
| Packaging type        | Box           |
| Country of origin     | DE            |
| GTIN                  | 4055143759762 |
| Customs tariff number | 85371091990   |

### Product Classification

|             |                      |
|-------------|----------------------|
| UNSPSC      | 32151705             |
| eCl@ss 10.0 | 27-24-26-07          |
| eCl@ss 9.0  | 27-24-26-07          |
| ETIM 9.0    | EC000236             |
| ETIM 10.0   | EC000236             |
| ECCN        | NO US CLASSIFICATION |

### Environmental Product Compliance

|                                           |                                                                                                                                                                          |
|-------------------------------------------|--------------------------------------------------------------------------------------------------------------------------------------------------------------------------|
| CAS-No.                                   | 1303-86-2<br>1317-36-8<br>693-98-1<br>7439-92-1<br>79-94-7                                                                                                               |
| REACH Candidate List Substance            | 2,2',6,6'-tetrabromo-4,4'-isopropylidenediphenol<br>2-methylimidazole<br>Diboron trioxide<br>Lead<br>Lead monoxide<br>Perfluorobutane sulfonic acid (PFBS) and its salts |
| RoHS Compliance Status                    | Compliant,With Exemption                                                                                                                                                 |
| RoHS Exemption                            | 6(c)<br>7(a)<br>7(c)-I<br>7(c)-II                                                                                                                                        |
| SCIP notification number (Austria)        | d9aadd2f-b15f-4e94-8da8-2ed7a3021578                                                                                                                                     |
| SCIP notification number (Belgium)        | 859989bc-2637-419c-8e32-a01ccb47ee12                                                                                                                                     |
| SCIP notification number (Bulgaria)       | 33204001-767b-4079-a168-8802c4fa0269                                                                                                                                     |
| SCIP notification number (Czech Republic) | 3c9292d6-2615-4261-8465-f143b7638688                                                                                                                                     |
| SCIP notification number (Denmark)        | 8317f84e-c65f-4805-8b79-c08a39de4f76                                                                                                                                     |
| SCIP notification number (Finland)        | d4b2388e-b609-4fcb-bfac-145688f8e1f1                                                                                                                                     |
| SCIP notification number (France)         | b8cf4f71-58fc-43c3-a366-bb3feafb3787                                                                                                                                     |
| SCIP notification number (Germany)        | e83469b5-3ba2-4366-b66d-6f902f06abb1                                                                                                                                     |
| SCIP notification number (Hungary)        | 9fdebca9-ae2d-4ae6-af11-47ab714b3ca2                                                                                                                                     |
| SCIP notification number (Italy)          | 76fca1bc-308c-4ede-b4ba-180817226836                                                                                                                                     |
| SCIP notification number (Netherlands)    | 51dc0dd6-cb66-422f-85d6-89363a14eb03                                                                                                                                     |
| SCIP notification number (Poland)         | ca54f228-b993-4f07-a253-40c757faaed2                                                                                                                                     |
| SCIP notification number (Romania)        | e68fc98c-6936-44c6-a49a-30e7b1370e6b                                                                                                                                     |
| SCIP notification number (Sweden)         | dec7e2a4-4ab9-43d1-abb5-789a7157fdd8                                                                                                                                     |

Approvals / Certificates

General approvals



| Approval                                                  | Standard               | Certificate Name    |
|-----------------------------------------------------------|------------------------|---------------------|
| EAC<br>GZO Almaty Standart                                | TP TC 020/2011         | EAC CoC 03083       |
| KC<br>National Radio Research Agency                      | Article 58-2, Clause 3 | MSIP-REM-W43-PFC750 |
| UL<br>Underwriters Laboratories Inc. (ORDINARY LOCATIONS) | -                      | E175199             |

Declarations of conformity and manufacturer's declarations

| Approval                                           | Standard | Certificate Name |
|----------------------------------------------------|----------|------------------|
| EU-Declaration of Conformity<br>WAGO GmbH & Co. KG | -        | -                |
| UK-Declaration of Conformity<br>WAGO GmbH & Co. KG | -        | -                |

Approvals for marine applications



| Approval                                              | Standard                        | Certificate Name  |
|-------------------------------------------------------|---------------------------------|-------------------|
| ABS<br>American Bureau of Shipping                    | -                               | 22-2219060        |
| BSH<br>Bundesamt fuer Seeschifffahrt und Hydrographie | -                               | 1104              |
| BV<br>Bureau Veritas S.A.                             | Rules for class. of Steel Ships | 66711/A0          |
| DNV<br>DNV GL SE                                      | DNV-CG-0339, Aug.2021           | TAA0000194        |
| KR<br>Korean Register of Shipping                     | -                               | KR HMB05880-AC001 |
| LR<br>Lloyds Register EMEA                            | -                               | LR22180952TA      |
| PRS<br>Polski Rejestr Statków                         | -                               | TE/1101/880590/23 |
| RINA<br>RINA Germany GmbH                             | -                               | ELE343521XG001    |

Approvals for hazardous areas



| Approval                                                   | Standard    | Certificate Name                           |
|------------------------------------------------------------|-------------|--------------------------------------------|
| ATEX<br>TUEV Nord Cert GmbH                                | EN 60079-0  | TUEV14ATEX148929X (II 3 G Ex ec IIC T4 Gc) |
| CCCEX<br>CQST/CNEx                                         | CNCA-C23-01 | 2020312310000213 (Ex ec IIC T4 Gc)         |
| IECEX<br>TUEV Nord Cert GmbH                               | IEC 60079-0 | IECEX TUN 14.0035 X (Ex ec IIC T4 Gc)      |
| INMETRO<br>TUV Rheinland do Brasil Ltda.                   | IEC 60079-0 | TUV 12.1297 X                              |
| UKEx<br>WAGO GmbH & Co. KG                                 | EN 60079-0  | UKCA_WA GO22UKEX003X_ec                    |
| UL<br>Underwriters Laboratories Inc. (HAZARDOUS LOCATIONS) | UL 121201   | E198726                                    |

Downloads

Environmental Product Compliance

Compliance Search

Environmental Product Compliance 750-8214



**Documentation**

| Manual                                                                      |                                                      |                   |                   |
|-----------------------------------------------------------------------------|------------------------------------------------------|-------------------|-------------------|
| Function Manual for PFC100 2nd Generation, PFC200 2nd Generation and PFC300 | 3621366155   5   en-US   2026-02-03 07:08 06.02.2026 | pdf<br>2460.24 KB | <a href="#">↓</a> |
| Cyber Security for Controller PFC100 / PFC200                               | V 1.2.1<br>12.02.2025                                | pdf<br>3344.50 KB | <a href="#">↓</a> |
| Product Manual PFC200 G2 2ETH RS CAN                                        | 2341178763   3   en-US   8/6/2024 10:00 07.08.2024   | pdf<br>2904.53 KB | <a href="#">↓</a> |
| System Manual Series 750/753                                                |                                                      |                   | <a href="#">↓</a> |
| Product Manual OPC UA Mapping Editor                                        | V 1.1.0<br>11.03.2022                                | pdf<br>3314.23 KB | <a href="#">↓</a> |
| OPC_UA Mapping Editor                                                       |                                                      |                   | <a href="#">↓</a> |
| Product Manual WAGO MODBUS Master Configurator                              | V 1.1.0                                              | pdf<br>1761.59 KB | <a href="#">↓</a> |
| Migration Guide                                                             | 2023631499   9   en-US   2026-01-15 14:41 20.01.2026 | pdf<br>2705.60 KB | <a href="#">↓</a> |
| Migrationsleitfaden von e!COCKPIT-Projekten zu CODESYS V3.5                 |                                                      |                   | <a href="#">↓</a> |

| System Description                                 |  |                  |                   |
|----------------------------------------------------|--|------------------|-------------------|
| Overview on WAGO-I/O-SYSTEM 750 approvals          |  | pdf<br>770.48 KB | <a href="#">↓</a> |
| Controller PFC100/200, General Product Information |  | pdf<br>578.66 KB | <a href="#">↓</a> |

| Tutorial                                       |                   |                    |                   |
|------------------------------------------------|-------------------|--------------------|-------------------|
| Establish connection to a controller using SSH | 1.0<br>05.08.2017 | mp4<br>28368.02 KB | <a href="#">↓</a> |
| Set IP address with Ethernet Settings          | 3.0<br>18.12.2017 | mp4<br>86272.82 KB | <a href="#">↓</a> |

| Additional Information |                       |                   |                   |
|------------------------|-----------------------|-------------------|-------------------|
| WAGO OPC UA Server     | V 1.1.0<br>28.01.2021 | pdf<br>1132.87 KB | <a href="#">↓</a> |

| Bid Text |            |                  |                   |
|----------|------------|------------------|-------------------|
| 750-8214 | 19.02.2019 | xml<br>9.63 KB   | <a href="#">↓</a> |
| 750-8214 | 23.01.2019 | docx<br>21.75 KB | <a href="#">↓</a> |

| Instruction Leaflet             |            |                  |                   |
|---------------------------------|------------|------------------|-------------------|
| CCC Ex (Additional information) | 26.04.2023 | pdf<br>159.76 KB | <a href="#">↓</a> |

**Application Notes**

| Application Note CoDeSys 2.3                                                   |                          |                   |                   |
|--------------------------------------------------------------------------------|--------------------------|-------------------|-------------------|
| Application note for installing a MySQL-Server on a PFC-Controller             | 1.0.4<br>16.05.2019      | zip<br>4392.22 KB | <a href="#">↓</a> |
| Application note Cloud Connectivity                                            | 2019-09-17<br>17.09.2019 | zip<br>3973.74 KB | <a href="#">↓</a> |
| HART Tool Routing via ETHERNET with 750-820x/750-88x and CODESYS 2.3 (a116120) | 1.0.0<br>22.03.2019      | pdf<br>3798.36 KB | <a href="#">↓</a> |
| HART Tool Routing via PROFIBUS with 750-833 and 750-333 (a116140)              | 1.0.0<br>22.03.2019      | pdf<br>5214.96 KB | <a href="#">↓</a> |

| Application Note CoDeSys 2.3                                                                       |                          |                    |                   |
|----------------------------------------------------------------------------------------------------|--------------------------|--------------------|-------------------|
| Using the web visualization with Java™ runtime environment (JRE, JVM) 7 update 51 (7u51) (a500690) | 1.2.4<br>26.02.2019      | zip<br>4896.43 KB  | <a href="#">↓</a> |
| Application Note PowerMeasurement_03 Library                                                       | 19.01.2011<br>19.03.2012 | zip<br>932.08 KB   | <a href="#">↓</a> |
| Application Note: DMX_02                                                                           | 26.04.2017<br>26.04.2017 | zip<br>733.43 KB   | <a href="#">↓</a> |
| HVAC System Macros                                                                                 | 10.03.2017<br>15.03.2019 | zip<br>13252.92 KB | <a href="#">↓</a> |
| Application Note: Mp-Bus_03 Library                                                                | 2020-08-14<br>14.08.2020 | zip<br>513.66 KB   | <a href="#">↓</a> |



| Application Note CoDeSys 2.3                                                           |                          |                    |                   |
|----------------------------------------------------------------------------------------|--------------------------|--------------------|-------------------|
| Connection of a Thermo-kon Thanos SR L MODBUS room control unit to the WAGO-I/O-SYSTEM | 02.05.2013<br>13.05.2013 | zip<br>305.89 KB   | <a href="#">↓</a> |
| Anbindung der HKW-Elektronik Wetterprognose-Station WS-K xx T ModBus                   | 1.1<br>07.07.2017        | zip<br>762.78 KB   | <a href="#">↓</a> |
| Application Note Scheduler_03.lib                                                      | 20.05.2011<br>20.05.2011 | zip<br>1717.92 KB  | <a href="#">↓</a> |
| GRUNDFOS GENibus interface, application note                                           | 20.03.2017<br>20.03.2017 | zip<br>279.86 KB   | <a href="#">↓</a> |
| Connection of Thermo-kon Multi-function room control units WRF 08                      | 10.04.2019<br>10.04.2019 | zip<br>855.84 KB   | <a href="#">↓</a> |
| Connection of DMX devices to the WAGO-I/O-SYSTEM via the ArtNet-DMX STAGE-PROFI 1.1    | 11.01.2013<br>11.01.2013 | zip<br>1450.63 KB  | <a href="#">↓</a> |
| Connection of Thermo-kon Multi-function room control units WRF 06                      | 10.04.2019<br>08.04.2016 | zip<br>826.10 KB   | <a href="#">↓</a> |
| Application Note for the 750-494 3-Phase Power Measurement Module                      | 24.01.2014<br>11.11.2014 | zip<br>1629.99 KB  | <a href="#">↓</a> |
| Application Note: EnOcean_06 Library                                                   | 30.11.2016<br>30.11.2016 | zip<br>822.25 KB   | <a href="#">↓</a> |
| Application Note for the 750-495 3-Phase Power Measurement Module                      | 24.01.2014<br>24.01.2014 | zip<br>1806.18 KB  | <a href="#">↓</a> |
| Application Note Library WagoDatalogger_02                                             | 2020-05-20<br>20.05.2020 | zip<br>1256.74 KB  | <a href="#">↓</a> |
| Application Note Weather Station Elsner P03 Modbus                                     | 01.12.2011<br>28.10.2011 | zip<br>269.09 KB   | <a href="#">↓</a> |
| Application note: DALI 753-647 Configuration Interface                                 | 1.0.2<br>29.04.2019      | zip<br>3032.71 KB  | <a href="#">↓</a> |
| HLK-Anlagenmakros für TRIC                                                             | 2015-07-10<br>10.07.2015 | zip<br>74963.43 KB | <a href="#">↓</a> |
| Application Note Library ModuleAccess_01                                               | 05.01.2016<br>29.01.2016 | zip<br>1001.22 KB  | <a href="#">↓</a> |
| Anwendungshinweis für die Steuerung eines Iigus robotlink                              | 12.11.2015<br>12.11.2015 | zip<br>1281.38 KB  | <a href="#">↓</a> |

| Application Note e!COCKPIT                                           |                          |                   |                   |
|----------------------------------------------------------------------|--------------------------|-------------------|-------------------|
| eCOCKPIT application note installation MySQL-Server                  | 1.0.3<br>09.09.2019      | pdf<br>1868.46 KB | <a href="#">↓</a> |
| CODESYS 3 Application Note WagoAppCloud                              | 2022-11-04<br>04.11.2022 | zip<br>2678.52 KB | <a href="#">↓</a> |
| HART Tool Routing via ETHERNET with 750-820x and e!RUNTIME (a116130) | 1.0.0<br>22.03.2019      | pdf<br>2867.01 KB | <a href="#">↓</a> |
| SNMP Communication (a500850)                                         | 1.1.0<br>20.02.2020      | zip<br>3743.05 KB | <a href="#">↓</a> |

| CAD/CAE-Data                            |                                              |
|-----------------------------------------|----------------------------------------------|
| <b>CAD data</b>                         | <b>CAE data</b>                              |
| 2D/3D Models 750-8214 <a href="#">↓</a> | EPLAN Data Portal 750-8214 <a href="#">↓</a> |
|                                         | ZUKEN Portal 750-8214 <a href="#">↓</a>      |

## Engineering-Software

### Configuration and Commissioning Software

|                                                             |                           |     |              |                   |
|-------------------------------------------------------------|---------------------------|-----|--------------|-------------------|
| CODESYS V3.5                                                |                           | png | 315.13 KB    | <a href="#">↓</a> |
| WAGO-IO-PRO Demo-Version (759-912) / Serie 750, 758 und 762 | V 2.3.9.68<br>17.02.2022  | zip | 122524.17 KB | <a href="#">↓</a> |
| (759-316) WAGO Ethernet Settings / Serie 750                | 06.18.01.01<br>02.09.2021 | zip | 26678.54 KB  | <a href="#">↓</a> |
| WAGUpload                                                   | 1.16.1.0<br>02.02.2022    | zip | 12111.45 KB  | <a href="#">↓</a> |

## Runtime Software

### Firmware

|                                                                  |                        |     |              |                   |
|------------------------------------------------------------------|------------------------|-----|--------------|-------------------|
| Image Update (SD Karte) PFC100/200 für Codesys V2.3 u. Elcockpit | V 22 SP1<br>12.12.2022 | zip | 205815.20 KB | <a href="#">↓</a> |
| PFC200, Firmware Update für CoDeSys V3.5                         | V 23<br>24.02.2023     | zip | 167985.38 KB | <a href="#">↓</a> |
| WUP Update (WAGUploadTool) PFC100/200 Codesys V2.3 u. Elcockpit  | V 22 SP1<br>12.12.2022 | zip | 203580.70 KB | <a href="#">↓</a> |

## Libraries

### Device Description File

|                                                         |                  |     |            |                   |
|---------------------------------------------------------|------------------|-----|------------|-------------------|
| 750-914; EDS file for CANopen / 750, 752 and 767 Series | XT<br>12.03.2021 | zip | 1728.38 KB | <a href="#">↓</a> |
|---------------------------------------------------------|------------------|-----|------------|-------------------|

### Library

|                              |                     |     |            |                   |
|------------------------------|---------------------|-----|------------|-------------------|
| WagoConfigToolLIB            | 1.0.0<br>08.10.2013 | pdf | 340.92 KB  | <a href="#">↓</a> |
| WagoLibLed                   | 1.0.0               | pdf | 504.39 KB  | <a href="#">↓</a> |
| WagoLibNetSnmpManager        | 1.1.0               | pdf | 1090.83 KB | <a href="#">↓</a> |
| WagoLibDiagnosticIDs         | 1.0.0               | pdf | 291.17 KB  | <a href="#">↓</a> |
| WagoLibCpuUsage              | 1.0.0               | pdf | 259.51 KB  | <a href="#">↓</a> |
| Library WagoLib-Cloud_02.lib | 2.2.4<br>21.01.2020 | zip | 56.21 KB   | <a href="#">↓</a> |
| WAGO_Datalogger_02.lib       | 2.7<br>20.05.2020   | zip | 662.90 KB  | <a href="#">↓</a> |

## 1 Compatible Products

### 1.1 Product Expansions

#### 1.1.1 Runtime software



**Item No.: 2759-2293/211-1000**  
Runtime; DNP3 Master; M; Single License; Online activation



**Item No.: 2759-2290/211-1000**  
Runtime; DNP3 Slave; Single License; Online activation



**Item No.: 2759-293/211-1000**  
Runtime; IEC60870 Master; M; Single License; Online activation



**Item No.: 2759-290/211-1000**  
Runtime; IEC60870 Slave; Single License; Online activation



**Item No.: 2759-2243/211-1000**  
Runtime; IEC61850 Client; M; Single License; Online activation



**Item No.: 2759-2240/211-1000**  
Runtime; IEC61850 Server; Single License; Online activation



**Item No.: 2759-248/211-1000**  
Runtime; Multi Cloud Connectivity; Single License; Online activation



**Item No.: 2759-247/211-1000**  
Runtime; Sparkplug; Single License; Online activation

## 1.2 Optional Accessories

### 1.2.1 Cables and connectors

#### 1.2.1.1 Connector plug



**Item No.: 750-979/000-011**  
Connector ETHERNET; RJ-45; Cat. 6A; angled; Code T568A; AWG 22; Strain relief



**Item No.: 750-979/000-021**  
Connector ETHERNET; RJ-45; Cat. 6A; angled; Code T568A; AWG 24; Strain relief



**Item No.: 750-979/000-012**  
Connector ETHERNET; RJ-45; Cat. 6A; angled; Code T568B; AWG 22; Strain relief



**Item No.: 750-979/000-022**  
Connector ETHERNET; RJ-45; Cat. 6A; angled; Code T568B; AWG 24; Strain relief



**Item No.: 750-977/000-011**  
Connector ETHERNET; RJ-45; Cat. 6A; straight; Code T568A; AWG 22



**Item No.: 750-978/000-011**  
Connector ETHERNET; RJ-45; Cat. 6A; straight; Code T568A; AWG 22; Strain relief



**Item No.: 750-977/000-021**  
Connector ETHERNET; RJ-45; Cat. 6A; straight; Code T568A; AWG 24



**Item No.: 750-978/000-021**  
Connector ETHERNET; RJ-45; Cat. 6A; straight; Code T568A; AWG 24; Strain relief



**Item No.: 750-977/000-012**  
Connector ETHERNET; RJ-45; Cat. 6A; straight; Code T568B; AWG 22



**Item No.: 750-978/000-012**  
Connector ETHERNET; RJ-45; Cat. 6A; straight; Code T568B; AWG 22; Strain relief



**Item No.: 750-977/000-022**  
Connector ETHERNET; RJ-45; Cat. 6A; straight; Code T568B; AWG 24



**Item No.: 750-978/000-022**  
Connector ETHERNET; RJ-45; Cat. 6A; straight; Code T568B; AWG 24; Strain relief



**Item No.: 750-975**  
ETHERNET RJ-45 connector, IP20; ETHERNET 10/100 Mbit/s; for field assembly



**Item No.: 750-963**  
Fieldbus Connector CANopen; with D-sub female connector; 9-pole

## 1.2.2 Communication

### 1.2.2.1 Communication cable



**Item No.: 750-923/000-001**  
Configuration cable; USB connector; Length: 5 m

1.2.3 DIN-rail

1.2.3.1 Mounting accessories



**Item No.: 210-196**

Aluminum carrier rail; 35 x 8.2 mm; 1.6 mm thick; 2 m long; unslotted; similar to EN 60715; silver-colored



**Item No.: 210-198**

Copper carrier rail; 35 x 15 mm; 2.3 mm thick; 2 m long; unslotted; according to EN 60715; copper-colored



**Item No.: 210-197**

Steel carrier rail; 35 x 15 mm; 1.5 mm thick; 2 m long; slotted; similar to EN 60715; silver-colored



**Item No.: 210-114**

Steel carrier rail; 35 x 15 mm; 1.5 mm thick; 2 m long; unslotted; similar to EN 60715; silver-colored



**Item No.: 210-118**

Steel carrier rail; 35 x 15 mm; 2.3 mm thick; 2 m long; unslotted; according to EN 60715; silver-colored



**Item No.: 210-115**

Steel carrier rail; 35 x 7.5 mm; 1 mm thick; 2 m long; slotted; according to EN 60715; "Hole width 18 mm; silver-colored



**Item No.: 210-112**

Steel carrier rail; 35 x 7.5 mm; 1 mm thick; 2 m long; slotted; according to EN 60715; "Hole width 25 mm; silver-colored



**Item No.: 210-113**

Steel carrier rail; 35 x 7.5 mm; 1 mm thick; 2 m long; unslotted; according to EN 60715; silver-colored

1.2.4 Marking

1.2.4.1 Group marker carrier



**Item No.: 750-107**

Group marker carrier

1.2.4.2 Marker



**Item No.: 2009-145/000-006**

Mini-WSB In-line; for Smart Printer; 1700 pieces on roll; stretchable 5 - 5.2 mm; plain; snap-on type; blue



**Item No.: 2009-145/000-007**

Mini-WSB In-line; for Smart Printer; 1700 pieces on roll; stretchable 5 - 5.2 mm; plain; snap-on type; gray



**Item No.: 2009-145/000-023**

Mini-WSB In-line; for Smart Printer; 1700 pieces on roll; stretchable 5 - 5.2 mm; plain; snap-on type; green



**Item No.: 2009-145/000-012**

Mini-WSB In-line; for Smart Printer; 1700 pieces on roll; stretchable 5 - 5.2 mm; plain; snap-on type; orange



**Item No.: 2009-145/000-005**

Mini-WSB In-line; for Smart Printer; 1700 pieces on roll; stretchable 5 - 5.2 mm; plain; snap-on type; red



**Item No.: 2009-145/000-024**

Mini-WSB In-line; for Smart Printer; 1700 pieces on roll; stretchable 5 - 5.2 mm; plain; snap-on type; violet



**Item No.: 2009-145**

Mini-WSB In-line; for Smart Printer; 1700 pieces on roll; stretchable 5 - 5.2 mm; plain; snap-on type; white



**Item No.: 2009-145/000-002**

Mini-WSB In-line; for Smart Printer; 1700 pieces on roll; stretchable 5 - 5.2 mm; plain; snap-on type; yellow



**Item No.: 248-501/000-006**

Mini-WSB marking card; as card; not stretchable; plain; snap-on type; blue



**Item No.: 248-501/000-007**

Mini-WSB marking card; as card; not stretchable; plain; snap-on type; gray



**Item No.: 248-501/000-023**

Mini-WSB marking card; as card; not stretchable; plain; snap-on type; green



**Item No.: 248-501/000-017**

Mini-WSB marking card; as card; not stretchable; plain; snap-on type; light green



**Item No.: 248-501/000-012**

Mini-WSB marking card; as card; not stretchable; plain; snap-on type; orange



**Item No.: 248-501/000-005**

Mini-WSB marking card; as card; not stretchable; plain; snap-on type; red



**Item No.: 248-501/000-024**

Mini-WSB marking card; as card; not stretchable; plain; snap-on type; violet



**Item No.: 248-501**

Mini-WSB marking card; as card; not stretchable; plain; snap-on type; white



**Item No.: 248-501/000-002**

Mini-WSB marking card; as card; not stretchable; plain; snap-on type; yellow

### 1.2.4.3 Marker carrier



**Item No.: 750-103**  
Group marker carrier

### 1.2.5 Memory card

#### 1.2.5.1 Memory card



**Item No.: 758-879/000-2108**  
Memory Card SD; pSLC-NAND; 8 GB;  
Temperature range: -40 to 90°C



**Item No.: 758-879/000-001**  
Memory Card SD; SLC-NAND; 2 GByte;  
Temperature from -40 to 90 °C

### 1.2.6 Shield termination

#### 1.2.6.1 Shield clamping saddles



**Item No.: 790-108**  
Shield clamping saddle; 11 mm wide; dia-  
meter of compatible conductor; 3 ... 8 mm



**Item No.: 790-208**  
Shield clamping saddle; 12.4 mm wide;  
3 ... 8 mm



**Item No.: 790-116**  
Shield clamping saddle; 19 mm wide; dia-  
meter of compatible conductor; 7 ... 16  
mm



**Item No.: 790-216**  
Shield clamping saddle; 21.8 mm wide;  
6 ... 16 mm



**Item No.: 790-124**  
Shield clamping saddle; 27 mm wide; dia-  
meter of compatible conductor; 6 ... 24  
mm



**Item No.: 790-220**  
Shield clamping saddle; 30 mm wide; 6 ...  
20 mm



**Item No.: 790-140**  
Shield clamping saddle; diameter of com-  
patible conductor

### 1.2.7 Software

#### 1.2.7.1 Software Application



**Item No.: 2759-245/211-1000**  
Library Controller Redundancy Master;  
Single License; Online activation

### 1.2.8 System enclosure

#### 1.2.8.1 System enclosure



**Item No.: 850-825**  
IP65 enclosure; Aluminium (RAL 7032);  
WxHxD (160x100x160 mm); 9 x M12, 4 x  
M20



**Item No.: 850-826**  
IP65 enclosure; Aluminium (RAL 7032);  
WxHxD (240x100x160 mm); 4 x M20, 4 x  
M16, 14 x M12 cable grip



**Item No.: 850-827**  
IP65 enclosure; Aluminium (RAL 7032);  
WxHxD (320x100x160 mm); 4 x M20, 8 x  
M16, 17 x M12 cable grip



**Item No.: 850-828**  
IP65 enclosure; Aluminium (RAL 7032);  
WxHxD (480x100x160 mm); 4 x M20, 10 x  
M16, 35 x M12 cable grip



**Item No.: 850-826/002-000**  
IP65 enclosure; Aluminium (RAL 7035);  
WxHxD (240x100x160 mm); 4 x M20, 4 x  
M16, 14 x M12 cable grip



**Item No.: 850-827/002-000**  
IP65 enclosure; Aluminium (RAL 7035);  
WxHxD (320x100x160 mm); 4 x M20, 8 x  
M16, 17 x M12 cable grip



**Item No.: 850-828/002-000**  
IP65 enclosure; Aluminium (RAL 7035);  
WxHxD (480x100x160 mm); 4 x M20, 10 x  
M16, 35 x M12 cable grip



**Item No.: 850-834**  
IP65 enclosure; Polyester (RAL 7032); Wx-  
HxD (164x100x164 mm); 9 x M12, 4 x M20

1.2.8.1 System enclosure



**Item No.: 850-835**

IP65 enclosure; Polyester (RAL 7032); WxHxD (244x100x164 mm); 4 x M20, 4 x M16, 14 x M12 cable grip



**Item No.: 850-836**

IP65 enclosure; Polyester (RAL 7032); WxHxD (324x100x164 mm); 4 x M20, 8 x M16, 17 x M12 cable grip



**Item No.: 850-814/002-000**

IP65 enclosure; Sheet steel (RAL 7035); WxHxD (200x120x200 mm); without flange plate



**Item No.: 850-815/002-000**

IP65 enclosure; Sheet steel (RAL 7035); WxHxD (300x120x200 mm); without flange plate



**Item No.: 850-816/002-000**

IP65 enclosure; Sheet steel (RAL 7035); WxHxD (400x120x200 mm); without flange plate



**Item No.: 850-817/002-000**

IP65 enclosure; Sheet steel (RAL 7035); WxHxD (600x120x200 mm); without flange plate