

PRODUCT DATASHEET

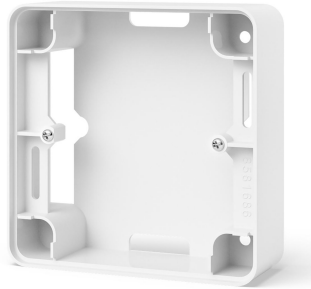
Type: ET-AR7X
Art. Nr.: 40490



9120015727783

Short description

Surface-mount housing in RAL9003 for eTOUCH PRO / eTOUCH ECO / eBASIC

**Product Description**

The ETHERMA ET-AR7X is a convenient solution for installing thermostats without the need for a flush-mount box. Our surface mount enclosure in RAL9003 is specifically designed for easy and hassle-free installation of thermostats such as the eTOUCH PRO, eTOUCH ECO and eBASIC. The surface mount enclosure features 4 cable-tube/gutter entries on the side and 2 on the back.

ETIM 10 Characteristics

Assembly arrangement	Surface mounted box	Number of modules (module system)	0
Suitable for mounting over existing flush-mounted box	✓	Number of units	1
Suitable for modular domestic switching devices	✗	RAL-number (similar)	9003
Mounting direction	Horizontal and vertical	Number of inlets	6
Shape	Square	Number of earthing terminals	0
Desktop device	✗	Width	87 Millimetre
Material	Plastic	Height	87 Millimetre
Material quality	Duroplast	Depth	29 Millimetre
Halogen free	✓	Diameter	0 Millimetre
Surface protection	Other		
Surface finishing	Glossy		
Colour	White		
Transparent	✗		
With cover frame	✗		
Cross-trunking mounting	✓		
With duct entry	✓		
With cable entry	✓		
With screw gland entry	✗		
With installation tube entry	✗		
Inlet from the rear	✓		
Shock resistant	✓		
Degree of protection (IP)	IP20		
Compliant with BS 4662	✗		

Created on: 16/12/2025