



169-308 5700K specific configuration  
Track spot | 3-phase | white | linear | 3-CCT | dim

Introduction

**Purpose of this Document**

This document provides information for 169-308 5700K . During measurement, the product is used in a different mode where output power, colour temperature and/or beam angle are changed from factory standard. These adjustments can be made without altering the product and are designed to be set by the installer. In most cases, the options are set through switches on the product.

**Results**

Total input power	15.2 W
Correlated Colour Temperature	6062 K
Total lumen output	1141 lm
Efficiency	75 lm/W

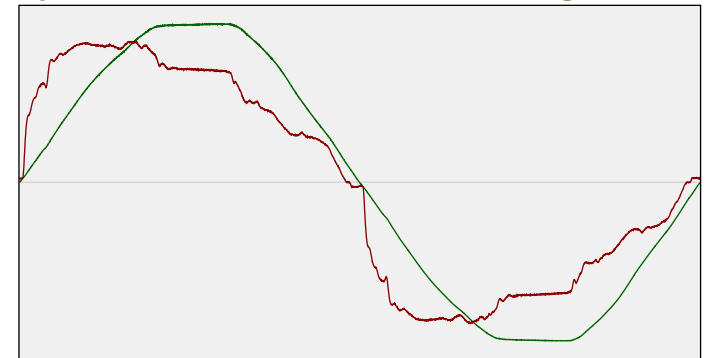
Electrical measurement details

**Input Power**

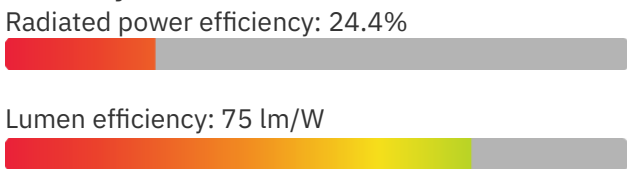
RMS Input voltage feed, $V_{RMS}$	232 V
RMS Input current feed, $I_{RMS}$	0.071 A
Total input power	15.2 W
Frequency of input power	50 Hz
Power factor	0.92
Displacement power factor	0.95
Total harmonic distortion of the current	21.64%
Total harmonic distortion of the voltage	2.72%

**Input Power Curve**

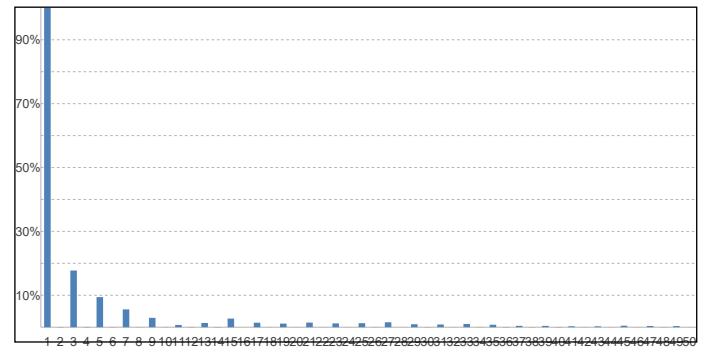
Voltage - Current



**Efficiency**



**Current Harmonics %**



**Harmonics**

3rd Harmonic	17.75%
5th Harmonic	9.42%
7th Harmonic	5.57%
9th Harmonic	2.93%
11th Harmonic	0.7%



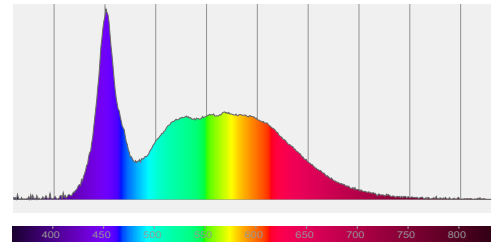
## 169-308 5700K specific configuration

### Colour measurement details

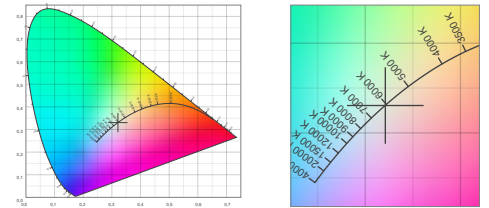
Total lumen output 1141 lm  
 Correlated Colour Temperature 6062 K  
 Colour coordinates CIE 1931 (x;y) = (0.321;0.331)  
 Colour deviation from BBL Duv = -0.0001

TM30-18 Colour Fidelity Index  $R_f$  83.9  
 TM30-18 Colour Gamut Index  $R_g$  97.0  
 Colour Rendering Index (Ra) CRI 85.2  
 Colour Rendering Index. (red component)  $R_9 = 20.4$

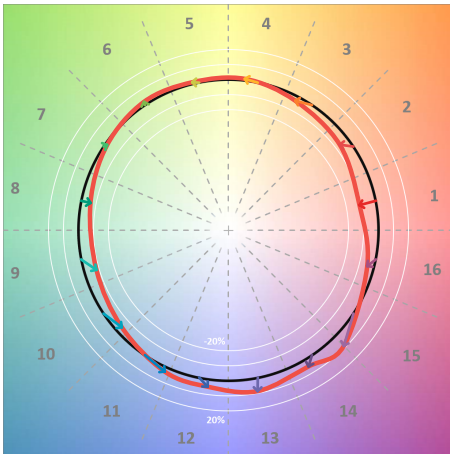
Colour Quality Scale CQS = 81.6  
 Television Lighting Consistency Index TLCI = 77



Relative spectral power distribution



### TM30 details

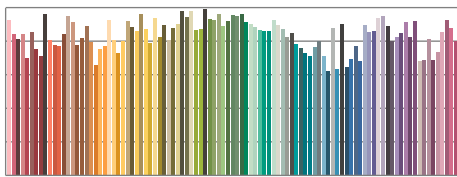


TM30 Colour vectors per hue bin

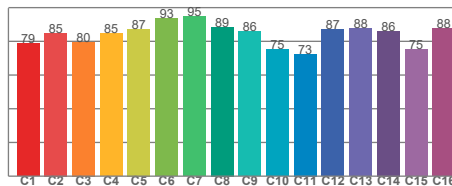


TM30 Colour distortion

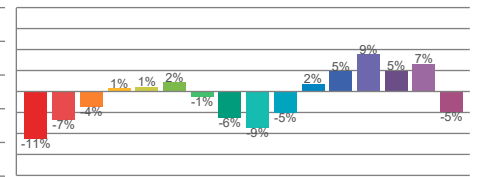
Hue Bin	$R_f$	Shifts (%)	
		Chroma	Hue
C1	79	-11%	-1%
C2	85	-7%	6%
C3	80	-4%	11%
C4	85	1%	9%
C5	87	1%	4%
C6	93	2%	-1%
C7	95	-1%	-2%
C8	89	-6%	0%
C9	86	-9%	9%
C10	75	-5%	14%
C11	73	2%	17%
C12	87	5%	7%
C13	88	9%	-2%
C14	86	5%	-6%
C15	75	7%	-21%
C16	88	-5%	-6%



TM30-18  $R_f$ -values per reference colour

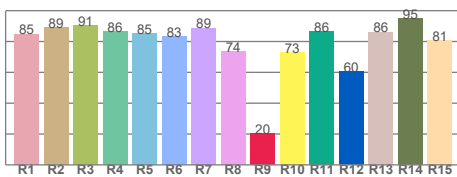


TM30-18  $R_f$ -values per hue bin

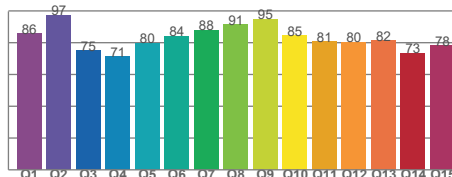


TM30 Chroma shift

### Colour Quality details



Colour Rendering Index



Colour Quality Scale