



169-308 4000K specific configuration  
Track spot | 3-phase | white | linear | 3-CCT | dim

Introduction

**Purpose of this Document**

This document provides information for 169-308 4000K . During measurement, the product is used in a different mode where output power, colour temperature and/or beam angle are changed from factory standard. These adjustments can be made without altering the product and are designed to be set by the installer. In most cases, the options are set through switches on the product.

**Results**

Total input power	14.6 W
Correlated Colour Temperature	4202 K
Total lumen output	1136 lm
Efficiency	78 lm/W

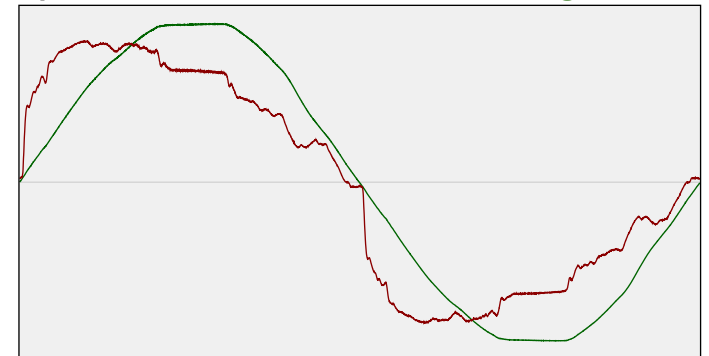
Electrical measurement details

**Input Power**

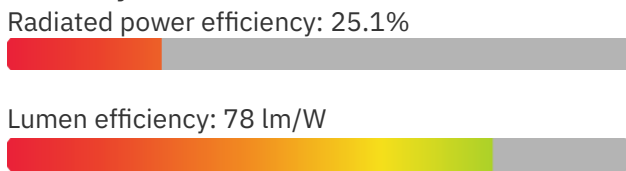
RMS Input voltage feed, $V_{RMS}$	234 V
RMS Input current feed, $I_{RMS}$	0.068 A
Total input power	14.6 W
Frequency of input power	50 Hz
Power factor	0.92
Displacement power factor	0.94
Total harmonic distortion of the current	22.1%
Total harmonic distortion of the voltage	2.51%

**Input Power Curve**

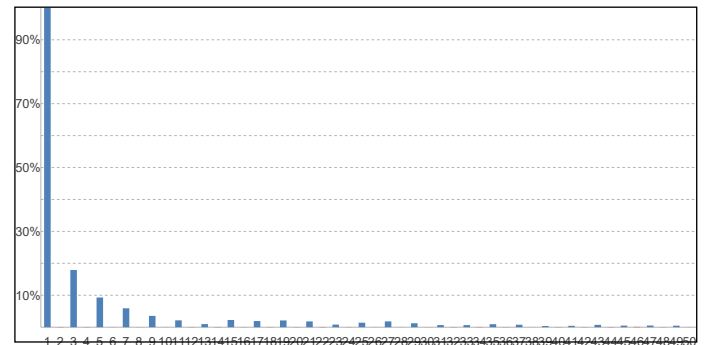
Voltage - Current



**Efficiency**



**Current Harmonics %**



**Harmonics**

3rd Harmonic	17.91%
5th Harmonic	9.3%
7th Harmonic	5.92%
9th Harmonic	3.54%
11th Harmonic	2.15%



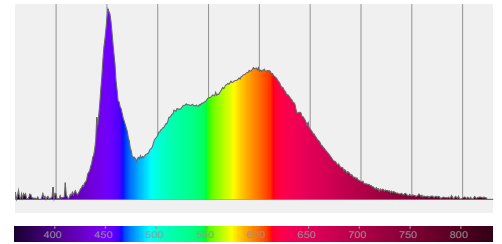
## 169-308 4000K specific configuration

### Colour measurement details

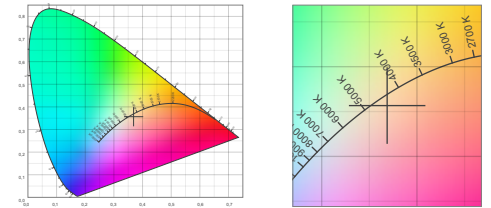
Total lumen output 1136 lm  
 Correlated Colour Temperature 4202 K  
 Colour coordinates CIE 1931 (x;y) = (0.369;0.357)  
 Colour deviation from BBL Duv = -0.0061

TM30-18 Colour Fidelity Index  $R_f$  85.4  
 TM30-18 Colour Gamut Index  $R_g$  98.2  
 Colour Rendering Index (Ra) CRI 87.5  
 Colour Rendering Index. (red component)  $R_9 = 30.0$

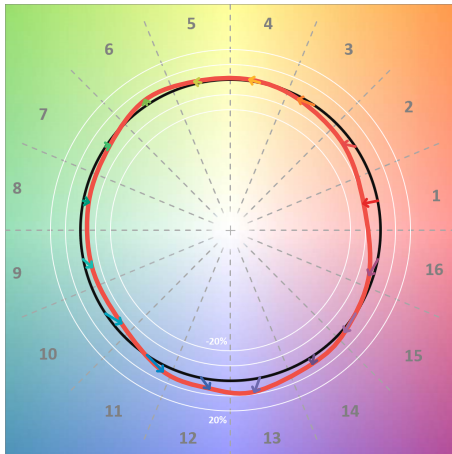
Colour Quality Scale CQS = 83.9  
 Television Lighting Consistency Index TLCI = 74



Relative spectral power distribution



### TM30 details

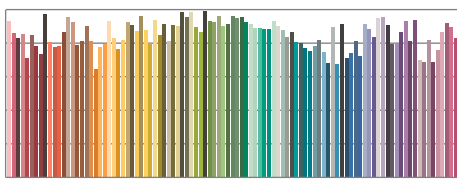


TM30 Colour vectors per hue bin

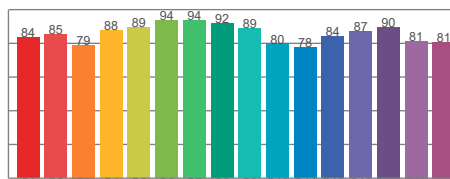


TM30 Colour distortion

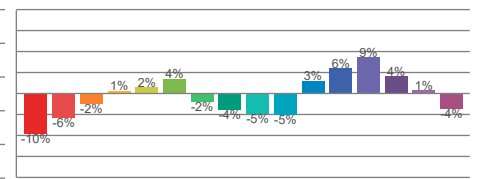
Hue Bin	$R_f$	Shifts (%)	
		Chroma	Hue
C1	84	-10%	0%
C2	85	-6%	6%
C3	79	-2%	11%
C4	88	1%	7%
C5	89	2%	4%
C6	94	4%	-1%
C7	94	-2%	-2%
C8	92	-4%	0%
C9	89	-5%	6%
C10	80	-5%	11%
C11	78	3%	15%
C12	84	6%	7%
C13	87	9%	-5%
C14	90	4%	-4%
C15	81	1%	-14%
C16	81	-4%	-11%



TM30-18  $R_f$ -values per reference colour

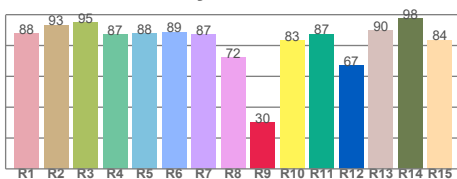


TM30-18  $R_f$ -values per hue bin

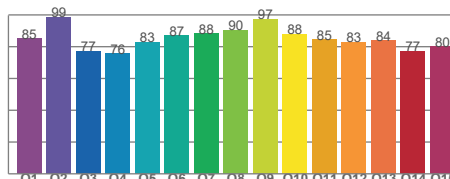


TM30 Chroma shift

### Colour Quality details



Colour Rendering Index



Colour Quality Scale

Document revision date: 8-7-2025 Measurement serial: VFR-250707-10355-SW