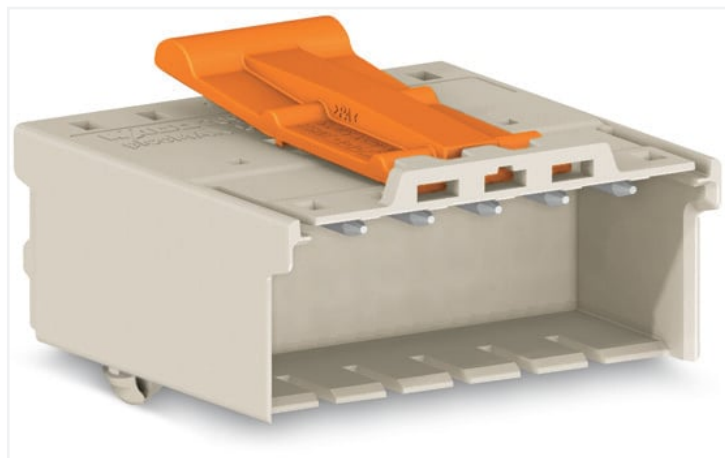


Data Sheet | Item Number: 2092-1523/020-000

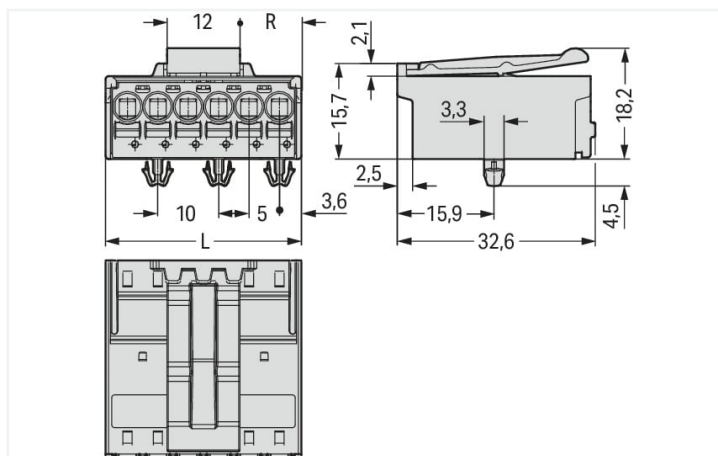
1-conductor male connector; Push-in CAGE CLAMP®; 2.5 mm²; Pin spacing 5 mm;
3-pole; DIN-35 rail/panel mounting; Snap-in mounting feet; Integrated release lever;
2,50 mm²; light gray

<https://www.wago.com/2092-1523/020-000>



Color: ■ light gray

Similar to illustration

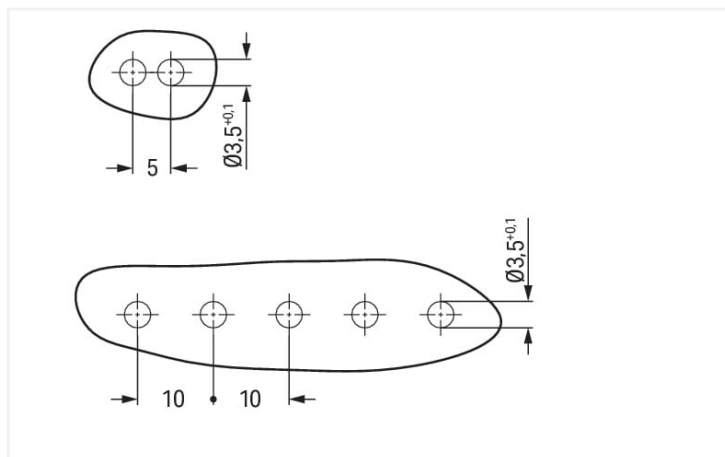


Dimensions in mm

$L = (\text{pole no.} \times \text{pin spacing}) + 2.2 \text{ mm}$

Even pole number $R = (L - 12 \text{ mm}) : 2$

Odd pole number $R = (L - 17 \text{ mm}) : 2$



Dimensions in mm

- Universal connection for all conductor types
- Simple, push-in termination of solid and ferruled conductors
- Easy-to-use design does not require special tools
- Testing parallel to conductor entry – tip contact
- For "wire-to-wire" and "board-to-wire" connections
- Integrated release lever

Notes

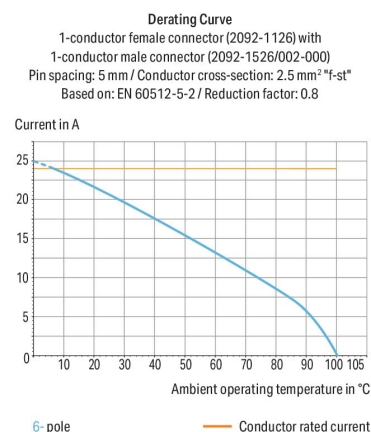
Safety information

Variants:

The **picoMAX® Pluggable Connection System** includes connectors without breaking capacity in accordance with DIN EN 61984. When used as intended, these connectors must not be connected/disconnected when live or under load. The circuit design should ensure header pins, which can be touched, are not live when unmated.

Direct marking

Other versions (or variants) can be requested from WAGO Sales or configured at <https://configurator.wago.com/>.





Electrical data							
Ratings per		IEC/EN 60664-1		Approvals per		UL 1059	
Overvoltage category	III	III	II	Use group	B	C	D
Pollution degree	3	2	2	Rated voltage	300 V	-	300 V
Nominal voltage	250 V	320 V	630 V	Rated current	15 A	-	10 A
Rated surge voltage	4 kV	4 kV	4 kV				
Rated current	16 A	16 A	16 A				

Connection data							
Connection points	3			Connection 1			
Total number of potentials	3			Connection technology	Push-in CAGE CLAMP®		
Number of connection types	1			Actuation type	Push-button		
Number of levels	1			Actuation direction 1	Operation parallel to conductor entry		
				Solid conductor	0.2 ... 2.5 mm² / 24 ... 12 AWG		
				Fine-stranded conductor	0.2 ... 2.5 mm² / 24 ... 12 AWG		
				Fine-stranded conductor; with insulated ferrule	0.25 ... 1.5 mm²		
				Fine-stranded conductor; with uninsulated ferrule	0.25 ... 2.5 mm²		
				Strip length	9 ... 10 mm / 0.35 ... 0.39 inches		
				Pole number	3		

Physical data	
Pin spacing	5 mm / 0.197 inches
Width	17.2 mm / 0.677 inches
Height	22.7 mm / 0.894 inches
Height from the surface	18.2 mm / 0.717 inches
Depth	32.6 mm / 1.283 inches

Mechanical data	
Variable coding	Yes
Housing sheet thickness	0.6 ... 1.2 mm / 0.024 ... 0.047 inches
Mounting type	Snap-in foot
Anti-rotation protection	Yes

Plug-in connection	
Contact type (pluggable connector)	Male connector/plug
Connector (connection type)	for conductor
Mismating protection	No
Plugging without loss of pin spacing	Yes
Locking of plug-in connection	Locking latch



Material data	
Note (material data)	Information on material specifications can be found here
Color	light gray
Material group	I
Insulation material	Polyphthalamide (PPA GF)
Flammability class per UL94	V0
Clamping spring material	Chrome-nickel spring steel (CrNi)
Contact material	Electrolytic copper (E _{Cu})
Contact plating	Tin
Fire load	0.083 MJ
Weight	6.7 g

Environmental requirements	
Limit temperature range	-60 ... +100 °C
Processing temperature	-35 ... +60 °C

Commercial data	
Product Group	26 (picoMAX Connectors)
eCl@ss 10.0	27-14-11-06
eCl@ss 9.0	27-14-11-06
ETIM 8.0	EC001284
ETIM 7.0	EC001284
PU (SPU)	100 pcs
Packaging type	Box
Country of origin	DE
GTIN	4050821164265
Customs tariff number	85366930000

Environmental Product Compliance	
RoHS Compliance Status	Compliant, No Exemption


Approvals / Certificates

General approvals



Approval	Standard	Certificate Name
CB DEKRA Certification B.V.	IEC 61984	NL-49737/A1
CSA DEKRA Certification B.V.	C22.2	2362521
CSA DEKRA Certification B.V.	C22.2 No. 158	2362521
cURus Underwriters Laboratories Inc.	UL 1059	E45172
KEMA/KEUR DEKRA Certification B.V.	EN 61984	71-102261 REV.2
UL Underwriters Laboratories Inc.	UL 1977	E45171



Downloads			
Environmental Product Compliance			
Compliance Search			
Environmental Product Compliance	2092-1523/020-000		

Documentation			
Additional Information			
Technical Section	03.04.2019	pdf 2010.85 KB	

CAD/CAE-Data			
CAD data		CAE data	
2D/3D Models	2092-1523/020-000	ZUKEN Portal	2092-1523/020-000
	