



950-181 40W 4000K specific configuration
 Tri-proof lightbar | 1260mm | 40W | 3-CCT | sensor

Introduction

Purpose of this Document

This document provides information for 950-181 40W 4000K. During measurement, the product is used in a different mode where output power, colour temperature and/or beam angle are changed from factory standard. These adjustments can be made without altering the product and are designed to be set by the installer. In most cases, the options are set through switches on the product.

Results

Total input power	36.9 W
Correlated Colour Temperature	4352 K
Total lumen output	5164 lm
Efficiency	140 lm/W

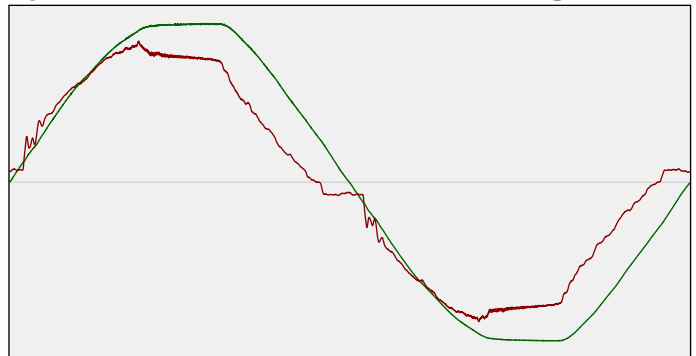
Electrical measurement details

Input Power

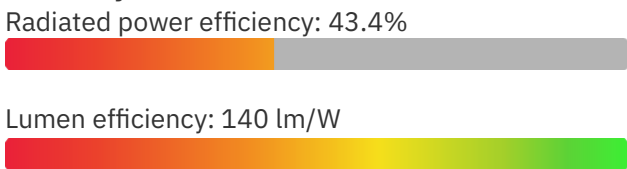
RMS Input voltage feed, V_{RMS}	230 V
RMS Input current feed, I_{RMS}	0.166 A
Total input power	36.9 W
Frequency of input power	50 Hz
Power factor	0.97
Displacement power factor	0.97
Total harmonic distortion of the current	10.75%
Total harmonic distortion of the voltage	2.55%

Input Power Curve

Voltage - Current



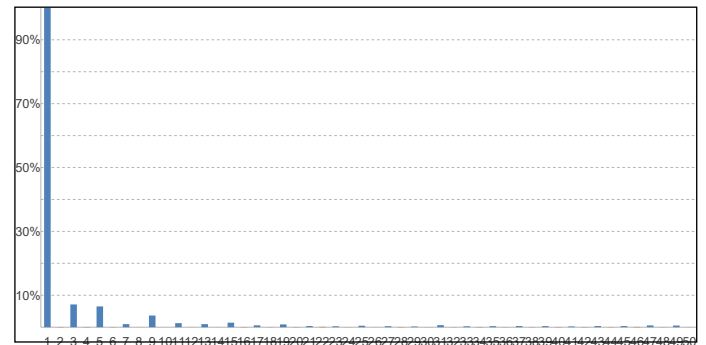
Efficiency



Current Harmonics %

Harmonics

3rd Harmonic	7.13%
5th Harmonic	6.51%
7th Harmonic	0.97%
9th Harmonic	3.65%
11th Harmonic	1.27%





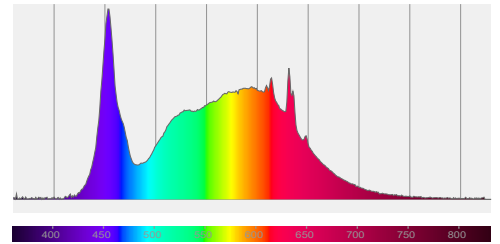
950-181 40W 4000K specific configuration

Colour measurement details

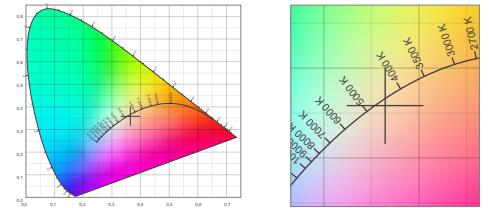
Total lumen output 5164 lm
 Correlated Colour Temperature 4352 K
 Colour coordinates CIE 1931 (x;y) = (0.364;0.358)
 Colour deviation from BBL Duv = -0.0039

TM30-18 Colour Fidelity Index R_f 84.0
 TM30-18 Colour Gamut Index R_g 97.3
 Colour Rendering Index (Ra) CRI 86.3
 Colour Rendering Index. (red component) $R_9 = 29.1$

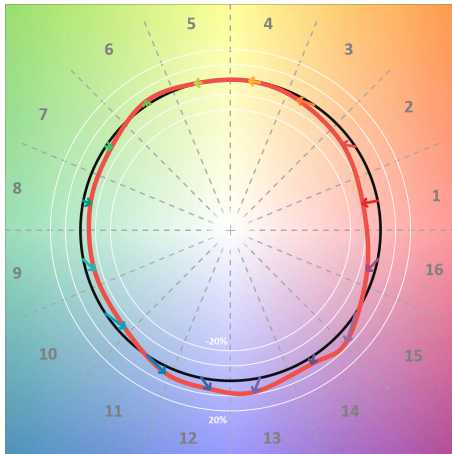
Colour Quality Scale CQS = 82.9
 Television Lighting Consistency Index TLCI = 75



Relative spectral power distribution



TM30 details

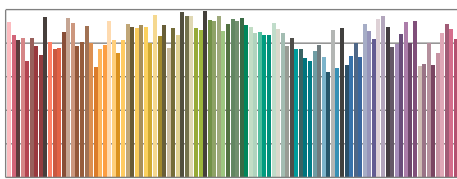


TM30 Colour vectors per hue bin

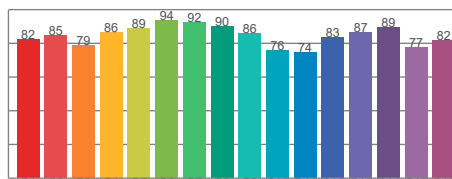


TM30 Colour distortion

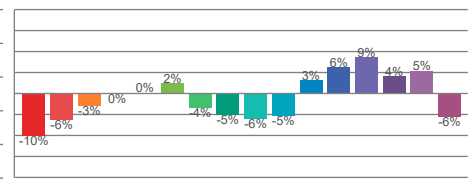
Hue Bin	R_f	Shifts (%)	
		Chroma	Hue
C1	82	-10%	0%
C2	85	-6%	6%
C3	79	-3%	11%
C4	86	0%	7%
C5	89	0%	4%
C6	94	2%	-1%
C7	92	-4%	-2%
C8	90	-5%	1%
C9	86	-6%	8%
C10	76	-5%	15%
C11	74	3%	16%
C12	83	6%	7%
C13	87	9%	-5%
C14	89	4%	-4%
C15	77	5%	-19%
C16	82	-6%	-9%



TM30-18 R_f -values per reference colour

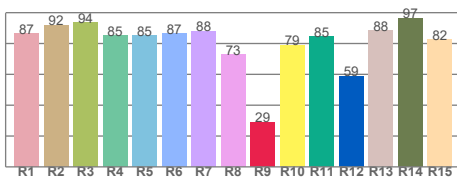


TM30-18 R_f -values per hue bin

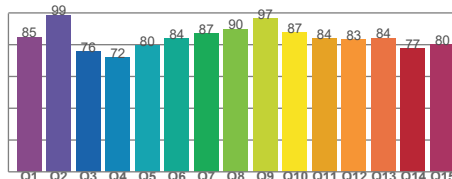


TM30 Chroma shift

Colour Quality details



Colour Rendering Index



Colour Quality Scale