



950-087 25W 4000K specific configuration
 Tri-proof lightbar | 1260mm | IP65 | 25/30/35/40W | 3-CCT

Introduction

Purpose of this Document

This document provides information for 950-087 25W 4000K. During measurement, the product is used in a different mode where output power, colour temperature and/or beam angle are changed from factory standard. These adjustments can be made without altering the product and are designed to be set by the installer. In most cases, the options are set through switches on the product.

Results

Total input power	22.0 W
Correlated Colour Temperature	4430 K
Total lumen output	3016 lm
Efficiency	137 lm/W

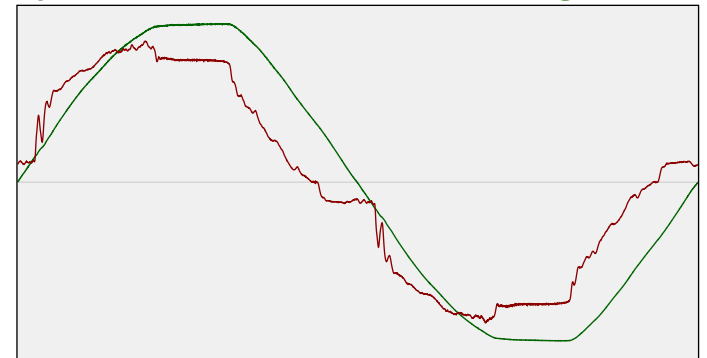
Electrical measurement details

Input Power

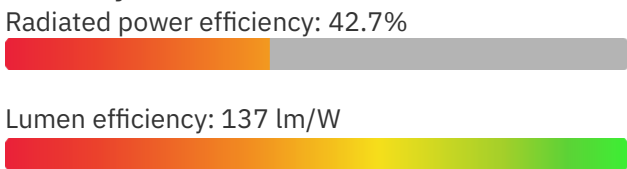
RMS Input voltage feed, V_{RMS}	229 V
RMS Input current feed, I_{RMS}	0.103 A
Total input power	22.0 W
Frequency of input power	50 Hz
Power factor	0.93
Displacement power factor	0.94
Total harmonic distortion of the current	13.24%
Total harmonic distortion of the voltage	2.51%

Input Power Curve

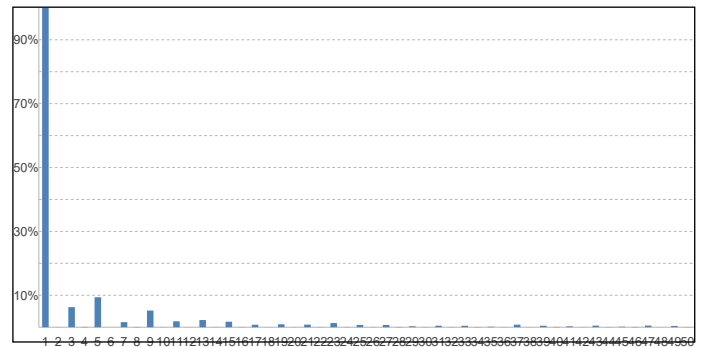
Voltage - Current



Efficiency



Current Harmonics %



Harmonics

3rd Harmonic	6.27%
5th Harmonic	9.38%
7th Harmonic	1.58%
9th Harmonic	5.22%
11th Harmonic	1.85%



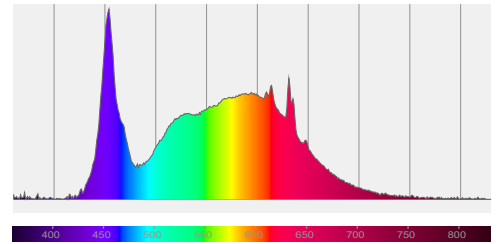
950-087 25W 4000K specific configuration

Colour measurement details

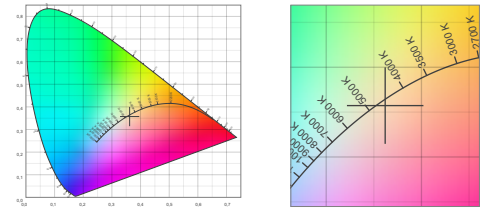
Total lumen output 3016 lm
 Correlated Colour Temperature 4430 K
 Colour coordinates CIE 1931 (x;y) = (0.362;0.357)
 Colour deviation from BBL Duv = -0.0035

TM30-18 Colour Fidelity Index R_f 83.9
 TM30-18 Colour Gamut Index R_g 97.1
 Colour Rendering Index (Ra) CRI 86.3
 Colour Rendering Index. (red component) $R_9 = 28.6$

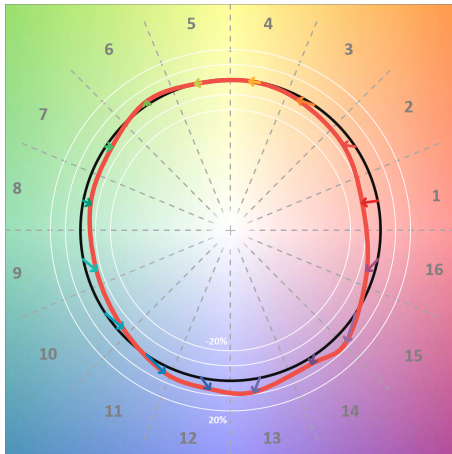
Colour Quality Scale CQS = 82.8
 Television Lighting Consistency Index TLCI = 76



Relative spectral power distribution



TM30 details

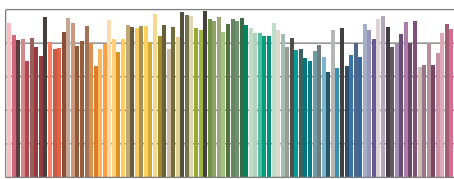


TM30 Colour vectors per hue bin

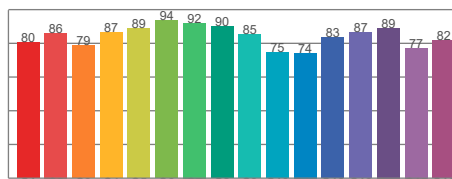


TM30 Colour distortion

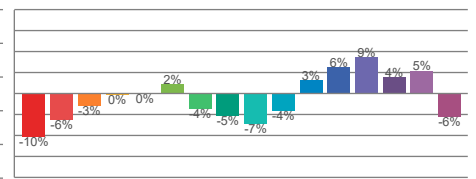
Hue Bin	R_f	Shifts (%)	
		Chroma	Hue
C1	80	-10%	1%
C2	86	-6%	5%
C3	79	-3%	11%
C4	87	0%	7%
C5	89	0%	4%
C6	94	2%	-1%
C7	92	-4%	-2%
C8	90	-5%	1%
C9	85	-7%	9%
C10	75	-4%	14%
C11	74	3%	16%
C12	83	6%	7%
C13	87	9%	-6%
C14	89	4%	-4%
C15	77	5%	-19%
C16	82	-6%	-9%



TM30-18 R_f -values per reference colour

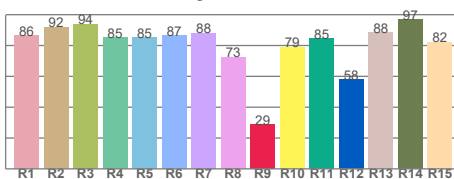


TM30-18 R_f -values per hue bin

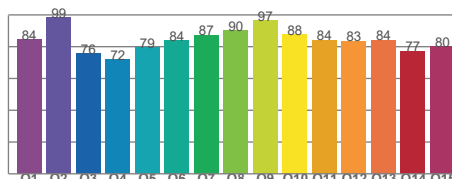


TM30 Chroma shift

Colour Quality details



Colour Rendering Index



Colour Quality Scale