



950-186 40W 3000K specific configuration
 Tri-proof lightbar | 1260mm | 40W | 3-CCT | sensor dim

Introduction

Purpose of this Document

This document provides information for 950-186 40W 3000K. During measurement, the product is used in a different mode where output power, colour temperature and/or beam angle are changed from factory standard. These adjustments can be made without altering the product and are designed to be set by the installer. In most cases, the options are set through switches on the product.

Results

| | |
|-------------------------------|----------|
| Total input power | 38.0 W |
| Correlated Colour Temperature | 3110 K |
| Total lumen output | 5013 lm |
| Efficiency | 132 lm/W |

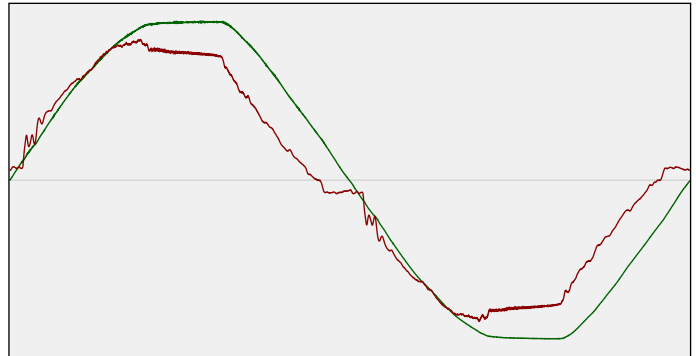
Electrical measurement details

Input Power

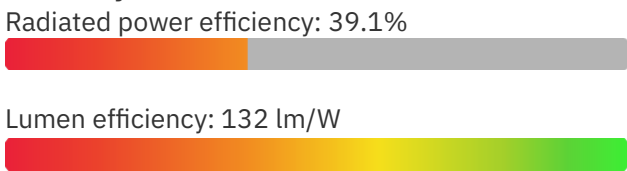
| | |
|--|---------|
| RMS Input voltage feed, V_{RMS} | 230 V |
| RMS Input current feed, I_{RMS} | 0.171 A |
| Total input power | 38.0 W |
| Frequency of input power | 50 Hz |
| Power factor | 0.97 |
| Displacement power factor | 0.97 |
| Total harmonic distortion of the current | 10.41% |
| Total harmonic distortion of the voltage | 2.57% |

Input Power Curve

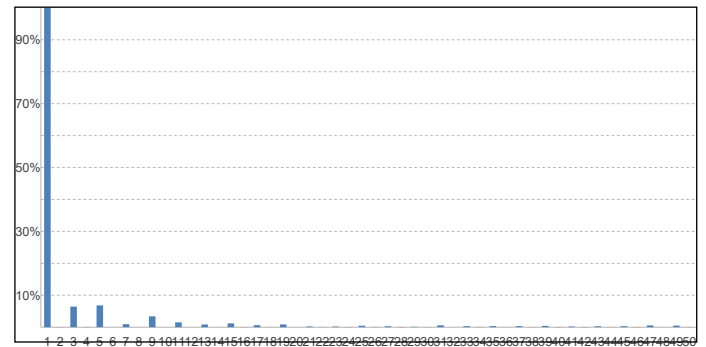
Voltage - Current



Efficiency



Current Harmonics %



Harmonics

| | |
|---------------|-------|
| 3rd Harmonic | 6.45% |
| 5th Harmonic | 6.83% |
| 7th Harmonic | 0.95% |
| 9th Harmonic | 3.4% |
| 11th Harmonic | 1.52% |



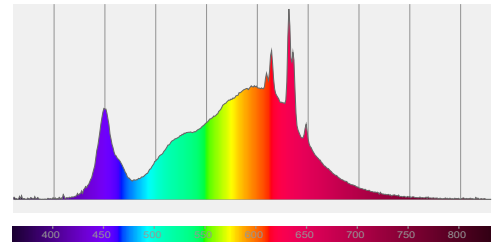
950-186 40W 3000K specific configuration

Colour measurement details

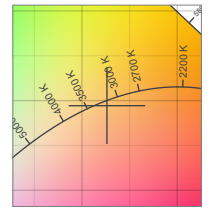
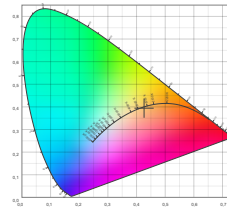
Total lumen output 5013 lm
 Correlated Colour Temperature 3110 K
 Colour coordinates CIE 1931 (x;y) = (0.426;0.394)
 Colour deviation from BBL Duv = -0.0024

TM30-18 Colour Fidelity Index R_f 84.2
 TM30-18 Colour Gamut Index R_g 99.0
 Colour Rendering Index (Ra) CRI 84.5
 Colour Rendering Index. (red component) $R_9 = 19.3$

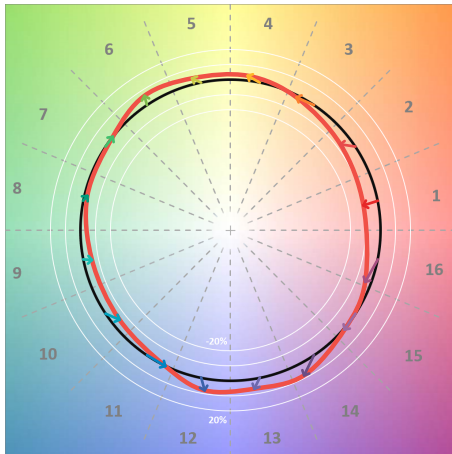
Colour Quality Scale CQS = 82.1
 Television Lighting Consistency Index TLCI = 69



Relative spectral power distribution



TM30 details

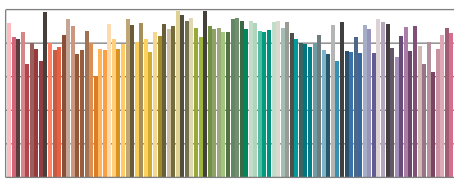


TM30 Colour vectors per hue bin

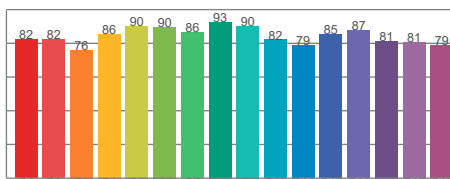


TM30 Colour distortion

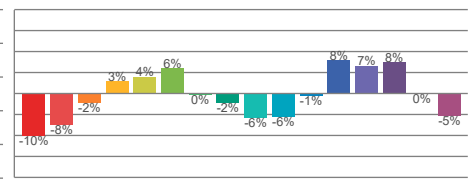
| Hue Bin | R_f | Shifts (%) | |
|---------|-------|------------|------|
| | | Chroma | Hue |
| C1 | 82 | -10% | -1% |
| C2 | 82 | -8% | 7% |
| C3 | 76 | -2% | 12% |
| C4 | 86 | 3% | 9% |
| C5 | 90 | 4% | 5% |
| C6 | 90 | 6% | -2% |
| C7 | 86 | 0% | -8% |
| C8 | 93 | -2% | -4% |
| C9 | 90 | -6% | 2% |
| C10 | 82 | -6% | 9% |
| C11 | 79 | -1% | 14% |
| C12 | 85 | 8% | 4% |
| C13 | 87 | 7% | -5% |
| C14 | 81 | 8% | -13% |
| C15 | 81 | 0% | -13% |
| C16 | 79 | -5% | -16% |



TM30-18 R_f -values per reference colour

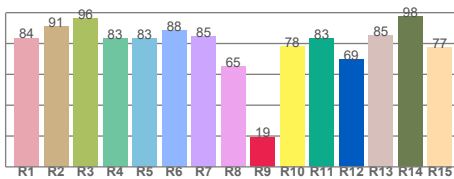


TM30-18 R_f -values per hue bin

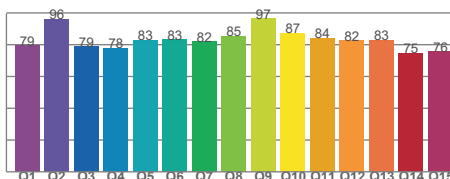


TM30 Chroma shift

Colour Quality details



Colour Rendering Index



Colour Quality Scale