



PHILIPS

Retrofit trunking

Retrofit trunking solutions

The easy way to switch from conventional to LED lighting

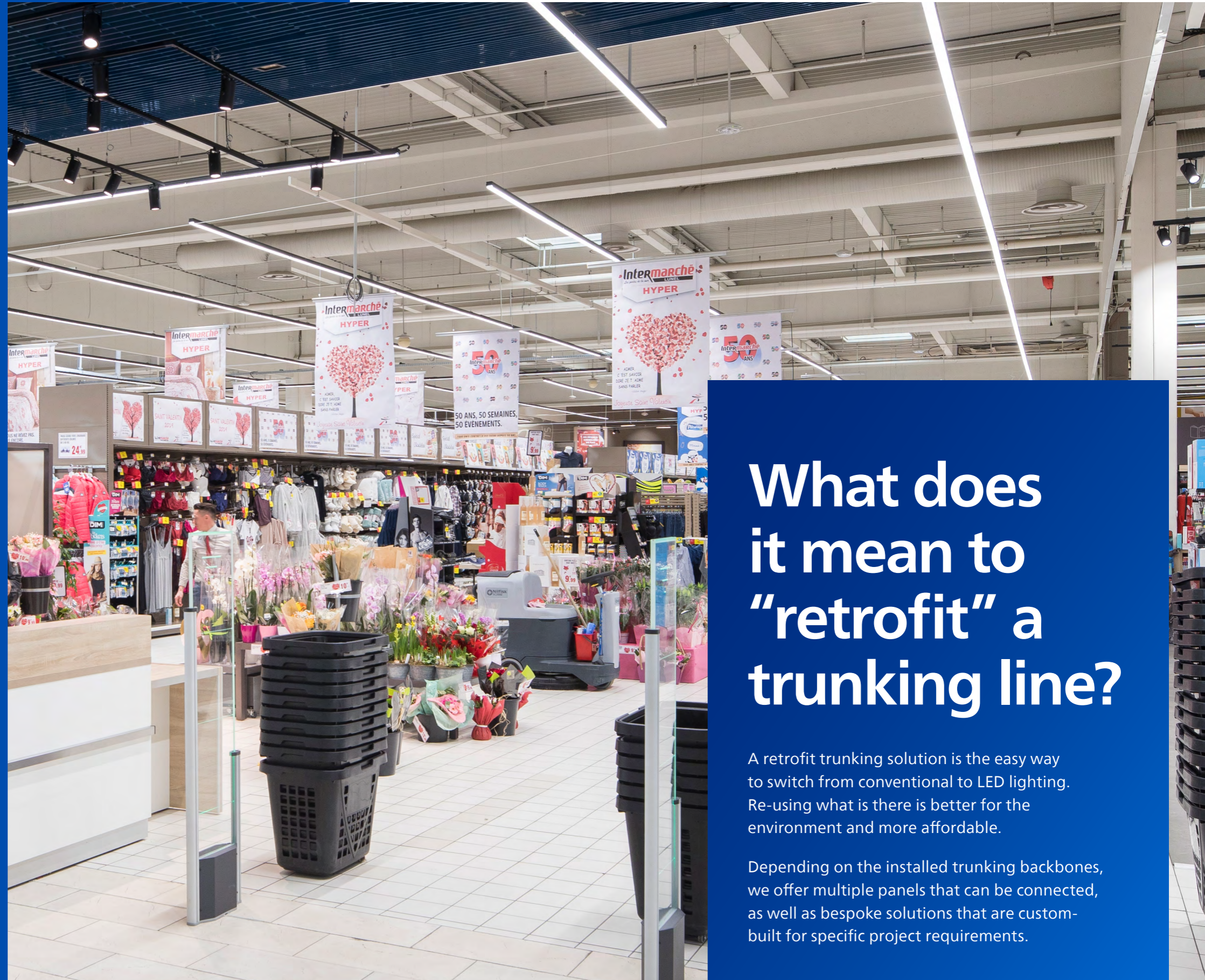
Life after fluorescent lighting

As of September 2023, fluorescent tube lights have been banned in the EU and UK, pushing businesses to seek simple and cost-effective solutions to switch out their existing lighting.

But replacing an entire lighting infrastructure can be expensive and time consuming. In addition, it remains a high priority to be more sustainable and reduce energy usage, while providing good quality lighting for a comfortable working environment and a welcoming ambience for customers.

Retrofit trunking solutions can help businesses meet all of these concerns. Businesses can re-use existing trunking backbones and simply upgrade their lighting to meet the latest technological standards for efficacy.

We have a long, successful history of providing top-quality lighting products under the Philips brand, and a proven track record of designing, planning, and executing renovation roll-out programs with customers.



What does it mean to “retrofit” a trunking line?

A retrofit trunking solution is the easy way to switch from conventional to LED lighting. Re-using what is there is better for the environment and more affordable.

Depending on the installed trunking backbones, we offer multiple panels that can be connected, as well as bespoke solutions that are custom-built for specific project requirements.

Why choose a Philips retrofit trunking solution?



We have flexible solutions that fit a big part of the existing fluorescent trunks



Save more than 55% energy compared to fluorescent installations



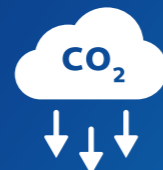
Long LED lifetimes for less re-lamping than with fluorescent



Brighten workplaces with high-quality, industry-compliant LED lighting



Lower a facility's W/m² load



Reduce carbon footprints by re-using the existing electrical infrastructure

Retrofit panels to work with existing trunking

We offer a range of retrofit panels, so that your customers can enjoy the benefits of LED lighting, whether their existing trunking is Maxos fluorescent, TTX400, or a non-Philips solution.

Maxos fluorescent



Maxos LED Industry (4MX850)

TTX400



Maxos LED Insert for TTX400 (4MX400)

Fits on non-Philips trunks



Maxos universal

Maxos LED Industry 4MX850 and Maxos LED Inserts 4MX400

Maxos LED panels have a functional design with six dedicated beam shapes and an upgradeable and modular architecture that combines with Philips controls and accent lighting. Featuring light output of up to 8,000 lumens per 1.5 m, good glare control, and high efficacy up to 169 lm/W, these inserts are also dimmable, allowing for even more energy savings.

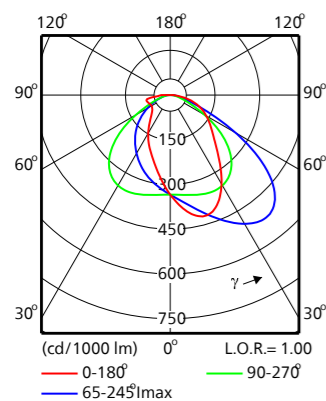
Separate light units can be retrofitted to existing Maxos or TTX400 trunking rails. The 4MX850 (Maxos LED Industry) light unit is compatible with Maxos TL trunks while the 4MX400 light unit is designed to convert a TTX400 fluorescent installation.



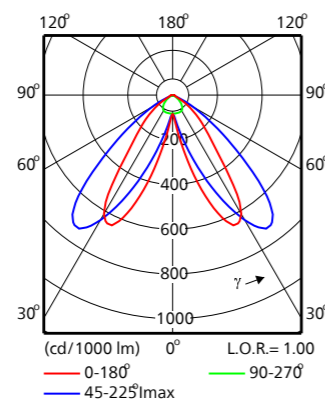
Maxos LED Industry 4MX850

Maxos LED Inserts 4MX400

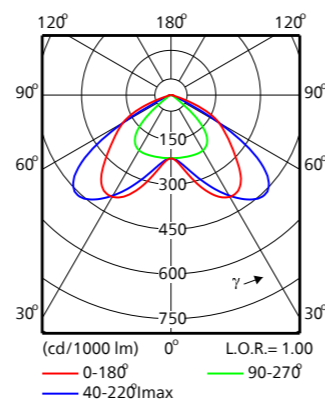
Beam shape diagrams



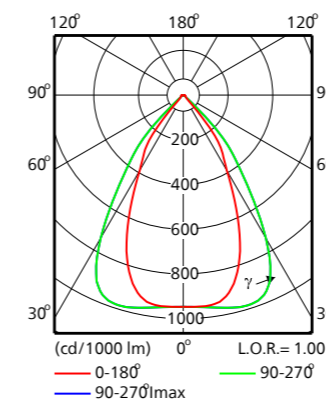
Asymmetric 20deg



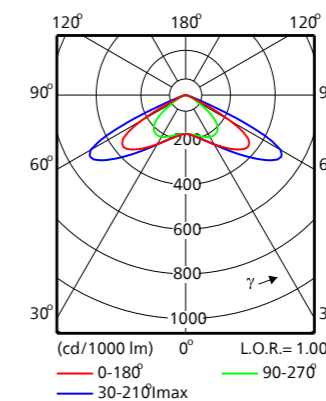
Double asymmetric 20deg



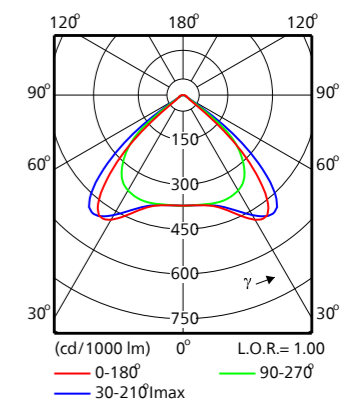
Double asymmetric 35deg



Narrow beam



Very wide beam



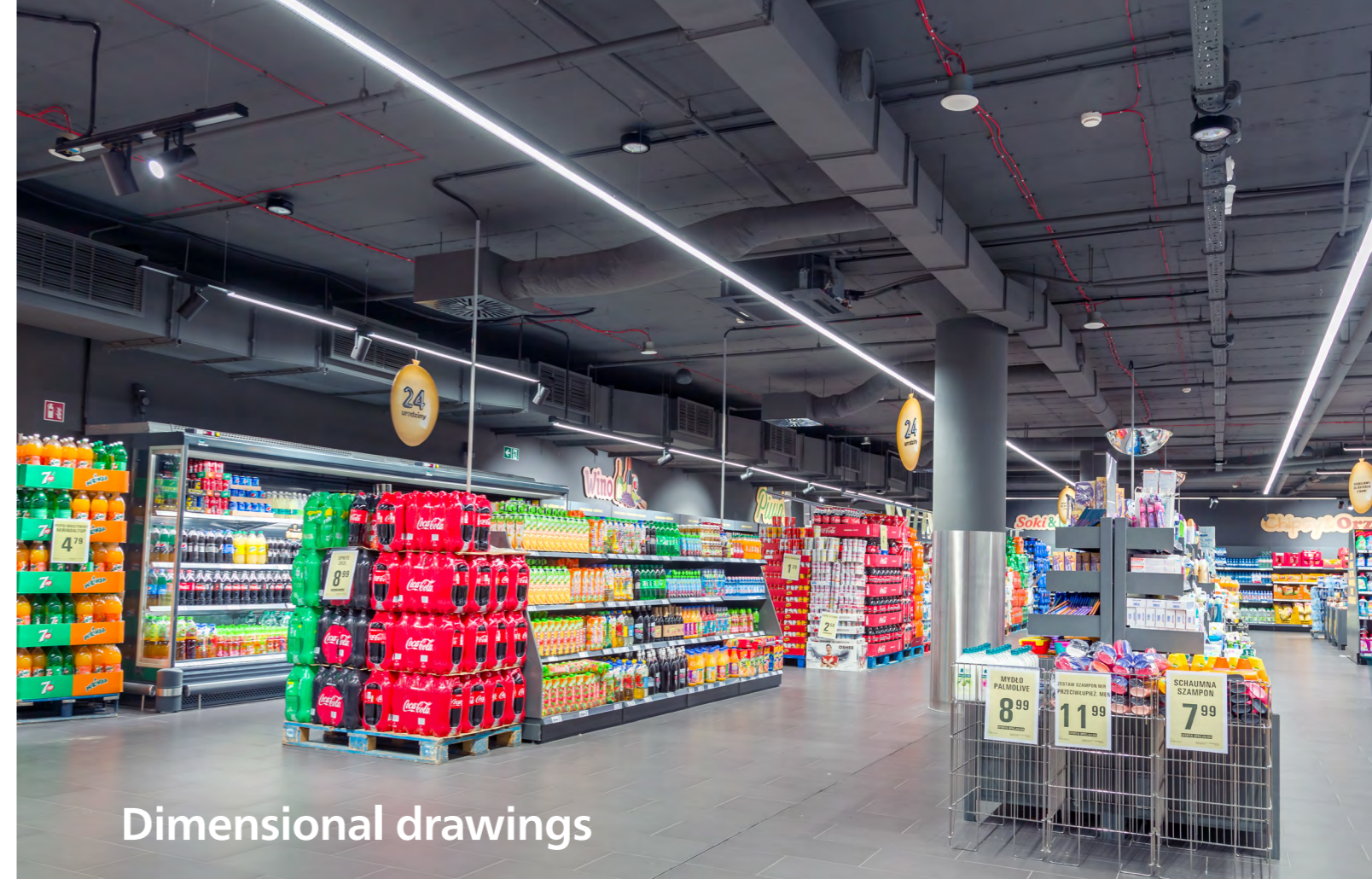
Wide beam

Technical details

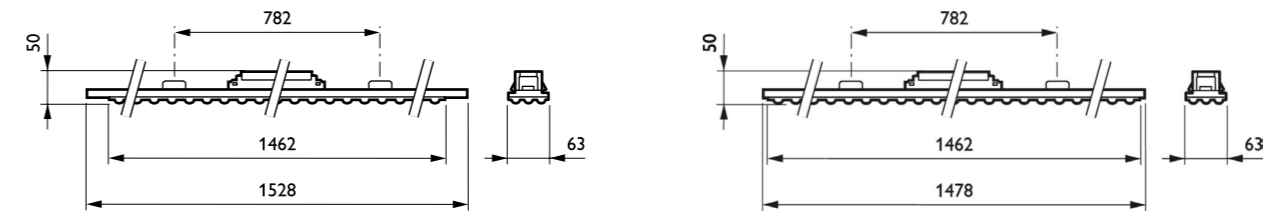
| | |
|---|---|
| Light panel | Maxos LED Industry (4MX850) for Maxos light lines Maxos LED Insert (4MX400) for TTX400 light lines |
| Flux offer | Up to 8,000 lm |
| Efficacy | Up to 169 lm/W |
| UGR | 16 for narrow beam 22 for wide beam |
| Correlated color temperature | 3000K 4000K |
| Color Rendering Index | >80 |
| Lumen maintenance at 50,000 hours | L90 |
| Lumen maintenance at 100,000 hours | L80 |
| Power/Data supply | On/off (non dimmable), DALI dimmable and Interact Ready |
| Mains voltage | 220-240 V / 50-60 Hz |
| Color | White (WH) and Silver (SI) |
| Connection | Electrical contact via standard Maxos through-wiring connector |
| Maintenance | Via clicking out the electrical unit from the rail |
| Installation | Fixation on the Maxos and TTX400 Trunking rails with springs |

| | Flux (lm) | Power | Efficacy |
|---------------|-----------|-------|----------|
| LED405 | 4,000 | 24 | 166.67 |
| LED555 | 5,500 | 32.5 | 169.23 |
| LED665 | 6,600 | 39 | 169.23 |
| LED805 | 8,000 | 48 | 166.67 |

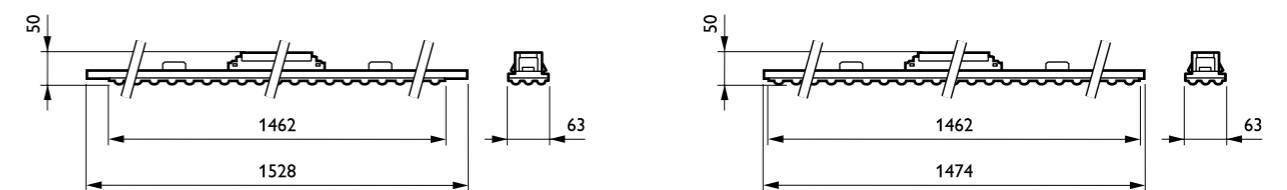
CCT 4000K



Dimensional drawings



Maxos LED Industry (4MX850)



Maxos LED Insert (4MX400)



Maxos universal

Maxos universal is a dedicated portfolio of light panels designed to fit into diverse installed trunking backbones. The light panels carry new through-wiring, reducing dependence on old installation wiring. The old trunks are used only for securing the panels, which can be done with two included sets of specially designed springs. Together, these spring sets ensure a working solution for all compatible trunks. Maxos universal panels are also equipped with a dip switch driver for easily configuring the required lumen output at the project site. In addition, the Maxos universal portfolio offers easy-to-use accessories like blind units/feed-in connectors and through-wiring harnesses.

Technical details

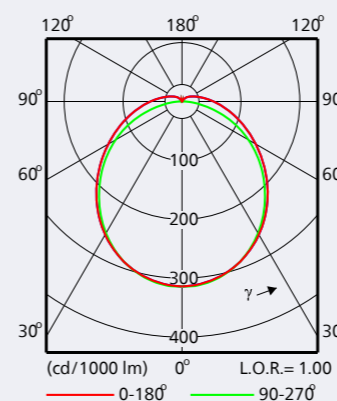
| | |
|---|--|
| Light panel | Maxos universal |
| Flux offer | Up to 8,000 lm. Choice of 4,700 lm or 5,900 lm selected via dip switch. |
| Efficacy | Up to 168 lm/W |
| Correlated color temperature | 3000K 4000K |
| Color Rendering Index | >80 |
| Lumen maintenance at 50,000 hours | L90 |
| Lumen maintenance at 100,000 hours | L80 |
| Power supply | On/off (non dimmable - flux selection via dip switch), DALI dimmable |
| Mains voltage | 220-240 V / 50-60 Hz |
| Color | White (WH) |
| Installation | Fixation on compatible rails. Refer to the compatibility list. |



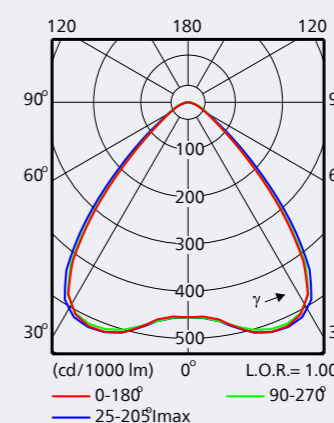
| 12NC | Luminaire description | Lumen output (lm) | System power (W) | Luminaire Efficacy (lm/W) |
|--------------|--|-------------------|------------------|---------------------------|
| 929001695106 | LL515S 46S_57S/840 WB PSU UNIV TW3 WH | 4,700 | 28 | 168 |
| 929001695106 | LL515S 46S_57S/840 WB PSU UNIV TW3 WH | 5,900 | 35.5 | 166 |
| 929001681706 | LL515S 42S/840 PSD WB UNIV TW3 WH | 4,200 | 25 | 168 |
| 929001694906 | LL515S 80S/840 PSD WB UNIV TW3 WH | 8,000 | 50 | 160 |
| 910925869515 | LL515S 46S_57S/840 PCO PSU UNIV TW3 WH | 4,200 | 28 | 150 |
| 910925869516 | LL515S 46S_57S/840 PCO PSU UNIV TW3 WH | 5,200 | 35.5 | 146 |
| 910925869517 | LL515S 42S/840 PSD PCO UNIV TW3 WH | 3,700 | 25 | 148 |
| 910925869519 | LL515S 80S/840 PSD PCO UNIV TW3 WH | 7,000 | 50 | 140 |

CCT 4000K

Beam shape diagrams



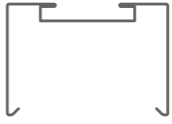


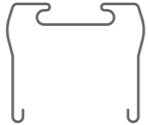

Polycarbonate Opal



Wide beam

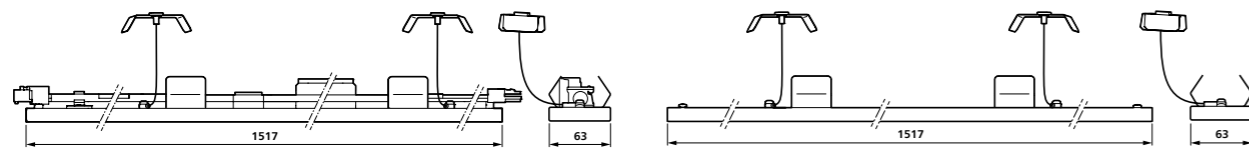
Compatibility list and trunking diagrams

Both spring A and B are included in the box

| System | Spring | | | |
|--------------------|--------|---|--|---|
| Regent | A |  |  |  |
| Regiolux SDT | | Regent | Regiolux SDT | Ridi VLT XX |
| Ridi VLT XX | |  |  | |
| Siemens/Siteco 5LS | | Siemens/Siteco 5LS | Trilux E-Line | |
| Trilux E-Line | | | | |

| System | Spring | | |
|----------------|--------|---|--|
| Siteco Modario | B |  |  |
| Zumtobel ZX2 | | Siteco Modario | Zumtobel ZX2 |

Dimensional drawings



Maxos universal



Bespoke solutions

We can support dedicated requests tailored for a specific customer need. We design, test, and release these bespoke solutions according to the relevant norms. Production and delivery can be scaled at the required pace. Please reach out to your sales representative if you need more information.

Case study: Koopmanndruck

Stuhr, Germany

Druckerei August Koopmann GmbH is an environmentally conscious printer for whom sustainability and climate neutral production are important. The lighting in their 3500 m² production facility needed to be converted to LED.

Print workers specifically need light that is kind to the eyes with excellent color rendering. It was also important to Koopmanndruck that their new lighting was reliable and energy-efficient. They chose Philips Maxos LED, which offers color rendering far exceeding the required standards.

In three days, 800 fluorescent light tubes were replaced with 335 Maxos LED lightlines (with both narrow and wide beam optics). Illumination was increased from 200–300 lux to 700 lux in some spaces, creating a more pleasant, safe, and healthy environment for staff. Koopmanndruck achieved energy savings of up to 67% as compared to fluorescent lighting, CO₂ emissions were reduced by up to 70%, and overall annual savings were estimated at €27,000.

800
fluorescent light
tubes replaced
in just three days

70%
reduction in
CO₂ emissions

67%
energy savings



"Sustainability is an important part of our company policy. But naturally, profitability is also a decisive factor. With LED lighting we achieve both."

Knut Winneckens,
Manager Koopmanndruck

Ordering information

| 4MX850 Maxos LED Industry | | |
|---------------------------|---------------------------------------|-----------------|
| Material | Material description | Full EOC |
| 910500457964 | 4MX850 581 LED80S/840 PSD NB WH | 871869687641199 |
| 910500457965 | 4MX850 581 LED80S/840 PSD WB WH | 871869687643599 |
| 910500460001 | 4MX850 581 LED40S/840 PSD-CLO WB WH | 871869688067899 |
| 910500460003 | 4MX850 581 LED66S/840 PSD-CLO WB WH | 871869688071599 |
| 910500460004 | 4MX850 581 LED80S/840 PSD-CLO WB WH | 871869688073999 |
| 910500460007 | 4MX850 581 LED80S/840 PSD NB WH C-2R | 871869688105799 |
| 910500460008 | 4MX850 581 LED80S/840 PSD WB WH C-2R | 871869688106499 |
| 910500460009 | 4MX850 581 LED66S/840 PSD NB WH C-2R | 871869688107199 |
| 910500460010 | 4MX850 581 LED66S/840 PSD WB WH C-2R | 871869688108899 |
| 910500460011 | 4MX850 491 LED40S/840 PSD-CLO WB WH | 871869688179899 |
| 910500460012 | 4MX850 491 LED55S/840 PSD-CLO WB WH | 871869688181199 |
| 910500460013 | 4MX850 491 LED66S/840 PSD-CLO WB WH | 871869688183599 |
| 910500460014 | 4MX850 491 LED80S/840 PSD-CLO WB WH | 871869688185999 |
| 910500460015 | 4MX850 491 LED55S/840 PSD-CLO NB WH | 871869688187399 |
| 910500460016 | 4MX850 491 LED66S/840 PSD-CLO NB WH | 871869688189799 |
| 910500460017 | 4MX850 491 LED80S/840 PSD-CLO NB WH | 871869688191099 |
| 910500460023 | 4MX850 491 LED80S/840 PSD-CLO DA20 WH | 871869688203099 |
| 910500460042 | 4MX850 491 LED66S/830 PSD DA20 SI | 871869688167599 |
| 910500460043 | 4MX850 491 LED66S/840 PSD DA20 SI | 871869688169999 |
| 910500460048 | 4MX850 581 LED80S/840 PSD VWB WH | 871869688250499 |
| 910500460049 | 4MX850 491 LED80S/840 PSD VWB WH | 871869688251199 |
| 910500460050 | 4MX850 491 LED55S/840 PSD VWB WH | 871869688272699 |
| 910500460052 | 4MX850 491 LED66S/830 PSD WB WH C-2R | 871869688330399 |
| 910500460060 | 4MX850 581 LED66S/830 PSD WB WH | 871869688500099 |
| 910500460067 | 4MX850 491 LED66S/830 PSD VWB WH C-2R | 871869691135899 |
| 910500460070 | 4MX850 581 LED40S/840 PSD WB WH C-2R | 871869691296699 |
| 910500460075 | 4MX850 491 LED80S/840 PSD VWB WH C-2R | 871869691359899 |
| 910500460076 | 4MX850 581 LED80S/840 PSD VWB WH C-2R | 871869691360499 |
| 910500460085 | 4MX850 491 LED80S/830 PSD NB WH | 871869691715299 |

| 4MX850 Maxos LED Industry | | |
|---------------------------|--|-----------------|
| Material | Material description | Full EOC |
| 910500460086 | 4MX850 581 LED55S/840 PSD VWB WH | 871869691775699 |
| 910500460187 | 4MX850 491 LED80S/840 PSD A20 WH | 871869697220599 |
| 910500460215 | 4MX850 491 LED80S/840 PSD DA20 WH | 871869697427899 |
| 910500460216 | 4MX850 491 LED66S/840 PSD DA20 WH C-2R | 871869697428599 |
| 910500460217 | 4MX850 491 LED66S/840 PSD NB WH C-2R | 871869697429299 |
| 910500460218 | 4MX850 491 LED66S/840 PSD WB WH C-2R | 871869697430899 |
| 910500460219 | 4MX850 491 LED80S/840 PSD DA20 WH C-2R | 871869697431599 |
| 910500460220 | 4MX850 491 LED80S/840 PSD NB WH C-2R | 871869697432299 |
| 910500460221 | 4MX850 491 LED80S/840 PSD WB WH C-2R | 871869697433999 |
| 910500460222 | 4MX850 581 LED66S/840 PSD DA20 WH | 871869697434699 |
| 910500460223 | 4MX850 581 LED80S/840 PSD DA20 WH | 871869697435399 |
| 910500460224 | 4MX850 581 LED66S/840 PSD DA20 WH C-2R | 871869697436099 |
| 910500460225 | 4MX850 581 LED80S/840 PSD DA20 WH C-2R | 871869697437799 |
| 910500460226 | 4MX850 581 LED66S/840 PSD-CLO DA20 WH | 871869697438499 |
| 910500460227 | 4MX850 581 LED80S/840 PSD-CLO DA20 WH | 871869697439199 |
| 910500460257 | 4MX883 491 LED55S/840 PSD DA20 WH ELB3 | 871869697500899 |
| 910500460258 | 4MX883 491 LED55S/840 PSD NB WH ELB3 | 871869697501599 |
| 910500460259 | 4MX883 491 LED55S/840 PSD WB WH ELB3 | 871869697502299 |
| 910500460263 | 4MX883 491 LED66S/840 PSD DA20 WH ELB3 | 871869697506099 |
| 910500460264 | 4MX883 491 LED66S/840 PSD NB WH ELB3 | 871869697507799 |
| 910500460265 | 4MX883 491 LED66S/840 PSD WB WH ELB3 | 871869697508499 |
| 910500460266 | 4MX883 491 LED55S/840 PSD DA20 WHELBC-2R | 871869697537499 |
| 910500460267 | 4MX883 491 LED55S/840 PSD NB WH ELB3C-2R | 871869697538199 |
| 910500460268 | 4MX883 491 LED55S/840 PSD WB WH ELB3C-2R | 871869697539899 |
| 910500460269 | 4MX883 491 LED66S/840 PSD DA20 WHELBC-2R | 871869697540499 |
| 910500460270 | 4MX883 491 LED66S/840 PSD NB WH ELB3C-2R | 871869697541199 |
| 910500460271 | 4MX883 491 LED66S/840 PSD WB WH ELB3C-2R | 871869697542899 |
| 910500460273 | 4MX883 581 LED55S/840 PSD DA20 WH ELB3 | 871869697544299 |
| 910500460274 | 4MX883 581 LED55S/840 PSD NB WH ELB3 | 871869697545999 |

| 4MX850 Maxos LED Industry | | |
|---------------------------|--|-----------------|
| Material | Material description | Full EOC |
| 910500460275 | 4MX883 581 LED55S/840 PSD WB WH ELB3 | 871869697546699 |
| 910500460279 | 4MX883 581 LED66S/840 PSD DA20 WH ELB3 | 871869697550399 |
| 910500460280 | 4MX883 581 LED66S/840 PSD WB WH ELB3 | 871869697551099 |
| 910500460281 | 4MX883 581 LED55S/840 PSD DA20 WHELBC-2R | 871869697552799 |
| 910500460282 | 4MX883 581 LED55S/840 PSD NB WH ELB3C-2R | 871869697553499 |
| 910500460283 | 4MX883 581 LED55S/840 PSD WB WH ELB3C-2R | 871869697554199 |
| 910500460284 | 4MX883 581 LED66S/840 PSD DA20 WHELBC-2R | 871869697555899 |
| 910500460285 | 4MX883 581 LED66S/840 PSD NB WH ELB3C-2R | 871869697556599 |
| 910500460286 | 4MX883 491 LED80S/840 PSD NB WH ELB3 | 871869697593099 |
| 910500460291 | 4MX850 491 LED80S/830 PSD WB WH | 871869697650099 |
| 910500460292 | 4MX850 581 LED80S/840 PSD WB SI | 871869697652499 |
| 910500460390 | 4MX850 491 LED40S/840 PSD O WH | 871869697846799 |
| 910500460391 | 4MX850 491 LED55S/840 PSD WB WH C-2R | 871869697847499 |
| 910500460392 | 4MX850 581 LED40S/840 PSD NB WH C-2R | 871869697848199 |
| 910500460393 | 4MX850 581 LED55S/840 PSD NB WH C-2R | 871869697849899 |
| 910500460407 | 4MX850 491 LED40S/840 PSD VWB WH | 871869907544699 |
| 910500460408 | 4MX850 581 LED66S/840 PSD WB SI | 871869907553899 |
| 910500460409 | 4MX850 491 LED55S/830 PSD VWB WH | 871869907588099 |
| 910500460410 | 4MX850 491 LED66S/840 PSD WB SI | 871869907589799 |
| 910500460411 | 4MX850 581 LED55S/840 PSD VWB WH C-2R | 871869907590399 |
| 910500460414 | 4MX850 491 LED55S/840 PSD A20 WH C-2R | 871869907612299 |
| 910500460415 | 4MX850 491 LED66S/840 PSD VWB WH C-2R | 871869907613999 |
| 910500460419 | 4MX850 491 LED80S/830 PSD WB SI | 871869907650499 |
| 910500460420 | 4MX850 491 LED40S/840 PSD WB WH C-2R | 871869907651199 |
| 910500460430 | 4MX850 491 LED55S/830 PSD VWB SI | 871869907676499 |
| 910500460431 | 4MX850 491 LED66S/830 PSD A20 WH | 871869907680199 |
| 910500460433 | 4MX850 491 LED66S/830 PSD WB SI | 871869907694899 |
| 910500460434 | 4MX850 491 LED66S/840 PSD VWB WH | 871869907695599 |
| 910500460435 | 4MX850 491 LED80S/830 PSD A20 WH | 871869907696299 |

| 4MX850 Maxos LED Industry | | |
|---------------------------|---------------------------------------|-----------------|
| Material | Material description | Full EOC |
| 910500460438 | 4MX850 491 LED80S/840 PSD DA35 WH | 871869907722899 |
| 910500460441 | 4MX850 581 LED55S/840 PSD A20 WH | 871869907733499 |
| 910500460451 | 4MX850 491 LED80S/830 PSD A20 SI | 871869907776199 |
| 910500460452 | 4MX850 491 LED80S/830 PSD DA20 SI | 871869907777899 |
| 910500460453 | 4MX850 491 LED80S/830 PSD VWB WH | 871869907799099 |
| 910500460454 | 4MX850 491 LED80S/830 PSD VWB WH C-2R | 871869907800399 |
| 910500460456 | 4MX850 581 LED80S/830 PSD WB WH C-2R | 871869907815799 |
| 910500460457 | 4MX850 491 LED40S/840 PSD-CLO VWB WH | 871869907816499 |
| 910500460459 | 4MX850 581 LED66S/840 PSD VWB WH | 871869907834899 |
| 910500460467 | 4MX883 491 LED80S/830 PSD NB WH ELP3 | 871869907873799 |
| 910500460468 | 4MX883 491 LED80S/840 PSD NB WH ELP3 | 871869907874499 |
| 910500460474 | 4MX850 491 LED40S/840 PSD DA35 SI | 871869907946899 |
| 910500460476 | 4MX850 581 LED80S/830 PSD VWB WH | 871869907957499 |
| 910500460477 | 4MX850 581 LED80S/830 PSD WB WH | 871869907958199 |
| 910500460483 | 4MX850 581 LED80S/840 PSD A20 WH | 871869907972799 |
| 910500460487 | 4MX883 491 LED66S/840 PSD WB WH ELP3 | 871869907976599 |
| 910500460488 | 4MX883 581 LED66S/840 PSD WB WH ELP3 | 871869907977299 |
| 910500460491 | 4MX883 491 LED66S/840 PSD WB WH ELD3 | 871869907980299 |
| 910500460492 | 4MX883 581 LED66S/840 PSD WB WH ELD3 | 871869907981999 |
| 910500460502 | 4MX850 491 LED80S/840 PSD WB SI | 871869908008299 |
| 910500460505 | 4MX850 491 LED80S/840 PSD NB SI | 871869908024299 |
| 910500460510 | 4MX883 491 LED80S/840 PSD NB WH ELD3 | 871869908066299 |
| 910500460518 | 4MX850 581 LED66S/830 PSD WB SI | 871869908103499 |
| 910500460531 | 4MX850 491 LED40S/830 PSD WB WH C-2R | 871869908191199 |
| 910500460537 | 4MX850 491 LED40S/830 PSD WB WH C-2R | 871869908277299 |
| 910500460538 | 4MX850 491 LED55S/840 PSD NB WH C-2R | 871869908280299 |
| 910500460539 | 4MX850 491 LED80S/830 PSD WB WH C-2R | 871869908281999 |
| 910500460543 | 4MX883 491 LED80S/840 PSD WB WH ELB3 | 871869908308399 |
| 910500460547 | 4MX850 491 LED80S/830 PSD-CLO WB WH | 871869908331199 |

Ordering information

| 4MX850 Maxos LED Industry | | |
|---------------------------|---------------------------------------|-----------------|
| Material | Material description | Full EOC |
| 910500460548 | 4MX850 491 LED55S/840 PSD A20 SI C-2R | 871869908333599 |
| 910500460549 | 4MX850 491 LED55S/840 PSD NB SI C-2R | 871869908335999 |
| 910500460550 | 4MX850 491 LED55S/840 PSD WB SI C-2R | 871869908337399 |
| 910500460559 | 4MX850 491 LED80S/840 PSD-CLO VWB WH | 871869908411099 |
| 910500460560 | 4MX850 491 LED40S/840 PSD A20 WH C-2R | 871869908413499 |
| 910500460561 | 4MX850 491 LED66S/840 PSD A20 WH C-2R | 871869908415899 |
| 910500460562 | 4MX850 491 LED80S/840 PSD A20 WH C-2R | 871869908417299 |
| 910500460566 | 4MX850 581 LED55S/840 PSD VWB SI | 871869908439499 |
| 910500460582 | 4MX850 491 LED40S/830 PSD VWB WH C-2R | 871869922066299 |
| 910500460583 | 4MX850 491 LED55S/830 PSD A20 WH C-2R | 871869922074799 |
| 910500460584 | 4MX850 491 LED55S/830 PSD WB WH C-2R | 871869922076199 |
| 910500460589 | 4MX850 491 LED40S/830 PSD A20 WH C-2R | 871869922128799 |
| 910500460591 | 4MX850 491 LED66S/830 PSD NB SI | 871869922151599 |
| 910500460593 | 4MX850 491 LED40S/830 PSD DA35 WH | 871869922172099 |
| 910500460594 | 4MX850 491 LED40S/840 PSD DA35 WH | 871869922174499 |
| 910500460595 | 4MX850 581 LED55S/840 PSD WB WH C-2R | 871869922178299 |
| 910500460596 | 4MX850 581 LED66S/840 PSD VWB WH C-2R | 871869922180599 |
| 910500460598 | 4MX850 491 LED80S/830 PSD NB SI | 871869922236999 |
| 910500460601 | 4MX883 581 LED80S/840 PSD WB WH ELB3 | 871869922258199 |
| 910500460607 | 4MX850 491 LED66S/840 PSD-CLO A20 SI | 871869922313799 |
| 910500460608 | 4MX850 491 LED80S/840 PSD-CLO WB SI | 871869922315199 |
| 910500460617 | 4MX850 581 LED55S/830 PSD WB WH C-2R | 871869922437099 |
| 910500460618 | 4MX850 581 LED55S/830 PSD WB SI C-2R | 871869922439499 |
| 910500460619 | 4MX850 581 LED80S/830 PSD WB SI C-2R | 871869922441799 |
| 910500460620 | 4MX850 581 LED80S/840 PSD WB SI C-2R | 871869922443199 |
| 910500460626 | 4MX850 491 LED40S/830 PSD O WH | 871869922494399 |
| 910500460630 | 4MX850 581 LED66S/830 PSD VWB WH | 871869922532299 |
| 910500460632 | 4MX850 491 LED66S/830 PSD NB WH C-2R | 871869922547699 |
| 910500460634 | 4MX850 491 LED66S/830 PSD VWB SI | 871869922551399 |

| 4MX850 Maxos LED Industry | | |
|---------------------------|--|-----------------|
| Material | Material description | Full EOC |
| 910500460636 | 4MX850 491 LED55S/840 PSD VWB WH C-2R | 871869922555199 |
| 910500460637 | 4MX850 491 LED66S/840 PSD-VLC WB WH | 871869922602299 |
| 910500460642 | 4MX883 491 LED55S/840 PSD WB WH ELD3 | 871869922667199 |
| 910500460657 | 4MX850 491 LED66S/840 PSD O WH | 871869922884299 |
| 910500460665 | 4MX850 491 LED66S/830 PSD A20 SI | 871869951034399 |
| 910500460674 | 4MX850 491 LED80S/840 PSD-VLC WB SI | 871869951105099 |
| 910500460675 | 4MX850 491 LED66S/840 PSD-VLC A20 SI | 871869951107499 |
| 910500465380 | 4MX850 491 40S/840 PSD-VLC DA35-WB WH | 871869940219899 |
| 910500465381 | 4MX850 491 40S/840 PSD-VLC DAFRVWBFRWH | 871869940220499 |
| 910500465382 | 4MX850 541 32S/840 PSD-VLC 2WB/2DA35WH | 871869940221199 |
| 910500465383 | 4MX850 541 32S/840 PSD-VLC DAFRVWBFRWH | 871869940222899 |
| 910500465384 | 4MX850 491 32S/840 PSD-VLC DA35WBGA70W | 871869940223599 |
| 910500465385 | 4MX850 491 32S/840 PSD-VLC DAVWBFRGA70W | 871869940224299 |
| 910500465986 | 4MX850 581 LED55S/840 PSD-VLC WB WH C-2R | 871869996192399 |
| 910500465989 | 4MX850 491 LED40S/830 PSD VWB WH | 871869996197899 |
| 910505100379 | 4MX883 491 LED80S/830 PSD WB WH ELB3 | 871869996567999 |
| 910505103025 | 4MX883 491 LED66S/840 PSD VWB SI ELP3 | 871951496801199 |
| 910505103026 | 4MX850 491 LED80S/850 PSD WB SI | 871951496805999 |
| 910505103027 | 4MX883 581 LED66S/840 PSD NB WH ELP3 | 871951496807399 |
| 910505103045 | 4MX883 491 LED80S/840 PSD WB WH ELD3 | 871951496849399 |
| 910505103087 | 4MX850 491 LED40S/840 SIA WB WH C-2R | 871951496900199 |
| 910505103088 | 4MX850 491 LED66S/840 SIA NB WH C-2R | 871951496901899 |
| 910505103089 | 4MX850 491 LED66S/840 SIA WB WH C-2R | 871951496902599 |
| 910505103090 | 4MX850 491 LED80S/840 SIA NB WH C-2R | 871951496903299 |
| 910505103091 | 4MX850 491 LED80S/840 SIA WB WH C-2R | 871951496904999 |
| 910505103093 | 4MX883 491 LED55S/840 PSD WB SI ELP3 | 871951496906399 |
| 910505103427 | 4MX883 581 LED55S/840 PSD WB WH ELP3 | 872016910209599 |
| 910505103428 | 4MX850 581 LED80S/840 SIA WB WH C-2R | 872016910212599 |
| 910505103516 | 4MX850 491 LED55S/830 PSD DA35 SI | 872016910610999 |

| 4MX850 Maxos LED Industry | | |
|---------------------------|--|-----------------|
| Material | Material description | Full EOC |
| 910505103578 | 4MX883 491 LED80S/840 PSD WB WH ELP3 | 872016910880699 |
| 910505103669 | 4MX850 581 LED40S/840 PSD VWB WH | 872016961509099 |
| 910505103823 | 4MX883 581 LED80S/840 PSD NB WH ELP3 C-2 | 872016962216699 |
| 910505103833 | 4MX850 491 LED80S/840 PSD-CLO DA20 SI | 872016962225899 |
| 910505103991 | 4MX883 581 LED66S/840 PSD WB WH ELP3 C-2 | 872016962214299 |
| 910629120026 | 4MX850 491 LED55S/830 PSD NB WH | 403073266117699 |
| 910629120126 | 4MX850 491 LED55S/840 PSD NB WH | 403073266118399 |
| 910629120226 | 4MX850 491 LED55S/830 PSD WB WH | 403073266119099 |
| 910629120326 | 4MX850 491 LED55S/840 PSD WB WH | 403073266120699 |
| 910629120426 | 4MX850 581 LED55S/830 PSD NB WH | 403073266121399 |
| 910629120526 | 4MX850 581 LED55S/840 PSD NB WH | 403073266122099 |
| 910629120626 | 4MX850 581 LED55S/830 PSD WB WH | 403073266123799 |
| 910629120726 | 4MX850 581 LED55S/840 PSD WB WH | 403073266124499 |
| 910629120826 | 4MX850 491 LED55S/830 PSD NB SI | 403073266125199 |
| 910629120926 | 4MX850 491 LED55S/840 PSD NB SI | 403073266126899 |
| 910629121026 | 4MX850 491 LED55S/830 PSD WB SI | 403073266127599 |
| 910629121126 | 4MX850 491 LED55S/840 PSD WB SI | 403073266128299 |
| 910629121226 | 4MX850 581 LED55S/830 PSD NB SI | 403073266129999 |
| 910629121326 | 4MX850 581 LED55S/840 PSD NB SI | 403073266130599 |
| 910629121426 | 4MX850 581 LED55S/830 PSD WB SI | 403073266131299 |
| 910629121526 | 4MX850 581 LED55S/840 PSD WB SI | 403073266132999 |
| 910629121626 | 4MX850 491 LED40S/830 PSD NB WH | 403073266165799 |
| 910629121726 | 4MX850 491 LED40S/840 PSD NB WH | 403073266166499 |
| 910629121826 | 4MX850 491 LED40S/830 PSD WB WH | 403073266167199 |
| 910629121926 | 4MX850 491 LED40S/840 PSD WB WH | 403073266168899 |
| 910629122026 | 4MX850 581 LED40S/830 PSD NB WH | 403073266169599 |
| 910629122126 | 4MX850 581 LED40S/840 PSD NB WH | 403073266170199 |
| 910629122226 | 4MX850 581 LED40S/830 PSD WB WH | 403073266179499 |
| 910629122326 | 4MX850 581 LED40S/840 PSD WB WH | 403073266171899 |

| 4MX850 Maxos LED Industry | | |
|---------------------------|-----------------------------------|-----------------|
| Material | Material description | Full EOC |
| 910629122426 | 4MX850 491 LED40S/830 PSD NB SI | 403073266172599 |
| 910629122526 | 4MX850 491 LED40S/840 PSD NB SI | 403073266173299 |
| 910629122626 | 4MX850 491 LED40S/830 PSD WB SI | 403073266174999 |
| 910629122726 | 4MX850 491 LED40S/840 PSD WB SI | 403073266175699 |
| 910629122826 | 4MX850 581 LED40S/830 PSD NB SI | 403073266176399 |
| 910629122926 | 4MX850 581 LED40S/840 PSD NB SI | 403073266177099 |
| 910629123026 | 4MX850 581 LED40S/830 PSD WB SI | 403073266180099 |
| 910629123126 | 4MX850 581 LED40S/840 PSD WB SI | 403073266178799 |
| 910629124826 | 4MX850 491 LED55S/830 PSD DA20 WH | 403073266261699 |
| 910629124926 | 4MX850 491 LED55S/840 PSD DA20 WH | 403073266262399 |
| 910629125026 | 4MX850 581 LED55S/830 PSD DA20 WH | 403073266263099 |
| 910629125126 | 4MX850 581 LED55S/840 PSD DA20 WH | 403073266264799 |
| 910629125226 | 4MX850 491 LED55S/830 PSD DA20 SI | 403073266265499 |
| 910629125326 | 4MX850 491 LED55S/840 PSD DA20 SI | 403073266266199 |
| 910629125426 | 4MX850 581 LED55S/830 PSD DA20 SI | 403073266267899 |
| 910629125526 | 4MX850 581 LED55S/840 PSD DA20 SI | 403073266268599 |
| 910629125626 | 4MX850 491 LED40S/830 PSD DA20 WH | 403073266269299 |
| 910629125726 | 4MX850 491 LED40S/840 PSD DA20 WH | 403073266270899 |
| 910629125826 | 4MX850 581 LED40S/830 PSD DA20 WH | 403073266271599 |
| 910629125926 | 4MX850 581 LED40S/840 PSD DA20 WH | 403073266272299 |
| 910629126026 | 4MX850 491 LED40S/830 PSD DA20 SI | 403073266273999 |
| 910629126126 | 4MX850 491 LED40S/840 PSD DA20 SI | 403073266274699 |
| 910629126226 | 4MX850 581 LED40S/830 PSD DA20 SI | 403073266275399 |
| 910629126326 | 4MX850 581 LED40S/840 PSD DA20 SI | 403073266276099 |
| 910629158026 | 4MX850 491 LED66S/840 PSD DA20 WH | 403073266601099 |
| 910629158126 | 4MX850 491 LED66S/840 PSD WB WH | 403073266602799 |
| 910629158226 | 4MX850 491 LED66S/840 PSD NB WH | 403073266603499 |
| 910629160026 | 4MX850 491 LED66S/830 PSD DA20 WH | 403073266692899 |
| 910629160126 | 4MX850 491 LED66S/830 PSD WB WH | 403073266693599 |

Ordering information

| 4MX850 Maxos LED Industry | | |
|---------------------------|--|-----------------|
| Material | Material description | Full EOC |
| 910629160226 | 4MX850 491 LED66S/830 PSD NB WH | 403073266694299 |
| 910629160326 | 4MX850 581 LED66S/840 PSD WB WH | 403073266695999 |
| 910629160426 | 4MX850 581 LED66S/840 PSD NB WH | 403073266696699 |
| 910629160526 | 4MX850 491 LED40S/840 PSD A20 WH | 403073266744499 |
| 910629160626 | 4MX850 491 LED55S/840 PSD A20 WH | 403073266745199 |
| 910629160726 | 4MX850 491 LED55S/830 PSD A20 WH | 403073266756799 |
| 910629160826 | 4MX850 491 LED55S/830 PSD A20 SI | 403073266757499 |
| 910629160926 | 4MX850 491 LED55S/840 PSD A20 SI | 403073266758199 |
| 910629161026 | 4MX850 491 LED40S/830 PSD A20 WH | 403073266759899 |
| 910629161126 | 4MX850 491 LED40S/830 PSD A20 SI | 403073266760499 |
| 910629161226 | 4MX850 491 LED40S/840 PSD A20 SI | 403073266761199 |
| 910629162126 | 4MX850 491 LED66S/840 PSD A20 WH | 403073266770399 |
| 910629162226 | 4MX850 491 LED66S/840 PSD A20 SI | 403073266771099 |
| 910629163026 | 4MX850 491 LED66S/840 PSD NB SI | 403073266878699 |
| 910629165226 | 4MX883 581 LED66S/840 PSD WB WH ELB3C-2R | 403073267384199 |
| 910629165626 | 4MX850 491 LED55S/840 PSD DA35 SI | 403073267176299 |
| 910629165726 | 4MX850 581 LED55S/840 PSD DA35 SI | 403073267177999 |
| 910629165926 | 4MX850 491 LED55S/840 PSD DA35 WH | 403073267179399 |
| 910629166026 | 4MX850 491 LED66S/840 PSD DA35 WH | 403073267180999 |
| 910629166126 | 4MX850 581 LED55S/840 PSD DA35 WH | 403073267181699 |
| 910629167426 | 4MX850 491 LED80S/840 PSD NB WH | 403073267281399 |
| 910629167526 | 4MX850 491 LED80S/840 PSD WB WH | 403073267282099 |
| 910629167926 | 4MX883 581 LED66S/830 PSD WB WH ELB3C-2R | 403073267298199 |
| 910629168326 | 4MX850 581 LED66S/830 PSD WB WH C-2R | 403073267302599 |
| 910771118809 | 4MX850 581 LED66S/840 PSD-VLC DA20 WH | 871869939290199 |
| 910771118810 | 4MX850 581 LED55S/840 PSD-VLC WB WH | 871869939291899 |
| 910771118811 | 4MX850 581 LED55S/840 PSD-VLC DA20 WH | 871869939292599 |
| 910771118812 | 4MX850 581 LED66S/840 PSD-VLC WB WH | 871869939293299 |
| 910771118934 | 4MX850 491 LED80S/830 PSD VWB SI | 871869939462299 |

| 4MX850 Maxos LED Industry | | |
|---------------------------|--|-----------------|
| Material | Material description | Full EOC |
| 910771119289 | 4MX850 491 LED55S/840 PSD-VLC WB SI | 871869939951199 |
| 910771124644 | 4MX850 491 LED80S/830 PSD-VLC VWB SI | 871869940415499 |
| 910771124645 | 4MX883 491 LED80S/830 PSD-VLC VWB ELB3SI | 871869940416199 |
| 910771124658 | 4MX850 581 LED40S/840 PSD O WH | 871869940433899 |
| 910771124666 | 4MX850 491 LED80S/830 PSD-VLC VWB WH | 871869940445199 |
| 910771124667 | 4MX883 491 LED80S/830 PSD-VLC VWB WHEL3 | 871869940446899 |
| 910771124668 | 4MX850 491 LED66S/865 PSD NB WH | 871869940449999 |
| 910771124669 | 4MX850 491 LED80S/865 PSD WB WH | 871869940450599 |
| 910771124670 | 4MX850 491 LED80S/865 PSD NB WH | 871869940451299 |
| 910771124671 | 4MX850 491 LED66S/865 PSD WB WH | 871869940452999 |
| 910771124672 | 4MX850 581 LED66S/865 PSD WB WH | 871869940453699 |
| 910771124673 | 4MX850 491 LED40S/850 PSD WB WH | 871869940454399 |
| 910771124674 | 4MX850 581 LED66S/850 PSD WB WH | 871869940455099 |
| 910771124675 | 4MX850 491 LED66S/850 PSD WB WH | 871869940456799 |
| 910771124676 | 4MX850 491 LED80S/850 PSD WB WH | 871869940457499 |
| 910771124677 | 4MX850 491 LED80S/850 PSD NB WH | 871869940458199 |
| 910771125064 | 4MX850 491 LED66S/840 PSD VWB SI | 871869941144299 |
| 910771125472 | 4MX850 491 LED80S/830 PSD-VLC DA20 WH | 871869999194499 |
| 910771125853 | 4MX850 491 LED55S/830 PSD-VLC WB WH | 871869999576899 |
| 910771126013 | 4MX850 491 LED80S/840 PSD-VLC WB WH | 871869999740399 |
| 910771126015 | 4MX850 491 LED80S/840 PSD-VLC NB WH | 871869999742799 |
| 910771126016 | 4MX850 491 LED66S/840 PSD-VLC NB WH | 871869999743499 |
| 910771126088 | 4MX850 491 LED80S/830 PSD-VLC DA20 SI | 871869999824099 |
| 910771126722 | 4MX850 491 LED66S/840 PSD-VLC DA35 WH | 871951400519899 |
| 910771126987 | 4MX850 491 LED80S/840 PSD DA20 SI | 871951400822999 |
| 910771128385 | 4MX850 491 LED66S/840 PSD-VLC NB WH C-2R | 871016362795399 |
| 910771128834 | 4MX850 491 LED80S/865 PSD NB WH C-2R | 871016363304699 |
| 910771128835 | 4MX883 491 LED80S/830 PSD-VLC NB WHELP3 | 871016363306099 |
| 910771128836 | 4MX850 491 LED80S/840 PSD A20 WH C-2R | 871016363308499 |

| 4MX850 Maxos LED Industry | | |
|---------------------------|--|-----------------|
| Material | Material description | Full EOC |
| 910771128837 | 4MX850 491 LED80S/830 PSD A20 WH C-2R | 871016363310799 |
| 910771128838 | 4MX883 491 LED80S/830 PSD O WH ELD3 | 871016363312199 |
| 910771128901 | 4MX850 491 LED55S/830 PSD O WH | 871016363376399 |
| 910771142440 | 4MX883 491 LED80S/840 PSD NB WH ELP3C-2R | 871016363926099 |
| 910771142650 | 4MX883 491 LED55S/840 PSD WB WH ELD3 C-2 | 871016364138699 |
| 910771142651 | 4MX883 491 LED55S/840 PSD NB WH ELD3 C-2 | 871016364140999 |
| 910771142652 | 4MX883 491 LED66S/840 PSD NB WH ELD3 C-2 | 871016364142399 |
| 910771142776 | 4MX883 491 LED80S/830 PSD VWB WHEL3C-2R | 871016364267399 |
| 910771142782 | 4MX883 491 LED55S/830 PSD VWB ELB3 WH | 871016364275899 |
| 910771142790 | 4MX883 491 LED55S/830 PSD VWB ELB3 SI | 871016364285799 |
| 910771142792 | 4MX850 581 LED40S/850 PSD WB WH | 871016364289599 |
| 910771142809 | 4MX883 491 LED55S/830 PSD VWB WH ELP3 | 871016364307699 |

| 4MX400 Maxos LED Insert for TTX400 | | |
|------------------------------------|--|-----------------|
| Material | Material description | Full EOC |
| 910500460028 | 4MX400 491 LED66S/840 PSD-CLO WB WH | 871869688213999 |
| 910500460045 | 4MX400 581 LED80S/840 PSD VWB WH | 871869688243699 |
| 910500460047 | 4MX400 581 LED55S/840 PSD VWB WH C-2R | 871869688247499 |
| 910500460061 | 4MX433 491 LED55S/840 PSD NB WH ELB3 | 871869688502499 |
| 910500460065 | 4MX400 581 LED80S/840 PSD A20 WH | 871869688577299 |
| 910500460078 | 4MX400 581 LED80S/840 PSD VWB WH C-2R | 871869691364299 |
| 910500460099 | 4MX400 491 LED80S/840 PSD DA20 WH | 871869697005899 |
| 910500460101 | 4MX400 491 LED66S/840 PSD DA20 WH C-2R | 871869697006599 |
| 910500460102 | 4MX400 491 LED66S/840 PSD NB WH C-2R | 871869697007299 |
| 910500460103 | 4MX400 491 LED66S/840 PSD WB WH C-2R | 871869697008999 |
| 910500460104 | 4MX400 491 LED80S/840 PSD DA20 WH C-2R | 871869697009699 |
| 910500460105 | 4MX400 491 LED80S/840 PSD NB WH C-2R | 871869697010299 |
| 910500460106 | 4MX400 491 LED80S/840 PSD WB WH C-2R | 871869697011999 |
| 910500460107 | 4MX400 581 LED80S/840 PSD DA20 WH | 871869697012699 |

| 4MX400 Maxos LED Insert for TTX400 | | |
|------------------------------------|--|-----------------|
| Material | Material description | Full EOC |
| 910500460108 | 4MX400 581 LED66S/840 PSD DA20 WH C-2R | 871869697013399 |
| 910500460109 | 4MX400 581 LED66S/840 PSD NB WH C-2R | 871869697014099 |
| 910500460110 | 4MX400 581 LED80S/840 PSD DA20 WH C-2R | 871869697015799 |
| 910500460111 | 4MX400 581 LED80S/840 PSD NB WH C-2R | 871869697016499 |
| 910500460112 | 4MX400 581 LED80S/840 PSD WB WH C-2R | 871869697017199 |
| 910500460113 | 4MX400 491 LED66S/840 PSD-CLO DA20 WH | 871869697018899 |
| 910500460114 | 4MX400 491 LED80S/840 PSD-CLO DA20 WH | 871869697019599 |
| 910500460115 | 4MX400 581 LED66S/840 PSD-CLO DA20 WH | 871869697020199 |
| 910500460116 | 4MX400 581 LED80S/840 PSD-CLO DA20 WH | 871869697021899 |
| 910500460154 | 4MX433 491 LED55S/840 PSD DA20 WH ELB3 | 871869697059199 |
| 910500460155 | 4MX433 491 LED55S/840 PSD WB WH ELB3 | 871869697060799 |
| 910500460159 | 4MX433 491 LED66S/840 PSD DA20 WH ELB3 | 871869697064599 |
| 910500460160 | 4MX433 491 LED66S/840 PSD NB WH ELB3 | 871869697065299 |
| 910500460161 | 4MX433 491 LED66S/840 PSD WB WH ELB3 | 871869697066999 |
| 910500460162 | 4MX433 491 LED55S/840 PSD DA20WHEL3C-2R | 871869697067699 |
| 910500460163 | 4MX433 491 LED55S/840 PSD NB WH ELB3C-2R | 871869697068399 |
| 910500460164 | 4MX433 491 LED55S/840 PSD WB WH ELB3C-2R | 871869697069099 |
| 910500460165 | 4MX433 491 LED66S/840 PSD DA20WHEL3C-2R | 871869697070699 |
| 910500460166 | 4MX433 491 LED66S/840 PSD NB WH ELB3C-2R | 871869697071399 |
| 910500460167 | 4MX433 491 LED66S/840 PSD WB WH ELB3C-2R | 871869697072099 |
| 910500460171 | 4MX433 581 LED55S/840 PSD DA20 WH ELB3 | 871869697076899 |
| 910500460172 | 4MX433 581 LED55S/840 PSD NB WH ELB3 | 871869697077599 |
| 910500460173 | 4MX433 581 LED55S/840 PSD WB WH ELB3 | 871869697078299 |
| 910500460177 | 4MX433 581 LED66S/840 PSD DA20 WH ELB3 | 871869697082999 |
| 910500460178 | 4MX433 581 LED66S/840 PSD NB ELB3 WH | 871869697083699 |
| 910500460179 | 4MX433 581 LED66S/840 PSD WB WH ELB3 | 871869697084399 |
| 910500460180 | 4MX433 581 LED55S/840 PSD DA20WHEL3C-2R | 871869697085099 |
| 910500460181 | 4MX433 581 LED55S/840 PSD NB WH ELB3C-2R | 871869697086799 |
| 910500460182 | 4MX433 581 LED55S/840 PSD WB WH ELB3C-2R | 871869697087499 |

Ordering information

| 4MX400 Maxos LED Insert for TTX400 | | |
|------------------------------------|--|-----------------|
| Material | Material description | Full EOC |
| 910500460183 | 4MX433 581 LED66S/840 PSD DA20WHEL3C-2R | 871869697088199 |
| 910500460184 | 4MX433 581 LED66S/840 PSD NB WH ELB3C-2R | 871869697089899 |
| 910500460185 | 4MX433 581 LED66S/840 PSD WB WH ELB3C-2R | 871869697090499 |
| 910500460191 | 4MX400 491 LED55S/830 PSD VWB WH | 871869697346299 |
| 910500460192 | 4MX400 491 LED66S/830 PSD VWB WH C-2R | 871869697347999 |
| 910500460405 | 4MX400 491 LED80S/840 PSD A20 WH | 871869907513299 |
| 910500460423 | 4MX400 491 LED55S/830 PSD VWB WH C-2R | 871869907662799 |
| 910500460424 | 4MX400 491 LED66S/830 PSD NB WH C-2R | 871869907663499 |
| 910500460425 | 4MX400 491 LED66S/830 PSD WB WH C-2R | 871869907664199 |
| 910500460439 | 4MX400 581 LED80S/830 PSD WB WH | 871869907726699 |
| 910500460446 | 4MX400 581 LED55S/840 PSD NB WH C-2R | 871869907747199 |
| 910500460447 | 4MX400 581 LED55S/840 PSD WB WH C-2R | 871869907748899 |
| 910500460450 | 4MX400 581 LED66S/840 PSD VWB WH | 871869907774799 |
| 910500460478 | 4MX400 491 LED66S/830 PSD DA20 WH C-2R | 871869907961199 |
| 910500460480 | 4MX400 491 LED40S/840 PSD VWB WH | 871869907966699 |
| 910500460481 | 4MX400 491 LED55S/830 PSD WB WH C-2R | 871869907967399 |
| 910500460495 | 4MX433 491 LED66S/840 PSD WB WH ELP3 | 871869907994999 |
| 910500460496 | 4MX433 581 LED66S/840 PSD WB WH ELP3 | 871869907995699 |
| 910500460499 | 4MX433 491 LED66S/840 PSD WB WH ELD3 | 871869907998799 |
| 910500460501 | 4MX433 581 LED66S/840 PSD WB WH ELD3 | 871869907999499 |
| 910500460508 | 4MX400 491 LED40S/830 PSD WB WH C-2R | 871869908054999 |
| 910500460509 | 4MX400 491 LED66S/830 PSD WB WH | 871869908064899 |
| 910500460511 | 4MX400 491 LED80S/830 PSD A20 WH | 871869908071699 |
| 910500460512 | 4MX400 491 LED80S/830 PSD DA20 WH | 871869908073099 |
| 910500460541 | 4MX400 581 LED55S/840 PSD VWB WH | 871869908285799 |
| 910500460544 | 4MX400 491 LED80S/840 PSD A20 WH C-2R | 871869908311399 |
| 910500460579 | 4MX400 491 LED55S/840 PSD VWB WH | 871869922060099 |
| 910500460587 | 4MX400 491 LED40S/840 PSD-CLO NB WH C-2R | 871869922098399 |
| 910500460604 | 4MX433 491 LED80S/830 PSD NB WH ELD3 | 871869922281999 |

| 4MX400 Maxos LED Insert for TTX400 | | |
|------------------------------------|--|-----------------|
| Material | Material description | Full EOC |
| 910500460660 | 4MX400 581 LED40S/840 PSD WB WH C-2R | 871869922970299 |
| 910500460662 | 4MX400 491 LED66S/840 PSD-VLC WB WH | 871869922996299 |
| 910500460667 | 4MX433 581 LED80S/840 PSD WB WH ELB3 | 871869951043599 |
| 910500460677 | 4MX400 491 LED66S/830 PSD A20 WH | 871869951141899 |
| 910500460680 | 4MX433 491 LED80S/830 PSD-VLC WB WH ELP3 | 871869951202699 |
| 910500460693 | 4MX400 491 LED40S/840 PSD WB WH C-2R | 871869951501099 |
| 910500460694 | 4MX400 491 LED55S/840 PSD WB WH C-2R | 871869951502799 |
| 910500465679 | 4MX400 581 LED80S/830 PSD WB WH C-2R | 871869941130599 |
| 910505103503 | 4MX433 581 LED80S/840 PSD WB WH ELP3 C-2 | 872016910589899 |
| 910505103651 | 4MX400 581 LED40S/840 PSD VWB WH | 872016961510699 |
| 910629123226 | 4MX400 491 LED40S/830 PSD NB WH | 403073266241899 |
| 910629123326 | 4MX400 491 LED40S/830 PSD WB WH | 403073266242599 |
| 910629123426 | 4MX400 491 LED40S/840 PSD NB WH | 403073266243299 |
| 910629123526 | 4MX400 491 LED40S/840 PSD WB WH | 403073266244999 |
| 910629123626 | 4MX400 491 LED55S/830 PSD NB WH | 403073266245699 |
| 910629123726 | 4MX400 491 LED55S/830 PSD WB WH | 403073266246399 |
| 910629123826 | 4MX400 491 LED55S/840 PSD NB WH | 403073266247099 |
| 910629123926 | 4MX400 491 LED55S/840 PSD WB WH | 403073266248799 |
| 910629124026 | 4MX400 581 LED40S/830 PSD NB WH | 403073266249499 |
| 910629124126 | 4MX400 581 LED40S/830 PSD WB WH | 403073266250099 |
| 910629124226 | 4MX400 581 LED40S/840 PSD NB WH | 403073266251799 |
| 910629124326 | 4MX400 581 LED40S/840 PSD WB WH | 403073266252499 |
| 910629124426 | 4MX400 581 LED55S/830 PSD NB WH | 403073266253199 |
| 910629124526 | 4MX400 581 LED55S/830 PSD WB WH | 403073266254899 |
| 910629124626 | 4MX400 581 LED55S/840 PSD NB WH | 403073266255599 |
| 910629124726 | 4MX400 581 LED55S/840 PSD WB WH | 403073266256299 |
| 910629128226 | 4MX400 491 LED40S/830 PSD DA20 WH | 403073266317099 |
| 910629128326 | 4MX400 491 LED40S/840 PSD DA20 WH | 403073266318799 |
| 910629128426 | 4MX400 491 LED55S/830 PSD DA20 WH | 403073266319499 |

| 4MX400 Maxos LED Insert for TTX400 | | |
|------------------------------------|--------------------------------------|-----------------|
| Material | Material description | Full EOC |
| 910629128526 | 4MX400 491 LED55S/840 PSD DA20 WH | 403073266320099 |
| 910629128626 | 4MX400 581 LED40S/830 PSD DA20 WH | 403073266321799 |
| 910629128726 | 4MX400 581 LED40S/840 PSD DA20 WH | 403073266322499 |
| 910629128826 | 4MX400 581 LED55S/830 PSD DA20 WH | 403073266323199 |
| 910629128926 | 4MX400 581 LED55S/840 PSD DA20 WH | 403073266324899 |
| 910629158726 | 4MX400 581 LED66S/840 PSD DA20 WH | 403073266660799 |
| 910629158826 | 4MX400 581 LED66S/840 PSD WB WH | 403073266661499 |
| 910629158926 | 4MX400 581 LED66S/840 PSD NB WH | 403073266662199 |
| 910629162326 | 4MX400 491 LED40S/830 PSD A20 WH | 403073266772799 |
| 910629162426 | 4MX400 491 LED40S/840 PSD A20 WH | 403073266773499 |
| 910629162526 | 4MX400 491 LED55S/830 PSD A20 WH | 403073266774199 |
| 910629162626 | 4MX400 491 LED55S/840 PSD A20 WH | 403073266775899 |
| 910629162726 | 4MX400 491 LED66S/840 PSD NB WH | 403073266833599 |
| 910629162826 | 4MX400 491 LED66S/840 PSD WB WH | 403073266834299 |
| 910629162926 | 4MX400 491 LED66S/840 PSD DA20 WH | 403073266835999 |
| 910629163126 | 4MX400 581 LED55S/840 PSD A20 WH | 403073266903599 |
| 910629165526 | 4MX400 581 LED66S/840 PSD WB WH C-2R | 403073267387299 |
| 910629166826 | 4MX400 581 LED80S/840 PSD NB WH | 403073267275299 |
| 910629167026 | 4MX400 491 LED80S/830 PSD WB WH | 403073267277699 |
| 910629167126 | 4MX400 491 LED80S/840 PSD WB WH | 403073267278399 |
| 910629167326 | 4MX400 581 LED80S/840 PSD WB WH | 403073267280699 |
| 910629168426 | 4MX400 581 LED66S/830 PSD WB WH C-2R | 403073267303299 |
| 910629169626 | 4MX400 491 LED66S/840 PSD A20 WH | 403073267363699 |
| 910771126089 | 4MX400 581 LED40S/840 PSD NB WH C-2R | 871869999826499 |
| 910771126669 | 4MX400 491 LED66S/840 PSD DA35 WH | 871951400463499 |
| 910771126670 | 4MX400 491 LED66S/840 PSD VWB WH | 871951400465899 |
| 910771126670 | 4MX400 491 LED66S/840 PSD VWB WH | 871951400465899 |
| 910771126671 | 4MX400 491 LED66S/840 PSD O WH | 871951400467299 |
| 910771126976 | 4MX400 581 LED66S/830 PSD WB WH | 871951400809099 |

| 4MX400 Maxos LED Insert for TTX400 | | |
|------------------------------------|--|-----------------|
| Material | Material description | Full EOC |
| 910771127101 | 4MX400 491 LED80S/830 PSD WB WH C-2R | 871951400935699 |
| 910771127995 | 4MX400 491 LED80S/840 PSD NB WH | 871951401925699 |
| 910771128306 | 4MX400 491 LED80S/840 PSD-VLC NB WH C2R | 871016362715199 |
| 910771128656 | 4MX433 491 LED80S/840 PSD WB WH ELP3C-2R | 871016363088599 |
| 910771142828 | 4MX433 491 LED55S/830 PSD VWB WH ELP3 | 871016364328199 |

Maxos universal

| Material | Material description | Full EOC |
|--------------|--|-----------------|
| 910925869509 | LL515S 46S_57S/840 WB PSU UNIV TW3 WH | 872016944055599 |
| 910925869510 | LL515S 46S_57S/830 WB PSU UNIV TW3 WH | 872016944056299 |
| 910925869511 | LL515S 42S/840 PSD WB UNIV TW3 WH | 872016944057999 |
| 910925869512 | LL515S 42S/830 PSD WB UNIV TW3 WH | 872016944058699 |
| 910925869513 | LL515S 80S/840 PSD WB UNIV TW3 WH | 872016944059399 |
| 910925869514 | LL515S 80S/830 PSD WB UNIV TW3 WH | 872016944060999 |
| 910925869515 | LL515S 46S_57S/840 PCO PSU UNIV TW3 WH | 872016944061699 |
| 910925869516 | LL515S 46S_57S/830 PCO PSU UNIV TW3 WH | 872016944062399 |
| 910925869517 | LL515S 42S/840 PSD PCO UNIV TW3 WH | 872016944063099 |
| 910925869518 | LL515S 42S/830 PSD PCO UNIV TW3 WH | 872016944064799 |
| 910925869519 | LL515S 80S/840 PSD PCO UNIV TW3 WH | 872016944065499 |
| 910925869520 | LL515S 80S/830 PSD PCO UNIV TW3 WH | 872016944066199 |

Maxos universal accessories

| Material | Material description | Full EOC |
|--------------|-----------------------------|-----------------|
| 910925869523 | LL515Z WIRING 7x1.5 UNIV WH | 872016944068599 |
| 910925869521 | LL515Z BC UNIV WH | 871951477310300 |
| 910925869522 | LL515Z WIRING 5x1.5 UNIV WH | 872016944067899 |
| 910925869524 | LL515Z CU UNIV WH (5PCS) | 871951477313499 |



© 2023 Signify Holding. All rights reserved. The information provided herein is subject to change, without notice. Signify does not give any representation or warranty as to the accuracy or completeness of the information included herein and shall not be liable for any action in reliance thereon. The information presented in this document is not intended as any commercial offer and does not form part of any quotation or contract, unless otherwise agreed by Signify.

Philips and the Philips Shield Emblem are registered trademarks of Koninklijke Philips N.V. All other trademarks are owned by Signify Holding or their respective owners.

www.lighting.philips.com