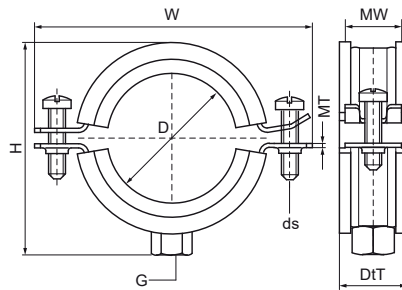


## Walraven BISMAT® 2000 (M10) 2-screw

(A0525)

for steel, copper, cast iron and plastic (multilayer) pipe



### Features & benefits

- two-screw clamp
- with Walraven BISMAT® quick locking system
- material: steel
- zinc plated
- sound insulating lining according DIN 4109
- noise reduction according to ISO 3822-1 up to 23 dB(A)
- tested for fire safety



Product Number	Outside Pipe Diameter	DN	Pipe Diameter Imperial	Connection Thread	Total Height	Total Width	Total Depth	Material Width	Material Thickness	Screw Size	Maximum Allowed Load Faz	Approvals
Reference Letter	D	D	D	G	H	W	DtT	MW	MT	ds	F <sub>0,z</sub>	
Unit description	mm		"		mm	mm	mm	mm	mm		N	
3423168	159 - 168	DN 150	6	M10	196	231	31	25	3.00	M8	1,220	ITB (KOT), CE, ETA, EPD
3423210	200 - 210	-	-	M10	236	272	31	25	3.00	M8	1,220	ITB (KOT), CE, ETA, EPD
3423219	210 - 219	DN 200	8	M10	247	284	31	25	3.00	M8	1,220	ITB (KOT), CE, ETA, EPD