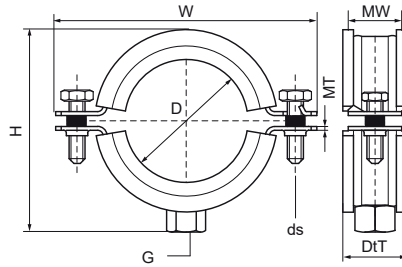


Walraven BISMAT® SL (M10) Guidance Clamp

(A3020)

for stand pipes



Features & benefits

- two-screw clamp
- with quick locking system
- the inside diameter of the clamp is designed for noise isolating plastic pipes (e.g. Friaphon®, As®, Raupiano®) and cast iron drain pipes
- suitable for plastic pipe
- spacer washers between the flanges guarantee a limited grip to protect the rubber from crushing
- material: steel
- zinc plated
- sound insulating lining according to DIN 4109

EPD

| Product Number | VVS Number | Outside Pipe Diameter | DN | Connection Thread | Total Height | Total Width | Total Depth | Material Width | Material Thickness | Screw Size | Approvals |
|------------------|------------|-----------------------|--------|-------------------|--------------|-------------|-------------|----------------|--------------------|------------|-----------|
| Reference Letter | | D | D | G | H | W | DtT | MW | MT | ds | |
| Unit description | | mm | | | mm | mm | mm | mm | mm | | |
| 3408050 | | 50 | DN 40 | M10 | 96 | 124 | 44 | 25 | 2.50 | M8 | EPD |
| 3408070 | 18007678 | 78 | DN 70 | M10 | 117 | 154 | 44 | 25 | 2.50 | M8 | EPD |
| 3408075 | 18007675 | 75 | DN 70 | M10 | 112 | 149 | 44 | 25 | 2.50 | M8 | EPD |
| 3408090 | | 90 | DN 80 | M10 | 143 | 164 | 44 | 25 | 2.50 | M8 | EPD |
| 3408100 | 18007810 | 110 | DN 100 | M10 | 147 | 184 | 44 | 25 | 2.50 | M8 | EPD |
| 3408125 | 18007825 | 125 | DN 125 | M10 | 161 | 199 | 44 | 25 | 2.50 | M8 | EPD |
| 3408137 | 18007835 | 135 | DN 125 | M10 | 173 | 211 | 44 | 25 | 2.50 | M8 | EPD |
| 3408150 | 18007860 | 160 | DN 150 | M10 | 196 | 234 | 44 | 25 | 2.50 | M8 | EPD |