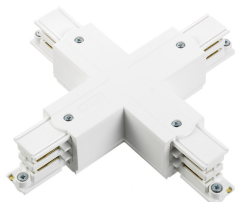


Global Trac Electrical Accessories

GLOBAL TRAC PRO X FEED WHITE

XTS38-3



Product features

- Global Trac Pro accessory - white, glass fibre reinforced polycarbonate X-feed that is applicable for three-circuit track systems. Dimensions - 166 x 166 x 33 mm (L x W x H).



PRODUCT OVERVIEW

Product name	GLOBAL TRAC PRO X FEED WHITE
Technology	Accessory
Housing	PC Polycarbonate
General application	Retail
ETIM Class	EC002556
E-number SE	7402236
Warranty	5 years
Light colour	N/A
Dimmable	No
Housing colour	RAL 9010 - Pure white
IP rating	IP20
IK rating	IK02
Product EAN number	6410014507381

DATA TABLE

General data

Product name	GLOBAL TRAC PRO X FEED WHITE
Technology	Accessory
Housing	PC Polycarbonate
General application	Retail
Operating temperature range (°C)	0°C...+25°C
ETIM Class	EC002556
E-number SE	7402236
Warranty	5 years

Optical data

Light colour	N/A
--------------	-----

Electrical data

Dimmable	No
----------	----

Global Trac Electrical Accessories

GLOBAL TRAC PRO X FEED WHITE

XTS38-3

Physical data

Housing colour	RAL 9010 - Pure white
IP rating	IP20
IK rating	IK02
Nominal Product Length (mm)	166
Nominal Product Width (mm)	166
Nominal Product Height (mm)	33
Weight (kg)	0.196

Packaging

Single packaging type	Plastic
Product EAN number	6410014507381
Packaging single length / height (cm)	18.2
Packaging single width (cm)	24.5
Packaging single depth (cm)	3.3
DUN14 (outer)	06410014507381
Units per outer package	25
Packaging outer length / height (cm)	24.5
Packaging outer width (cm)	31.9
Packaging outer depth (cm)	19.7

Safety data

Optimal operating condition (°C)	0-25
Special purpose lamp	No
Dry applications use only	Yes

TECHNICAL DRAWINGS

