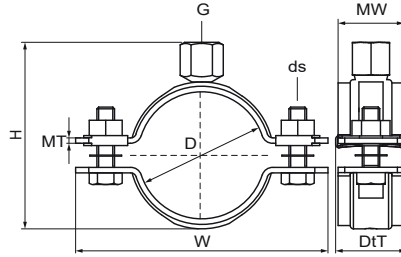


Walraven Heavy Duty Clamp HD500 (M8/10) (BUP1000)

(B1004)

for steel pipes



Features & benefits

- two-part clamp with two locking bolts
- heavy design
- bolts secured with anti-loss washer
- with CO₂ welded connection nut
- material: steel
- surface protection:
- product is part of the Walraven BIS UltraProtect® 1000 system
- suitable for in- and outdoor applications
- stands min. 1,000 hours salt spray test (max. 5% red rust) according to ISO 9227
- also available: noise insulating lining of silicone rubber (reddish brown), heat resistant up to +200 °C (A 35 15)
- tested for fire safety



Product Number	VVS Number	Outside Pipe Diameter	DN	Pipe Diameter Imperial	Connection Thread	Total Height	Total Width	Total Depth	Material Width	Material Thickness	Screw Size	Maximum Allowed Load Faz	Approvals
Reference Letter		D	D	D	G	H	W	Dt	MW	MT	ds	F _{0,z}	
Unit description		mm		"		mm	mm	mm	mm	mm		N	
33038019	18024119	15 - 19	DN 10	3/8	M8/M10	46	75	32	30	2.50	M8	2,100	RAL-GZ 656, ITB (KOT), CE, ETA, RAL-GZ 655/B, EPD
33038023	18024123	19 - 23	DN 15	1/2	M8/M10	50	79	32	30	2.50	M8	2,100	VdS, RAL-GZ 656, ITB (KOT), CE, ETA, RAL-GZ 655/B, EPD
33038030	18024130	25 - 30	DN 20	3/4	M8/M10	57	85	32	30	2.50	M8	2,100	VdS, RAL-GZ 656, ITB (KOT), CE, ETA, RAL-GZ 655/B, EPD
33038036	18024136	31 - 36	DN 25	1	M8/M10	63	91	32	30	2.50	M8	2,100	VdS, RAL-GZ 656, ITB (KOT), CE, ETA, RAL-GZ 655/B, EPD
33038042	18024142	37 - 42			M8/M10	69	98	32	30	2.50	M8	2,100	VdS, RAL-GZ 656, ITB (KOT), CE, ETA, RAL-GZ 655/B, EPD
33038045	18024145	40 - 45	DN 32	1 1/4	M8/M10	72	102	32	30	2.50	M8	2,100	VdS, RAL-GZ 656, ITB (KOT), CE, ETA, RAL-GZ 655/B, EPD
33038052	18024152	47 - 52	DN 40	1 1/2	M8/M10	79	109	32	30	2.50	M8	2,100	VdS, RAL-GZ 656, ITB (KOT), CE, ETA, RAL-GZ 655/B, EPD
33038058	18024158	53 - 58			M8/M10	85	114	32	30	2.50	M8	2,100	RAL-GZ 656, VdS, ITB (KOT), CE, ETA, RAL-GZ 655/B, EPD
33038065	18024161	59 - 65	DN 50	2	M8/M10	92	121	32	30	2.50	M8	2,100	RAL-GZ 656, VdS, ITB (KOT), CE, ETA, RAL-GZ 655/B, EPD
33038071	18024162	66 - 71			M8/M10	98	129	32	30	2.50	M8	2,100	RAL-GZ 655/B, RAL-GZ 656, ITB (KOT), CE, ETA, EPD