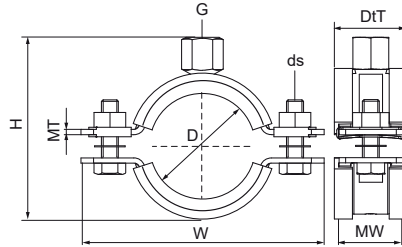


Walraven Heavy Duty Clamp HD1501 (M10/12) (BUP1000)

(A1005)

for metal pipes



Features & benefits

- two-part clamp with two locking bolts
- heavy design
- bolts secured with anti-loss washer
- with CO₂ welded connection nut
- material: steel
- surface protection:
- product is part of the Walraven BIS UltraProtect® 1000 system
- suitable for in- and outdoor applications
- stands min. 1,000 hours salt spray test (max. 5% red rust) according to ISO 9227
- sound insulating lining according DIN 4109
- noise reduction according to ISO 3822-1 up to 18 dB(A)
- tested for fire safety



Product Number	VVS Number	Outside Pipe Diameter	DN	Pipe Diameter Imperial	Connection Thread	Total Height	Total Width	Total Depth	Material Width	Material Thickness	Screw Size	Maximum Allowed Load Faz	Approvals
Reference Letter		D	D	D	G	H	W	DdT	MW	MT	ds	Fa,z	
Unit description		mm		"		mm	mm	mm	mm	mm		N	
33148071	18021662	65 - 71	-	-	M10/M12	115	137	36	30	3.00	M8	2,300	RAL-GZ 656, ITB (KOT), CE, ETA, RAL-GZ 655/B, EPD
33148078	18021663	72 - 78	DN 65	2½	M10/M12	122	144	36	30	3.00	M8	2,300	RAL-GZ 656, ITB (KOT), CE, ETA, RAL-GZ 655/B, EPD
33148085	18021665	79 - 85	-	-	M10/M12	129	151	36	30	3.00	M8	2,300	RAL-GZ 656, ITB (KOT), CE, ETA, RAL-GZ 655/B, EPD
33148092	18021666	86 - 92	DN 80	3	M10/M12	136	158	36	30	3.00	M8	2,300	RAL-GZ 656, ITB (KOT), CE, ETA, RAL-GZ 655/B, EPD
33148109	18021672	101 - 109	-	-	M10/M12	153	175	36	30	3.00	M8	2,300	RAL-GZ 656, ITB (KOT), CE, ETA, RAL-GZ 655/B, EPD
33148116	18021675	108 - 116	DN 100	4	M10/M12	160	182	36	30	3.00	M8	2,300	RAL-GZ 656, ITB (KOT), CE, ETA, RAL-GZ 655/B, EPD
33148133	18021678	125 - 133	-	-	M10/M12	177	199	32	30	3.00	M8	2,300	RAL-GZ 656, ITB (KOT), CE, ETA, RAL-GZ 655/B, EPD
33148140	18021679	132 - 140	DN 125	5	M10/M12	184	206	32	30	3.00	M8	2,300	RAL-GZ 656, ITB (KOT), CE, ETA, RAL-GZ 655/B, EPD
33148169	18021682	159 - 169	DN 150	6	M10/M12	220	255	45	38	4.00	M10	3,800	ITB (KOT), CE, ETA, RAL-GZ 655/B, EPD
33148188	18024718	178 - 188	-	-	M10/M12	239	274	45	38	4.00	M10	3,800	ITB (KOT), CE, ETA, RAL-GZ 655/B, EPD
33148204	18024720	194 - 204	-	-	M10/M12	256	291	45	38	4.00	M10	3,800	ITB (KOT), CE, ETA, RAL-GZ 655/B, EPD
33148213	18024721	203 - 213	-	-	M10/M12	264	299	45	38	4.00	M10	3,800	ITB (KOT), CE, ETA, RAL-GZ 655/B, EPD
33148227	18024722	217 - 227	DN 200	8	M10/M12	278	322	45	38	4.00	M12	3,800	ITB (KOT), CE, ETA, RAL-GZ 655/B, EPD