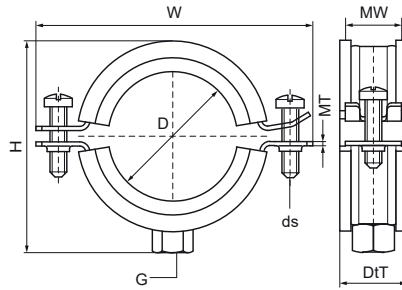


Walraven BISMAT® 2000 (M8/10) 2-screw

(A0524)

for steel, copper, cast iron and plastic (multilayer) pipe



Features & benefits

- two-screw clamp
- with Walraven BISMAT® quick locking system
- material: steel
- zinc plated
- sound insulating lining according DIN 4109
- noise reduction according to ISO 3822-1 up to 23 dB(A)
- tested for fire safety



Product Number	VVS Number	Outside Pipe Diameter	DN	Pipe Diameter Imperial	Connection Thread	Total Height	Total Width	Total Depth	Material Width	Material Thickness	Screw Size	Maximum Allowed Load Faz	Approvals
Reference Letter		D	D	D	G	H	W	DtT	MW	MT	ds	Fa,z	
Unit description		mm		"		mm	mm	mm	mm	mm		N	
3403064		57 - 64	DN 50	2	M8/M10	92	107	29	23	2.00	M6	520	RAL-GZ 656, ITB (KOT), CE, ETA, ISO 3822-1, RAL-GZ 655/B, EPD
3403070		64 - 70	-	-	M8/M10	100	115	29	23	2.00	M6	520	RAL-GZ 656, ITB (KOT), CE, ETA, ISO 3822-1, RAL-GZ 655/B, EPD
3403080		73 - 80	DN 65	2½	M8/M10	110	125	29	23	2.00	M6	520	RAL-GZ 656, ITB (KOT), CE, ETA, ISO 3822-1, RAL-GZ 655/B, EPD
3403091		83 - 91	DN 80	3	M8/M10	122	136	31	25	2.50	M6	935	RAL-GZ 656, ITB (KOT), CE, ETA, ISO 3822-1, RAL-GZ 655/B, EPD
3403105		100 - 105	-	-	M8/M10	137	151	31	25	2.50	M6	935	RAL-GZ 656, ITB (KOT), CE, ETA, ISO 3822-1, RAL-GZ 655/B, EPD
3403114		114	DN 100	4	M8/M10	145	159	31	25	2.50	M6	935	RAL-GZ 656, ITB (KOT), CE, ETA, ISO 3822-1, RAL-GZ 655/B, EPD
3403119	18004176	116 - 119	-	-	M8/M10	150	164	31	25	2.50	M6	935	ITB (KOT), CE, ETA, ISO 3822-1, RAL-GZ 655/B, EPD
3403125		122 - 125	-	-	M8/M10	158	172	31	25	2.50	M6	935	ITB (KOT), CE, ETA, ISO 3822-1, RAL-GZ 655/B, EPD
3403141		133 - 141	DN 125	5	M8/M10	172	187	31	25	2.50	M6	935	ITB (KOT), CE, ETA, ISO 3822-1, RAL-GZ 655/B, EPD