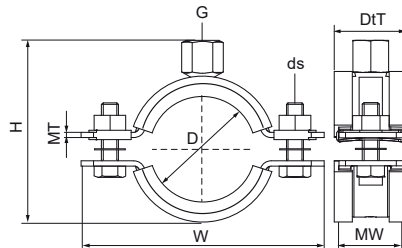


Walraven Heavy Duty Clamp HD1501 (M16) (BUP1000)

(A1006)

for metal pipes



Features & benefits

- two-part clamp with two locking bolts
- heavy design
- bolts secured with anti-loss washer
- with CO₂ welded connection nut
- material: steel
- surface protection:
- product is part of the Walraven BIS UltraProtect® 1000 system
- suitable for in- and outdoor applications
- stands min. 1,000 hours salt spray test (max. 5% red rust) according to ISO 9227
- sound insulating lining according DIN 4109
- noise reduction according to ISO 3822-1 up to 18 dB(A)
- tested for fire safety



Product Number	Outside Pipe Diameter	DN	Pipe Diameter Imperial	Connection Thread	Total Height	Total Width	Total Depth	Material Width	Material Thickness	Screw Size	Maximum Allowed Load Faz	Approvals
Reference Letter	D	D	D	G	H	W	DtT	MW	MT	ds	Fa,z	
Unit description	mm		"		mm	mm	mm	mm	mm		N	
33168169	159 - 169	DN 150	6	M16	207	255	45	38	4.00	M10	3,800	ITB (KOT), ETA, ISO 3822-1, CE, RAL-GZ 655/B, EPD
33168188	178 - 188	-	-	M16	239	274	45	38	4.00	M10	3,800	ITB (KOT), ETA, ISO 3822-1, CE, RAL-GZ 655/B, EPD
33168204	194 - 204	-	-	M16	244	291	45	38	4.00	M10	3,800	ITB (KOT), ETA, ISO 3822-1, CE, RAL-GZ 655/B, EPD
33168213	203 - 213	-	-	M16	252	299	45	38	4.00	M10	3,800	ITB (KOT), ETA, ISO 3822-1, CE, RAL-GZ 655/B, EPD
33168227	217 - 227	DN 200	8	M16	252	322	45	38	4.00	M12	3,800	ITB (KOT), ETA, ISO 3822-1, CE, RAL-GZ 655/B, EPD
33168250	240 - 250	-	-	M16	288	345	45	38	4.00	M12	3,800	ITB (KOT), ETA, ISO 3822-1, CE, RAL-GZ 655/B, EPD
33168275	265 - 275	DN 250	10	M16	312	368	55	48	5.00	M12	9,200	ITB (KOT), ETA, ISO 3822-1, CE, RAL-GZ 655/B, EPD
33168325	315 - 325	DN 300	12	M16	361	414	55	48	5.00	M12	9,200	ITB (KOT), ETA, ISO 3822-1, CE, RAL-GZ 655/B, EPD
33168364	354 - 364	DN 350	14	M16	400	453	55	48	5.00	M12	9,200	ITB (KOT), ETA, ISO 3822-1, CE, RAL-GZ 655/B, EPD
33168408	398 - 408	DN 400	16	M16	444	497	55	48	5.00	M12	9,200	ITB (KOT), ETA, ISO 3822-1, CE, RAL-GZ 655/B, EPD
33168458	448 - 458	DN 450	18	M16	494	548	55	48	5.00	M12	9,200	ITB (KOT), ETA, ISO 3822-1, CE, RAL-GZ 655/B, EPD
33168509	499 - 509	DN 500	20	M16	545	599	55	48	5.00	M12	9,200	ITB (KOT), ETA, ISO 3822-1, CE, RAL-GZ 655/B, EPD