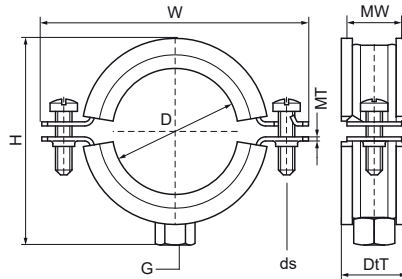


## Walraven Bifix® 1301 Stainless Steel (M8)

(M0505)

for stainless steel and plastic pipes



### Features & benefits

- two-screw clamp
- with quick locking system
- material: stainless steel 1.4404 (AISI 316L)
- noise insulating lining, EPDM rubber, black
- age resistant lining
- sound insulating lining according DIN 4109



Product Number	NRF Number	Outside Pipe Diameter	DN	Pipe Diameter Imperial	Connection Thread	Total Height	Total Width	Total Depth	Material Width	Material Thickness	Screw Size	Maximum Allowed Load Faz	Approvals
Reference Letter		D	D	D	G	H	W	DtT	MW	MT	ds	Fo,z	
Unit description		mm		"		mm	mm	mm	mm	mm		N	
3117015	3486037	11 - 14	DN 8	1/4	M8	33	58	25	20	1.25	M6	900	RAL-GZ 655/B, ITB (KOT), EPD
3117018	3486038	15 - 19	DN 10	3/8	M8	37	62	25	20	1.25	M6	900	RAL-GZ 655/B, ITB (KOT), EPD
3117023	3486039	20 - 23	DN 15	1/2	M8	41	64	25	20	1.25	M6	900	RAL-GZ 655/B, ITB (KOT), EPD
3117029	3486041	25 - 28	DN 20	3/4	M8	47	70	25	20	1.25	M6	900	RAL-GZ 655/B, ITB (KOT), EPD
3117035	3486042	31 - 35	DN 25	1	M8	54	78	25	20	1.25	M6	900	RAL-GZ 655/B, ITB (KOT), EPD
3117043	3486043	40 - 43	DN 32	1 1/4	M8	61	85	25	20	1.25	M6	900	RAL-GZ 655/B, ITB (KOT), EPD
3117049	3486044	47 - 51	DN 40	1 1/2	M8	70	97	25	20	1.25	M6	900	RAL-GZ 655/B, ITB (KOT), EPD
3117056	3486045	52 - 56	-	-	M8	75	97	25	20	1.25	M6	900	RAL-GZ 655/B, ITB (KOT), EPD
3117063	3486046	57 - 64	DN 50	2	M8	80	102	25	20	1.25	M6	900	RAL-GZ 655/B, ITB (KOT), EPD
3117067	3486047	64 - 67	-	-	M8	87	109	25	20	2.00	M6	1,350	RAL-GZ 655/B, ITB (KOT), EPD
3117076	3486048	70 - 76	DN 65	2 1/2	M8	96	118	25	20	2.00	M6	1,350	RAL-GZ 655/B, ITB (KOT), EPD
3117091	3486049	86 - 91	DN 80	3	M8	108	130	25	20	2.00	M6	1,350	RAL-GZ 655/B, ITB (KOT), EPD
3117106	3486051	100 - 106	-	-	M8	132	154	25	20	2.50	M6	1,350	RAL-GZ 655/B, ITB (KOT), EPD
3117116	3486052	108 - 116	DN 100	4	M8	136	158	25	20	2.50	M6	1,710	RAL-GZ 655/B, ITB (KOT), EPD