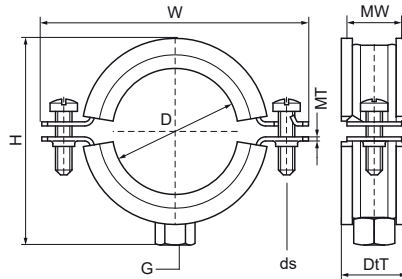


## Walraven Bifix® 1301 Stainless Steel (M8)

(M0505)

for stainless steel and plastic pipes



### Features & benefits

- two-screw clamp
- with quick locking system
- material: stainless steel 1.4404 (AISI 316L)
- noise insulating lining, EPDM rubber, black
- age resistant lining
- sound insulating lining according DIN 4109



Product Number	VVS Number	Outside Pipe Diameter	DN	Pipe Diameter Imperial	Connection Thread	Total Height	Total Width	Total Depth	Material Width	Material Thickness	Screw Size	Maximum Allowed Load Faz	Approvals
Reference Letter		D	D	D	G	H	W	DtT	MW	MT	ds	F <sub>a,z</sub>	
Unit description		mm		"		mm	mm	mm	mm	mm		N	
3117015		11 - 14	DN 8	1/4	M8	33	58	25	20	1.25	M6	900	RAL-GZ 655/B, ITB (KOT), EPD
3117018	18016118	15 - 19	DN 10	3/8	M8	37	62	25	20	1.25	M6	900	RAL-GZ 655/B, ITB (KOT), EPD
3117023	18016123	20 - 23	DN 15	1/2	M8	41	64	25	20	1.25	M6	900	RAL-GZ 655/B, ITB (KOT), EPD
3117029	18016129	25 - 28	DN 20	3/4	M8	47	70	25	20	1.25	M6	900	RAL-GZ 655/B, ITB (KOT), EPD
3117035	18016135	31 - 35	DN 25	1	M8	54	78	25	20	1.25	M6	900	RAL-GZ 655/B, ITB (KOT), EPD
3117043	18016143	40 - 43	DN 32	1 1/4	M8	61	85	25	20	1.25	M6	900	RAL-GZ 655/B, ITB (KOT), EPD
3117049	18016151	47 - 51	DN 40	1 1/2	M8	70	97	25	20	1.25	M6	900	RAL-GZ 655/B, ITB (KOT), EPD
3117056	18016156	52 - 56	-	-	M8	75	97	25	20	1.25	M6	900	RAL-GZ 655/B, ITB (KOT), EPD
3117063	18016161	57 - 64	DN 50	2	M8	80	102	25	20	1.25	M6	900	RAL-GZ 655/B, ITB (KOT), EPD
3117067	18016162	64 - 67	-	-	M8	87	109	25	20	2.00	M6	1,350	RAL-GZ 655/B, ITB (KOT), EPD
3117076	18016163	70 - 76	DN 65	2 1/2	M8	96	118	25	20	2.00	M6	1,350	RAL-GZ 655/B, ITB (KOT), EPD
3117091	18016166	86 - 91	DN 80	3	M8	108	130	25	20	2.00	M6	1,350	RAL-GZ 655/B, ITB (KOT), EPD
3117106	18016170	100 - 106	-	-	M8	132	154	25	20	2.50	M6	1,350	RAL-GZ 655/B, ITB (KOT), EPD
3117116	18016175	108 - 116	DN 100	4	M8	136	158	25	20	2.50	M6	1,710	RAL-GZ 655/B, ITB (KOT), EPD