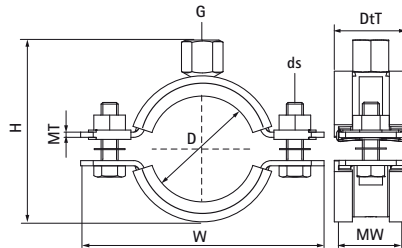


Walraven Heavy Duty Clamp HD1501 (1/2") (BUP1000)

(A1009)

for metal pipes



Features & benefits

- two-part clamp with two locking bolts
- heavy design
- bolts secured with anti-loss washer
- with CO₂ welded connection nut
- material: steel
- surface protection:
- product is part of the Walraven BIS UltraProtect® 1000 system
- suitable for in- and outdoor applications
- stands min. 1,000 hours salt spray test (max. 5% red rust) according to ISO 9227
- sound insulating lining according DIN 4109
- noise reduction according to ISO 3822-1 up to 18 dB(A)
- tested for fire safety



Product Number	VVS Number	Outside Pipe Diameter	DN	Pipe Diameter Imperial	Connection Thread	Total Height	Total Width	Total Depth	Material Width	Material Thickness	Screw Size	Maximum Allowed Load Faz	Approvals
Reference Letter		D	D	D	G	H	W	DtT	MW	MT	ds	Fa,z	
Unit description		mm		"		mm	mm	mm	mm	mm		N	
33178019	18021222	15 - 19	DN 10	3/8	G1/2"	48	82	32	30	2.50	M8	1,500	ITB (KOT), CE, ETA, RAL-GZ 655/B, ISO 3822-1, EPD
33178023	18021223	19 - 23	DN 15	1/2	G1/2"	52	85	32	30	2.50	M8	1,500	ITB (KOT), CE, ETA, RAL-GZ 655/B, ISO 3822-1, EPD
33178029	18021229	25 - 29	DN 20	3/4	G1/2"	58	91	32	30	2.50	M8	1,500	ITB (KOT), CE, ETA, RAL-GZ 655/B, ISO 3822-1, EPD
33178035	18021235	30 - 35	DN 25	1	G1/2"	65	98	32	30	2.50	M8	1,500	ITB (KOT), CE, ETA, RAL-GZ 655/B, ISO 3822-1, EPD
33178045	18021245	40 - 45	DN 32	1 1/4	G1/2"	75	109	32	30	2.50	M8	1,500	ITB (KOT), CE, ETA, RAL-GZ 655/B, ISO 3822-1, EPD
33178051	18021251	46 - 51	DN 40	1 1/2	G1/2"	81	114	32	30	2.50	M8	1,500	ITB (KOT), CE, ETA, RAL-GZ 655/B, ISO 3822-1, EPD
33178059	18021255	53 - 59	-	-	G1/2"	88	121	32	30	2.50	M8	1,500	ITB (KOT), CE, ETA, RAL-GZ 655/B, ISO 3822-1, EPD
33178064	18021261	59 - 64	DN 50	2	G1/2"	94	129	32	30	2.50	M8	1,500	ITB (KOT), CE, ETA, RAL-GZ 655/B, ISO 3822-1, EPD
33178071	18021260	65 - 71	-	-	G1/2"	102	137	36	30	3.00	M8	2,300	ITB (KOT), CE, ETA, RAL-GZ 655/B, ISO 3822-1, EPD
33178078	18021263	72 - 78	DN 65	2 1/2	G1/2"	109	144	36	30	3.00	M8	2,300	ITB (KOT), CE, ETA, RAL-GZ 655/B, ISO 3822-1, EPD
33178085	18021265	79 - 85	-	-	G1/2"	116	151	36	30	3.00	M8	2,300	ITB (KOT), CE, ETA, RAL-GZ 655/B, ISO 3822-1, EPD
33178092	18021266	86 - 92	DN 80	3	G1/2"	123	158	36	30	3.00	M8	2,300	ITB (KOT), CE, ETA, RAL-GZ 655/B, ISO 3822-1, EPD
33178109	18021272	101 - 109	-	-	G1/2"	140	175	36	30	3.00	M8	2,300	ITB (KOT), CE, ETA, RAL-GZ 655/B, ISO 3822-1, EPD
33178116	18021275	108 - 116	DN 100	4	G1/2"	147	182	36	30	3.00	M8	2,300	ITB (KOT), CE, ETA, RAL-GZ 655/B, ISO 3822-1, EPD
33178133	18021278	125 - 133	-	-	G1/2"	164	199	32	30	3.00	M8	2,300	ITB (KOT), CE, ETA, RAL-GZ 655/B, ISO 3822-1, EPD
33178140	18021279	132 - 140	DN 125	5	G1/2"	171	206	32	30	3.00	M8	2,300	ITB (KOT), CE, ETA, RAL-GZ 655/B, ISO 3822-1, EPD
33178169	18021282	159 - 169	DN 150	6	G1/2"	209	255	45	38	4.00	M10	3,800	ITB (KOT), CE, ETA, RAL-GZ 655/B, ISO 3822-1, EPD
33178188	18021284	178 - 188	-	-	G1/2"	229	274	45	38	4.00	M10	3,800	ITB (KOT), CE, ETA, RAL-GZ 655/B, ISO 3822-1, EPD
33178204	18021285	194 - 204	-	-	G1/2"	246	291	45	38	4.00	M10	3,800	ITB (KOT), CE, ETA, RAL-GZ 655/B, ISO 3822-1, EPD
33178213	18021286	203 - 213	-	-	G1/2"	254	299	45	38	4.00	M10	3,800	ITB (KOT), CE, ETA, RAL-GZ 655/B, ISO 3822-1, EPD
33178227	18021287	217 - 227	DN 200	8	G1/2"	267	322	45	38	4.00	M12	3,800	ITB (KOT), CE, ETA, RAL-GZ 655/B, ISO 3822-1, EPD

Walraven Heavy Duty Clamp HD1501 (1/2") (BUP1000)

(A1009)

for metal pipes

Product Number	VVS Number	Outside Pipe Diameter	DN	Pipe Diameter Imperial	Connection Thread	Total Height	Total Width	Total Depth	Material Width	Material Thickness	Screw Size	Maximum Allowed Load Faz	Approvals
<i>Reference Letter</i>		<i>D</i>	<i>D</i>	<i>D</i>	<i>G</i>	<i>H</i>	<i>W</i>	<i>DtT</i>	<i>MW</i>	<i>MT</i>	<i>ds</i>	<i>Fa,z</i>	
<i>Unit description</i>		<i>mm</i>		<i>"</i>		<i>mm</i>	<i>mm</i>	<i>mm</i>	<i>mm</i>	<i>mm</i>		<i>N</i>	
33178250	18021288	240 - 250	-	-	G1/2"	290	345	45	38	4.00	M12	3,800	ITB (KOT), CE, ETA, RAL-GZ 655/B, ISO 3822-1, EPD
33178275	18021289	265 - 275	DN 250	10	G1/2"	314	368	55	48	5.00	M12	9,200	ITB (KOT), CE, ETA, RAL-GZ 655/B, ISO 3822-1, EPD
33178325	18021290	315 - 325	DN 300	12	G1/2"	363	414	55	48	5.00	M12	9,200	ITB (KOT), CE, ETA, RAL-GZ 655/B, ISO 3822-1, EPD
33178364	18021291	354 - 364	DN 350	14	G1/2"	402	453	55	48	5.00	M12	9,200	ITB (KOT), CE, ETA, RAL-GZ 655/B, ISO 3822-1, EPD
33178408	18021292	398 - 408	DN 400	16	G1/2"	446	497	55	48	5.00	M12	9,200	ITB (KOT), CE, ETA, RAL-GZ 655/B, ISO 3822-1, EPD
33178458	18021293	448 - 458	DN 450	18	G1/2"	496	548	55	48	5.00	M12	9,200	ITB (KOT), CE, ETA, RAL-GZ 655/B, ISO 3822-1, EPD
33178509	18021294	499 - 509	DN 500	20	G1/2"	547	599	55	48	5.00	M12	9,200	ITB (KOT), CE, ETA, RAL-GZ 655/B, ISO 3822-1, EPD