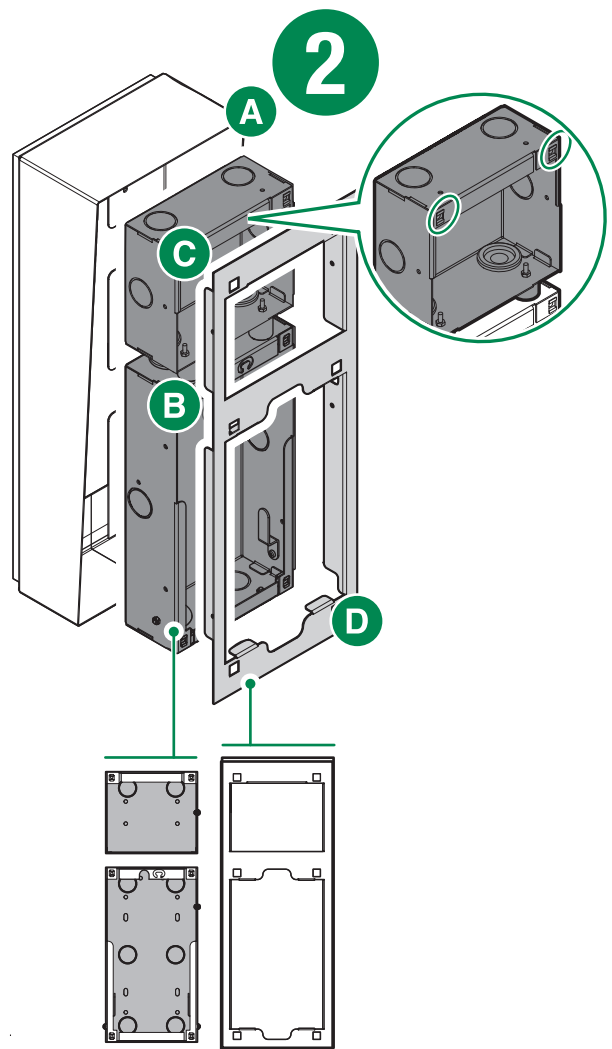
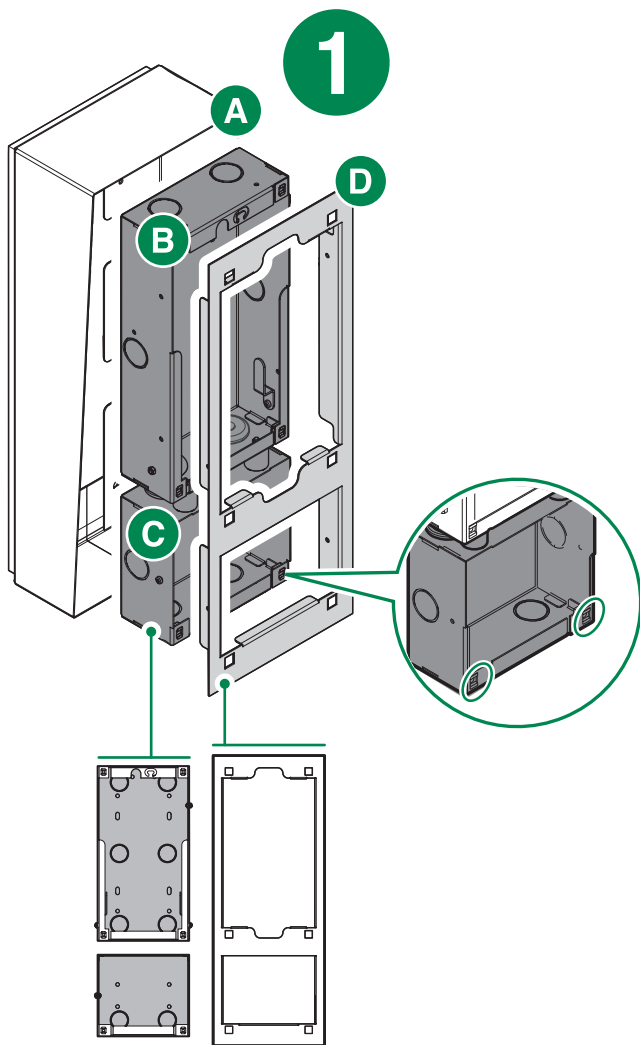


<b>IT</b> MANUALE TECNICO	<b>EN</b> TECHNICAL MANUAL	<b>FR</b> MANUEL TECHNIQUE	<b>NL</b> TECHNISCHE HANDLEIDING	<b>DE</b> TECHNISCHES HANDBUCH
<b>ES</b> MANUAL TÉCNICO	<b>PT</b> MANUAL TÉCNICO	<b>RU</b> ТЕХНИЧЕСКОМУ РУКОВОДСТВУ	<b>TR</b> TEKNIK KILAVUZU	<b>PL</b> INSTRUKCJA TECHNICZNA

Custodia da parete con visiera anti pioggia per pulsantiera e accessorio serie Switch  
 Surface-mounted housing with rain shield for entrance panel and accessory, Switch series  
 Boîtier en saillie avec protection contre la pluie pour platine et accessoire série Switch  
 Opbouwbehuizing met regenkap voor Switch deurstation en accessoires  
 Aufputzgehäuse mit Regenschutzblende für die Türstation und das Zubehör der Serie Switch  
 Caja de pared con visera antilluvia para placa de calle y accesorio serie Switch  
 Cobertura de parede com viseira à prova de chuva para botoneira e acessório série Switch  
 Настенный корпус с козырьком от дождя для кнопочного пульта и дополнительной принадлежности серии Switch  
 Switch serisi tuş paneli ve aksesuarlar için yağmurluk vizörlü duvar kutusu  
 Obudowa naścienna z daszkiem chroniącym panel przyciskowy i akcesoria serii Switch przed deszczem

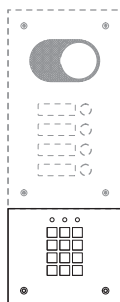


	<b>IX9160A</b>	<b>IX9161A</b>	<b>IX9162A</b>	<b>IX9163A</b>	<b>IX9164A</b>	<b>IX9165A</b>	
	<b>x</b>	155 mm	221,5 mm			308 mm	
	<b>y</b>	397 mm	503,5 mm	610 mm	530 mm	636,5 mm	583,5 mm
<b>z</b>	85 mm	90,5 mm	96 mm	91,5 mm	97,5 mm	94,5 mm	
	<b>IX0101-2-3-4</b>	<b>IX0105-6-7-8</b>	<b>IX0109-10-11-12</b>	<b>IX0212-14-16-18</b>	<b>IX0220-22-24-26</b>	<b>IX0324-27-30-33</b>	
		1-2-3-4	5-6-7-8	9-10-11-12	12-14-16-18	20-22-24-26	24-27-30-33
	<b>x</b>	150 mm	216,5 mm			303 mm	
<b>y</b>	262,5 mm	369 mm	475,5 mm	395,5 mm	502 mm	449 mm	
	<b>IX9100</b>	<b>IX9200</b>	<b>IX9300</b>				
	<b>IX9101</b>	<b>IX9201</b>	<b>IX9301</b>				
	<b>IX9102</b>	<b>IX9202</b>	<b>IX9302</b>				
<b>IX9103</b>	<b>IX9203</b>	<b>IX9303</b>					
<b>IX9104</b>	<b>IX9204</b>	<b>IX9304</b>					
<b>x</b>	150 mm	216,5 mm	303 mm				
<b>y</b>	127,5 mm						

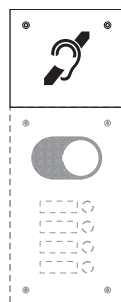


- IT** Per installare l'accessorio SOTTO la pulsantiera seguire le istruzioni di pagina 3.
- EN** To install the accessory UNDER the keypad, follow the instructions on page 3.
- FR** Pour installer l'accessoire SOUS la platine, suivre les consignes page 3.
- NL** Om het accessoire ONDER het deurstation te installeren, volg de instructies op pagina 3.
- DE** Um das Zubehör UNTER der Türstation zu montieren, folgen Sie den Anweisungen auf Seite 3.
- ES** Para instalar el accesorio DEBAJO de la placa de calle, seguir las instrucciones de la página 3.
- PT** Para instalar o acessório SOB a botoneira, seguir as instruções da página 3.
- RU** Для установки принадлежности ПОД пультом следуйте инструкциям на стр. 3.
- TR** Aksesuarı tuş panelinin ALTINA monte etmek için, sayfa 3'teki talimatları izleyiniz.
- PL** W celu zainstalowania akcesorium POD panelem przyciskowym postępować zgodnie z instrukcjami podanymi na stronie 3.

- IT** Per installare l'accessorio SOPRA la pulsantiera seguire le istruzioni di pagina 5.
- EN** To install the accessory ABOVE the keypad, follow the instructions on page 5.
- FR** Pour installer l'accessoire AU-DESSUS de la platine, suivre les consignes page 5.
- NL** Om het accessoire BOVEN het deurstation te installeren, volg de instructies op pagina 5.
- DE** Um das Zubehör ÜBER der Türstation zu montieren, folgen Sie den Anweisungen auf Seite 5.
- ES** Para instalar el accesorio ENCIMA de la placa de calle, seguir las instrucciones de la página 5.
- PT** Para instalar o acessório SOBRE a botoneira, seguir as instruções da página 5.
- RU** Для установки принадлежности НАД пультом следуйте инструкциям на стр. 5.
- TR** Aksesuarı tuş panelinin ÜSTÜNE monte etmek için, sayfa 5'teki talimatları izleyiniz.
- PL** W celu zainstalowania akcesorium NAD panelem przyciskowym postępować zgodnie z instrukcjami podanymi na stronie 5.

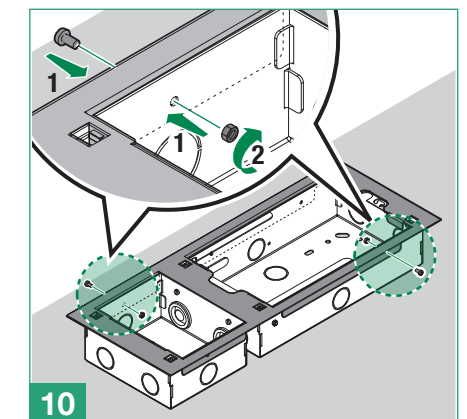
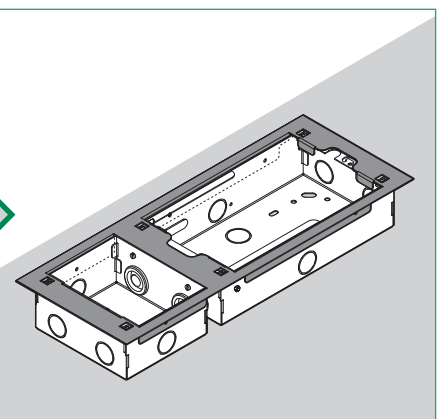
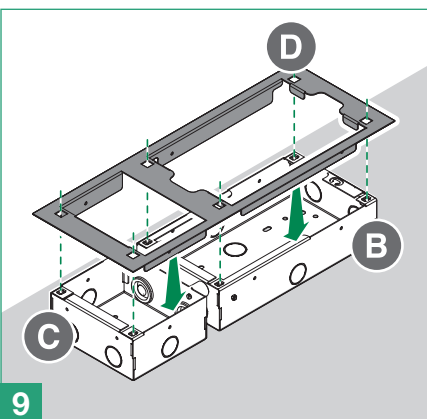
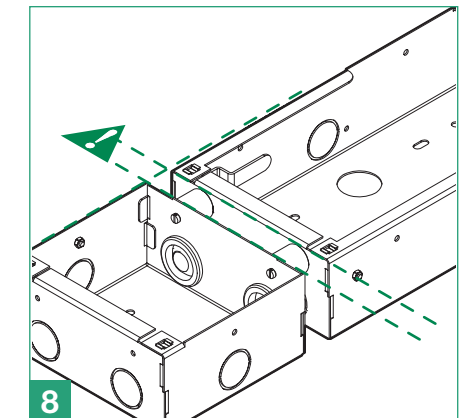
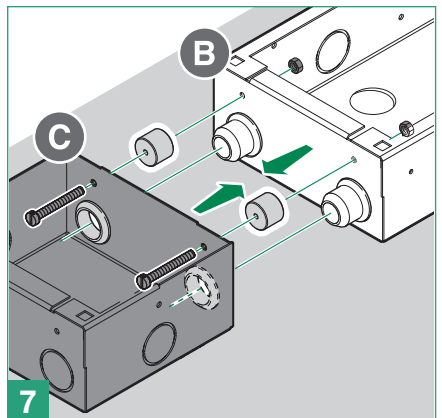
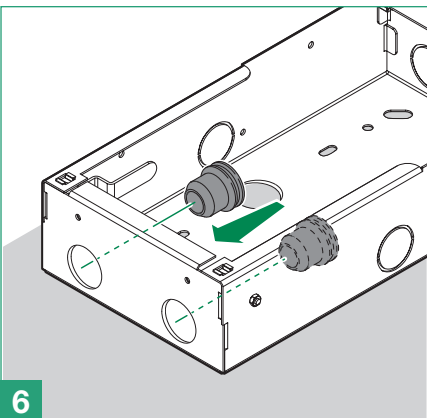
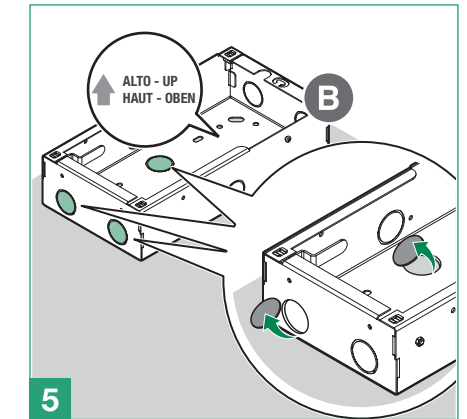
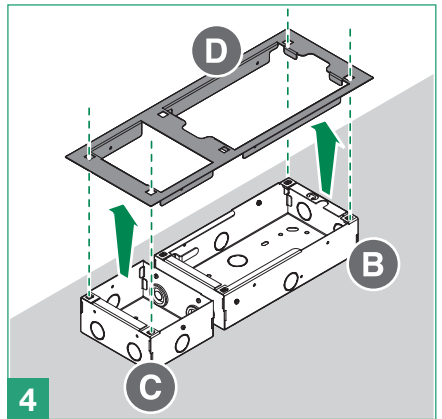
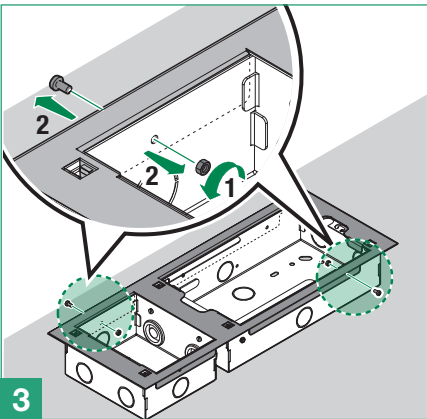
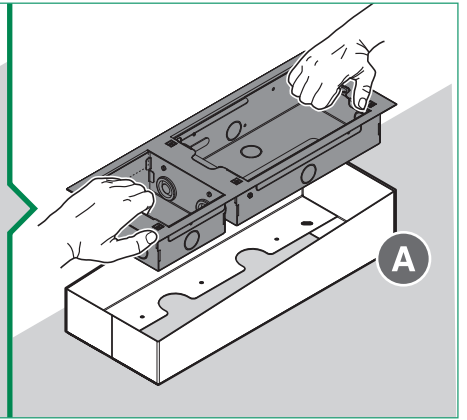
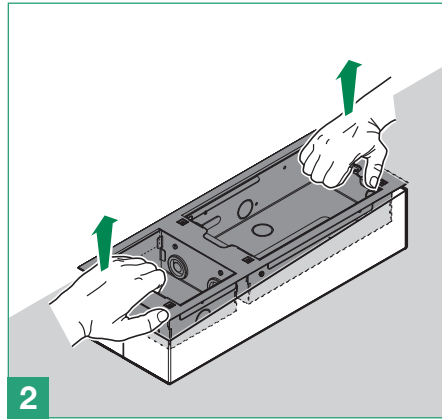
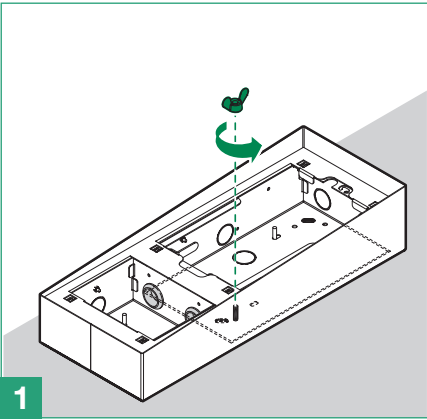


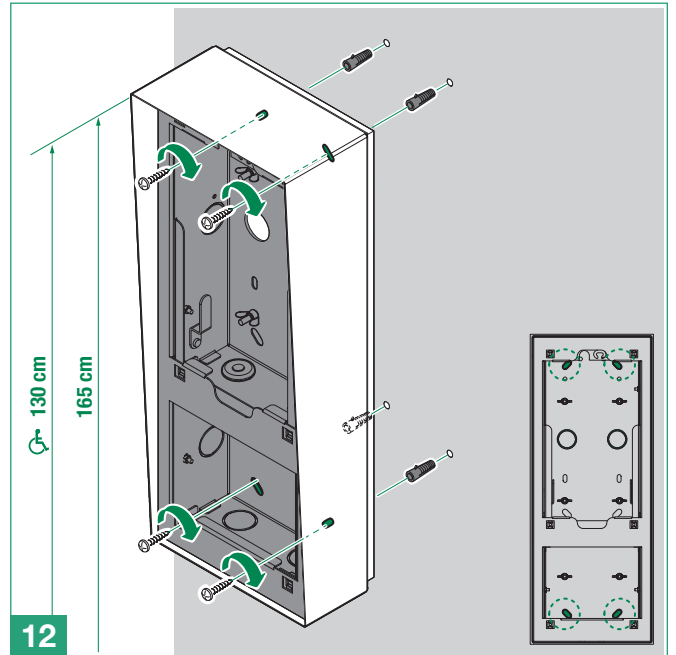
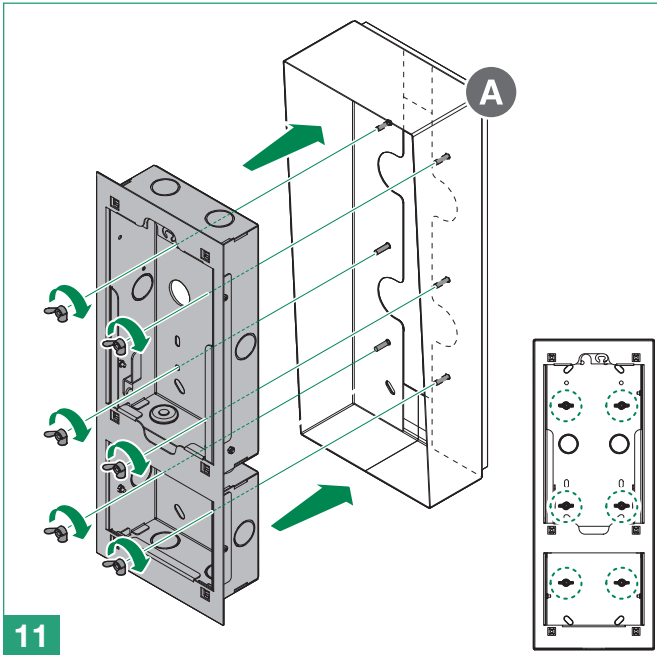
- IT** Per motivi installativi i moduli IX9101 / IX9201 / IX9301 devono essere installati sotto la pulsantiera
- EN** For installation reasons, IX9101 / IX9201 / IX9301 must be installed under the entrance panel
- FR** Pour des raisons d'installation, les modules IX9101 / IX9201 / IX9301 doivent être posés sous la platine
- NL** Ten behoeve van de installatie moeten de modules IX9101 / IX9201 / IX9301 onder het deurstation worden aangebracht
- DE** Installationsbedingt müssen die Module IX9101 / IX9201 / IX9301 unter der Türstation installiert werden
- ES** Por motivos de instalación, los módulos IX9101 / IX9201 / IX9301 deben instalarse debajo de la placa de calle
- PT** Por motivos de instalação, os módulos IX9101/IX9201/IX9301 devem ser instalados sob a botoneira
- RU** По причинам, обусловленным монтажом, модули IX9101/IX9201/IX9301 должны устанавливаться под пультом
- TR** Kurulum ile ilgili nedenlerden dolayı, IX9101 / IX9201 / IX9301 modülleri tuş panelinin altına monte edilmelidir
- PL** Ze względów instalacyjnych moduły IX9101 / IX9201 / IX9301 należy montować pod panelem przyciskowym



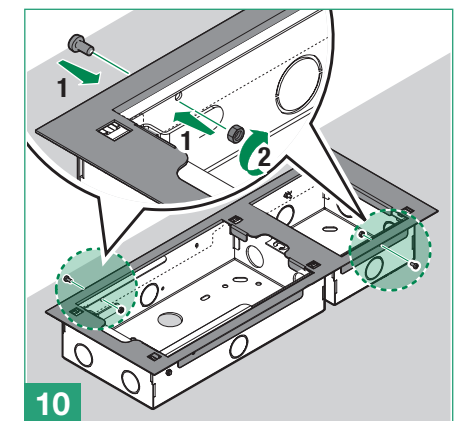
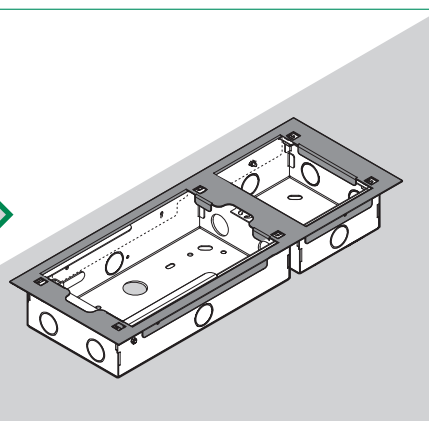
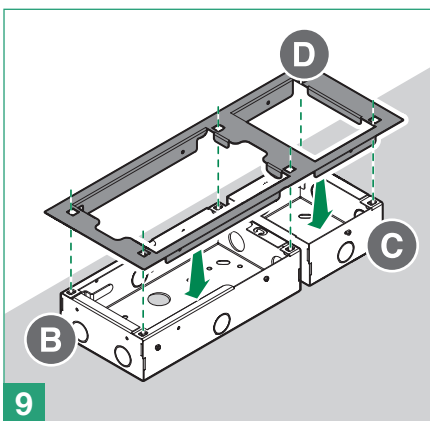
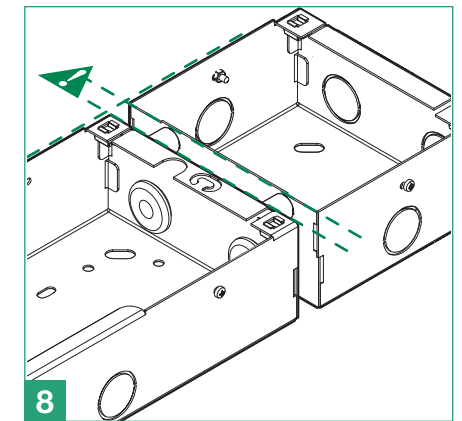
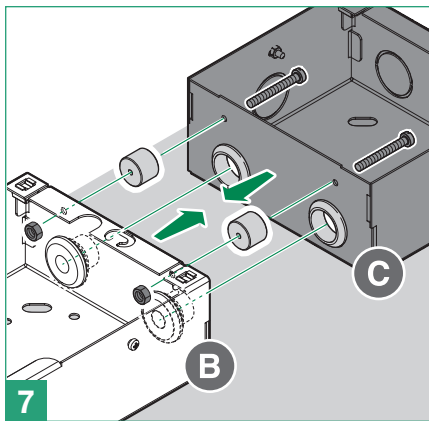
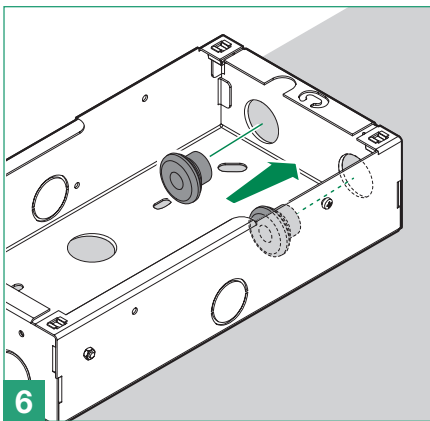
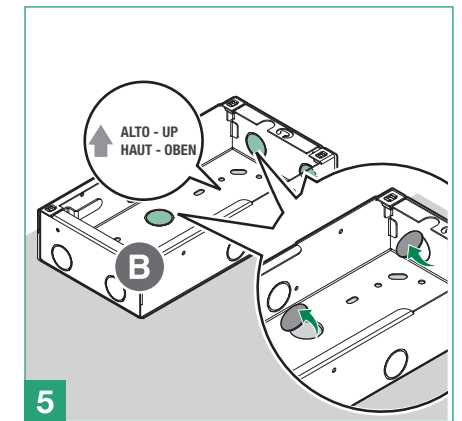
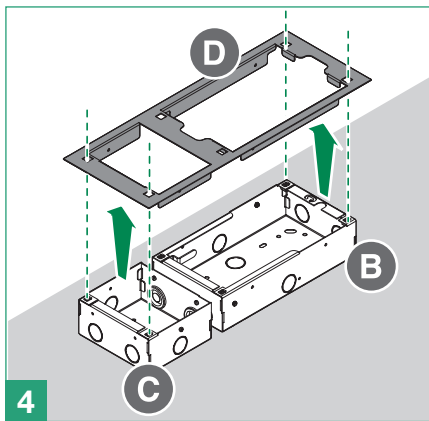
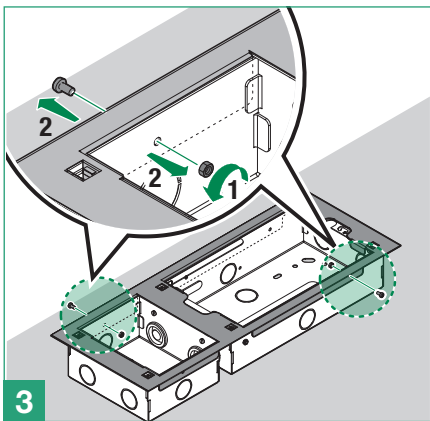
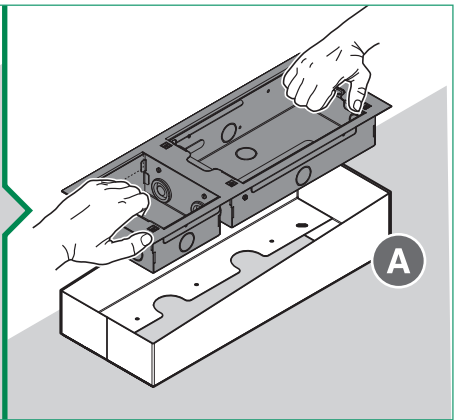
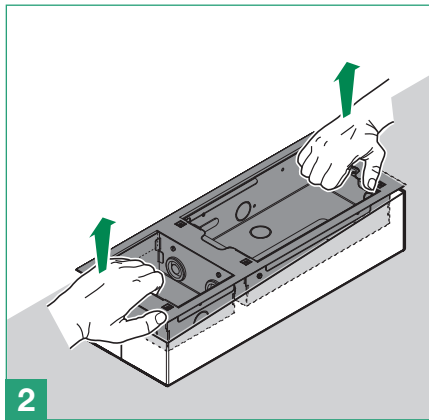
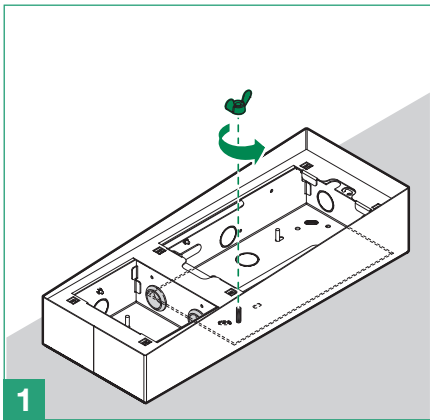
- IT** Per motivi installativi i moduli IX9104 / IX9204 / IX9304 devono essere installati sopra la pulsantiera
- EN** For installation reasons, IX9104 / IX9204 / IX9304 must be installed above the entrance panel
- FR** Pour des raisons d'installation, les modules IX9104 / IX9204 / IX9304 doivent être posés au-dessus de la platine
- NL** Ten behoeve van de installatie moeten de modules IX9104 / IX9204 / IX9304 boven het deurstation worden aangebracht
- DE** Installationsbedingt müssen die Module IX9104 / IX9204 / IX9304 über der Türstation installiert werden
- ES** Por motivos de instalación, los módulos IX9104 / IX9204 / IX9304 deben instalarse sobre la placa de calle
- PT** Por motivos de instalação, os módulos IX9104/IX9204/IX9304 devem ser instalados por cima da botoneira
- RU** По причинам, обусловленным монтажом, модули IX9104/IX9204/IX9304 должны устанавливаться над пультом
- TR** Kurulum ile ilgili nedenlerden dolayı, IX9104 / IX9204 / IX9304 modülleri tuş panelinin üzerine monte edilmelidir
- PL** Ze względów instalacyjnych moduły IX9104 / IX9204 / IX9304 należy montować nad panelem przyciskowym

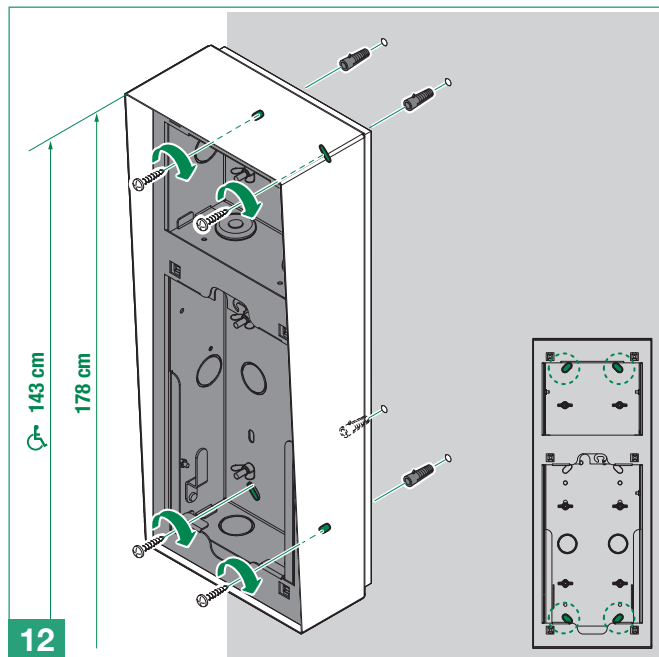
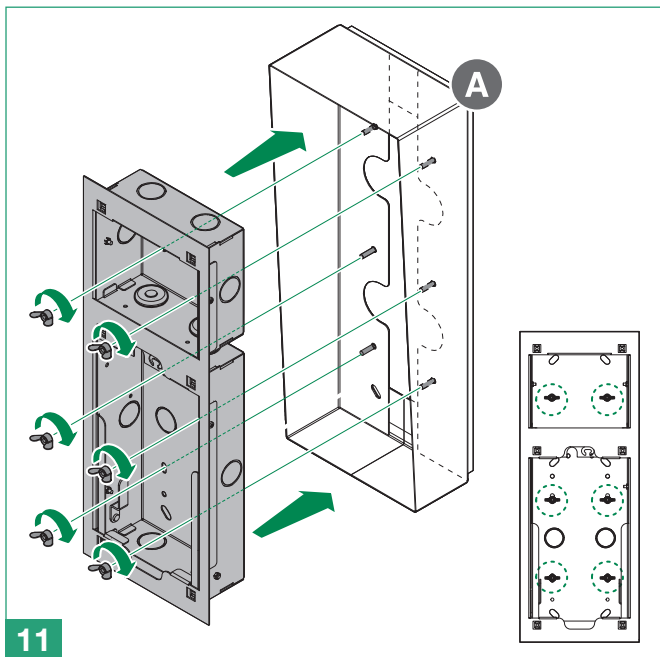
1





# 2





CERTIFIED MANAGEMENT SYSTEMS



[www.comelitgroup.com](http://www.comelitgroup.com)

Via Don Arrigoni, 5 - 24020 Rovetta (BG) - Italy



1ª edizione 10/2019  
cod. 2G40002448