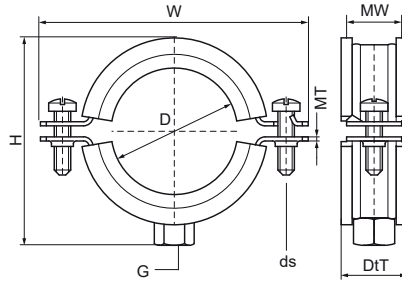


## Walraven Bifix® 1301 Stainless Steel (M10)

(M0506)

for stainless steel and plastic pipes



### Features & benefits

- two-screw clamp
- with quick locking system
- material: stainless steel 1.4404 (AISI 316L)
- noise insulating lining, EPDM rubber, black
- age resistant lining
- sound insulating lining according DIN 4109



Product Number	VVS Number	Outside Pipe Diameter	DN	Pipe Diameter Imperial	Connection Thread	Total Height	Total Width	Total Depth	Material Width	Material Thickness	Screw Size	Maximum Allowed Load Faz	Approvals
Reference Letter		D	D	D	G	H	W	DtT	MW	MT	ds	Fa,z	
Unit description		mm		"		mm	mm	mm	mm	mm		N	
3127018	18016218	15 - 19	DN 10	3/8	M10	38	62	25	20	1.25	M6	900	ITB (KOT), EPD
3127023	18016223	20 - 23	DN 15	1/2	M10	43	64	25	20	1.25	M6	900	ITB (KOT), EPD
3127029	18016229	25 - 28	DN 20	3/4	M10	47	70	25	20	1.25	M6	900	ITB (KOT), EPD
3127035	18016235	31 - 35	DN 25	1	M10	55	78	25	20	1.25	M6	900	ITB (KOT), EPD
3127043	18016243	40 - 43	DN 32	1 1/4	M10	63	85	25	20	1.25	M6	900	ITB (KOT), EPD
3127049	18016250	47 - 51	DN 40	1 1/2	M10	72	97	25	20	1.25	M6	900	ITB (KOT), EPD
3127056	18016255	52 - 56	-	-	M10	75	97	25	20	1.25	M6	900	ITB (KOT), EPD
3127063	18016263	57 - 64	DN 50	2	M10	82	102	25	20	1.25	M6	900	ITB (KOT), EPD
3127067	18016264	64 - 67	-	-	M10	89	109	25	20	2.00	M6	1,350	ITB (KOT), EPD
3127076	18016265	70 - 76	DN 65	2 1/2	M10	98	118	25	20	2.00	M6	1,350	ITB (KOT), EPD
3127085	18016267	79 - 85	-	-	M10	104	124	25	20	2.00	M6	1,350	ITB (KOT), EPD
3127091	18016268	86 - 91	DN 80	3	M10	109	130	25	20	2.00	M6	1,350	ITB (KOT), EPD
3127106	18016270	100 - 106	-	-	M10	135	154	25	20	2.50	M6	1,710	ITB (KOT), EPD
3127116	18016275	108 - 116	DN 100	4	M10	137	158	25	20	2.50	M6	1,710	ITB (KOT), EPD
3127132	18016278	124 - 132	-	-	M10	149	170	25	20	2.50	M6	1,710	ITB (KOT), EPD
3127141	18016179	133 - 141	DN 125	5	M10	159	179	25	20	2.50	M6	1,710	ITB (KOT), EPD
3127168	18016283	159 - 168	DN 150	6	M10	195	233	30	25	2.50	M8	1,710	ITB (KOT), EPD
3127210	18016285	200 - 210	-	-	M10	235	273	30	25	2.50	M8	1,710	ITB (KOT), EPD
3127219	18016286	210 - 219	DN 200	8	M10	247	285	30	25	2.50	M8	1,710	ITB (KOT), EPD
3127225	18016287	219 - 225	-	-	M10	247	284	30	25	2.50	M8	1,710	ITB (KOT), EPD
3127250	18016288	244 - 250	-	-	M10	279	317	30	25	2.50	M8	1,710	ITB (KOT), EPD