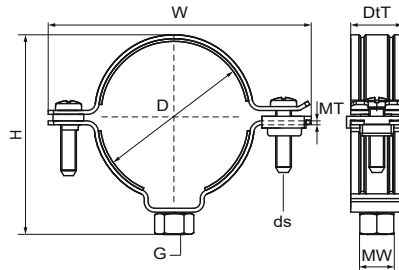


## Walraven Pipe Clamp 4000 (M8) (BUP1000)

(B3505)

for plastic pipes



### Features & benefits

- two-screw clamp
- with quick locking system; will not open during installation
- with removable spacer washers, making the clamp suitable for either sliding or anchoring
- inside clamp diameter larger than outside pipe diameter for expansion or contraction of the pipe
- inside profile to protect pipes from damage
- material: steel 1.0332
- surface protection:
- product is part of the Walraven BIS UltraProtect® 1000 system
- suitable for in- and outdoor applications
- stands min. 1,000 hours salt spray test (max. 5% red rust) according to ISO 9227

### EPD

Product Number	Outside Pipe Diameter	DN	Connection Thread	Total Height	Total Width	Total Depth	Material Width	Material Thickness	Screw Size	Maximum Allowed Load Faz	Approvals
Reference Letter	D	D	G	H	W	DtT	MW	MT	ds	Fa,z	
Unit description	mm			mm	mm	mm	mm	mm		N	
4448032	32	DN 25	M8	54	76	23	20	1.50	M6	910	EPD
4448040	40	DN 32	M8	61	84	23	20	1.50	M6	910	EPD
4448050	50	DN 40	M8	71	94	23	20	1.50	M6	910	EPD
4448063	63	-	M8	84	107	23	20	1.50	M6	910	EPD
4448070	70	-	M8	91	114	23	20	1.50	M6	910	EPD
4448075	70	DN 70	M8	96	119	23	20	1.50	M6	910	EPD
4448080	80	-	M8	101	124	23	20	1.50	M6	910	EPD
4448090	90	DN 80	M8	111	134	23	20	1.50	M6	910	EPD
4448100	100	-	M8	121	144	23	20	1.50	M6	910	EPD
4448110	100	DN 100	M8	132	158	26	23	2.00	M6	2,200	EPD
4448125	125	DN 125	M8	148	173	26	23	2.00	M6	2,200	EPD
4448160	160	DN 150	M8	183	208	26	23	2.00	M6	2,200	EPD
4448200	200	DN 200	M8	224	248	26	23	2.00	M6	2,200	EPD