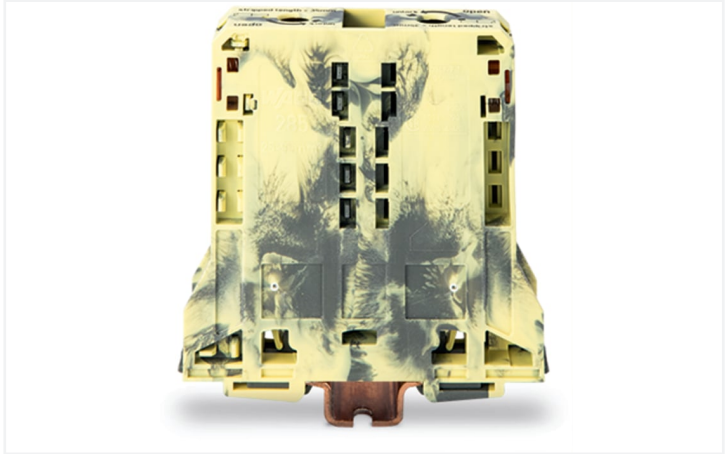
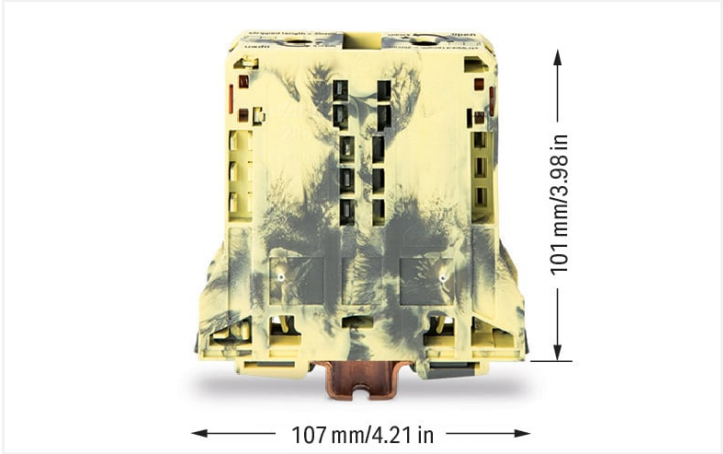


Data Sheet | Item Number: 285-191

2-conductor through terminal block; 95 mm²; lateral marker slots; only for DIN 35 x 15 rail; POWER CAGE CLAMP; 95,00 mm²; dark gray-yellow

<https://www.wago.com/285-191>



Color: ■ dark gray/yellow

Through terminal block, 285 Series, dark gray/yellow

This through terminal block (item number 285-191) is designed for simple and secure connections. Conductors should only be connected to this through terminal block if their strip length is 35 mm. This product features conductor terminals and utilizes POWER CAGE CLAMP. The POWER CAGE CLAMP is perfect for connecting large conductor cross-sections. This universal connector is both reliable and maintenance-free. What's more, you can use it to connect all types of conductors and the clamping point can be locked open, making it easier to use. You do not need to use a torque wrench or prepare the conductor. For example, crimping ferrules is not necessary. Depending on the conductor type, this through terminal block is suitable for conductor cross sections ranging from 25 mm² to 95 mm². It comes with one level and two clamping points that you can use to connect a single potential. The dark gray/yellow housing is made of polyamide (PA66) for insulation. These high-current terminal blocks are mounted using DIN-rails 35 x 15..

Electrical data				
Ratings per		IEC/EN 60947-7-1		
Overvoltage category		III	III	II
Pollution degree		3	2	2
Nominal voltage		1000 V	-	-
Rated surge voltage		12 kV	-	-
Rated current		232 A	-	-
Ratings per IEC/EN 2				
Rated voltage (III/3)		1500 V		
Rated impulse withstand voltage (III/3)		12 kV		
Approvals per		UL 1059		
Use group		B	C	D
Rated voltage		600 V	600 V	-
Rated current		200 A	200 A	-
Approvals per		CSA 22.2 No 158		
Use group		B	C	D
Rated voltage		1000 V	1000 V	-
Rated current		210 A	-	-
Power Loss				
Power loss, per pole (potential)		7.5354 W		
Rated current I _N for specified power loss		232 A		
Resistance value for specified, current-dependent power loss		0.00014 Ω		
General information				
Voltage type 1		AC/DC		
Voltage type 2		DC		

Connection data

Clamping units	2
Total number of potentials	1
Number of levels	1
Number of jumper slots	2

Connection 1

Connection technology	POWER CAGE CLAMP
Actuation type	T-wrench; 8 mm
Connectable conductor materials	Copper
Nominal cross-section	95 mm ²
Solid conductor	25 ... 95 mm ² / 4 ... 4/0 AWG
Stranded conductor	25 ... 95 mm ² / 4 ... 4/0 AWG
Fine-stranded conductor	25 ... 95 mm ² / 4 ... 4/0 AWG
Fine-stranded conductor; with insulated ferrule	25 ... 95 mm ² / 4 ... 4/0 AWG
Fine-stranded conductor; with uninsulated ferrule	25 ... 95 mm ² / 4 ... 4/0 AWG
Strip length	35 mm / 1.38 inches
Wiring direction	Side-entry wiring

Physical data

Width	25 mm / 0.984 inches
Height	107 mm / 4.213 inches
Depth from upper-edge of DIN-rail	101 mm / 3.976 inches

Mechanical data

Mounting type	DIN-rail 35 x 15
Mounting (note)	only suitable for DIN 35 x 15 rail
Marking level	Side marking

Material data

Note (material data)	Information on material specifications can be found here
Color	dark gray/yellow
Material group	I
Insulation material (main housing)	Polyamide (PA66)
Flammability class per UL94	V0
Fire load	0.734 MJ
Weight	260.7 g

Environmental requirements

Processing temperature	-35 ... +85 °C
Continuous operating temperature	-60 ... +105 °C

Commercial data

eCl@ss 10.0	27-14-11-20
eCl@ss 9.0	27-14-11-20
ETIM 9.0	EC000897
ETIM 8.0	EC000897
PU (SPU)	5 pcs
Packaging type	Box
Country of origin	PL
GTIN	4055143500852
Customs tariff number	85369010000



Environmental Product Compliance	
RoHS Compliance Status	Compliant,No Exemption

Approvals / Certificates

General approvals			Declarations of conformity and manufacturer's declarations		
Approval	Standard	Certificate Name	Approval	Standard	Certificate Name
CCA DEKRA Certification B.V.	EN 60947	NTR NL-7707	EU-Declaration of Confor- mity WAGO GmbH & Co. KG	-	-
CSA DEKRA Certification B.V.	C22.2	154112	UK-Declaration of Confor- mity WAGO GmbH & Co. KG	-	-
KEMA/KEUR DEKRA Certification B.V.	EN 60947	71-105562			
UL Underwriters Laboratories Inc.	UL 1059	E45172			

Approvals for marine applications

Approval	Standard	Certificate Name
ABS American Bureau of Ship- ping	EN 60947	20-HG1941090-PDA
DNV GL Det Norske Veritas, Ger- manischer Lloyd	-	TAE00001V2




Downloads

Environmental Product Compliance	
Compliance Search	
Environmental Product Compliance 285-191	

Documentation

Additional Information			Bid Text		
Technical Section	pdf 2246.92 KB		285-191	19.02.2019	xml 3.24 KB
			285-191	04.01.2018	doc 23.50 KB



CAD/CAE-Data	
CAD data	CAE data
2D/3D Models 285-191	EPLAN Data Portal 285-191
	
	ZUKEN Portal 285-191
	

1 Compatible Products
1.1 Optional Accessories
1.1.1 Cover
1.1.1.1 Cover



Item No.: 285-169
Finger guard; touchproof cover protects unused conductor entries and jumper slots; for 95 mm² high-current tbs; yellow

1.1.2 Current and voltage tap
1.1.2.1 Current and voltage tap



Item No.: 855-951/250-000
Current and voltage tap up to 95 mm²; Primary rated current: 250 A; Secondary rated current: 1 A; Rated power: 0.2 VA; Accuracy class: 0.5; fused

1.1.3 DIN-rail
1.1.3.1 Mounting accessories



Item No.: 210-198
Copper carrier rail; 35 x 15 mm; 2.3 mm thick; 2 m long; unslotted; according to EN 60715; copper-colored



Item No.: 210-508
Steel carrier rail; 35 x 15 mm; 1.5 mm thick; 2 m long; slotted; galvanized; similar to EN 60715; silver-colored



Item No.: 210-197
Steel carrier rail; 35 x 15 mm; 1.5 mm thick; 2 m long; slotted; similar to EN 60715; silver-colored



Item No.: 210-506
Steel carrier rail; 35 x 15 mm; 1.5 mm thick; 2 m long; unslotted; galvanized; similar to EN 60715; silver-colored



Item No.: 210-114
Steel carrier rail; 35 x 15 mm; 1.5 mm thick; 2 m long; unslotted; similar to EN 60715; silver-colored



1.1.4 Ferrule

1.1.4.1 Ferrule



Item No.: 216-435
Ferrule; Sleeve for 50 mm² / AWG 1; unin-
sulated; electro-tin plated; electrolytic
copper; gastight crimped; acc. to DIN
46228, Part 1/08.92

1.1.5 Installation

1.1.5.1 Mounting accessories



Item No.: 285-168
Fixing element; for 95 mm² high-current
terminal blocks; orange



Item No.: 249-197
Screwless end stop; 14 mm wide; for DIN-
rail 35 x 15 and 35 x 7.5; gray

1.1.6 Jumper

1.1.6.1 Jumper



Item No.: 285-495
Jumper; insulated; gray

1.1.7 Marking

1.1.7.1 Group marker carrier



Item No.: 249-105
Group marker carrier; gray

1.1.7.2 Marker



Item No.: 793-5501/000-006
WMB marking card; as card; for terminal
block width 5 - 17.5 mm; stretchable 5 -
5.2 mm; plain; snap-on type; blue



Item No.: 793-5501/000-014
WMB marking card; as card; for terminal
block width 5 - 17.5 mm; stretchable 5 -
5.2 mm; plain; snap-on type; brown



Item No.: 793-5501/000-007
WMB marking card; as card; for terminal
block width 5 - 17.5 mm; stretchable 5 -
5.2 mm; plain; snap-on type; gray



Item No.: 793-5501/000-023
WMB marking card; as card; for terminal
block width 5 - 17.5 mm; stretchable 5 -
5.2 mm; plain; snap-on type; green



Item No.: 793-5501/000-017
WMB marking card; as card; for terminal
block width 5 - 17.5 mm; stretchable 5 -
5.2 mm; plain; snap-on type; light green



Item No.: 793-5501/000-012
WMB marking card; as card; for terminal
block width 5 - 17.5 mm; stretchable 5 -
5.2 mm; plain; snap-on type; orange



Item No.: 793-5501/000-005
WMB marking card; as card; for terminal
block width 5 - 17.5 mm; stretchable 5 -
5.2 mm; plain; snap-on type; red



Item No.: 793-5501/000-024
WMB marking card; as card; for terminal
block width 5 - 17.5 mm; stretchable 5 -
5.2 mm; plain; snap-on type; violet



Item No.: 793-5501
WMB marking card; as card; for terminal
block width 5 - 17.5 mm; stretchable 5 -
5.2 mm; plain; snap-on type; white



Item No.: 793-5501/000-002
WMB marking card; as card; for terminal
block width 5 - 17.5 mm; stretchable 5 -
5.2 mm; plain; snap-on type; yellow



Item No.: 793-501/000-006
WMB marking card; as card; not stretcha-
ble; plain; snap-on type; blue



Item No.: 793-501/000-007
WMB marking card; as card; not stretcha-
ble; plain; snap-on type; gray



1.1.7.2 Marker



[Item No.: 793-501/000-023](#)
WMB marking card; as card; not stretchable; plain; snap-on type; green



[Item No.: 793-501/000-017](#)
WMB marking card; as card; not stretchable; plain; snap-on type; light green



[Item No.: 793-501/000-012](#)
WMB marking card; as card; not stretchable; plain; snap-on type; orange



[Item No.: 793-501/000-005](#)
WMB marking card; as card; not stretchable; plain; snap-on type; red



[Item No.: 793-501/000-024](#)
WMB marking card; as card; not stretchable; plain; snap-on type; violet



[Item No.: 793-501](#)
WMB marking card; as card; not stretchable; plain; snap-on type; white



[Item No.: 793-501/000-002](#)
WMB marking card; as card; not stretchable; plain; snap-on type; yellow



[Item No.: 2009-115/000-006](#)
WMB-Inline; for Smart Printer; 1500 pieces on roll; stretchable 5 - 5.2 mm; plain; snap-on type; blue



[Item No.: 2009-115/000-007](#)
WMB-Inline; for Smart Printer; 1500 pieces on roll; stretchable 5 - 5.2 mm; plain; snap-on type; gray



[Item No.: 2009-115/000-023](#)
WMB-Inline; for Smart Printer; 1500 pieces on roll; stretchable 5 - 5.2 mm; plain; snap-on type; green



[Item No.: 2009-115/000-017](#)
WMB-Inline; for Smart Printer; 1500 pieces on roll; stretchable 5 - 5.2 mm; plain; snap-on type; light green



[Item No.: 2009-115/000-012](#)
WMB-Inline; for Smart Printer; 1500 pieces on roll; stretchable 5 - 5.2 mm; plain; snap-on type; orange



[Item No.: 2009-115/000-005](#)
WMB-Inline; for Smart Printer; 1500 pieces on roll; stretchable 5 - 5.2 mm; plain; snap-on type; red



[Item No.: 2009-115/000-024](#)
WMB-Inline; for Smart Printer; 1500 pieces on roll; stretchable 5 - 5.2 mm; plain; snap-on type; violet



[Item No.: 2009-115](#)
WMB-Inline; for Smart Printer; 1500 pieces on roll; stretchable 5 - 5.2 mm; plain; snap-on type; white



[Item No.: 2009-115/000-002](#)
WMB-Inline; for Smart Printer; 1500 pieces on roll; stretchable 5 - 5.2 mm; plain; snap-on type; yellow

1.1.7.3 Marker carrier



[Item No.: 285-442](#)
Adaptor; gray

1.1.8 Power tap

1.1.8.1 Power tap



[Item No.: 285-407](#)
Power tap; for 95 mm² high-current tbs; gray

1.1.9 Protective warning marker

1.1.9.1 Cover



[Item No.: 285-170](#)
Protective warning marker; with high-voltage symbol, black; yellow



[Item No.: 285-175](#)
Protective warning marker; yellow

1.1.10 Tool

1.1.10.1 Operating tool



Item No.: 285-172
Allen wrench; with a partially insulated shaft; green

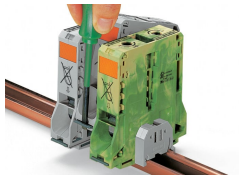
Item No.: 285-173
Allen wrench; with a partially insulated shaft; with anti-rotation protection; green

Installation Notes

Installation



Snapping a terminal block onto DIN-rail (to the left or to the right).



Removing a terminal block from the assembly (to the left or to the right).

Conductor termination

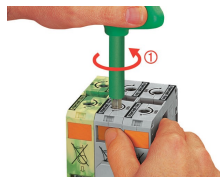


For the optimal clamping force:

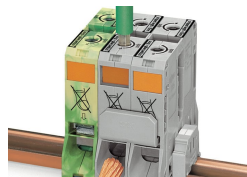
- Bend conductor
- Cut conductor to length (conductor end must be straight)
- Strip conductor



Always observe the on-unit printed strip length guide!



Conductor termination – step 1:
Rotate the T-wrench counter-clockwise to the stop . Next, push in the orange locking tab. The clamp is locked open for hands-free wiring.

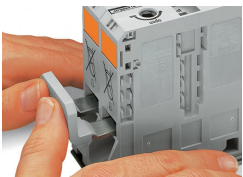


Conductor termination – step 2:
Insert a stripped conductor into the clamping unit until it hits the backstop. Hold in this position.

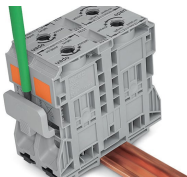


Conductor termination – step 3:
A short counter-clockwise rotation releases the tab. When unlocked, the T-wrench rotates clockwise, securely clamping the conductor.

Commoning

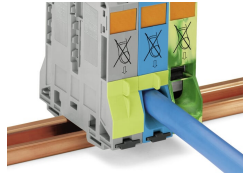


Commoning with an adjacent jumper: insert the jumper above the conductor entry hole – prior to conductor termination. The nominal cross-section remains unchanged.



Removing jumper via operating tool.

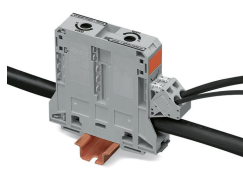
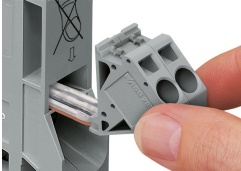
Cover



Protective warning marker may indicate:
Notice: Power is still on even after switching off the main switch!

Yellow, detachable finger guards provide touch-proof safety by shielding jumper contact slots and/or unused conductor entries.

Power tap



Easily and consistently tap directly into the power supply. Insert the unwired tap before opening the clamping unit.

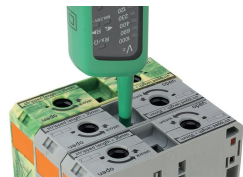
The power taps enable the distribution of the L1, L2 and L3 potentials. The warning covers and finger guards ensure IP20 touch-proof protection.

Security



Risk of Injury!
Do not insert fingers in the conductor entry!

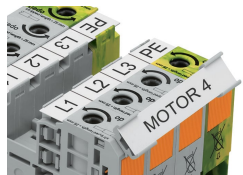
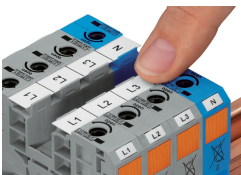
Testing



Testing via touch-proof 4 mm Ø test plugs (not available from WAGO, but offered by industry suppliers such as, Multi-Contact Deutschland GmbH).

Testing
Voltage measurements can be performed, e.g., using a 2-pole voltage tester (Item No. 206-707).

Marking



WMB markers or self-adhesive, printable marking strips can be accommodated on 35, 50 and 95 mm² high-current terminal blocks.

Marker carrier (Item No. 285-442) for marking strips (Item No. 2009-110) or 2 WMB markers for 285-13x, 285-15x and 285-19x Terminal Blocks

