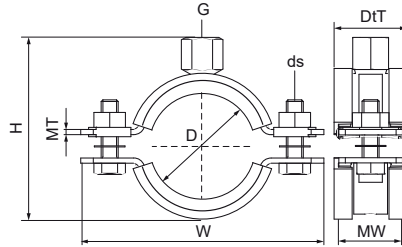


Walraven Heavy Duty Clamp HD1501 (M8/10) (BUP1000)

(A1004)

for metal pipes



Features & benefits

- two-part clamp with two locking bolts
- heavy design
- bolts secured with anti-loss washer
- with CO₂ welded connection nut
- material: steel
- surface protection:
- product is part of the Walraven BIS UltraProtect® 1000 system
- suitable for in- and outdoor applications
- stands min. 1,000 hours salt spray test (max. 5% red rust) according to ISO 9227
- sound insulating lining according DIN 4109
- noise reduction according to ISO 3822-1 up to 18 dB(A)
- tested for fire safety



| Product Number | NRF Number | Outside Pipe Diameter | DN | Pipe Diameter Imperial | Connection Thread | Total Height | Total Width | Total Depth | Material Width | Material Thickness | Screw Size | Maximum Allowed Load Faz | Approvals |
|------------------|------------|-----------------------|-------|------------------------|-------------------|--------------|-------------|-------------|----------------|--------------------|------------|--------------------------|---|
| Reference Letter | | D | D | D | G | H | W | DtT | MW | MT | ds | Fa,z | |
| Unit description | | mm | | " | | mm | mm | mm | mm | mm | | N | |
| 33138019 | 3484819 | 15 - 19 | DN 10 | 3/8 | M8/M10 | 53 | 82 | 32 | 30 | 2.50 | M8 | 1,500 | CE, ETA, ISO 3822-1, RAL-GZ 655/B, RAL-GZ 656, ITB (KOT), EPD |
| 33138023 | 3484821 | 19 - 23 | DN 15 | 1/2 | M8/M10 | 57 | 85 | 32 | 30 | 2.50 | M8 | 1,500 | CE, ETA, ISO 3822-1, RAL-GZ 655/B, RAL-GZ 656, ITB (KOT), EPD |
| 33138029 | 3484877 | 25 - 29 | DN 20 | 3/4 | M8/M10 | 63 | 91 | 32 | 30 | 2.50 | M8 | 1,500 | CE, ETA, ISO 3822-1, RAL-GZ 655/B, RAL-GZ 656, ITB (KOT), EPD |
| 33138035 | 3484878 | 30 - 35 | DN 25 | 1 | M8/M10 | 69 | 98 | 32 | 30 | 2.50 | M8 | 1,500 | CE, ETA, ISO 3822-1, RAL-GZ 655/B, RAL-GZ 656, ITB (KOT), EPD |
| 33138045 | 3484879 | 40 - 45 | DN 32 | 1 1/4 | M8/M10 | 79 | 109 | 32 | 30 | 2.50 | M8 | 1,500 | CE, ETA, ISO 3822-1, RAL-GZ 655/B, RAL-GZ 656, ITB (KOT), EPD |
| 33138051 | 3484881 | 46 - 51 | DN 40 | 1 1/2 | M8/M10 | 85 | 114 | 32 | 30 | 2.50 | M8 | 1,500 | CE, ETA, ISO 3822-1, RAL-GZ 655/B, RAL-GZ 656, ITB (KOT), EPD |
| 33138059 | 3484882 | 53 - 59 | - | - | M8/M10 | 92 | 121 | 32 | 30 | 2.50 | M8 | 1,500 | CE, ETA, ISO 3822-1, RAL-GZ 655/B, RAL-GZ 656, ITB (KOT), EPD |
| 33138064 | 3484883 | 59 - 64 | DN 50 | 2 | M8/M10 | 98 | 129 | 32 | 30 | 2.50 | M8 | 1,500 | CE, ETA, ISO 3822-1, RAL-GZ 655/B, RAL-GZ 656, ITB (KOT), EPD |