

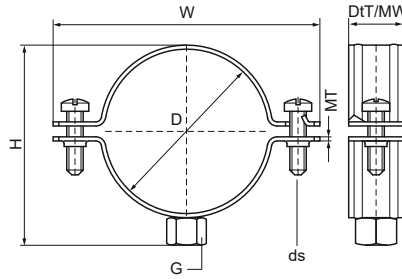
Walraven Bifix® 300 Stainless Steel (M8)

(M1005)

for stainless steel and plastic pipes

Features & benefits

- two-screw clamp
- with quick locking system
- material: stainless steel 1.4404 (AISI 316L)



Product Number	Outside Pipe Diameter	DN	Pipe Diameter Imperial	Connection Thread	Total Height	Total Width	Total Depth	Material Width	Material Thickness	Screw Size	Maximum Allowed Load Faz	Approvals
Reference Letter	D	D	D	G	H	W	DtT	MW	MT	ds	F _{0,z}	
Unit description	mm		"		mm	mm	mm	mm	mm		N	
3017017	15 - 19	DN 10	3/8	M8	31	56	20	20	1.25	M6	1,000	RAL-GZ 655/B, ITB (KOT), EPD
3017022	20 - 22	DN 15	1/2	M8	33	58	20	20	1.25	M6	1,000	RAL-GZ 655/B, ITB (KOT), EPD
3017030	25 - 28	DN 20	3/4	M8	39	64	20	20	1.25	M6	1,000	RAL-GZ 655/B, ITB (KOT), EPD
3017034	31 - 35	DN 25	1	M8	47	72	20	20	1.25	M6	1,000	RAL-GZ 655/B, ITB (KOT), EPD
3017042	40 - 43	DN 32	1 1/4	M8	54	80	20	20	1.25	M6	1,000	RAL-GZ 655/B, ITB (KOT), EPD
3017051	47 - 51	DN 40	1 1/2	M8	62	87	20	20	1.25	M6	1,000	RAL-GZ 655/B, ITB (KOT), EPD
3017060	54 - 60	-	-	M8	71	96	20	20	1.25	M6	1,000	RAL-GZ 655/B, ITB (KOT), EPD
3017076	72 - 76	-	-	M8	86	109	20	20	2.00	M6	1,500	RAL-GZ 655/B, ITB (KOT), EPD
3017089	85 - 89	DN 80	3	M8	101	124	20	20	2.00	M6	1,500	RAL-GZ 655/B, ITB (KOT), EPD
3017118	110 - 118	DN 100	4	M8	131	154	20	20	2.50	M6	1,900	RAL-GZ 655/B, ITB (KOT), EPD