

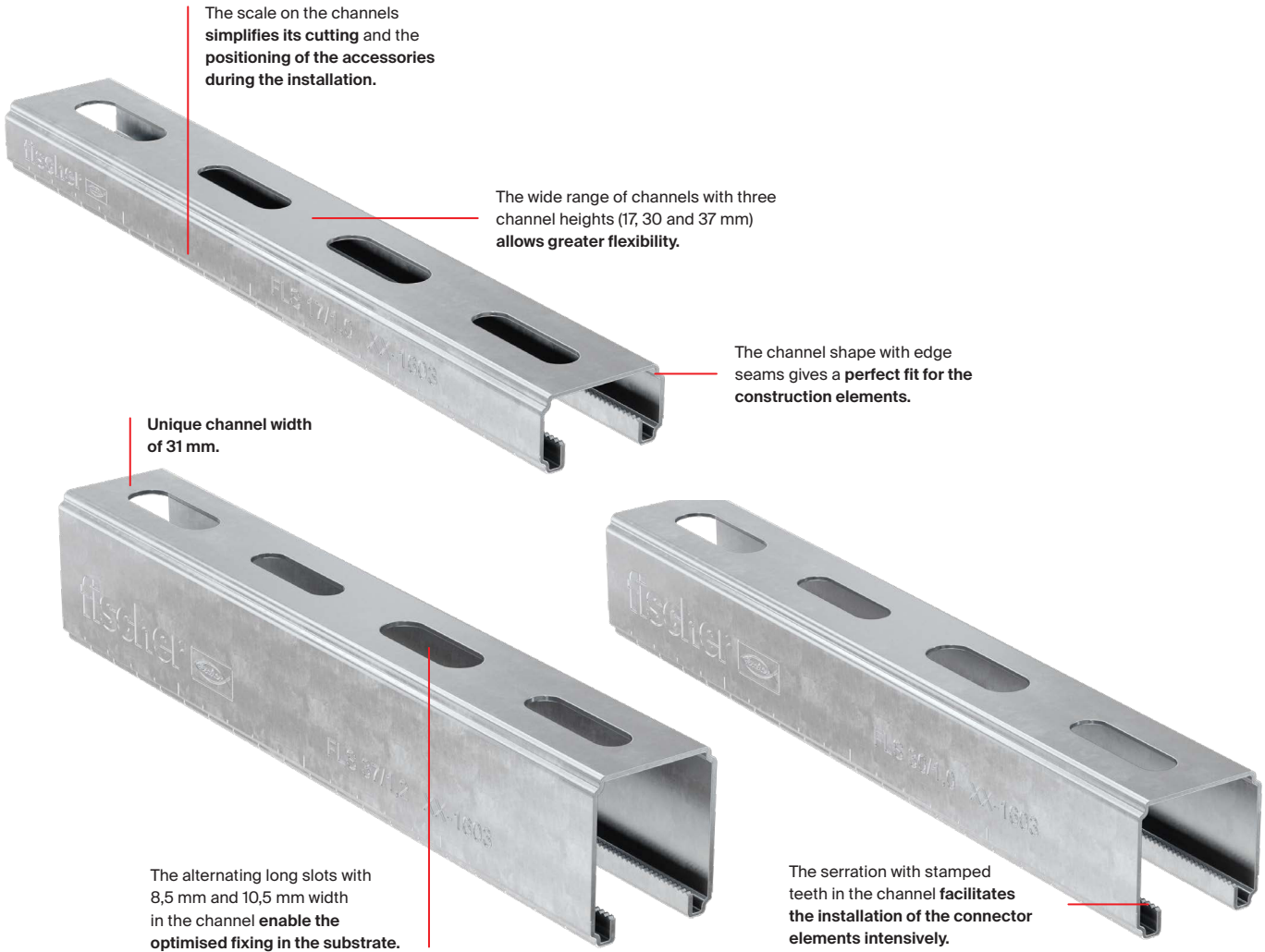
fischer 

**Light channel
system
FLS.**

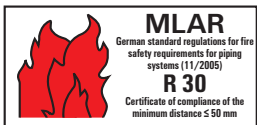


Light channel system FLS. Easy and stable.

Installation channel FLS

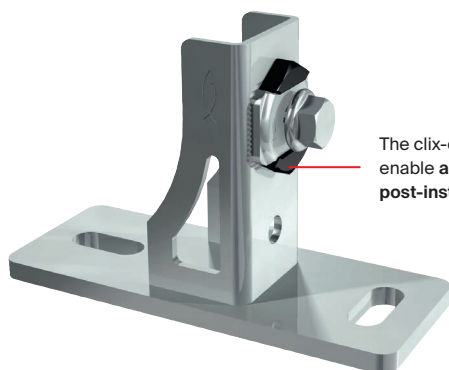


Approval



Applies only to FLS 37 and ALK 37

Saddle flange SF Clix 31 und Angle bracket MW Clix 90°



The clix-elements with 90°-rotation enable a **simple and time-saving post-installation** in set channels.



The pre-assembled accessories guarantee a **time-saving and easy installation** due to the reduced number of articles.

The unique thrust block guarantees a **secure installation position**.

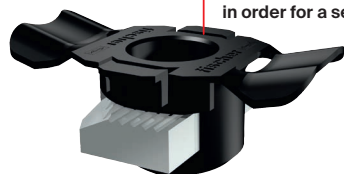
Connection elements



The special spring leg on the clix-elements ensures the required pressure in the channel for a **simple adjustment of the element**.



The unique stop element on the clix-elements **facilitates the precise and error-free 90°-rotation** in the channel.

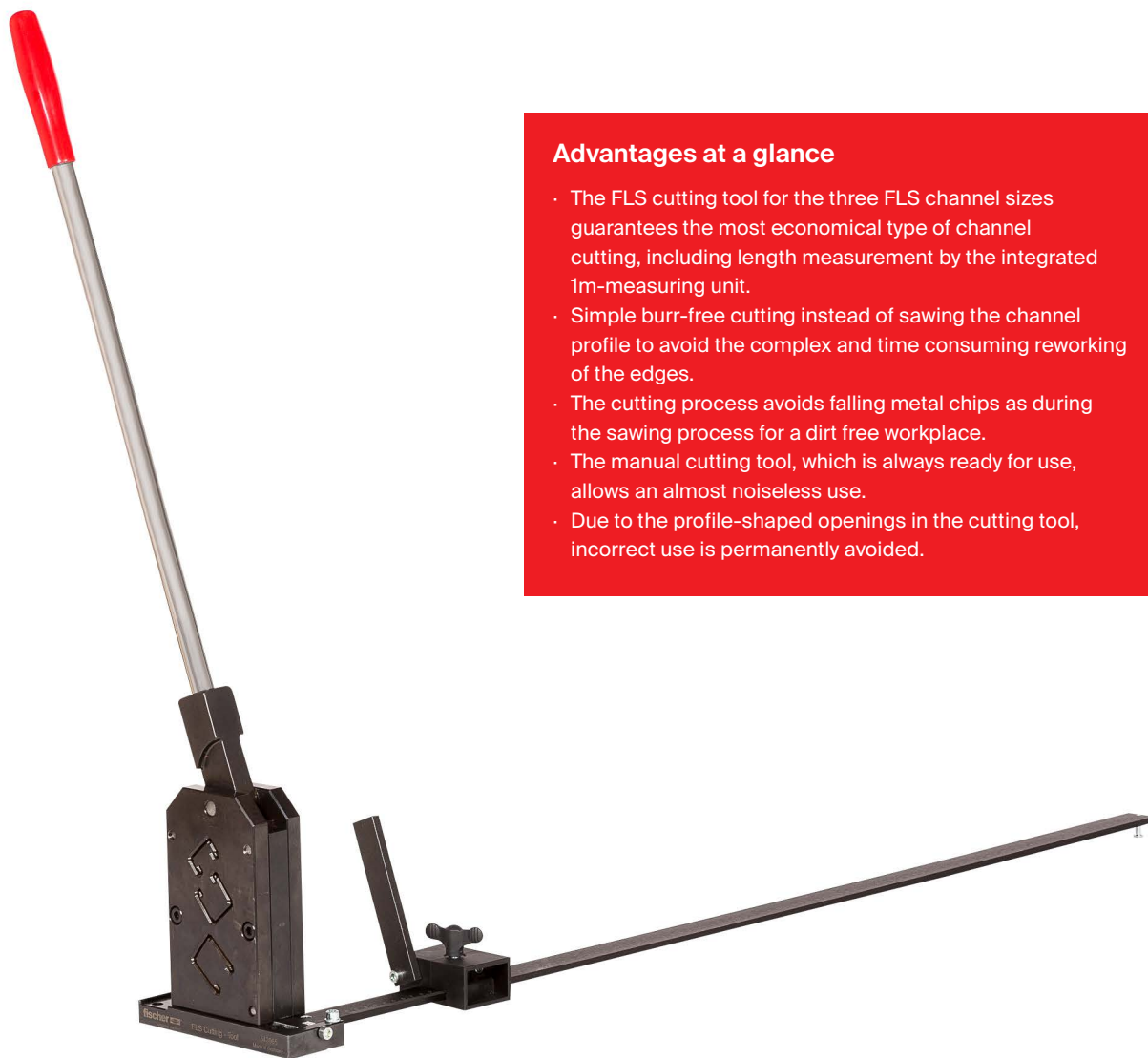


The unique and disappearing thrust block on the plastic holder of the sliding nut Clix P guarantees a **connection without plastic insert in order for a secure metallic connection**.



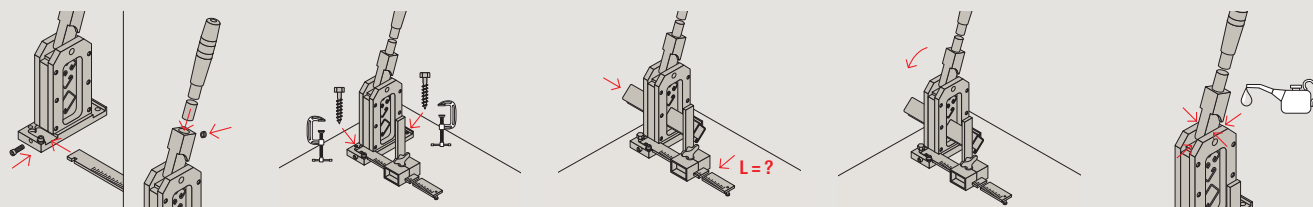
The characteristic retaining brackets on the connector elements guarantee the **formfitting installation in the channel**.

FLS Cutting Tool



Advantages at a glance

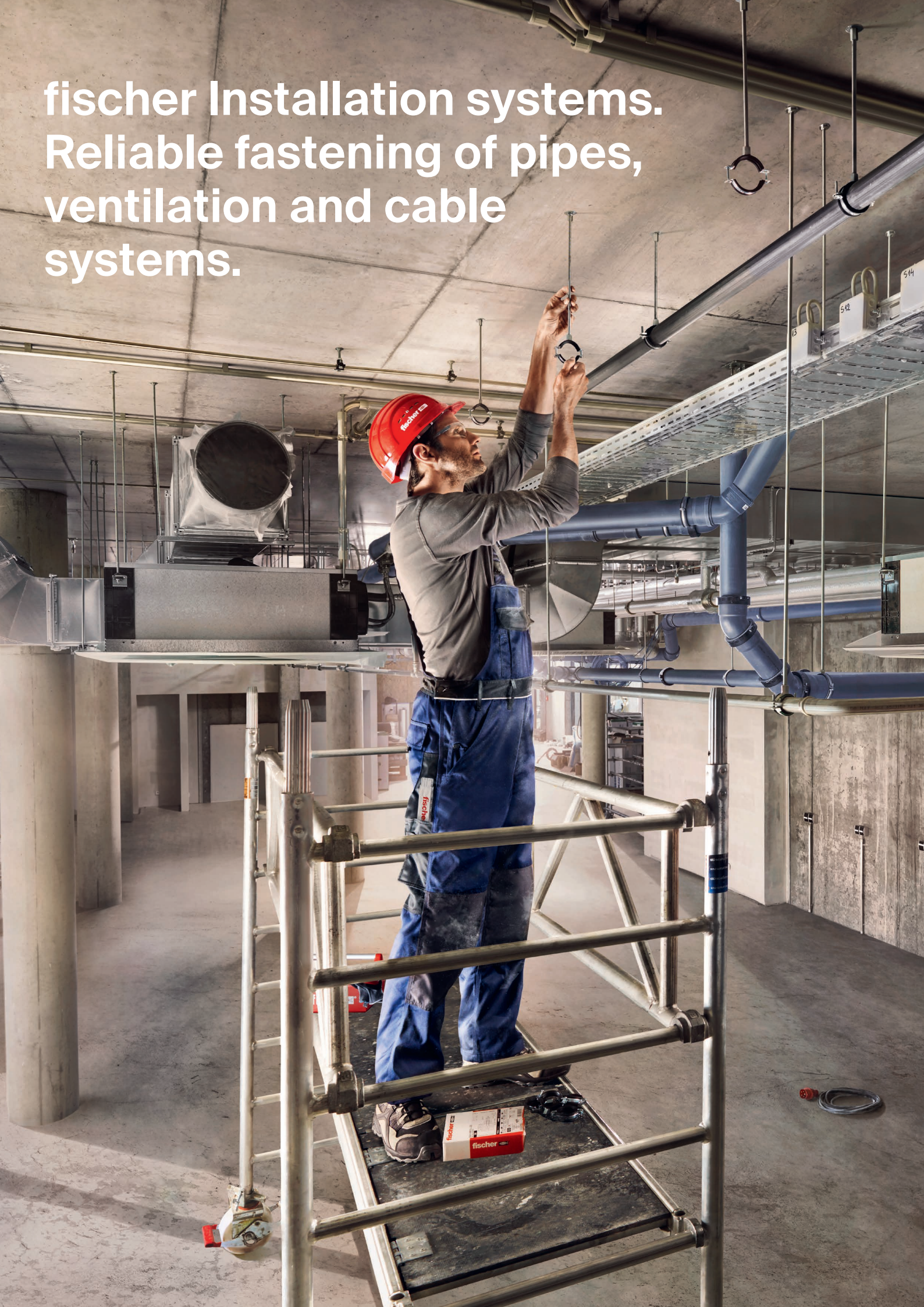
- The FLS cutting tool for the three FLS channel sizes guarantees the most economical type of channel cutting, including length measurement by the integrated 1m-measuring unit.
- Simple burr-free cutting instead of sawing the channel profile to avoid the complex and time consuming reworking of the edges.
- The cutting process avoids falling metal chips as during the sawing process for a dirt free workplace.
- The manual cutting tool, which is always ready for use, allows an almost noiseless use.
- Due to the profile-shaped openings in the cutting tool, incorrect use is permanently avoided.



The variable channel system. Flexibility in the system.



fischer Installation systems.
Reliable fastening of pipes,
ventilation and cable
systems.



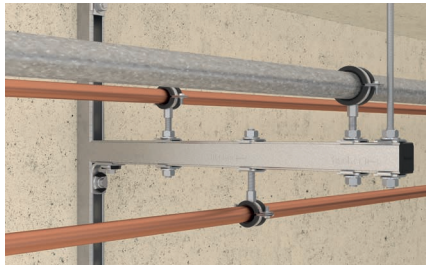
Applications

SF Clix 31



Channel fastening on the floor

MW 90° Clix



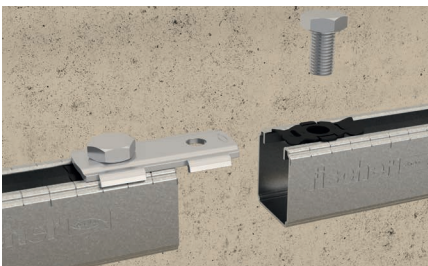
Channel construction as bracket

FLS light channel, EMS 31



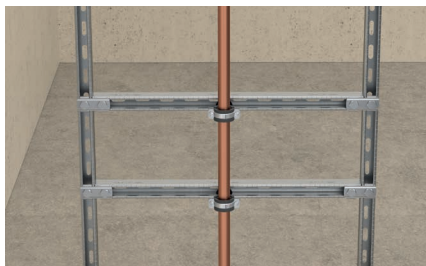
Ventilation duct fastening with suspended channel

FSM Clix P



Channel extension with rail connector

SV 31



Rack with two levels

FSM Clix M



Horizontal pipeline on frame construction

HK 31



Vertical pipe mounting on both sides

FHS Clix



Pipe fastening on light channel

ALK



Cable duct on cantilever arm

Assortment

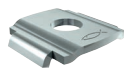
Light channel system



ALK



WS 31/45°



HK 31



FHS Clix



MWU 90°



MW 90°



EMS 31

Item	Art.-No.	Sales unit [pcs]
Cantilever arm ALK 17-200	538738	10
Cantilever arm ALK 17-300	538739	10
Cantilever arm ALK 30-200	538740	10
Cantilever arm ALK 30-300	538741	10
Cantilever arm ALK 30-450	538742	10
Cantilever arm ALK 37-300	538743	10
Cantilever arm ALK 37-450	538744	10
Cantilever arm ALK 37-600	538745	5
Angle brace WS 31/45°	538749	10
Channel washer HK 31 8,5	538663	50
Channel washer HK 31 10,5	538664	50
T-head bolt FHS Clix 8 x 30	538653	100
T-head bolt FHS Clix 8 x 40	538654	100
T-head bolt FHS Clix 8 x 60	538655	100
T-head bolt FHS Clix 8 x 80	538656	50
T-head bolt FHS Clix 8 x 100	538657	50
T-head bolt FHS Clix 8 x 140	545834	50
T-head bolt FHS Clix 8 x 190	545835	100
T-head bolt FHS Clix 10 x 30	538658	100
T-head bolt FHS Clix 10 x 40	538659	100
T-head bolt FHS Clix 10 x 60	538660	50
T-head bolt FHS Clix 10 x 80	545836	50
T-head bolt FHS Clix 10 x 100	538661	50
Angle bracket MWU 90° (8,5)	538667	25
Angle bracket MW 90°	538668	50
Rubber inlay EMS 31	538752	1

Light channel system



Item	Art.-No.	Sales unit [pcs]
Channel FLS 17/1.0 - 2 m	538753	10
Channel FLS 17/1.0 - 3 m	538754	8
Channel FLS 30/1.0 - 2 m	538755	10
Channel FLS 30/1.0 - 3 m	538756	8
Channel FLS 37/1.2 - 2 m	538757	10
Channel FLS 37/1.2 - 3 m	538758	8
Channel FLS 37/1.2 - 6 m	538759	1
Cover cap AK 17	538746	100
Cover cap AK 30	538747	100
Cover cap AK 37	538748	100
Channel connector SV 31	538641	25
Sliding channel nut FSM Clix P 6	538643	50
Sliding channel nut FSM Clix P 8	538647	50
Sliding channel nut FSM Clix P 10	538649	50
Sliding channel nut FSM Clix M 6	538650	50
Sliding channel nut FSM Clix M 8	538651	50
Sliding channel nut FSM Clix M 10	538652	50
Saddle flange SF Clix 31	538665	10
Angle bracket MW Clix 90°	538666	10
Beam clamp TKR 31	538751	25
FLS Cutting tool	543965	1

Accessories and loads

Recommended items



Item	Art.-No.	Sales unit [pcs]
FAZ II 8/10 ¹⁾	94871	50
FAZ II 10/10 ¹⁾	94981	50
FBS II 8x55 5/- USTX ¹⁾	536851	50
FBS II 8x70 20/5 USTX ¹⁾	536852	50
FBS 6x40/5 LP ¹⁾	523911	100
FBS 6x80/25 LP ¹⁾	66948	100
FBS 6x35 M8/M10 I	523912	100
FBS 6x55 M8/M10 I	66950	100
EA II M8x25 ¹⁾	532231	100
EA II M10x25 ¹⁾	532232	50
SXR 10x60 FUS ¹⁾	46329	100

¹⁾ Other dimensions on request.

Load table FLS Clix elements (applies to all elements with hammer head plate FHS, FSM, MW and SF)

Type	Max. recommended tension load for FLS 17 / 1.0 and FLS 30 / 1.0	Max. recommended tension load for FLS 37 / 1.2	Max. recommended shear load	Tightening torque
	N_{empf} [kN]	N_{empf} [kN]	V_{empf} [kN]	T_{inst} [Nm]
FHS Clix / FSM Clix M	1,5	2,0	1,0	8,0
FSM Clix P, HK, MW, MWU, SF, SV	1,5	2,0	1,0	10,0

fischer Service

Our 360° service to you

From software solutions, to training, to personal consulting. As a reliable partner, we are always happy to assist you with words and deeds.



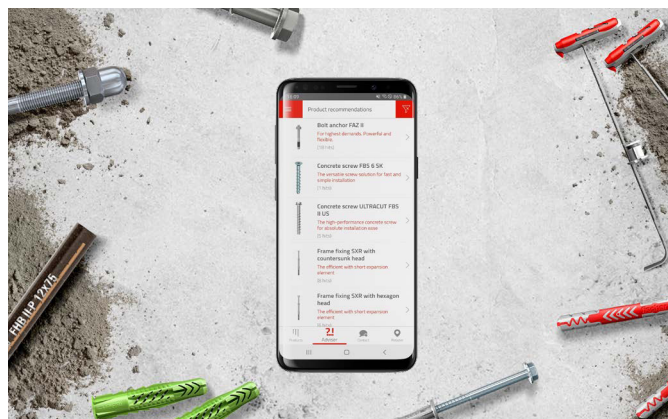
Design Software fischer FIXPERIENCE

The fischer design Software FIXPERIENCE gives you safe and reliable support in measuring your projects whether you are a planner, structural engineer or craftsman. *Measuring has never been so simple!*



Professional App. The mobile fixing expert for the craftsman.

With the fischer Professional App, you can quickly and easily obtain information about products, find your nearest dealer or find the right solution for your application. Download now from the Apple or Google Play Store.



Dealer:

www.fischer-international.com



fischer stands for

Fixing Systems
Automotive
fischertechnik
Consulting
LNT Automation

fischerwerke GmbH & Co. KG
Klaus-Fischer-Straße 1 · 72178 Waldachtal
Germany
T +49 7443 12 - 0
www.fischer-international.com · info@fischer.de
