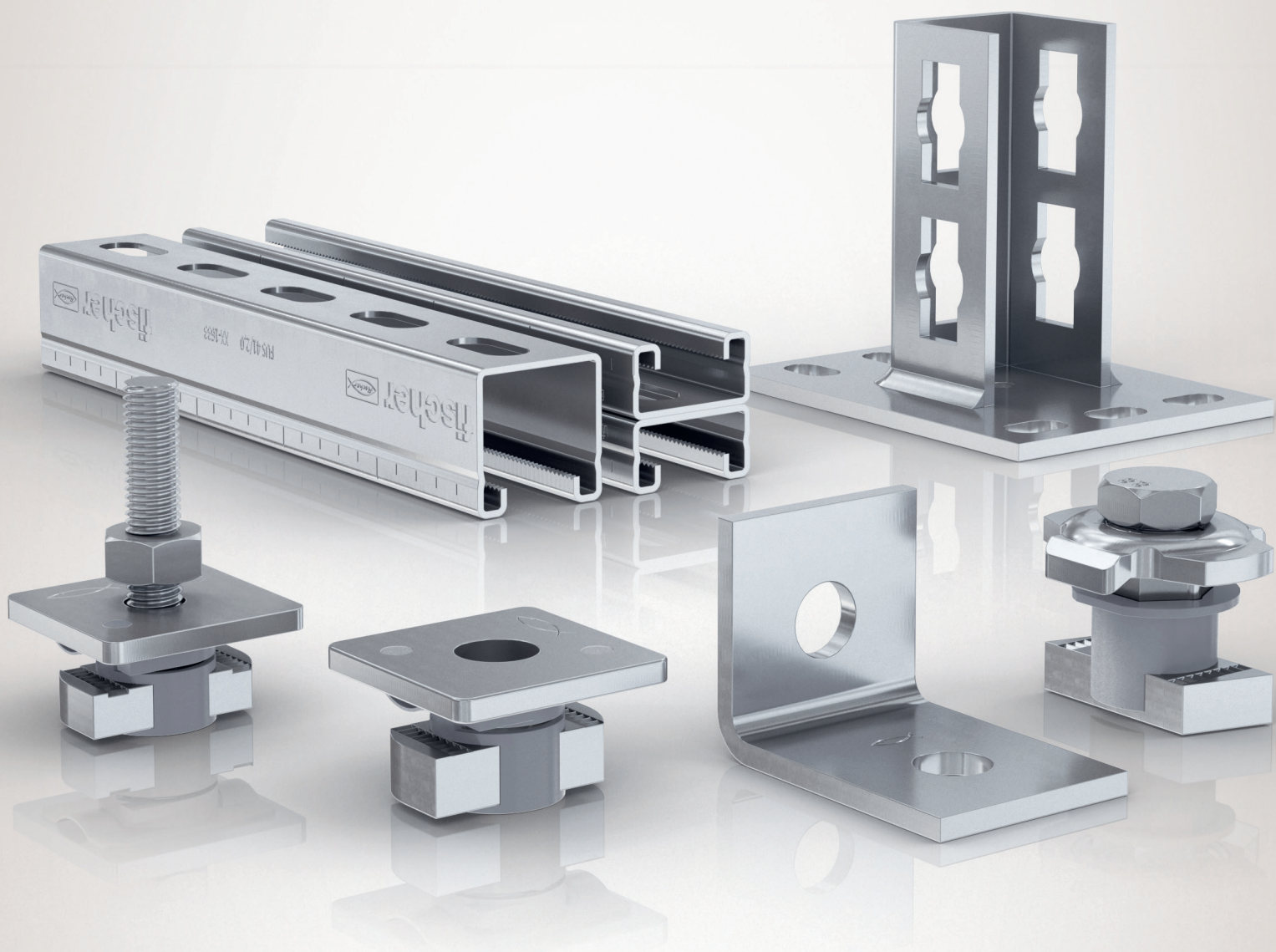
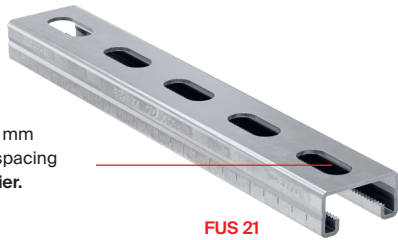


Channel system FUS.
The universal and
comprehensive system.



Mounting channels FUS. For light- and medium-weight loads.

Slot sized 30 x 14 mm
with 50 mm grid spacing
makes fixing easier.



FUS 21

Standard channel width of 41 mm permits
the use of all construction and connection
elements.



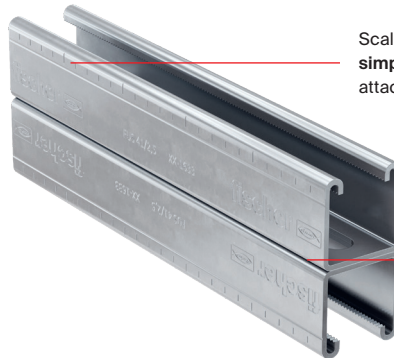
FUS 21 D

Different mounting channel material
thicknesses of 1.5 mm, 2.0 mm and
2.5 mm guarantee optimum load
capacity.



FUS 41

Scaling on the centimeter grid
simplifies the positioning of
attachments and cutting.



FUS 41 D

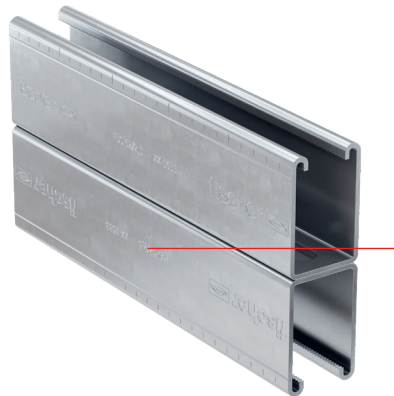
Welded double channel joint
galvanized with spot welding
in the center and hot-dip
galvanized with longitudinal
weld spots at the side for ef-
fective corrosion protection.

Teeth in the mounting
channel for a secure
hold of the connection.



FUS 62

Labeling with code and
batch number creates
reliability during use.



FUS 62 D

Approvals

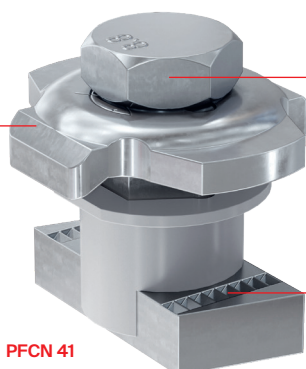


ETA 21-0140
Products for installation systems
of technical building equipment

Push-through connector system PFCN 41.

Push, turn, ready. Clever installation.

The special shape of the washer holds the attachment safely and firmly in position.



PFCN 41

The high-strength screw guarantees secure mounting.

The teeth on the channel and channel nut provide a positive-fit and thus extremely powerful and secure connection.

Functioning:

- Put channel and attachment together.
- Push the connector through and pre-mount by turning the connector through 90° – readjusting through slight pressure if necessary.
- Fix the construction in place securely by tightening the hexagon screw.

Your advantages at a glance

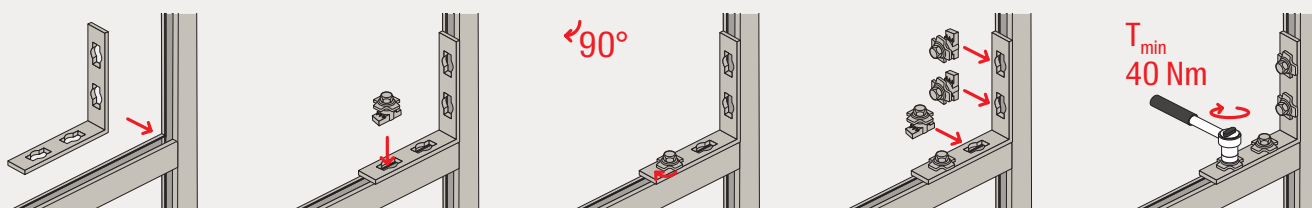
- The clever design combines screw, washer, channel nut and spring mechanism in one component.
- The push-through connector can be combined with all FUS channels and is thus extremely versatile to use.
- The spring mechanism allows convenient positioning and adjustment of the attachments through pressure and pushing.
- The positive and non-positive toothings between the channel and the push-through connector allows high shearing forces and thus a reliable connection.
- The convenient push-through principle saves time and assembly effort – even during disassembly.

Corrosion protection:

In addition to the standard galvanised version, the range is also available in hot-dip galvanised and stainless steel versions.

An alternative corrosion coating is used for the hot-dip galvanised version of the construction elements and PFCN 41, the properties are described below:

- Special coating with unusually good corrosion protection effect against environmental influences outdoors as well as in corrosive indoor environments.
- Resistant in accordance with DIN EN ISO 9227 salt spray fog test > 480 h.
- Optimum function of the components with unlimited thread running thanks to optimised layer thicknesses.
- Suitable for our FUS hot-dip galvanized channel system.

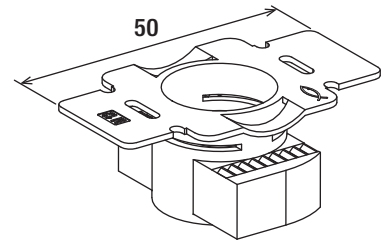


Screw system with FCN Clix P. Position and connect with screw. Simple installation.



FCN Clix P

The teeth on the channel nut provide a **secure hold in the FUS channel**.



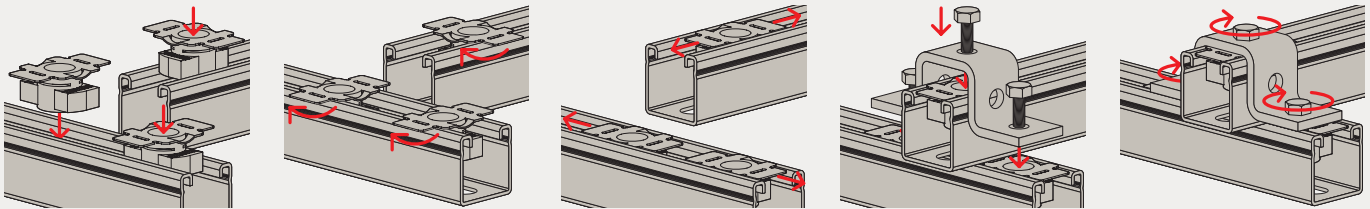
The 50 mm grid dimension of the channel nut and the construction elements simplifies installation long-term.

Functioning:

- Insert connector in the channel and fix in place by turning it through 90°.
- The required position in the channel can be adjusted by pressing and pushing.
- Following secure positioning, the attachment is installed.

Your advantages at a glance

- Installation by rotating 90° enables installation possible later in channels that have already been fitted.
- The spring effect of the plastic clasps guarantees simple and precise positioning in the channel.
- The design of the channel nut allows quick and easy setting in the channel.
- The flat plastic mount of the FCN Clix P with its wings offers a good hold and allows convenient installation of the attachments.



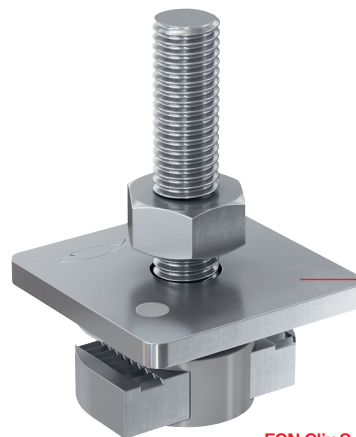
Connection elements.

Pre-mount then adjust. Simple pipe clamp connection.



FCN Clix M

The flat design offers a **good hold** and makes the **convenient installation** of threaded bolts and locknuts possible.



FCN Clix S

The hammer-head nut design allows for **quick and easy setting** in the channel.

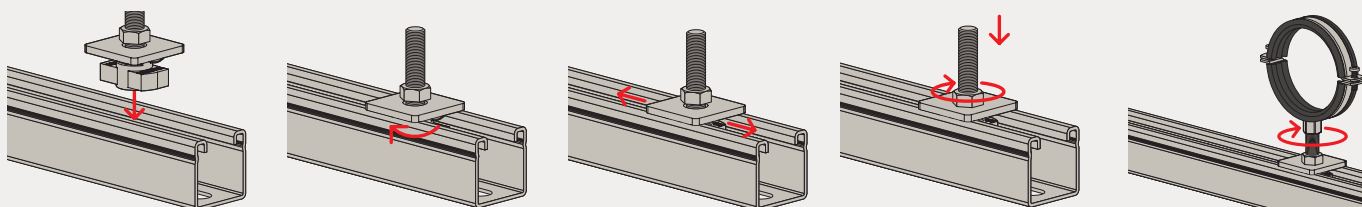
Functioning:

- Insert connector in the channel and fix in place by turning it through 90°.
- The required position in the channel can be adjusted by pressing and pushing.
- Following secure positioning, threaded bolts and locknuts are installed.

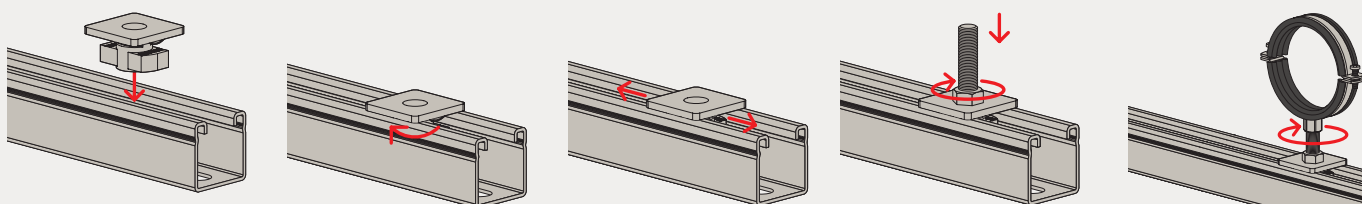
Your advantages at a glance

- Installation by rotating 90° enables installation possible later in channels that have already been fitted.
- The spring effect of the plastic clasps guarantee simple and precise positioning in the channel.
- The teeth on the sliding nut provide a secure hold in the FUS channel.
- The pre-assembled stud screw of the FCN Clix S allows the pipe clamp to be mounted directly on the rail without additional stud screws.

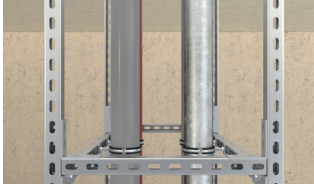
FCN Clix S



FCN Clix M



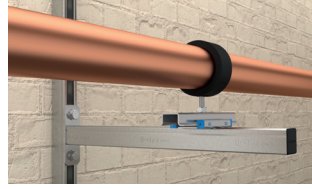
Applications



Vertical raceway: PFUF D



Frame structure: PWK, PFCN



Console on FUS mounting channel



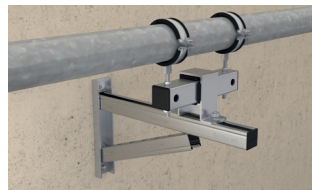
Console on wall with strut:
FCA cantilever arm, FCN Clix M



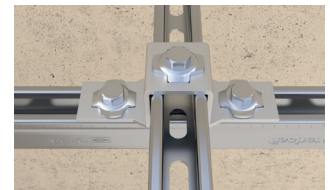
Console with variable support:
FCA 41D, PVB



Console on channel with support:
PUWS, PSAE



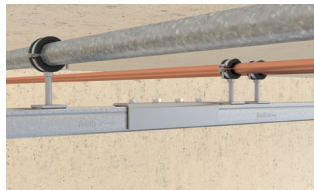
Solid console: FCAM



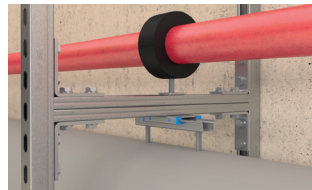
Channel cross joint: PFUF, PFCN



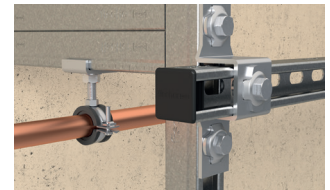
Horizontal pipe route: PSF



Horizontal mounting channel:
PFUF OC, FCN Clix M



Frame structure:
PFAF, FUS mounting channel



Supported frame construction:
PFUF, PFCN, HK, FCN Clix P PFUF,
PFCN, HK, FCN Clix P



Directly mounted mounting channel:
HK, FUS mounting channel



Wall connector frame structure:
SF82, FUS 41D



Mounting channel on steel girder:
TKR, FUS mounting channel



Installation grid structure:
FVS 4 II, UHRS



Installation grid structure:
FUS Double channels, FVS 4 II, FUH

Assortment

FUS mounting channels



FUS 21

FUS 41

FUS 62

FUS 21D

FUS 41D

FUS 62D

Item	Art.-No.	hdg	A2		Length [m]	Sales unit [pcs]
	gvz		A2	A4		
FUS 21/1,5 - 2 m	545117	-	-	-	2	1
FUS 21/1,5 - 3 m	545118	-	-	-	3	1
FUS 21/1,5 - 6 m	545119	-	-	-	6	1
FUS 21/2,0 - 2 m	40391	-	504466	504472	2	1
FUS 21/2,0 - 3 m	97660	537653	-	-	3	1
FUS 21/2,0 - 6 m	97661	-	542735	542738	6	1
FUS 21/2,5 - 2 m	92867	-	-	-	2	1
FUS 21/2,5 - 3 m	77349	-	-	-	3	1
FUS 21/2,5 - 6 m	77541	-	-	-	6	1
FUS 41/1,5 - 2 m	545120	-	-	-	2	1
FUS 41/1,5 - 3 m	545126	-	-	-	3	1
FUS 41/1,5 - 6 m	545127	-	-	-	6	1
FUS 41/2,0 - 2 m	40390	-	504468	504474	2	1
FUS 41/2,0 - 3 m	97658	517426	-	-	3	1
FUS 41/2,0 - 6 m	97659	537656	542736	542739	6	1
FUS 41/2,5 - 2 m	92295	-	504470	504475	2	1
FUS 41/2,5 - 3 m	77347	-	-	-	3	1
FUS 41/2,5 - 6 m	77537	537658	542737	542740	6	1
FUS 62/2,5 - 3 m		517427	-	-	3	1
FUS 62/2,5 - 6 m	504457	517428	-	557765	6	1
FUS 21D/2,0 - 3 m	504458	537659	-	-	3	1
FUS 21D/2,0 - 6 m	535531	537661	-	-	6	1
FUS 41D/2,5 - 6 m	504459	537662	-	562655	6	1
FUS 62D/2,5 - 6 m	504460	537663	-	-	6	1

FUS cantilever arms



Item	Art.-No. gvz	hdg	A4	Sales unit [pcs]
FCA 21-200	537207	-	-	1
FCA 21-300	537208	-	-	1
FCA 21-450	537209	-	-	1
FCA 21D-300	536978	-	-	1
FCA 21D-450	536979	-	-	1
FCA 21D-600	536980	-	-	1
FCA 300	77359	517411	505487	1
FCA 450	77361	517412	505488	1
FCA 600	77363	517413	505489	1
FCA 750	77365	517414	-	1
FCA 41/2,0-300	559915	-	-	1
FCA 41/2,0-450	559916	-	-	1
FCA 41/2,0-600	559917	-	-	1
FCA 41/2,0-750	559918	-	-	1
FCA 41/2,0-1000	559919	-	-	1
FCA 41D/2,0-750	559920	-	-	1
FCA 41D/2,0-1000	559921	-	-	1
FCA41D-1000	504319	538017	-	1
FCA41D-750	504317	538016	-	1
FCA62-1000	504315	538015	-	1
FCAM-300	504477	538018	-	1
FCAM-400	504479	538019	-	1
FCAM-500	504480	538020	-	1
FCAM-600	504482	538021	-	1
FCAM-700	505460	538022	-	1

FUS cover caps and rubber channel insert



Item	Art.-No. Polyéthylène/Profile rubber	Sales unit [pcs]
FEC 21 B	77357	100
FEC 41 B	77355	100
FEC 62 B	505551	100
EMS 41 - 6m	550806	1

FUS construction elements – channel-to-channel connection

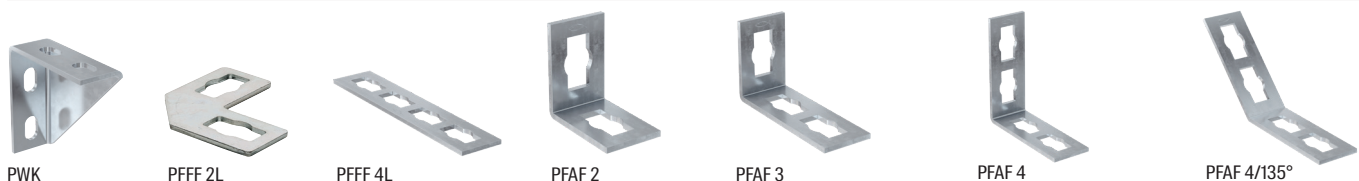
Push-through system



Item	Art.-No.			Sales unit [pcs]
	gvz	hdg	A4	
PSF 41 - Saddle flange	533740	542715	562848	10
PSF 82 - Saddle flange	533741	542716	562849	5
PSF 124 - Saddle flange	533742	542718	-	5
PSFQ 41 - Saddle flange	535266	542723	562847	10
PUWS 2x2 - Universal bracket	533733	542709	562833	10
PUWS 2x2/135° - Universal bracket	533731	542708	562835	10
PUWS 4x4 - Universal bracket	533734	542710	562834	8

FUS construction elements – channel-to-channel connection

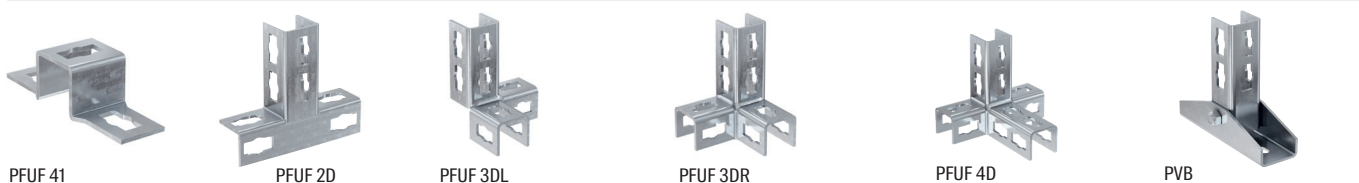
Push-through system



Item	Art.-No.			Sales unit [pcs]
	gvz	hdg	A4	
PWK 200/200 - Angle bracket	533744	542720	562837	15
PFFF 2L - Bracket	533745	542721	562827	20
PFFF 4L - Bracket	535268	542725	562828	25
PFAF 2 - Bracket	533735	542711	562829	25
PFAF 3 - Bracket	533736	542712	562830	25
PFAF 4 - Bracket	535267	542724	562832	25
PFAF 4/135° - Bracket	533737	542713	562831	20

FUS construction elements – channel-to-channel connection

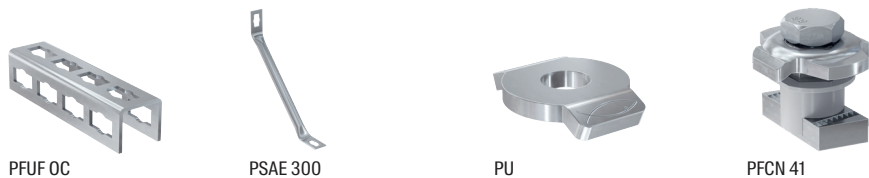
Push-through system



Item	Art.-No.			Sales unit [pcs]
	gvz	hdg	A4	
PFUF 41 - Bracket	533738	542714	562836	25
PFUF 2D - Bracket	563148	563149	563150	10
PFUF 3DL - Bracket	535273	542730	562843	10
PFUF 3DR - Bracket	535274	542731	562844	10
PFUF 4D - Bracket	535275	542732	562845	10
PVB - Variable bracket	534960	542722	562838	5

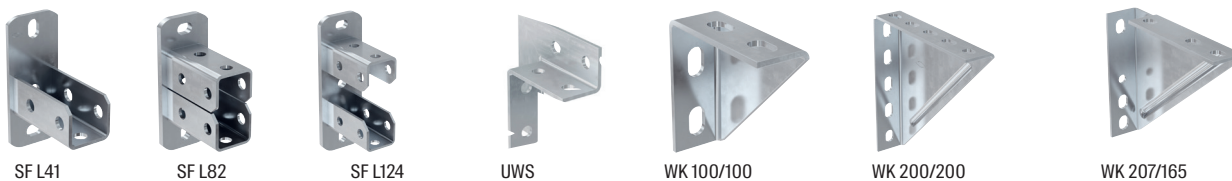
Assortment

FUS construction elements – channel-to-channel connection
Push-through system



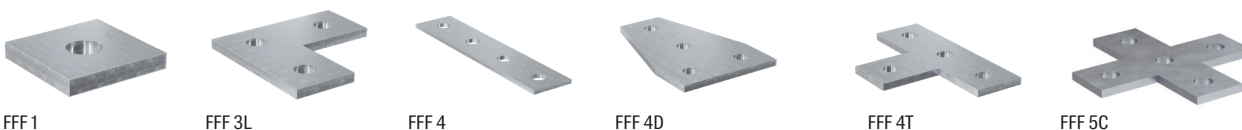
Item	Art.-No.		A4	Sales unit [pcs]
	gvz	hdg		
PFUF OC - Channel connector	533743	542719	562846	6
PSAE 300 - Bracing elements	535269	542726	562839	10
PSAE 500 - Bracing elements	535270	542727	562840	10
PU 10,5 - Washer	535271	542728	562841	50
PU 12,5 - Washer	535272	542729	562842	50
PFCN 41 - Push-through connector	533739	542733	562662	50

FUS construction elements – channel-to-channel connection
Screw system with channel nut



Item	Art.-No.		A4	Sales unit [pcs]
	gvz	hdg		
SF L 41 - Saddle flange	504355	538125	504522	10
SF L 82 - Saddle flange	504357	538126	-	5
SF L 124 - Saddle flange	504358	517421	-	5
UWS - Mounting bracket	49479	538115	-	10
WK 100/100 - Angle bracket	63559	538117	-	5
WK 200/200 - Angle bracket	79570	538118	-	5
WK 207/165 - Angle bracket	79571	-	-	6

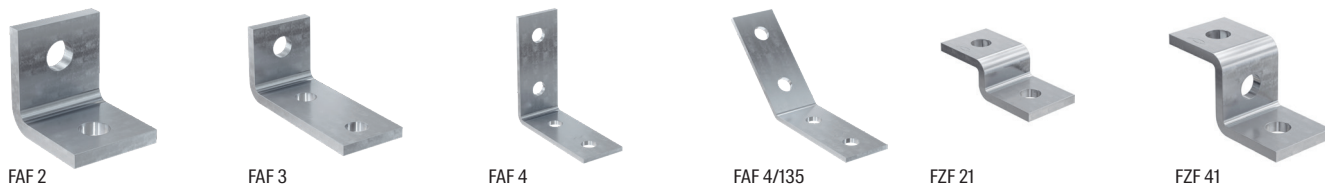
FUS construction elements – channel-to-channel connection
Screw system with channel nut



Item	Art.-No.		Sales unit [pcs]
	gvz	hdg	
FFF 1 - Bracket	547500	547506	25
FFF 3L - Bracket	504498	537581	25
FFF 4 - Bracket	547501	547507	25
FFF 4D - Bracket	504368	537584	25
FFF 4T - Bracket	504500	537583	25
FFF 5C - Bracket	553073	553075	20

FUS construction elements – channel-to-channel connection

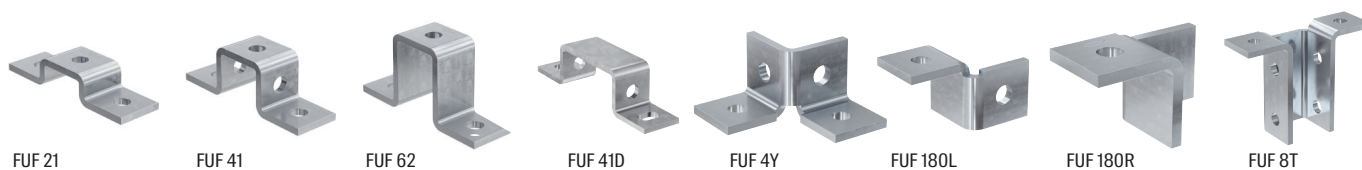
Screw system with channel nut



Item	Art.-No.			Sales unit [pcs]
	gvz	hdg	A4	
FAF 2 - Bracket	547502	547508	547512	25
FAF 3 - Bracket	547503	547509	-	25
FAF 4 - Bracket	547504	547510	547513	25
FAF 4/135 - Bracket	547505	547511	547514	25
FZF 21 - Bracket	504375	-	-	25
FZF 41 - Bracket	504515	-	-	25

FUS construction elements – channel-to-channel connection

Screw system with channel nut



Item	Art.-No.			Sales unit [pcs]
	gvz	hdg	A4	
FUF 21 - Flanges	504376	537588	-	25
FUF 41 - Flanges	504377	537589	-	25
FUF 62 - Flanges	553076	553083	-	15
FUF 41D - Flanges	-	550742	-	1
FUF 4Y - Flanges	504378	537585	-	20
FUF 180L - Flanges	504379	537586	-	20
FUF 180R - Flanges	504383	537587	-	20
FUF 8T - Flanges	504387	537590	-	10

FUS construction elements – channel-to-channel connection

Screw system with channel nut

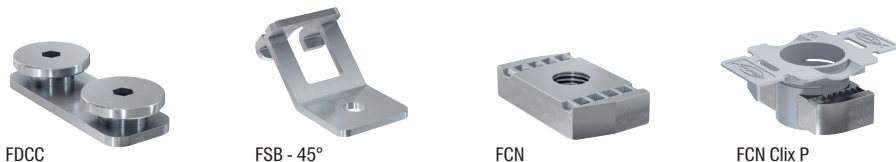


Item	Art.-No.			Sales unit [pcs]
	gvz	hdg	A4	
VB - Variable bracket	545650	545771	545651	5
FUF OC 41 - Channel connector	504517	517415	-	20
FUF OC 62 - Channel connector	504518	537591	-	10

Assortment

FUS construction elements – channel-to-channel connection

Screw system with channel nut



Item	Art.-No.			Sales unit [pcs]
	gvz	hdg	A4	
FDCC - Channel connector	546148	557278	557376	100
FSB 45° - Threaded rod bracket	71269	538120	-	20
FCN 6 - Channel nut	77405	-	-	100
FCN 8 - Channel nut	77407	-	-	100
FCN 10 - Channel nut	77409	-	-	100
FCN 12 - Channel nut	77411	-	-	100
FCN 16 - Channel nut	561773	561774	562664	100
FCN CLIX P 6 - Connector	559757	-	-	50
FCN CLIX P 8 - Connector	559758	559765	559754	50
FCN CLIX P 10 - Connector	559759	559766	559755	50
FCN CLIX P 12 - Connector	559760	559767	559756	50

FUS construction elements – channel-to-channel connection

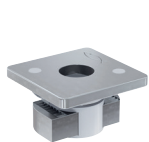
Elements for suspension and fixing



Item	Art.-No.			Sales unit [pcs]
	gvz	hdg	A4	
HK 41/10,5 - Channel washer	547492	547495	-	50
HK 41/12,5 - Channel washer	547493	547496	559750	50
HK 41/17 - Channel washer	547494	561254	562665	50
TKR 21-42 - Beam clamp	504363	538122	559751	20
TKR 82 - Beam clamp	504366	538123	562666	20
TKR 124 - Beam clamp	504367	538124	-	10
FUH 13 - Universal hinge	543065	-	-	6
FVS 3 II - Cross connector	543060	-	-	8
FVS 4 II - Cross connector	543063	-	-	5

Connection element for pipe clamps etc.

Connectors for universal use



FCN CLIX M



FCN Clix S



FCSN

Item	Art.-No.			Sales unit [pcs]
	gvz	hdg	A4	
FCN CLIX M 6 - Connector	559761	-	-	50
FCN CLIX M 8 - Connector	559762	559768	559752	50
FCN CLIX M 10 - Connector	559763	559769	559753	50
FCN CLIX M 12 - Connector	559764	559770	562663	50
FCN Clix S 8x30	567462	-	-	50
FCN Clix S 8x40	567463	-	-	50
FCN Clix S 8x60	567464	-	-	50
FCN Clix S 8x80	567465	-	-	50
FCN Clix S 8x100	567466	-	-	50
FCN Clix S 10x30	567467	-	-	50
FCN Clix S 10x40	567468	-	-	50
FCN Clix S 10x60	567469	-	-	50
FCN Clix S 10x100	567470	-	-	50
FCN Clix S 12x40	567471	-	-	50
FCN Clix S 12x60	567472	-	-	50
FCSN M8x30 - T-head bolt	92960	-	-	50
FCSN M8x40 - T-head bolt	92961	-	-	50
FCSN M8x50 - T-head bolt	93354	-	-	50
FCSN M8x60 - T-head bolt	93355	-	-	50
FCSN M10x30 - T-head bolt	93360	-	-	50
FCSN M10x40 - T-head bolt	93361	-	-	50
FCSN M10x50 - T-head bolt	93362	-	-	50
FCSN M10x60 - T-head bolt	93363	-	-	50
FCSN M12x30 - T-head bolt	93366	-	-	50
FCSN M12x40 - T-head bolt	93367	-	-	50

Loads

Connection channel to mounting channel							
	Max. recommended static load	Max. recommended static load	Max. recommended static load	Max. recommended shear load	Max. recommended shear load	Max. recommended shear load	Tightening torque
	FUS 1,5mm	FUS 2,0mm	FUS 2,5mm	FUS 1,5mm	FUS 2,0mm	FUS 2,5mm	Screw quality ≥ 8.8
	N_{rec} [kN]	N_{rec} [kN]	N_{rec} [kN]	V_{rec} [kN]	V_{rec} [kN]	V_{rec} [kN]	T_{inst} [Nm]
PFCN 41	4,0	5,0	7,0	4,0	4,5	5,0	40
FCN Clix P6	2,5	3,0	3,0	1,0	1,0	1,0	10
FCN Clix P8	3,0	4,0	4,0	1,5	2,0	2,0	20
FCN Clix P10	4,0	5,0	8,0	2,0	2,5	2,5	40
FCN Clix P12	4,0	5,0	8,0	2,0	2,5	2,5	50
FCN 6	2,5	3,0	3,0	1,0	1,0	1,0	10
FCN 8	3,0	4,0	4,0	1,5	2,0	2,0	20
FCN 10	4,0	5,0	8,0	2,0	2,5	2,5	40
FCN 12	4,0	5,0	8,0	2,0	2,5	2,5	50
FCN 16	4,0	5,0	8,0	2,0	3,0	3,0	50

Connection pipe clamp to mounting channel				
	Max. recommended static load	Max. recommended static load	Max. recommended static load	Tightening torque
	FUS 1,5mm	FUS 2,0mm	FUS 2,5mm	Screw quality ≥ 4.6
	N_{rec} [kN]	N_{rec} [kN]	N_{rec} [kN]	T_{inst} [Nm]
FCN Clix M6	2,5	3,0	3,0	5
FCN Clix M8	3,0	4,0	4,0	10
FCN Clix M10	4,0	5,0	8,0	15
FCN Clix M12	4,0	5,0	8,0	20
FCN Clix S 8	3,0	4,0	4,0	10
FCN Clix S 10	4,0	5,0	8,0	15
FCN Clix S 12	4,0	5,0	8,0	20
FCSN M8	–	4,0	4,0	5
FCSN M10	–	4,0	5,0	10
FCSN M12	–	4,0	5,0	10

Solid channel system FMS. The efficient fixing solution for heavy-duty installations.



Dealer:

www.fischer-international.com



fischer stands for

Fixing Systems
Automotive
fischertechnik
Consulting
Electronic Solutions

fischerwerke GmbH & Co. KG
Klaus-Fischer-Straße 1 · 72178 Waldachtal
Germany
T +49 7443 12 - 0
www.fischer-international.com · info@fischer.de
