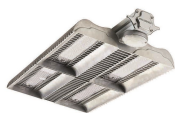


SylBay LED - 1-10V with PIR
SYLBAY LED 4000K 37KLM WIDE 1-10V PIR
0039276



Product features

- Specification industrial high bay luminaire, robust and durable, slim design, high output and efficiency, lightweight, aluminium housing with shatter-resistant polycarbonate lens optic, 39,613 lumens, 276W, 144lm/W, 4000K, 2100mA (x2), CRI 80, wide beam optic, 1-10V dimmable, integral PIR sensor with daylight/occupancy detection, IP66, IK08, (LxWxH) 665x375x105mm, 3 step MacAdam ellipse, 8.9kg, aluminium finish, Class 1, 220-240V, integrated LED, energy class: A++, A+, A.

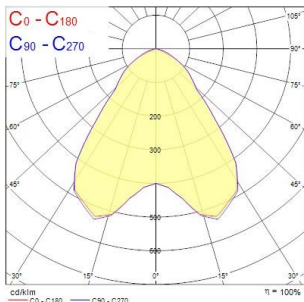
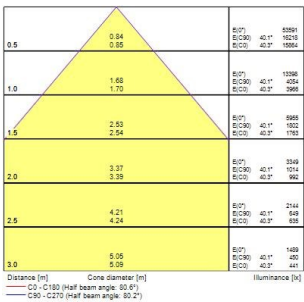
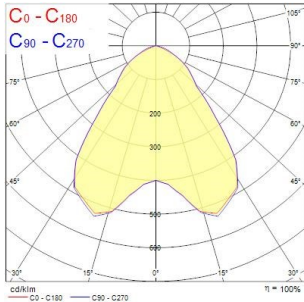
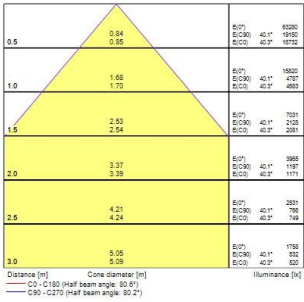


PRODUCT OVERVIEW

Product name	SYLBAY LED 4000K 37KLM WIDE 1-10V PIR
Technology	LED
Housing	Aluminium
Mount	Ceiling surface mounting
Fixture rating	Enclosed
Environment	Internal
General application	Logistics & Industry
ETIM Class	EC001716
E-number FI	4306927
Warranty	5 years
Useful luminous flux (Fuse)	39613
Fixture luminous flux (lm)	39613
Luminaire efficacy (lm/W)	144
LOR (%)	100
Correlated colour temperature (k)	4000
Light colour	Neutral White
CRI (Ra)	80
Colour Consistency (SDCM)	3
Beam Angle (°)	80
Photobiological Risk Group	RG1
Total power consumption (W)	276
Electrical protection	Class I
Control gear type	Electronic ballast
Control gear mounting	Integral
Dimming method	1-10V (Analogue)
Housing colour	Silver
IP rating	IP66
IK rating	IK08
Product EAN number	5410288392769

PHOTOMETRY

SylBay LED - 1-10V with PIR
SYLBAY LED 4000K 37KLM WIDE 1-10V PIR
0039276



TECHNICAL DRAWINGS

