

**MEM Single-lever basin mixer - Brushed Durabrass (23kt Gold)**

MEM

29 210 782 Product version from 3/10/2014 to 3/18/2019

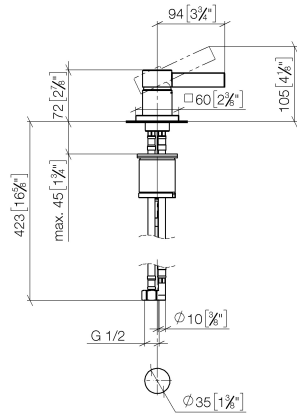
- hole diameter 35 mm
- rosette 60 x 60 mm
- 3x screw-in M 10 x 1 pressure hose, leak-tested



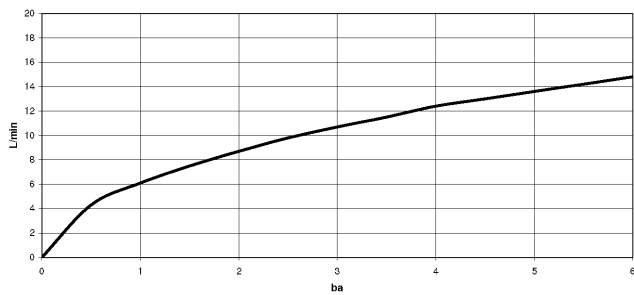
	Brushed Durabrass (23kt Gold)	29 210 782-28
	Chrome	29 210 782-00
	Brushed Platinum	29 210 782-06
	Platinum	29 210 782-08
	Dark Chrome	29 210 782-19
	Brushed Light Gold (PVD)	29 210 782-27
	Brushed Gold (PVD)	29 210 782-37
	Brushed Bronze (PVD)	29 210 782-42
	Brushed Dark Bronze (PVD)	29 210 782-43
	Brushed Champagne (22kt Gold)	29 210 782-46
	Champagne (22kt Gold)	29 210 782-47
	Brushed Dark Platinum	29 210 782-99

29 210 782 Product version from 3/10/2014 to 3/18/2019

mm [inches]



**Flow rate chart**



**Codes & Standards**

DIN 4109

Executive Order  
no. 1007

ISO 3822

Ü-Zeichen



## MEM Single-lever basin mixer - Brushed Durabronz (23kt Gold)

MEM

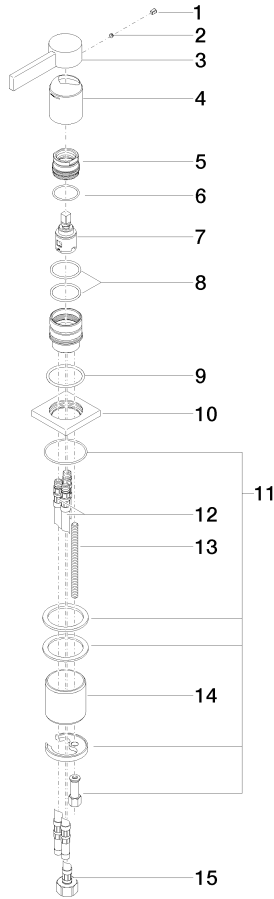
29 210 782 Product version from 3/10/2014 to 3/18/2019

### Certificates and sustainability

LGA_28	GDV_0400	EPD-DOR-20230287 -IBA1-EN Environmental.prod uct-declarat
--------	----------	--------------------------------------------------------------------

29 210 782 Product version from 3/10/2014 to 3/18/2019

Parts for other finishes can be found here: Chrome



**Spare parts list**

No.	Item Number	Name	Quantity used	Delivery time
10	09 27 78 040-28	Rosette 60 x 60 x 9 x Ø 35 mm - Brushed Durabron (23kt Gold)	1.00	40
12	04 30 04 016 00 90	High pressure hose M10x1 x 420 mm -	2.00	-
Spare part can no longer be ordered, please order the replacement item				
	0430041040090	High pressure hose M10x1 x 3/8" x 420 mm -		
15	04 30 04 019 00 90	High pressure hose with sleeve nut M10x1 x 1/2" x 420 mm -	1.00	14
6	09 14 10 137 90	O-Ring EPDM 70 29,0 x 2,0 mm -	1.00	14
8	09 14 10 192 90	O-Ring 35,0 x 2,5 mm -	2.00	14
14	09 18 40 079 90	Sleeve Ø 50 x 50 mm -	1.00	14
3	09 20 78 057-28	Handle Lever 24 x 41 x 96 mm - Brushed Durabron (23kt Gold)	1.00	40
9	09 14 10 050 90	O-Ring 41,0 x 3,0 mm -	1.00	14
11	04 30 11 038 02 90	Mounting with O-ring Ø49 x 2mm Ø 52 x 1,5 mm -	1.00	14
7	90 15 05 042 00 90	Cartridge Ø 25 x 52 mm -	1.00	14
1	09 31 20 017 90	Plug Masking plug -	1.00	-
Spare part can no longer be ordered, please order the replacement item				
	09312010990	Plug -		
5	09 24 04 288 90	Mounting Nut Ø 34 x 26,5 mm -	1.00	14
4	09 11 02 289-28	Cover Ø 41 x 53 mm - Brushed Durabron (23kt Gold)	1.00	40
13	09 31 11 012 90	Mounting Threaded bolt M8 x110 mm -	1.00	14
2	90 31 11 063 00 90	Mounting Threaded pin with hexagon socket with cup point M5 x 4 mm -	1.00	14