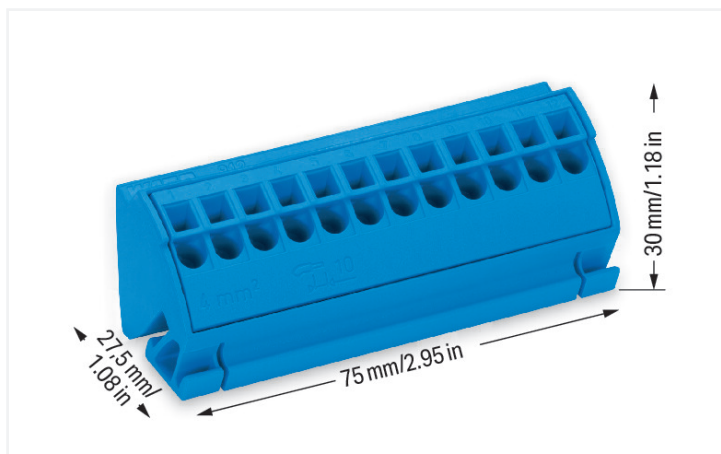


## Data Sheet | Item Number: 812-104

Busbar terminal block; for (10 x 3) mm busbars; without push-buttons; Push-in CAGE CLAMP®; 4,00 mm²; blue

<https://www.wago.com/812-104>



Color: ■ blue

Common potential terminal block, 812 Series, operating tool

Quick and easy connections are guaranteed with this common potential terminal block (item number 812-104). Conductors should only be connected to this common potential terminal block if their strip length is 11 mm. This product incorporates conductor terminals and utilizes Push-in CAGE CLAMP®. Push-in CAGE CLAMP® connection technology is ideal for connecting all conductor types. It allows direct insertion of both solid and fine-stranded conductors with ferrules without needing to use any tools—all thanks to its pluggable design. The item's dimensions are (75 x 30 x 27.5) mm (width x height x depth). Depending on the type of conductor, this common potential terminal block is ideal for conductor cross sections ranging from 0.5 mm² to 4 mm².

### Electrical data

#### Ratings per IEC/EN

|   |   |
|---|---|
| Nominal voltage (III/3)                   | 1000 V  |
| Rated impulse withstand voltage (III / 3) | 6 kV  |
| Rated current                             | 96 A  |
| Legend (ratings)                          | (III / 3) ≙ Overvoltage category III / Pollution degree 3 |

#### Ratings per IEC/EN – Notes

|                      |  |
|----------------------|--|
| Rated current (note) | Current carrying capacity: With a maximum total current of 96 A, the clamping units of the busbar terminal block can be loaded with the rated current of the conductor cross-sections approved. This only applies when (10 x 3) mm busbars are used. |
|----------------------|--|

### General information

|                  |                    |
|------------------|--------------------|
| Wiring direction | Front-entry wiring |
|------------------|--------------------|

### Connection Data

|                            |    |
|----------------------------|----|
| Clamping units             | 12 |
| Total number of potentials | 1  |
| Number of levels           | 1  |

#### Connection 1

|                                      |                               |
|--------------------------------------|-------------------------------|
| Connection technology                | Push-in CAGE CLAMP®           |
| Actuation type                       | Operating tool                |
| Connectable conductor materials      | Copper                        |
| Solid conductor                      | 0.5 ... 4 mm² / 20 ... 12 AWG |
| Solid conductor; push-in termination | 0.5 ... 4 mm² / 20 ... 12 AWG |
| Stranded conductor                   | 0.5 ... 4 mm² / 20 ... 12 AWG |
| Fine-stranded conductor              | 0.5 ... 4 mm² / 20 ... 12 AWG |
| Strip length                         | 11 mm / 0.43 inches           |

### Connection 1

|                  |                    |
|------------------|--------------------|
| Wiring direction | Front-entry wiring |
|------------------|--------------------|

### Physical data

|        |                        |
|--------|------------------------|
| Width  | 75 mm / 2.953 inches   |
| Height | 30 mm / 1.181 inches   |
| Depth  | 27.5 mm / 1.083 inches |

### Material data

|                                    |  |
|------------------------------------|--|
| Note (material data)               | <a href="#">Information on material specifications can be found here</a> |
| Color                              | blue   |
| Material group                     | I  |
| Insulation material (main housing) | Polyamide (PA66)   |
| Flammability class per UL94        | V0   |
| Fire load                          | 0.712 MJ   |
| Weight                             | 35.7 g   |

### Environmental requirements

|                                  |                |
|----------------------------------|----------------|
| Continuous operating temperature | -35 ... +85 °C |
|----------------------------------|----------------|

### Commercial data

|                       |                         |
|-----------------------|-------------------------|
| Product Group         | 12 (Matrix Patch Board) |
| PU (SPU)              | 10 pcs                  |
| Packaging type        | Box                     |
| Country of origin     | PL                      |
| GTIN                  | 4044918253291           |
| Customs tariff number | 85369010000             |

### Product Classification

|             |                      |
|-------------|----------------------|
| UNSPSC      | 39121410             |
| eCl@ss 10.0 | 27-14-11-46          |
| eCl@ss 9.0  | 27-14-11-46          |
| ETIM 9.0    | EC000001             |
| ETIM 10.0   | EC000001             |
| ECCN        | NO US CLASSIFICATION |

### Environmental Product Compliance

|                        |                         |
|------------------------|-------------------------|
| RoHS Compliance Status | Compliant, No Exemption |
|------------------------|-------------------------|

Approvals / Certificates

General approvals



| Approval                              | Standard      | Certificate Name                    |
|---------------------------------------|---------------|-------------------------------------|
| CCA<br>DEKRA Certification B.V.       | EN 60947      | NTR NL-7153                         |
| CSA<br>CSA Group                      | C22.2 No. 158 | 2131504                             |
| KEMA/KEUR<br>DEKRA Certification B.V. | EN 60947      | 2160584.49                          |
| UL<br>Underwriters Laboratories Inc.  | UL 1059       | UL-US-<br>L45172-6187154-31109002-1 |

Declarations of conformity and manufacturer's declarations

| Approval  | Standard | Certificate Name |
|---|----------|------------------|
| EU-Declaration of Confor-<br>mity<br>WAGO GmbH & Co. KG | -        | -                |
| UK-Declaration of Confor-<br>mity<br>WAGO GmbH & Co. KG | -        | -                |

Downloads

Environmental Product Compliance

Compliance Search

Environmental Product  
Compliance 812-104



Documentation

Bid Text

|         |            |                  |  |
|---------|------------|------------------|--|
| 812-104 | 18.07.2019 | xml<br>4.01 KB   |  |
| 812-104 | 18.07.2019 | docx<br>15.24 KB |  |

CAD/CAE-Data

CAD data

2D/3D Models 812-104



CAE data

EPLAN Data Portal  
812-104



WSCAD Universe  
812-104



ZUKEN Portal 812-104



## 1 Compatible Products

### 1.1 Optional Accessories

#### 1.1.1 Ferrule

##### 1.1.1.1 Ferrule



**Item No.: 216-110**

Ferrule; Sleeve for 16 mm<sup>2</sup> / AWG 6; un-insulated; electro-tin plated; brown metallic

#### 1.1.2 N-busbar

##### 1.1.2.1 Busbar

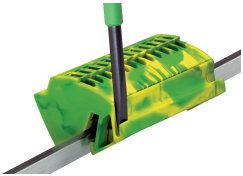


**Item No.: 210-133**

Busbar; tin-plated; 1000 mm long; Cu 10 mm x 3 mm; white

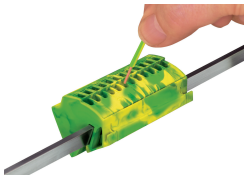
## Installation Notes

### Installation

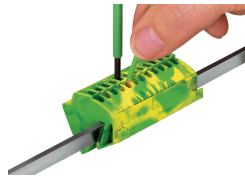


Unlock right and left positions to remove the ground busbar terminal block. Then pull up the block from the busbar.

## Conductor termination



**Conductor termination (4 mm<sup>2</sup>/12 AWG):**  
With Push-in CAGE CLAMP®, solid conductors can be terminated by simply pushing them into the 12 x 4 mm<sup>2</sup> busbar terminal block, significantly reducing wiring time.



**Conductor removal (4 mm<sup>2</sup>/12 AWG and 16 mm<sup>2</sup>/6 AWG):**  
Open the clamping unit using an operating tool.