



---

# Table of contents

<b>003</b>	<b>Important information</b>
<b>004</b>	<b>Disassembly of the motorized change-over switch</b>
<b>005</b>	<b>Disassembly of the switch-disconnector</b>
<b>006</b>	<b>Disassembly of the bridge assembly</b>
<b>007</b>	<b>Disassembly of the set of slides</b>
<b>008</b>	<b>Disassembly of the handle</b>
<b>009–010</b>	<b>Component list</b>
<b>011</b>	<b>Recycling information in accordance with the WEEE</b>

## Important information

This document shows the disassembly process of OTM40-125\_C motorized change-over switches. Accessories, such as shafts, clamps, shrouds, neutral links and auxiliary contacts are not included. **Note! This document is for recycling purposes only.**

### Safety Notes

Before starting the disassembly process it is mandatory to put the motorized change-over switch in open position.

Disassembly of motorized change-over switches must be performed by qualified and skilled personnel in the electrical field (IEV 195-04-01: person with relevant education and experience to enable him or her to perceive risks and to avoid hazards which electricity can create) and having a detailed knowledge of motorized change-over switches.

Disassembly must be done in an ergonomic workspace which can ensure the protection of the person doing the disassembling.

Applicable national legislation and international standards in force at the time of the disassembly of the motorized change-over switch must be taken into account in addition to the prescriptions illustrated in this document.

ABB declines any responsibility for injury to people or damage to property resulting from a failure to comply with the instructions set out in this document and with any applicable safety standard.

### Personal Protective Equipment (PPE)

When doing the disassembling following safety Personal Protective Equipment (PPE) must be worn:

Glasses



Gloves



Safety shoes



Protective clothes



### Tools

The disassembly process requires the use of tools (e.g. screwdriver, torx key, pliers). Tools to be used are specified inside each phase of the disassembly process.

### Disassembly process

For each phase of the disassembly process the following information is provided:

- Part/parts to be disassembled (title of the phase)
- Tools to be used
- Description of actions to be performed
- Pictures showing actions to be performed
- List, quantity and picture of disassembled parts with an indication about separate treatment (when applicable)
- In case of potential hazards signal below is reported:



# Disassembly of the motorized change-over switch

## Phase 1,2,3 – Motor operator, handle and fourth pole\*

1. Remove the 4 fixing pieces with the help of a flat screwdriver or pliers and separate the switch-disconnectors from the motor operator.

2. Remove the handle by pushing the clip (marked with red) to the left and pulling the handle up.

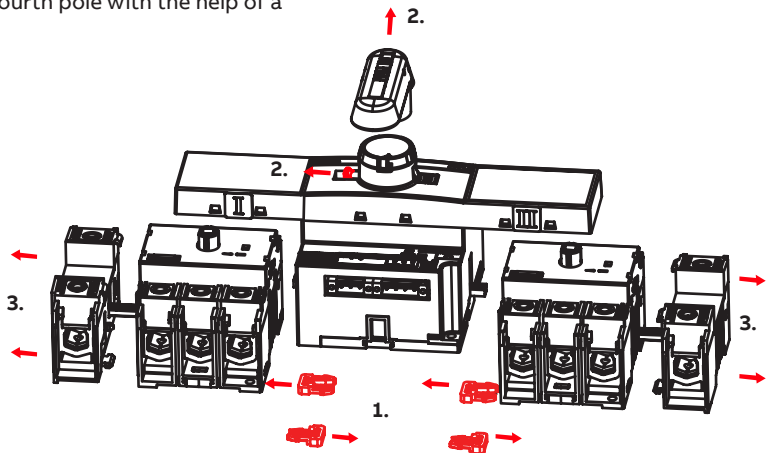
(3. Remove the fourth pole with the help of a screwdriver.\*)

### Tools

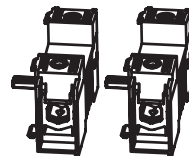
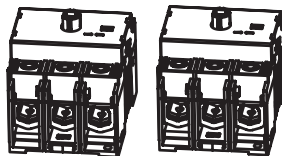
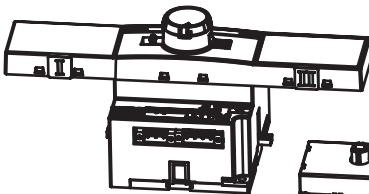
Flat screwdriver



Pliers



### Disassembled parts



\*Fourth pole only in 4-pole products.

- 1 handle
- 1 motor operator
- 2 switch-disconnectors
- 4 fixing pieces
- (2 fourth poles\*)

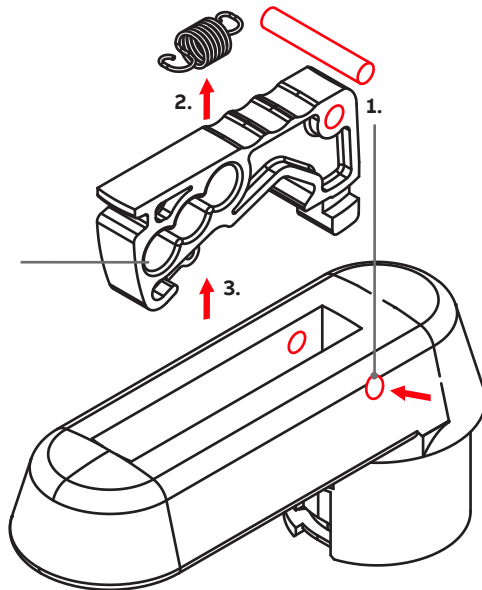
# Disassembly of the handle

## Phase 1,2,3 – Locking bolt, draw spring and slotted plug

1. Remove locking bolt (marked with red) by pressing on it with a small screwdriver.

2. Remove the draw spring with the help of a screwdriver or pliers.

3. Remove the slotted plug.



### Tools

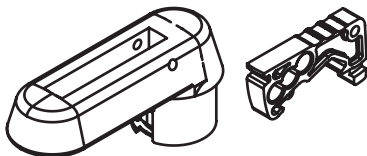
Flat screwdriver



Pliers



### Disassembled parts



- 1 handle
- 1 locking bolt
- 1 draw spring
- 1 slotted plug

# Component list

## Motorized switch-disconnector

Component name	Quantity	Material(s)	Weight (g/pc)
Switch-disconnector	2	See component list below	471
Motor operator	1	Assembly	757,0
Fixing piece	4	Polyamide	1,0
Handle	1	See component list below	35,0
Fourth pole*	2		110,0

\*Fourth pole only in 4-pole products.

## Handle

Component name	Quantity	Material(s)	Weight (g/pc)
Handle	1	Polyamide	31,0
Locking bolt	1	Polyamide	4,0
Draw spring	1	Steel	1,0
Slotted plug	1		1,0

---

## Recycling information in accordance with the WEEE

The product is marked with the wheelie bin symbol. It indicates that at the end of life the product should enter the recycling system.

You should dispose of it separately at an appropriate collection point and not place it in the normal waste stream.

The figure below shows the wheelie bin symbol indicating separate collection for electrical and electronic equipment (EEE).



The horizontal bar underneath the crossed-out wheelie bin indicates that the equipment has been manufactured after the Directive came into force in 2005.

The wheelie bin symbol is added to the type designation label of the product since 2017.



---

## Contact us

**ABB Oy**

P.O. Box 622  
FI-65101 Vaasa  
Finland

**[abb.com/lowvoltage](http://abb.com/lowvoltage)**