

13 800 809 Product version from 3/13/2017



- 190mm projection
- fixed spout
- circular, air-enriched flow
- hole diameter 37 mm
- rosette Ø 60 mm
- 1/2" connection
- plug-link mounting
- max. flow 5.7 l/min
- lead-free
- WRAS
- This product can help a building meet the requirements of Green Building Rating Systems, e.g. LEED®, BREEAM®, DGNB

For Touchfree control please order eSet Touchfree with temperature adjustment

	Brushed Dark Platinum	13 800 809-99
	Chrome	13 800 809-00
	Brushed Platinum	13 800 809-06
	Platinum	13 800 809-08
	Dark Chrome	13 800 809-19
	Brushed Durabronze (23kt Gold)	13 800 809-28
	Brushed Gold (PVD)	13 800 809-37
	Brushed Dark Brass (PVD)	13 800 809-39
	Brushed Bronze (PVD)	13 800 809-42
	Brushed Dark Bronze (PVD)	13 800 809-43
	Brushed Champagne (22kt Gold)	13 800 809-46
	Champagne (22kt Gold)	13 800 809-47

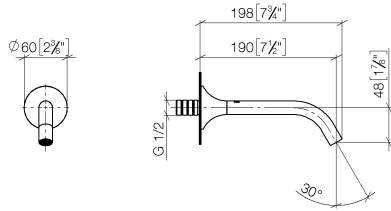
Recommended miscellaneous



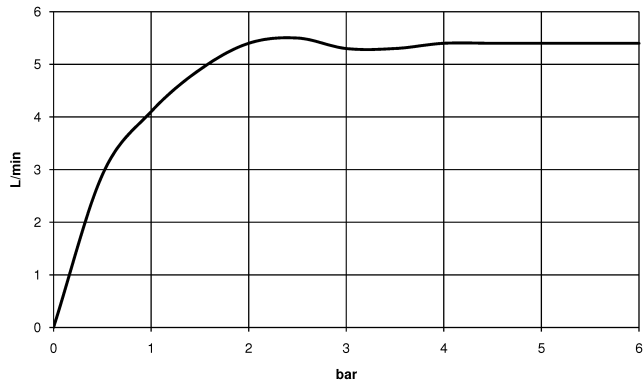
- Concealed wall elbow -** 35 085 970 90
- min. recess depth 90 mm
  - max. recess depth 163 mm

13 800 809 Product version from 3/13/2017

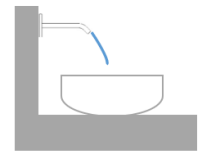
mm [inches]



Flow rate chart



Trajectory diagram



Codes & Standards

DIN 4109

ISO 3822

Scottish Water  
Byelaws

UK Water Supply  
Regulations

Ü-Zeichen



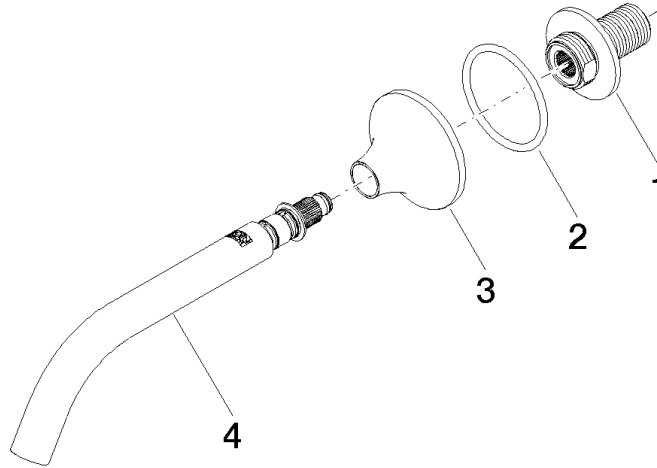
## VAIA Wall-mounted basin spout without pop-up waste - Brushed Dark Platinum

VAIA

13 800 809 Product version from 3/13/2017

### Certificates and sustainability

WRAS_2306	LGA_29	EPD-DOR-20230287 -IBA1-EN Environmental.prod uct-declarat
-----------	--------	--



### Spare parts list

No.	Item Number	Name	Quantity used	Delivery time
1	09 24 03 269 90	Nipple Ø 46 x 48,50 mm -	1.00	14
2	09 14 10 084 90	O-Ring EPDM 70 48 x 3,5 mm -	1.00	14
3	09 27 80 011-99	Rosette for spout Ø 60 x 37 mm - Brushed Dark Platinum	1.00	40
4	90 28 22 310 00-99	Spout 190 mm, 5,68 l/min. - Brushed Dark Platinum	1.00	40