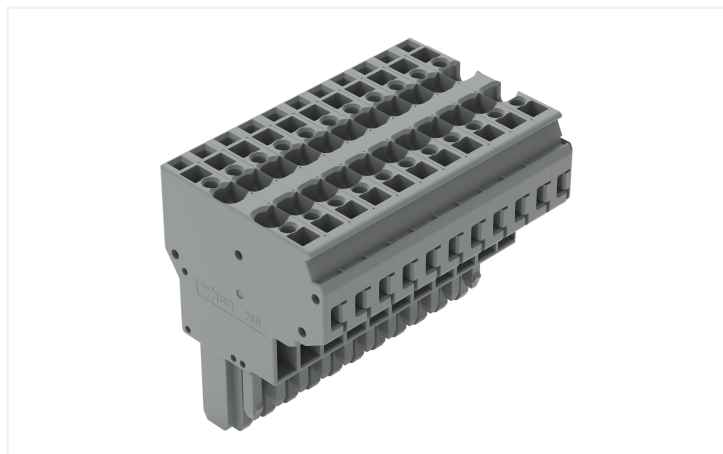


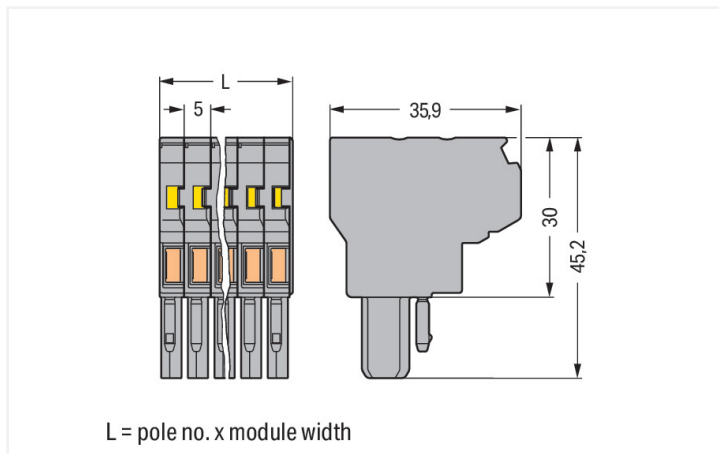
## Data Sheet | Item Number: 769-131

2-conductor female connector; CAGE CLAMP®; 4 mm<sup>2</sup>; Pin spacing 5 mm; 11-pole; coding finger; 4,00 mm<sup>2</sup>; gray

<https://www.wago.com/769-131>



Color: ■ gray



Dimensions in mm

### Female connector, 769 Series, CAGE CLAMP®

This female connector (item number 769-131) is designed for seamless electrical installations. Strip lengths must be between 8 and 9 mm when connecting conductors to this female connector. Pluggable rail-mount terminal blocks are hugely popular in switchgear and control systems, for example, in railroad technology. They combine the best of rail-mount terminal blocks and connectors to create the perfect solution. Variable wiring systems make pre-assembly easy, which saves both time and money in production, installation, operation, and maintenance. This product incorporates conductor terminals and utilizes CAGE CLAMP®. Our CAGE CLAMP® connection provides a proven and maintenance-free way to connect all types of conductors. You do not need to prepare the conductor in any way, such as crimping ferrules. Dimensions: (55 x 45.2 x 35.9) mm (width x height x depth). This female connector is suitable for conductor cross sections ranging from 0.08 mm<sup>2</sup> to 4 mm<sup>2</sup>.

This female connector/socket is operated with an operating tool.

### Notes

#### Safety Information

According to EN 61984, pluggable connectors without current interrupting capacity must not be mated or unmated when live or under load.

#### Safety information 2

Staggered jumpers cannot be installed in terminal blocks when using 2-conductor female plugs.

### Electrical data

| Rated per                       | IEC/EN 61984 |     |    |
|---------------------------------|--------------|-----|----|
| Overvoltage category            | III          | III | II |
| Pollution degree                | 3            | 2   | 2  |
| Nominal voltage                 | 500 V        | -   | -  |
| Rated impulse withstand voltage | 6 kV         | -   | -  |
| Rated current                   | 32 A         | -   | -  |

### General information

Wiring direction Front-entry wiring

## Connection Data

|                            |    |                                 |  |
|----------------------------|----|---------------------------------|--|
| Clamping units             | 22 | <b>Connection 1</b>             |  |
| Total number of potentials | 11 | Connection technology           | CAGE CLAMP®                                |
|                            |    | Actuation type                  | Operating tool                             |
|                            |    | Connectable conductor materials | Copper                                     |
|                            |    | Nominal cross-section           | 4 mm <sup>2</sup> / 12 AWG                 |
|                            |    | Solid conductor                 | 0.08 ... 4 mm <sup>2</sup> / 28 ... 12 AWG |
|                            |    | Fine-stranded conductor         | 0.08 ... 4 mm <sup>2</sup> / 28 ... 12 AWG |
|                            |    | Strip length                    | 8 ... 9 mm / 0.31 ... 0.35 inches          |
|                            |    | Pole number                     | 11   |
|                            |    | Wiring direction                | Front-entry wiring                         |

## Physical data

|              |                        |
|--------------|------------------------|
| Width        | 55 mm / 2.165 inches   |
| Height       | 45.2 mm / 1.78 inches  |
| Depth        | 35.9 mm / 1.413 inches |
| Module width | 5 mm / 0.197 inches    |

## Mechanical data

|  |              |
|--|--------------|
| Variable coding  | Yes          |
| Direct ground contact to DIN-rail/drilled hole/housing | No           |
| Marking level  | Side marking |
| Anti-rotation protection                               | Yes          |

## Plug-in connection

|                                      |                         |
|--------------------------------------|-------------------------|
| Contact type (pluggable connector)   | Female connector/socket |
| Connector (connection type)          | for conductor           |
| Mismating protection                 | No                      |
| Plugging without loss of pin spacing | Yes                     |

## Material data

|                                    |  |
|------------------------------------|--|
| Note (material data)               | <a href="#">Information on material specifications can be found here</a> |
| Color                              | gray   |
| Material group                     | I  |
| Insulation material (main housing) | Polyamide (PA66)   |
| Flammability class per UL94        | V0   |
| Fire load                          | 0.939 MJ   |
| Halogen-free                       | Yes  |
| Weight                             | 57.2 g   |

## Environmental requirements

|                                  |                 |
|----------------------------------|-----------------|
| Processing temperature           | -35 ... +85 °C  |
| Continuous operating temperature | -60 ... +105 °C |

### Commercial data

|                       |                   |
|-----------------------|-------------------|
| Product Group         | 18 (X-COM-System) |
| PU (SPU)              | 5 pcs             |
| Packaging type        | Box               |
| Country of origin     | PL                |
| GTIN                  | 4044918474269     |
| Customs tariff number | 85366990990       |

### Product Classification

|             |                      |
|-------------|----------------------|
| UNSPSC      | 39121409             |
| eCl@ss 10.0 | 27-14-11-06          |
| eCl@ss 9.0  | 27-14-11-06          |
| ETIM 9.0    | EC001284             |
| ETIM 10.0   | EC001284             |
| ECCN        | NO US CLASSIFICATION |

### Environmental Product Compliance

|                        |                         |
|------------------------|-------------------------|
| RoHS Compliance Status | Compliant, No Exemption |
|------------------------|-------------------------|

### Approvals / Certificates

#### General approvals



| Approval                                | Standard  | Certificate Name |
|---|-----------|------------------|
| CCA<br>DEKRA Certification B.V.         | EN 60947  | NTR NL-7626      |
| CCA<br>DEKRA Certification B.V.         | EN 61984  | 2190419.02       |
| CCA<br>DEKRA Certification B.V.         | IEC 61984 | NL-47799/A1      |
| CSA<br>CSA Group                        | C22.2     | 1101144          |
| KEMA/KEUR<br>DEKRA Certification B.V.   | EN 60947  | 2190419.01       |
| UL<br>Underwriters Laboratories<br>Inc. | UL 1059   | E45172           |
| UL<br>Underwriters Laboratories<br>Inc. | UL 1977   | E 45171          |

#### Declarations of conformity and manufacturer's declarations



| Approval  | Standard | Certificate Name |
|---|----------|------------------|
| EU-Declaration of Confor-<br>mity<br>WAGO GmbH & Co. KG | -        | -                |
| Railway<br>WAGO GmbH & Co. KG                           | -        | Z00004428.000    |

### Approvals for marine applications



| Approval                                | Standard | Certificate Name |
|---|----------|------------------|
| ABS<br>American Bureau of Ship-<br>ping | EN 60947 | 24-0152298-PDA   |

**Downloads**

**Environmental Product Compliance**

|  |  |  |   |
|--|--|--|---|
| Compliance Search                        |  |  |   |
| Environmental Product Compliance 769-131 |  |  | ↓ |

**Documentation**

|          |            |                 |   |
|----------|------------|-----------------|---|
| Bid Text |            |                 |   |
| 769-131  | 19.02.2019 | xml<br>3.21 KB  | ↓ |
| 769-131  | 04.10.2017 | doc<br>26.00 KB | ↓ |

**CAD/CAE-Data**

|                      |   |
|----------------------|---|
| CAD data             |   |
| 2D/3D Models 769-131 | ↓ |

|                           |   |
|---------------------------|---|
| CAE data                  |   |
| EPLAN Data Portal 769-131 | ↓ |
| WSCAD Universe 769-131    | ↓ |
| ZUKEN Portal 769-131      | ↓ |

**1 Compatible Products**

**1.1 Optional Accessories**

**1.1.1 Ferrule**

**1.1.1.1 Ferrule**

|  |   |  |  |
|--|---|--|--|
|  |   |  |  |
| <p><b>Item No.: 216-301</b><br/>                 Ferrule; Sleeve for 0.25 mm<sup>2</sup> / AWG 24; insulated; electro-tin plated; yellow</p> | <p><b>Item No.: 216-302</b><br/>                 Ferrule; Sleeve for 0.34 mm<sup>2</sup> / 22 AWG; insulated; electro-tin plated; light turquoise</p>   | <p><b>Item No.: 216-201</b><br/>                 Ferrule; Sleeve for 0.5 mm<sup>2</sup> / 20 AWG; insulated; electro-tin plated; electrolytic copper; acc. to DIN 46228, Part 4/09.90; white</p> | <p><b>Item No.: 216-101</b><br/>                 Ferrule; Sleeve for 0.5 mm<sup>2</sup> / AWG 22; un-insulated; electro-tin plated; silver-colored</p> |
|  |   |  |  |
| <p><b>Item No.: 216-202</b><br/>                 Ferrule; Sleeve for 0.75 mm<sup>2</sup> / 18 AWG; insulated; electro-tin plated; gray</p>   | <p><b>Item No.: 216-102</b><br/>                 Ferrule; Sleeve for 0.75 mm<sup>2</sup> / AWG 20; un-insulated; electro-tin plated; silver-colored</p> | <p><b>Item No.: 216-203</b><br/>                 Ferrule; Sleeve for 1 mm<sup>2</sup> / AWG 18; insulated; electro-tin plated; red</p>   | <p><b>Item No.: 216-103</b><br/>                 Ferrule; Sleeve for 1 mm<sup>2</sup> / AWG 18; un-insulated; electro-tin plated</p>                   |
|  |   |  |  |
| <p><b>Item No.: 216-204</b><br/>                 Ferrule; Sleeve for 1.5 mm<sup>2</sup> / AWG 16; insulated; electro-tin plated; black</p>   | <p><b>Item No.: 216-104</b><br/>                 Ferrule; Sleeve for 1.5 mm<sup>2</sup> / AWG 16; un-insulated; electro-tin plated; silver-colored</p>  | <p><b>Item No.: 216-206</b><br/>                 Ferrule; Sleeve for 2.5 mm<sup>2</sup> / AWG 14; insulated; electro-tin plated; blue</p>  |  |

## 1.1.2 Insulation stop

### 1.1.2.1 Insulation stop



**Item No.: 769-470**

Insulation stop; 0.08 - 0.2 mm<sup>2</sup> "s" (0.14 mm<sup>2</sup> "f-st"); 5 pieces/strip; white



**Item No.: 769-471**

Insulation stop; 0.25 - 0.5 mm<sup>2</sup>; 5 pieces/strip; light gray



**Item No.: 769-472**

Insulation stop; 0.75 - 1 mm<sup>2</sup>; 5 pieces/strip; dark gray

## 1.1.3 Jumper

### 1.1.3.1 Jumper



**Item No.: 280-402**

Jumper; insulated; gray



**Item No.: 780-452**

Staggered jumper; from 1 to 2; insulated; gray



**Item No.: 780-453**

Staggered jumper; from 1 to 3; insulated; gray



**Item No.: 780-454**

Staggered jumper; from 1 to 4; insulated; gray



**Item No.: 780-455**

Staggered jumper; from 1 to 5; insulated; gray



**Item No.: 780-456**

Staggered jumper; from 1 to 6; insulated; gray



**Item No.: 780-457**

Staggered jumper; from 1 to 7; insulated; gray



**Item No.: 780-458**

Staggered jumper; from 1 to 8; insulated; gray

## 1.1.4 Locking system

### 1.1.4.1 Locking system



**Item No.: 769-430**

Locking lever; for female connectors; 1 part; Pin spacing 5 mm; 2-pole; gray



**Item No.: 769-431**

Locking lever; for female connectors; 1 part; Pin spacing 5 mm; 2-pole; orange

## 1.1.5 Marking

### 1.1.5.1 Marker



**Item No.: 2009-145**

Mini-WSB Inline; for Smart Printer; 1700 pieces on roll; stretchable 5 - 5.2 mm; plain; snap-on type; white



**Item No.: 248-501**

Mini-WSB marking card; as card; not stretchable; plain; snap-on type; white

## 1.1.6 Protective warning marker

### 1.1.6.1 Cover



**Item No.: 280-415**

Protective warning marker; for 5 terminal blocks; with high-voltage symbol, black; yellow

## 1.1.7 Strain relief

### 1.1.7.1 Strain relief



**Item No.: 769-414**

Strain relief plate; for female and male connectors; 1 part; Pin spacing 5 mm; 10- to 15-pole; gray

## 1.1.8 Test and measurement

### 1.1.8.1 Testing accessories



**Item No.: 210-136**

Test plug; 2 mm Ø; with 500 mm cable; red

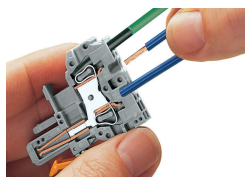
## Installation Notes



### 2-conductor female plugs

- Common signals from one subassembly to the other (bus structure)
- Can be used as a T-wire branch tap connection (e.g. for lighting wiring)
- Enable a higher number of connection possibilities

## Conductor termination



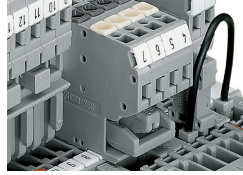
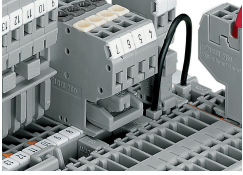
### CAGE CLAMP® connection

Female plug: Inserting/removing a conductor via operating tool.

Operation 90° to conductor is also possible.

With ferruled conductors, it is necessary to use a terminal block one size smaller than the conductor's nominal cross-section.

## Commoning



Commoning a 2-conductor female plug via staggered jumper and carrier terminal blocks via adjacent jumpers.

### Commoning options of female plugs:

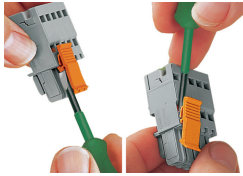
- After removal, commoned potentials still remain commoned
- Use of plug-in jumpers instead of additional wired jumpers
- Can be used as a "hardware" key for safety lockout
- Can also be used as a commoning jumper for sensor circuits or machine programming

## Coding



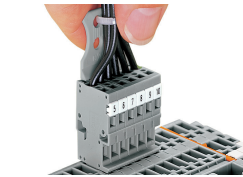
Coding a female plug by removing coding finger(s) via cutting tool. Do not remove the first and last coding fingers or use an additional locking lever.

## Locking system



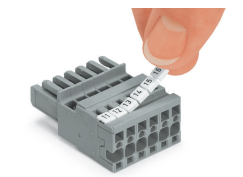
Locking/releasing a lever.

## Strain relief



Removing a female plug via conductor bundle provided with strain relief plate.

## Marking



Labeling a female plug with CAGE CLAMP® connection via Mini-WSB Quick Markers.

Subject to changes. Please also observe the further product documentation!

---

Current addresses can be found at: [www.wago.com](http://www.wago.com)