

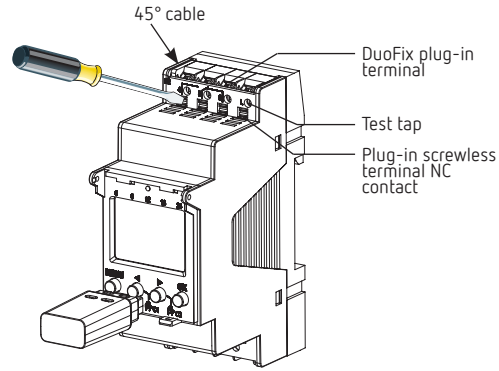
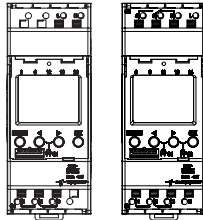
EN Time switch

TSDW1CO-1

Y7-196848

TSDW2CO-1

Y7-196849



1. Basic safety information

WARNING

Danger of death through electric shock or fire!

- Installation should only be carried out by a qualified electrician!

- The device is designed for installation on DIN top hat rails (in accordance with EN 60715)
- The device corresponds to type 1 STU in accordance with IEC/EN 60730-2-7

2. Proper use

- The time switch is used for lighting, ventilation and flushing applications etc.
- Only for use in closed, dry rooms

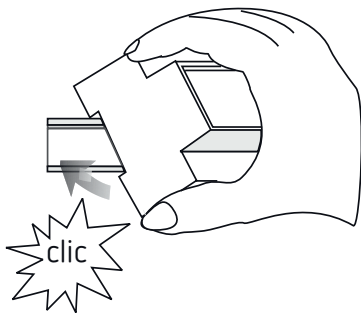
! Do not use on safety devices, e.g. escape route doors, fire safety equipment etc.



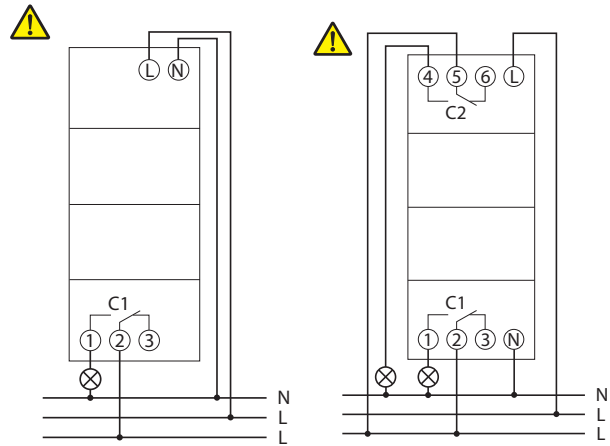
➤ www.eaton.com/recycling

3. Installation and connection

Mounting the time switch



- Mount on DIN top hat rails (as defined in EN 60715)
- Switched voltage-free
- Ensure device cannot be switched on
- Check absence of voltage
- Earth and bypass
- Cover or shield any adjacent live components



Connecting the cable

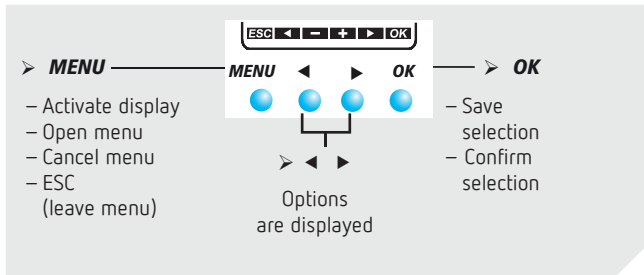
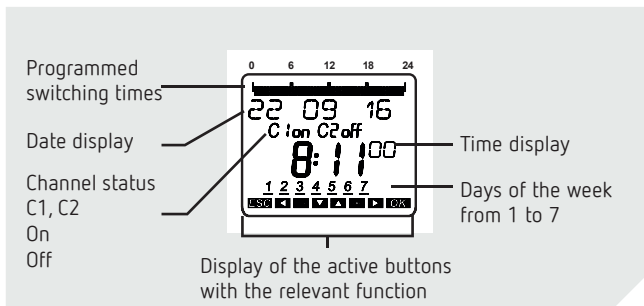
- Strip cable to 8 mm (max. 9)
- Insert cable in the open DuoFix plug-in terminal at 45°
- ① 2 cables per terminal position possible
- To open the DuoFix plug-in terminal, press screwdriver downwards

Disconnecting the cable

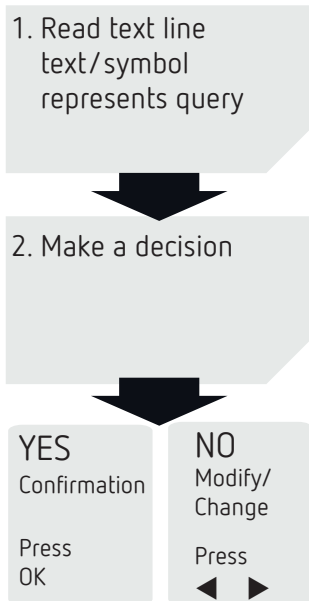
- Use the screwdriver to push the load line connection opener downwards

4. Device description

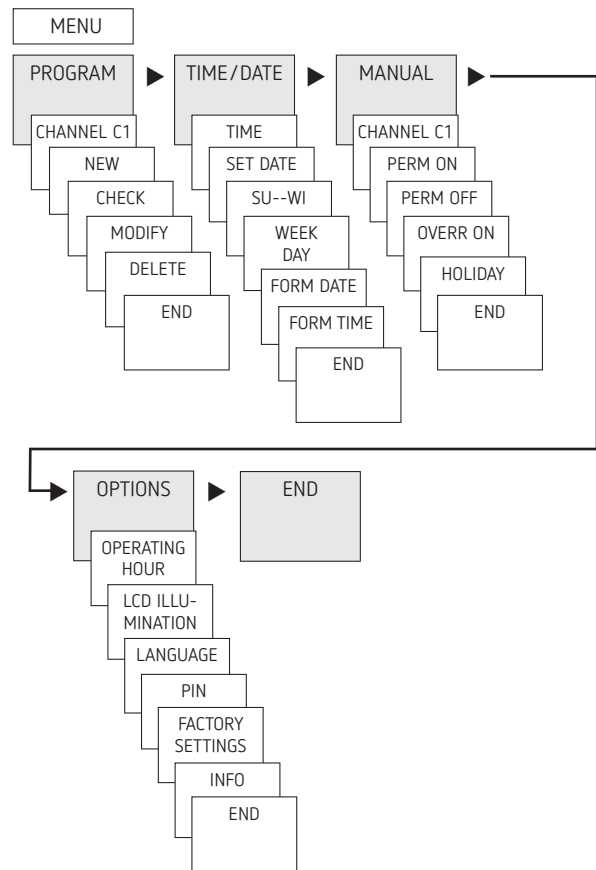
Display & buttons



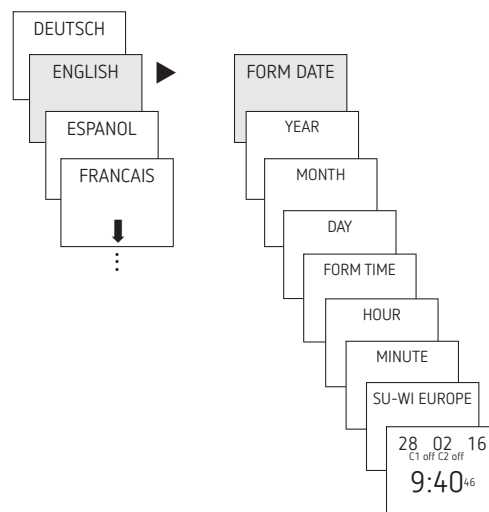
Operating instructions



Overview of navigation menu



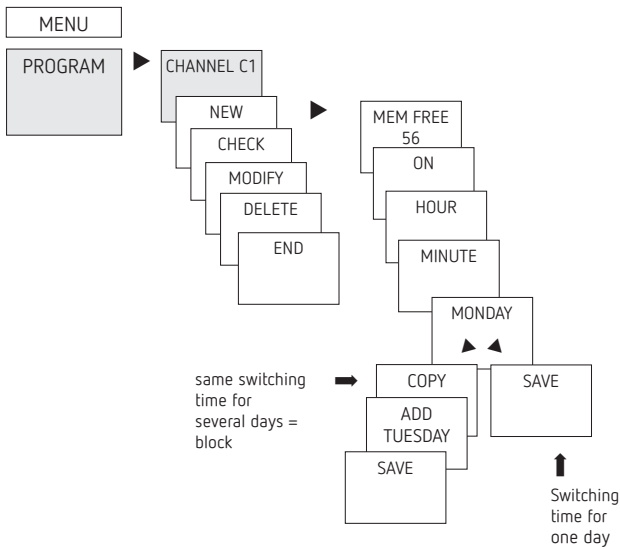
Initial operation



- Set language, date, time as well as summer/winter time (SU-WI)
- Press any button and display follows on screen (see figure)

5. Settings and functions

Set switching time



① A switching time always consists of a start time and an end time

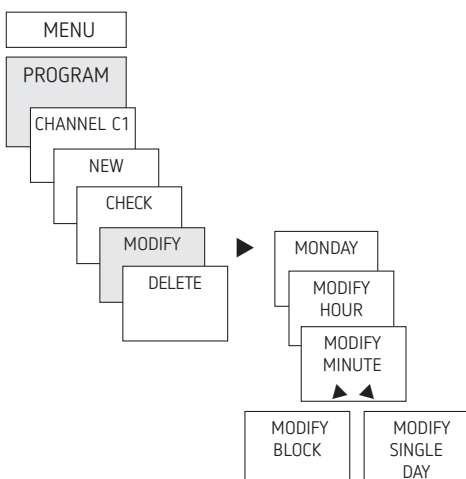
① There are 56 memory cells available

Example: Switch on sports hall lighting from Mon–Fri, 7:30 to 12:00 hrs

- Press MENU
- Select PROGRAM and press OK to confirm
- Select CHANNEL C1 or C2, confirm with OK
- Select NEW and press OK to confirm
- Select ON (for turn-on time) or OFF (for turn-off time), confirm with OK
- Set required turn-on time (Mo–Fr, 7:30), confirm with OK
- Select COPY, confirm with OK
- ADD TUESDAY is displayed, confirm by pressing OK and also confirm the days We, Th, Fr by pressing OK.
- Continue with ► until SAVE is displayed.
- Confirm by pressing OK.

Repeat all steps for the turn-off time, however instead of selecting ON with ► select OFF and enter 12:00 for hour and minute.

Change switching times

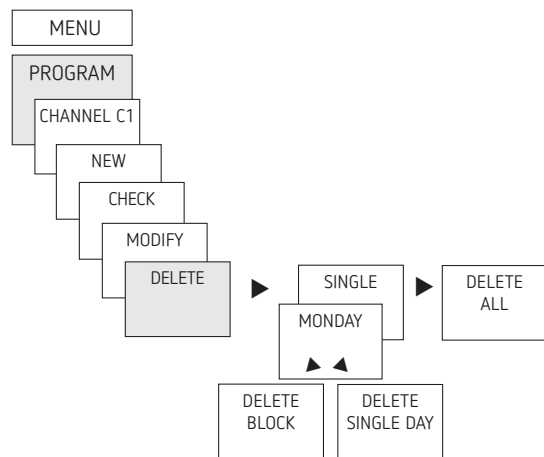


① You can either change or delete a block, i.e. a switching time copied for several days (e.g. Mon–Fri) or a single switching time

Change individual switching times

- Press MENU
- Select PROGRAM and press OK to confirm
- Select CHANNEL C1 or C2, confirm with OK
- Select MODIFY, confirm by pressing OK
- Select day, confirm with OK
- MODIFY HOUR, use the + or – buttons to change hour and minute and confirm with OK.
- To change several switching times, select MODIFY BLOCK, confirm with OK

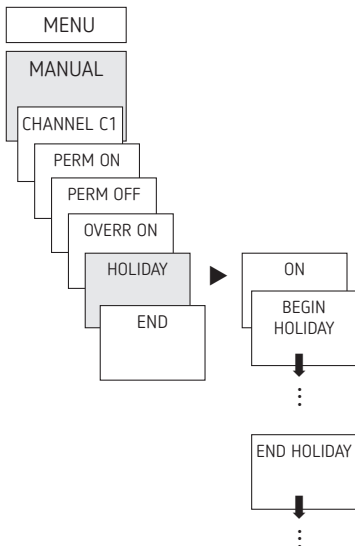
Delete switching program



① You can either delete a block, i.e. a switching time copied for several days (e.g. Mon–Fri) or a single switching time

- Press MENU
- Select PROGRAM and confirm with OK
- Select CHANNEL C1 or C2, confirm with OK
- Select DELETE, confirm with OK
- INDIVIDUAL is displayed (with ► DELETE ALL), confirm with OK
- MONDAY is displayed, confirm with OK
- Select DELETE BLOCK, confirm with OK
- With ► DELETE MONDAY etc. individual days can also be cleared.

Setting holiday function

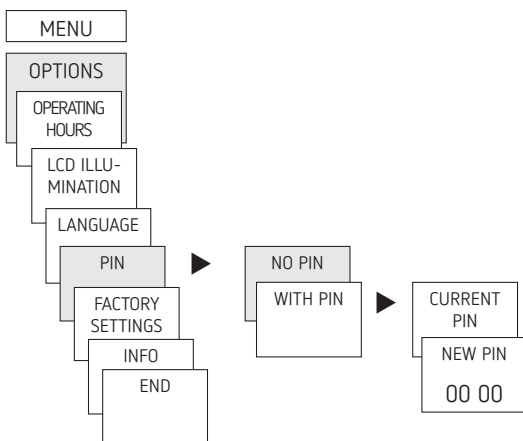


- Press MENU
- Select MANUAL and press OK to confirm
- Select CHANNEL C1 or C2, confirm with OK
- Select HOLIDAY and press OK to confirm
- Select ON and press OK to confirm
- Select START HOLIDAY and press OK to confirm
- Enter YEAR, MONTH, DAY, HOUR and press OK to confirm
- Select END HOLIDAY and press OK to confirm
- Enter YEAR, MONTH, DAY, HOUR and press OK to confirm

Activating PIN code

The PIN code is set in OPTIONS via the menu.

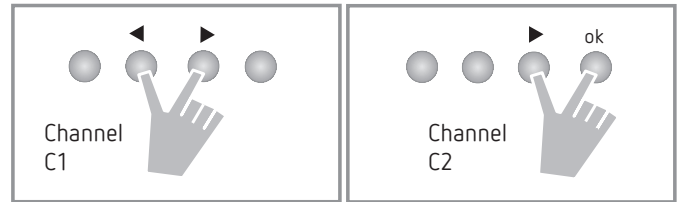
- ① If you have forgotten your PIN, call the Eaton Hotline.
- ① Have the serial number ready.



Setting manual or permanent switching

Manual or permanent switching can be set via the menu in MANUAL or (in the automatic screen) by button combination (see picture).

- Manual control:
Reversing the channel status to the next automatic or programmed switching.
- Permanent switching:
As long as a permanent switching (on or off) is activated, the programmed switching times are ineffective



Activating manual control

- Briefly press both buttons simultaneously

Activating permanent switching

- Press both buttons simultaneously for 2 seconds

Cancelling manual/permanent switching

- Press both buttons simultaneously

Hour counter

The operating hours of the channel (relay) are displayed and deleted in the OPTIONS menu. If the number of operating hours exceeds the value set in the Service menu, SERVICE will appear in the display.

Example: Replace a lamp after after 5,000 h.

- Delete operating hours or set a higher value in Service (e.g. to 10,000 h)

Resetting the time switch

- Press the 4 buttons simultaneously
→ You can choose between KEEP PROGRAM and DELETE PROGRAM.

6. Technical data

Operating voltage:	230 V AC +10 % / -15 %
Frequency:	50-60 Hz
Standby:	0,4 W
Max switching capacity:	16 A (at 250 V, cos φ = 1)
Switching capacity:	10 A (at 250 V, cos φ = 0,6)
Min. switching capacity:	10 mA/230 V AC 100mA/ 24 V AC/DC
Switch output:	switching of any phase is permitted (TSDW2CO-1)
TSDW1CO-1:	suitable for switching SELV (Safe Extra-Low Voltage)
Shortest switching time:	1 min
Switching accuracy:	accurate to the second
Protection rating:	IP 20 in accordance with EN 60529
Protection class:	II in accordance with EN 60730-1 subject to designated installation
Operating temperature:	-30 °C ... +60 °C
Power reserve:	10 years at +20 °C
Time accuracy (typical):	±0,25 s/day (25 °C)
Rated impulse withstand voltage:	4 kV
Pollution degree:	2
Software:	class A
Contact:	two way switch
Glow lamp load:	2600 W
Halogen lamp load:	2600 W

Fluorescent lamp load: uncorrected:	2600 VA
Series corrected:	2600 VA
parallel-corrected:	1300 VA (130 µF)
Compact fluorescent tubes (EVG):	1100 W
LED lamps (< 2 W):	50 W
LED lamps (> 2 W):	600 W

① The time switch display is only fully functional at temperatures from +5 °C - +55 °C.

7. Contact

Eaton Industries (Austria) GmbH
Eugenia 1
A-3943 Schrems
Austria

Technical Support Center
TechSupportEMEA@eaton.com