

Pluggable Single Pole & Multi-pole Surge Protective Devices (SPDs)

Overvoltage Protection

ProTec T2-CM-L-E

Special features:

- Pluggable design with 9mm size per pole
- Type 2 and high rated Type 3 SPD
- Available in operating voltages 275V and 440V
- Short-circuit current rating up to 25kA
- Discharge capacity I_{max} up to 10kA (L-N) and 20kA (N-PE)
- All modules including N-PE with operating state green-red
- Optional remote contact (RC) signalling



IEC 61643-11:2011



EN 61643-11:2012+A11:2018



ProTec T2-CM-E offers basic protection as a Type 2 and high rated Type 3 surge protective device (SPD) for operating voltages (U_c) 275V and 440V. The varistor-based protection modules feature outstanding short-circuit current up to 25kA which is one of the highest among the products of this range, and therefore, gives more installation flexibility. All modules are equipped with a state-of-the-art thermal disconnecter and life-status green-red monitoring indicators for each mode of protection – in this case, two indicators per plug. Beside the visual mechanical indicator, optional remote contacts (RC) feature a three-pole remote signalling terminal, which enables remote monitoring of the operating state of the device. This space saving solution can be used in all sub-distribution boards, AC EV charger applications, and many others.

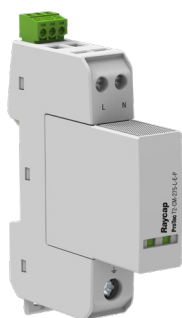


More Product Information

RoHS
COMPLIANT  CE

DATA SHEET

Pluggable Multi-pole SPD ProTec T2-CM-2+0-L-E(-R) Class II • Class III • Type 2 • Type 3



Location of Use: Sub-distribution Boards
 Network Systems: TN-S, TN-C, IT* (only 440)
 Mode of Protection: L-PE, L-PEN, N-PE
 IEC/EN Category: Class II+III / Type 2+3
 Housing: Pluggable Design
 Compliance: IEC 61643-11:2011
 EN 61643-11:2012+A11:2018

Technical Data

ProTec T2-CM-xxx-2+0-L-E(-R)		275	440
Electrical			
Nominal AC Voltage (50/60 Hz)	U_o	230V	230V
Maximum Continuous Operating Voltage (AC)	U_c	275V	440V
Nominal Discharge Current (8/20 μ s)	I_n		10 kA
Maximum Discharge Current (8/20 μ s)	I_{max}		20 kA
Voltage Protection Level for Type 2+3	U_p	1200V	1700V
Voltage Protection Level for Type 3 only	U_p	1000V	1400V
Open Circuit Voltage of Combination Wave Generator (1.2/50 μ s)	U_{oc}		6 kV
Short Circuit Current of Combination Wave Generator (8/20 μ s)	I_{cw}		3 kA
Response Time	t_A		< 25 ns
Overcurrent Protection (max)			100 A gG
Short-Circuit Current Rating	I_{SCCR}		25 kA
TOV Withstand 5s	U_T	335V	440V
TOV 120min	$U_T / mode$	440V / Safe Fail	440V / Withstand
Number of Ports			1
Additional Electrical Parameters (Tests performed within Raycap testing laboratory only)			
Residual Voltage at 5 kA (8/20 μ s)	U_{res}	1000V	1500V
Overcurrent Protection (min)			40 A gG
Mechanical & Environmental			
Temperature Range	T_a	-40 °C to +85 °C	
Permissible Humidity	RH	5%...95%	
Altitude (max)		6562 ft [2000 m]	
Terminal Screw Torque	(L, N) M_{max}	10 lbf-in [1.2 Nm]	
	(PE) M_{max}	17 lbf-in [2.0 Nm]	
Conductor Cross Section (max)	(L, N)	8 AWG (Solid, Stranded) / 10 AWG (Flexible)	
	(PE)	10 mm ² (Solid, Stranded) / 6 mm ² (Flexible)	
	(L, N)	2 AWG (Solid, Stranded) / 4 AWG (Flexible)	
	(PE)	35 mm ² (Solid, Stranded) / 25 mm ² (Flexible)	
Mounting		35 mm DIN Rail, EN 60715	
Degree of Protection		IP 20 (built-in)	
Thermal Protection		Yes	
Fault Indication		Red Flag	
Remote Contacts (RC)		Optional	
RC Switching Capacity		AC: 250/0.5A; DC: 60V/0.1A	
RC Terminal Cross Section (max)		13 AWG [1.5 mm ²]	
RC Terminal Screw Torque	M_{max}	3.5 lbf-in [0.4 Nm]	

*Only applicable for SPD with U_c 440V to IT power systems where the earth on the distribution transformer is interconnected with the earth on the consumer side (RE=RA in Figure 44.A1 of IEC 60364-4-44:2018).

Connection Configurations can be found in QR Code link on intro page.

Raycap

www.raycap.com

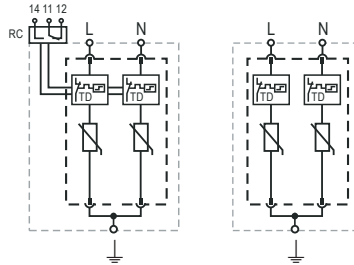
RoHS COMPLIANT CE

Information contained in this document is subject to change at any time without notice.

Internal Configuration

Legend

- L Line Conductor Terminal
- N Neutral Conductor Terminal
- PE PE Conductor Terminal
- RC Remote Contacts Terminal
- TD Thermal Disconnect

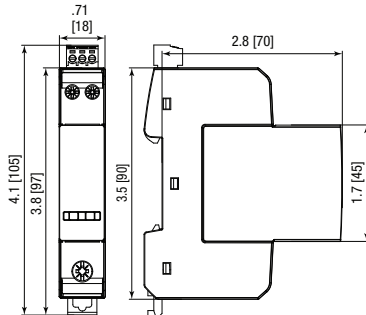


ProTec T2-CM-xxx-2+0-L-E(-R)

Order Information

Order Code	275	440
ProTec T2-CM-xxx-2+0-L-E	515 599	515 601
ProTec T2-CM-xxx-2+0-L-E-R (with remote contact)	515 600	515 602
ProTec T2-CM-xxx-L-E-P (plug)	515 667	515 668

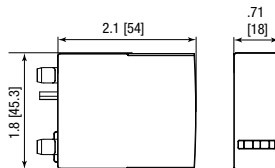
Dimensions & Packaging



Complete Unit

ProTec T2-CM-xxx-2+0-L-E		275	440
Weight	pounds [grams]	.334 [152]	.352 [160]
ProTec T2-CM-xxx-2+0-L-E-R			
Weight	pounds [grams]	.345 [157]	.363 [165]
DIN 43880 Dimension		1 TE / .70" [18 mm]	
Packaging Dimensions (H x W x L)		3.2 x 1.7 x 4.6" [83.5 x 44 x 117 mm]	
Standard Order Quantity		15 Units	

Spare plug



Single Unit

ProTec T2-CM-xxx-L-E-P		275	440
Weight	pounds [grams]	.173 [78.5]	.190 [86.5]
DIN 43880 Dimension		1 TE / .70" [18 mm]	
Packaging Dimensions (H x W x L)		2.5 x 1.8 x 8.7" [64 x 45 x 220 mm]	
Standard Order Quantity		24 Units	

DATA SHEET

Pluggable Multi-pole SPD ProTec T2-CM-3+0-L-E(-R) Class II • Class III • Type 2 • Type 3



Location of Use: Sub-distribution Boards
 Network Systems: TN-C, IT* (only 440)
 Mode of Protection: L-PEN
 IEC/EN Category: Class II+III / Type 2+3
 Housing: Pluggable Design
 Compliance: IEC 61643-11:2011
 EN 61643-11:2012+A11:2018

Technical Data

ProTec T2-CM-xxx-3+0-L-E(-R)

275

440

Electrical

		275	440
Nominal AC Voltage (50/60 Hz)	U_o	230V	230V
Maximum Continuous Operating Voltage (AC)	U_c	275V	440V
Nominal Discharge Current (8/20 μ s)	I_n		10 kA
Maximum Discharge Current (8/20 μ s)	I_{max}		20 kA
Voltage Protection Level for Type 2+3	U_p	1200V	1700V
Voltage Protection Level for Type 3 only	U_p	1000V	1400V
Open Circuit Voltage of Combination Wave Generator (1.2/50 μ s)	U_{oc}		6 kV
Short Circuit Current of Combination Wave Generator (8/20 μ s)	I_{cw}		3 kA
Response Time	t_A		< 25 ns
Overcurrent Protection (max)			100 A gG
Short-Circuit Current Rating	I_{SCCR}		25 kA
TOV Withstand 5 s	U_T	335V	440V
TOV 120 min	$U_T / mode$	440V / Safe Fail	440V / Withstand
Number of Ports			1

Additional Electrical Parameters (Tests performed within Raycap testing laboratory only)

Residual Voltage at 5 kA (8/20 μ s)	U_{res}	1000V	1500V
Overcurrent Protection (min)			40 A gG

Mechanical & Environmental

Temperature Range	T_a	-40 °C to +85 °C	
Permissible Humidity	RH	5%...95%	
Altitude (max)		6562 ft [2000 m]	
Terminal Screw Torque	(L) M_{max}	10 lbf-in [1.2 Nm]	
	(PEN) M_{max}	17 lbf-in [2.0 Nm]	
Conductor Cross Section (max)	(L)	8 AWG (Solid, Stranded) / 10 AWG (Flexible)	
		10 mm ² (Solid, Stranded) / 6 mm ² (Flexible)	
	(PEN)	2 AWG (Solid, Stranded) / 4 AWG (Flexible)	
		35 mm ² (Solid, Stranded) / 25 mm ² (Flexible)	
Mounting		35 mm DIN Rail, EN 60715	
Degree of Protection		IP 20 (built-in)	
Thermal Protection		Yes	
Fault Indication		Red Flag	
Remote Contacts (RC)		Optional	
RC Switching Capacity		AC: 250/0.5A; DC: 60V/0.1A	
RC Terminal Cross Section (max)		13 AWG [1.5 mm ²]	
RC Terminal Screw Torque	M_{max}	3.5 lbf-in [0.4 Nm]	

*Only applicable for SPD with U_c 440V to IT power systems where the earth on the distribution transformer is interconnected with the earth on the consumer side (RE=RA in Figure 44.A1 of IEC 60364-4-44:2018).

Connection Configurations can be found in QR Code link on intro page.




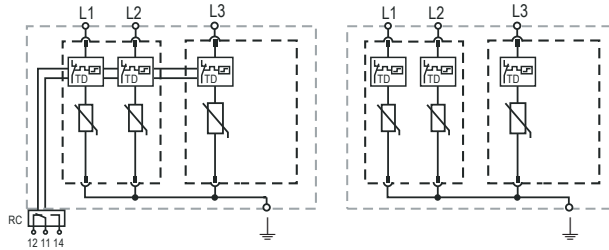
Raycap www.raycap.com

Information contained in this document is subject to change at any time without notice.

Internal Configuration

Legend

- L* Line Conductor Terminal
- N* Neutral Conductor Terminal
-  PEN Conductor Terminal
- RC* Remote Contacts Terminal
- TD* Thermal Disconnect

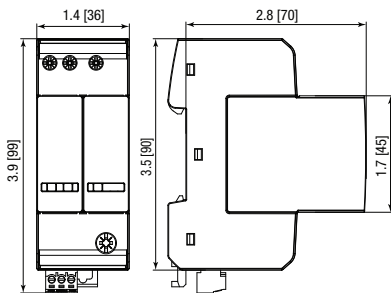


ProTec T2-CM-xxx-3+0-L-E-R

Order Information

Order Code	275	440
ProTec T2-CM-xxx-3+0-L-E	515 700	515 703
ProTec T2-CM-xxx-3+0-L-E-R (with remote contact)	515 701	515 704
ProTec T2-CM-xxx-L-E-P (plug)	515 667	515 668
ProTec T2-CM-xxx-L-E-01-P (L3-PEN plug)	515 702	515 705

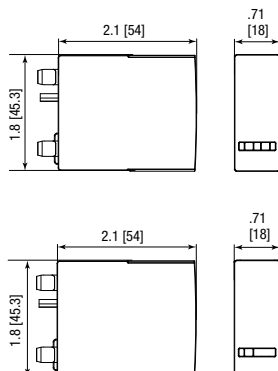
Dimensions & Packaging



Complete Unit

ProTec T2-CM-xxx-3+0-L-E		275
Weight	pounds [grams]	.535 [242]
ProTec T2-CM-xxx-3+0-L-E-R		275
Weight	pounds [grams]	.549 [249]
DIN 43880 Dimension		2 TE / 1.42" [36 mm]
Packaging Dimensions (H x W x L)		3.2 x 1.7 x 4.6" [83.5 x 44 x 117 mm]
Standard Order Quantity		8 Units

Spare plug



Single Unit

ProTec T2-CM-xxx-L-E-P		275
Weight	pounds [grams]	.173 [78.5]
ProTec T2-CM-xxx-L-E-01-P		275
Weight	pounds [grams]	.095 [43]
DIN 43880 Dimension		1 TE / .70" [18 mm]
Packaging Dimensions (H x W x L)		2.5 x 1.8 x 8.7" [64 x 45 x 220 mm]
Standard Order Quantity		24 Units

DATA SHEET

Pluggable Multi-pole SPD ProTec T2-CM-4+0-L-E(-R) Class II • Class III • Type 2 • Type 3



Location of Use: Sub-distribution Boards
 Network Systems: TN-S, TN-C, IT* (only 440)
 Mode of Protection: L-PE, L-PEN, N-PE
 IEC/EN Category: Class II+III / Type 2+3
 Housing: Pluggable Design
 Compliance: IEC 61643-11:2011
 EN 61643-11:2012+A11:2018

Technical Data


ProTec T2-CM-xxx-4+0-L-E(-R)		275	440
Electrical			
Nominal AC Voltage (50/60 Hz)	U_o	230V	230V
Maximum Continuous Operating Voltage (AC)	U_c	275V	440V
Nominal Discharge Current (8/20 μ s)	I_n		10 kA
Maximum Discharge Current (8/20 μ s)	I_{max}		20 kA
Voltage Protection Level for Type 2+3	U_p	1200V	1700V
Voltage Protection Level for Type 3 only	U_p	1000V	1400V
Open Circuit Voltage of Combination Wave Generator (1.2/50 μ s)	U_{oc}		6 kV
Short Circuit Current of Combination Wave Generator (8/20 μ s)	I_{cw}		3 kA
Response Time	t_A		< 25 ns
Overcurrent Protection (max)			100 A gG
Short-Circuit Current Rating	I_{SCCR}		25 kA
TOV Withstand 5s	U_T	335V	440V
TOV 120min	$U_T / mode$	440V / Safe Fail	440V / Withstand
Number of Ports			1
Additional Electrical Parameters (Tests performed within Raycap testing laboratory only)			
Residual Voltage at 5 kA (8/20 μ s)	U_{res}	1000V	1500V
Overcurrent Protection (min)			40 A gG
Mechanical & Environmental			
Temperature Range	T_a	-40 °C to +85 °C	
Permissible Humidity	RH	5%...95%	
Altitude (max)		6562 ft [2000 m]	
Terminal Screw Torque	(L, N) M_{max}	10 lbf-in [1.2 Nm]	
	(PE) M_{max}	17 lbf-in [2.0 Nm]	
Conductor Cross Section (max)	(L, N)	8 AWG (Solid, Stranded) / 10 AWG (Flexible)	
		10 mm ² (Solid, Stranded) / 6 mm ² (Flexible)	
	(PE)	2 AWG (Solid, Stranded) / 4 AWG (Flexible)	
		35 mm ² (Solid, Stranded) / 25 mm ² (Flexible)	
Mounting		35 mm DIN Rail, EN 60715	
Degree of Protection		IP 20 (built-in)	
Thermal Protection		Yes	
Fault Indication		Red Flag	
Remote Contacts (RC)		Optional	
RC Switching Capacity		AC: 250/0.5A; DC: 60V/0.1A	
RC Terminal Cross Section (max)		13 AWG [1.5 mm ²]	
RC Terminal Screw Torque	M_{max}	3.5 lbf-in [0.4 Nm]	

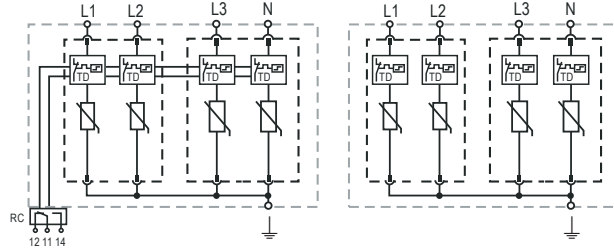
*Only applicable for SPD with U_c 440V to IT power systems where the earth on the distribution transformer is interconnected with the earth on the consumer side (RE=RA in Figure 44.A1 of IEC 60364-4-44:2018).

Connection Configurations can be found in QR Code link on intro page.

Internal Configuration

Legend

- L* Line Conductor Terminal
- N* Neutral Conductor Terminal
-  PE Conductor Terminal
- RC* Remote Contacts Terminal
- TD* Thermal Disconnect

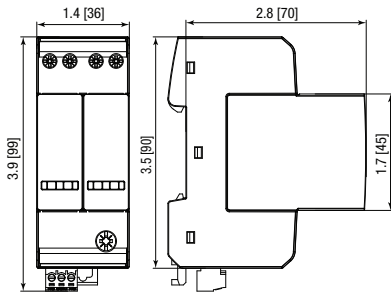


ProTec T2-CM-xxx-4+0-L-E(-R)

Order Information

Order Code	275	440
ProTec T2-CM-xxx-4+0-L-E	515 603	515 605
ProTec T2-CM-xxx-4+0-L-E-R (with remote contact)	515 604	515 606
ProTec T2-CM-xxx-L-E-P (plug)	515 667	515 668

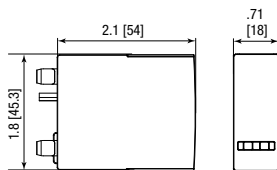
Dimensions & Packaging



Complete Unit

ProTec T2-CM-xxx-4+0-L-E	275	440	
Weight	pounds [grams]	.618 [281]	.654 [297]
ProTec T2-CM-xxx-4+0-L-E-R			
Weight	pounds [grams]	.632 [287]	.667 [303]
DIN 43880 Dimension	2 TE / 1.42" [36 mm]		
Packaging Dimensions (H x W x L)	3.2 x 1.7 x 4.6" [83.5 x 44 x 117 mm]		
Standard Order Quantity	8 Units		

Spare plug



Single Unit

ProTec T2-CM-xxx-L-E-P	275	440	
Weight	pounds [grams]	.173 [78.5]	.190 [86.5]
DIN 43880 Dimension	1 TE / .70" [18 mm]		
Packaging Dimensions (H x W x L)	2.5 x 1.8 x 8.7" [64 x 45 x 220 mm]		
Standard Order Quantity	24 Units		

DATA SHEET

Pluggable Multi-pole SPD ProTec T2-CM-1+1-L-E(-R) Class II • Class III • Type 2 • Type 3



Location of Use: Sub-distribution Boards
 Network Systems: TT, TN-S
 Mode of Protection: L-N, N-PE
 IEC/EN Category: Class II+III / Type 2+3
 Housing: Pluggable Design
 Compliance: IEC 61643-11:2011
 EN 61643-11:2012+A11:2018

Technical Data

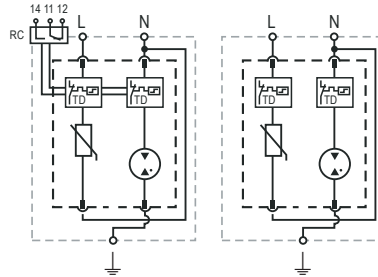
ProTec T2-CM-xxx-1+1-L-E(-R)		275	440
Electrical			
Nominal AC Voltage (50/60 Hz)	U_o	230V	230V
Maximum Continuous Operating Voltage (AC)	(L-N) U_c	275V	440V
	(N-PE) U_c	255V	255V
Nominal Discharge Current (8/20 μ s)	(L-N)/(N-PE) I_n	10kA/20kA	
Maximum Discharge Current (8/20 μ s)	(L-N)/(N-PE) I_{max}	20kA/40kA	
Voltage Protection Level for Type 2+3	(L-N) U_p	1200V	1700V
	(N-PE) U_p	1500V	1500V
Voltage Protection Level for Type 3 only	(L-N) U_p	1000V	1400V
	(N-PE) U_p	1000V	1000V
Open Circuit Voltage of Combination Wave Generator (1.2/50 μ s)	(L-N)/(N-PE) U_{oc}	6kV/6kV	
Short Circuit Current of Combination Wave Generator (8/20 μ s)	(L-N)/(N-PE) I_{cw}	3kA/3kA	
Follow Current Interrupt Rating	(N-PE) I_{fi}	100A	
Response Time	(L-N)/(N-PE) t_A	< 25 ns / < 100 ns	
Overcurrent Protection (max)		100 A gG	
Short-Circuit Current Rating	I_{SCCR}	25 kA	
TOV Withstand 5s	(L-N) U_T	335V	440V
TOV 120min	(L-N) $U_T / mode$	440V / Safe Fail	440V / Withstand
TOV Withstand 200ms	(N-PE) U_T	1200V / 300A	
Number of Ports		1	
Additional Electrical Parameters (Tests performed within Raycap testing laboratory only)			
Residual Voltage at 5 kA (8/20 μ s)	U_{res}	1000V / 255V	1500V / 255V
Overcurrent Protection (min)		40 A gG	
Mechanical & Environmental			
Temperature Range	T_a	-40 °C to +85 °C	
Permissible Humidity	RH	5%...95%	
Altitude (max)		6562 ft [2000 m]	
Terminal Screw Torque	(L, N) M_{max}	10 lbf-in [1.2 Nm]	
	(PE) M_{max}	17 lbf-in [2.0 Nm]	
Conductor Cross Section (max)	(L, N)	8 AWG (Solid, Stranded) / 10 AWG (Flexible)	
		10 mm ² (Solid, Stranded) / 6 mm ² (Flexible)	
	(PE)	2 AWG (Solid, Stranded) / 4 AWG (Flexible)	
		35 mm ² (Solid, Stranded) / 25 mm ² (Flexible)	
Mounting		35 mm DIN Rail, EN 60715	
Degree of Protection		IP 20 (built-in)	
Thermal Protection		Yes	
Fault Indication		Red Flag	
Remote Contacts (RC)		Optional	
RC Switching Capacity		AC: 250/0.5A; DC: 60V/0.1A	
RC Terminal Cross Section (max)		13 AWG [1.5 mm ²]	
RC Terminal Screw Torque	M_{max}	3.5 lbf-in [0.4 Nm]	

Connection Configurations can be found in QR Code link on intro page.

Internal Configuration

Legend

- L Line Conductor Terminal
- N Neutral Conductor Terminal
- PE PE Conductor Terminal
- RC Remote Contacts Terminal
- TD Thermal Disconnect

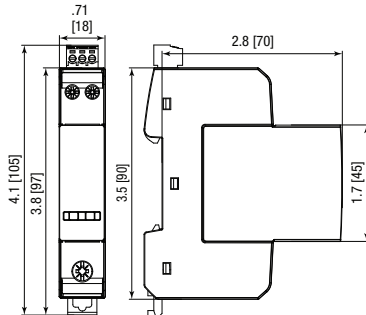


ProTec T2-CM-xxx-1+1-L-E(R)

Order Information

Order Code	275	440
ProTec T2-CM-xxx-1+1-L-E	515 596	515 661
ProTec T2-CM-xxx-1+1-L-E-R (with remote contact)	515 597	515 662
ProTec T2-CM-xxx-L-G-E-P (plug)	515 598	515 607

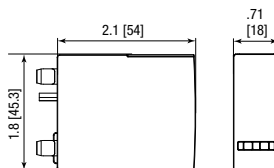
Dimensions & Packaging



Complete Unit

ProTec T2-CM-xxx-1+1-L-E	275	440	
Weight	pounds [grams]	.304 [138]	.131 [142]
ProTec T2-CM-xxx-1+1-L-E-R			
Weight	pounds [grams]	.313 [142]	.321 [146]
DIN 43880 Dimension	1 TE / .70" [18 mm]		
Packaging Dimensions (H x W x L)	3.2 x 1.7 x 4.6" [83.5 x 44 x 117 mm]		
Standard Order Quantity	15 Units		

Spare plug



Single Unit

ProTec T2-CM-xxx-L-G-E-P	275	440	
Weight	pounds [grams]	.144 [65.5]	.151 [68.5]
DIN 43880 Dimension	1 TE / .70" [18 mm]		
Packaging Dimensions (H x W x L)	2.5 x 1.8 x 8.7" [64 x 45 x 220 mm]		
Standard Order Quantity	24 Units		

DATA SHEET

Pluggable Multi-pole SPD ProTec T2-CM-3+1-L-E(-R) Class II • Class III • Type 2 • Type 3



Location of Use: Sub-distribution Boards
 Network Systems: TT, TN-S
 Mode of Protection: L-N, N-PE
 IEC/EN Category: Class II+III / Type 2+3
 Housing: Pluggable Design
 Compliance: IEC 61643-11:2011
 EN 61643-11:2012+A11:2018

Technical Data

ProTec T2-CM-xxx-3+1-L-E(-R)

275

440

Electrical

Parameter	Symbol	275	440
Nominal AC Voltage (50/60Hz)	U_o	230V	230V
Maximum Continuous Operating Voltage (AC)	(L-N) U_c	275V	440V
	(N-PE) U_c	255V	255V
Nominal Discharge Current (8/20 μ s)	(L-N)/(N-PE) I_n	10kA/20kA	
Maximum Discharge Current (8/20 μ s)	(L-N)/(N-PE) I_{max}	20kA/40kA	
Voltage Protection Level for Type 2+3	(L-N) U_p	1200V	1700V
	(N-PE) U_p	1500V	1500V
Voltage Protection Level for Type 3 only	(L-N) U_p	1000V	1400V
	(N-PE) U_p	1000V	1000V
Open Circuit Voltage of Combination Wave Generator (1.2/50 μ s)	(L-N)/(N-PE) U_{oc}	6kV/6kV	
Short Circuit Current of Combination Wave Generator (8/20 μ s)	(L-N)/(N-PE) I_{cw}	3kA/3kA	
Follow Current Interrupt Rating	(N-PE) I_{fi}	100A	
Response Time	(L-N)/(N-PE) t_A	< 25 ns / < 100 ns	
Overcurrent Protection (max)		100 A gG	
Short-Circuit Current Rating	I_{SCCR}	25 kA	
TOV Withstand 5s	(L-N) U_T	335V	440V
TOV 120min	(L-N) $U_T / mode$	440V / Safe Fail	440V / Withstand
TOV Withstand 200ms	(N-PE) U_T	1200V / 300A	
Number of Ports		1	

Additional Electrical Parameters (Tests performed within Raycap testing laboratory only)

Residual Voltage at 5 kA (8/20 μ s)	U_{res}	1000V / 255V	1500V / 255V
Overcurrent Protection (min)		40A gG	

Mechanical & Environmental

Temperature Range	T_a	-40 °C to +85 °C	
Permissible Humidity	RH	5%...95%	
Altitude (max)		6562 ft [2000m]	
Terminal Screw Torque	(L, N) M_{max}	10 lbf-in [1.2Nm]	
	(PE) M_{max}	17 lbf-in [2.0Nm]	
Conductor Cross Section (max)	(L, N)	8 AWG (Solid, Stranded) / 10 AWG (Flexible)	
		10mm ² (Solid, Stranded) / 6mm ² (Flexible)	
	(PE)	2 AWG (Solid, Stranded) / 4 AWG (Flexible)	
		35mm ² (Solid, Stranded) / 25mm ² (Flexible)	
Mounting		35mm DIN Rail, EN 60715	
Degree of Protection		IP 20 (built-in)	
Thermal Protection		Yes	
Fault Indication		Red Flag	
Remote Contacts (RC)		Optional	
RC Switching Capacity		AC: 250/0.5A; DC: 60V/0.1A	
RC Terminal Cross Section (max)		13 AWG [1.5mm ²]	
RC Terminal Screw Torque	M_{max}	3.5 lbf-in [0.4Nm]	

Connection Configurations can be found in QR Code link on intro page.

Raycap


www.raycap.com

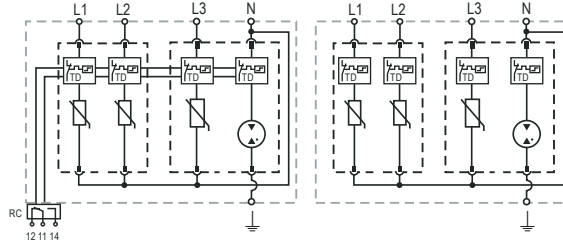
RoHS COMPLIANT  

Information contained in this document is subject to change at any time without notice.

Internal Configuration

Legend

- L* Line Conductor Terminal
- N* Neutral Conductor Terminal
-  PE Conductor Terminal
- RC* Remote Contacts Terminal
- TD* Thermal Disconnect

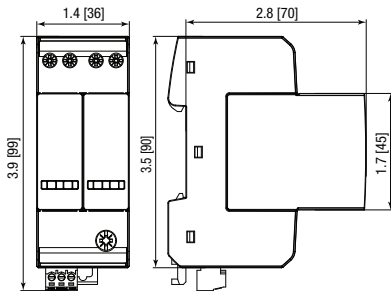


ProTec T2-CM-xxx-3+1-L-E(-R)

Order Information

Order Code	275	440
ProTec T2-CM-xxx-3+1-L-E	515 663	515 665
ProTec T2-CM-xxx-3+1-L-E-R (with remote contact)	515 664	515 666
ProTec T2-CM-xxx-L-E-P (plug L-N)	515 667	515 668
ProTec T2-CM-xxx-L-G-E-P (plug N-PE)	515 598	515 607

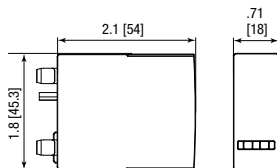
Dimensions & Packaging



Complete Unit

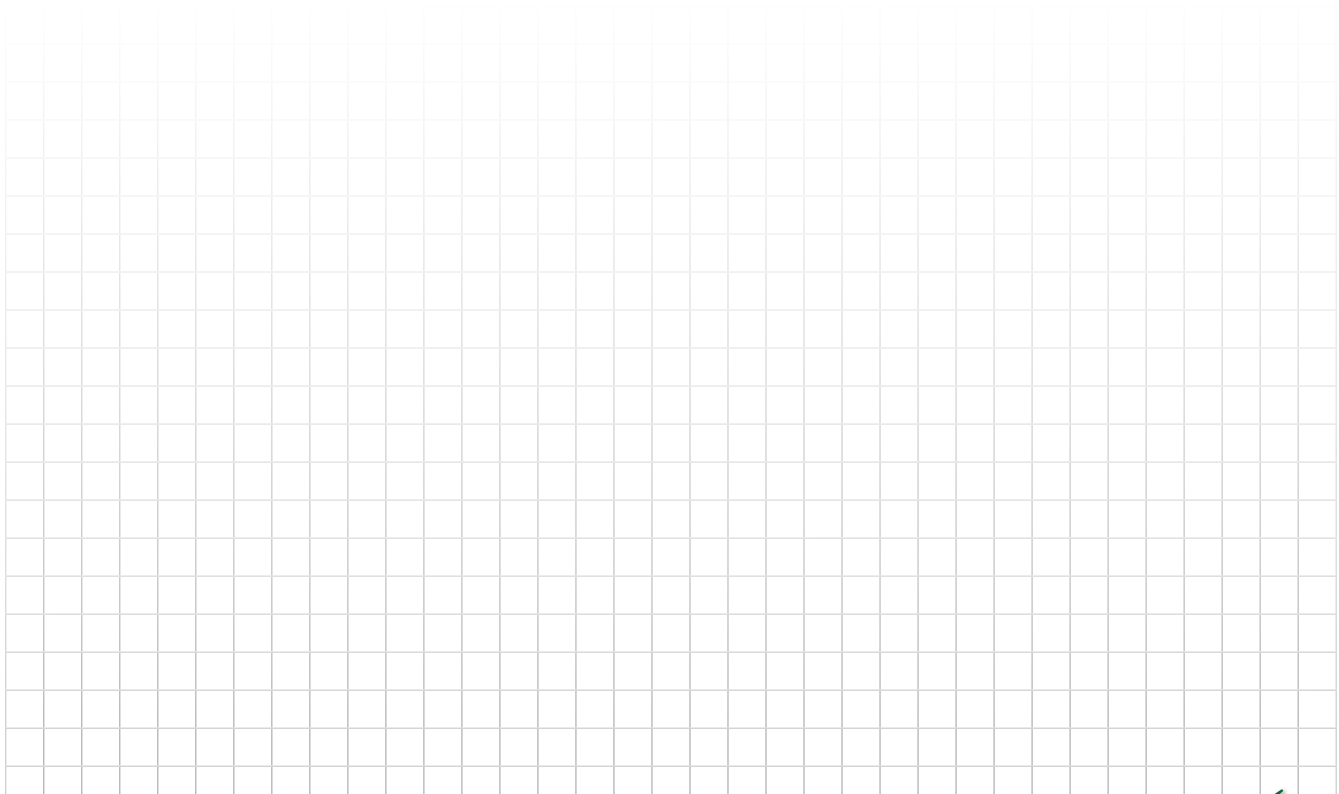
ProTec T2-CM-xxx-3+1-L-E	275	440	
Weight	pounds [grams]	.577 [262]	.604 [274]
ProTec T2-CM-xxx-3+1-L-E-R			
Weight	pounds [grams]	.590 [268]	.617 [280]
DIN 43880 Dimension	2 TE / 1.42" [36 mm]		
Packaging Dimensions (H x W x L)	3.2 x 1.7 x 4.6" [83.5 x 44 x 117 mm]		
Standard Order Quantity	8 Units		

Spare plug



Single Unit

ProTec T2-CM-xxx-L-E-P	275	440	
Weight	pounds [grams]	.173 [78.5]	.190 [86.5]
ProTec T2-CM-xxx-L-G-E-P			
Weight	pounds [grams]	.144 [65.5]	.151 [68.5]
DIN 43880 Dimension	1 TE / .70" [18 mm]		
Packaging Dimensions (H x W x L)	2.5 x 1.8 x 8.7" [64 x 45 x 220 mm]		
Standard Order Quantity	24 Units		



Connection Configurations can be found in QR Code link on intro page.

