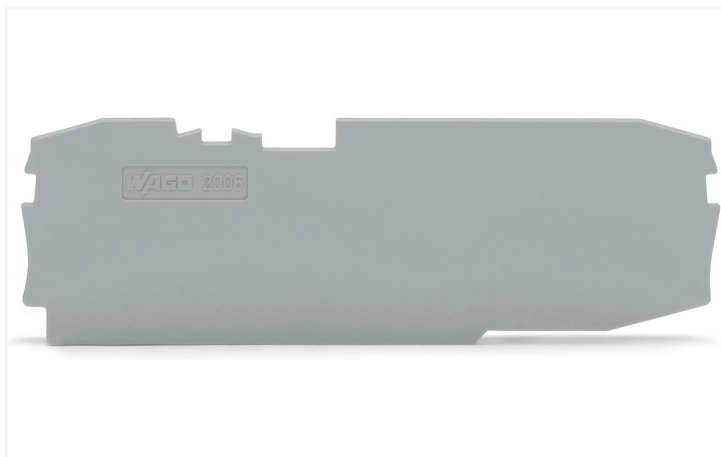


Data Sheet | Item Number: 2006-1691
End and intermediate plate; 1 mm thick; gray

<https://www.wago.com/2006-1691>



Color: ■ gray

Physical data

Width	1 mm / 0.039 inches
Height	96.3 mm / 3.791 inches
Depth	30.4 mm / 1.197 inches

Mechanical data

Mounting type	snap-on type
---------------	--------------

Material data

Note (material data)	Information on material specifications can be found here
Color	gray
Material group	I
Insulation material	Polyamide (PA66)
Flammability class per UL94	V0
Fire load	0.098 MJ
Weight	3.1 g

Commercial data

Product Group	22 (TOPJOB S)
eCl@ss 10.0	27-14-11-33
eCl@ss 9.0	27-14-11-33
ETIM 8.0	EC000886
ETIM 7.0	EC000886
PU (SPU)	100 (25) pcs
Packaging type	Box
Country of origin	DE
GTIN	4066966275285
Customs tariff number	85389099990

Environmental Product Compliance	
RoHS Compliance Status	Compliant, No Exemption

Approvals / Certificates

Declarations of conformity and manufacturer's declarations



Approval	Standard	Certificate Name
Railway WAGO GmbH & Co. KG	-	Railway Ready

Downloads

Environmental Product Compliance

Compliance Search	
Environmental Product Compliance 2006-1691	↓

Documentation

Additional Information		Bid Text				
Technical Section	pdf 2240.62 KB	↓	2006-1691	19.02.2019	xml 2.51 KB	↓
			2006-1691	28.04.2017	doc 23.50 KB	↓

CAD/CAE-Data

CAD data	CAE data
2D/3D Models 2006-1691	EPLAN Data Portal 2006-1691
↓	↓
	WSCAD Universe 2006-1691
	↓
	ZUKEN Portal 2006-1691
	↓

Subject to changes. Please also observe the further product documentation!

Current addresses can be found at: www.wago.com