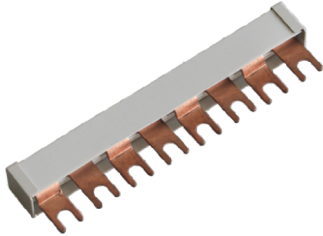


ProBar	1-2
Mechanical	
Number of Poles	2
Busbar Cross Section	6 AWG / 16 mm ²
Order Information	
Ordering Code	501 338
ProBar	1-3
Mechanical	
Number of Poles	3
Busbar Cross Section	6 AWG / 16 mm ²
Order Information	
Ordering Code	501 339
ProBar	1-4
Mechanical	
Number of Poles	4
Busbar Cross Section	6 AWG / 16 mm ²
Order Information	
Ordering Code	501 340
ProBar	1-5
Mechanical	
Number of Poles	5
Busbar Cross Section	6 AWG / 16 mm ²
Order Information	
Ordering Code	501 341
ProBar	1-6
Mechanical	
Number of Poles	6
Busbar Cross Section	6 AWG / 16 mm ²
Order Information	
Ordering Code	501 342
ProBar	1-7
Mechanical	
Number of Poles	7
Busbar Cross Section	6 AWG / 16 mm ²
Order Information	
Ordering Code	501 343
ProBar	1-8
Mechanical	
Number of Poles	8
Busbar Cross Section	6 AWG / 16 mm ²
Order Information	
Ordering Code	501 344
ProBar	1-11
Mechanical	
Number of Poles	11
Busbar Cross Section	6 AWG / 16 mm ²
Order Information	
Ordering Code	501 345

Modular Wiring Systems
ProBar Busbar

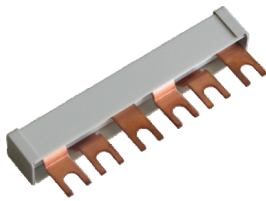
Two Phase Series



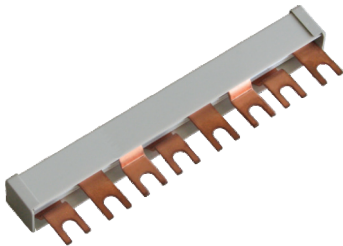
ProBar	2-8
Mechanical	
Number of Poles	8
Busbar Cross Section	6 AWG / 16 mm ²
Order Information	
Ordering Code	501 346

Modular Wiring Systems
ProBar Busbars

Three Phase Series



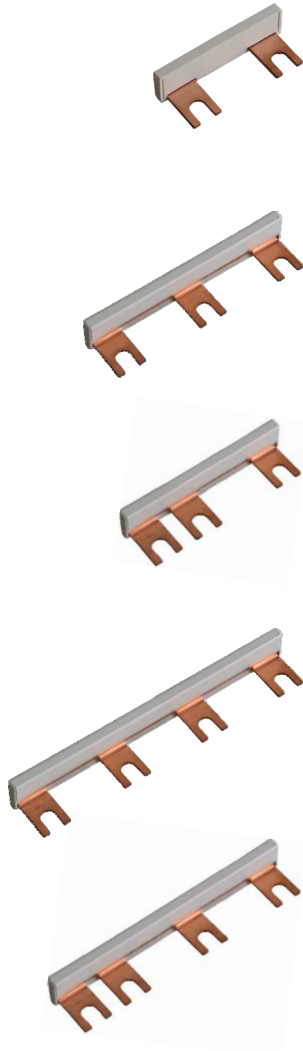
ProBar	3-6
Mechanical	
Number of Poles	6
Busbar Cross Section	6 AWG / 16 mm ²
Order Information	
Ordering Code	501 347



ProBar	3-8
Mechanical	
Number of Poles	8
Busbar Cross Section	6 AWG / 16 mm ²
Order Information	
Ordering Code	501 348

PB 1 Busbars

ProTec B(R) 2 TE • SafeTec B(R) 2 TE



PB 1 (2+0)	1 (2+0)
Mechanical	
Number of Poles	2
Busbar Cross Section	6 AWG / 16 mm ²
Order Information	
Ordering Code	501 349
PB 1 (3+0)	1 (3+0)
Mechanical	
Number of Poles	3
Busbar Cross Section	6 AWG / 16 mm ²
Order Information	
Ordering Code	501 350
PB 1 (2+1)	1 (2+1)
Mechanical	
Number of Poles	2
Busbar Cross Section	6 AWG / 16 mm ²
Order Information	
Ordering Code	501 351
PB 1 (4+0)	1 (4+0)
Mechanical	
Number of Poles	4
Busbar Cross Section	6 AWG / 16 mm ²
Order Information	
Ordering Code	501 352
PB 1 (3+1)	1 (3+1)
Mechanical	
Number of Poles	4
Busbar Cross Section	6 AWG / 16 mm ²
Order Information	
Ordering Code	501 353

inches
[mm]

Information contained in this document is subject to change at any time without notice.

