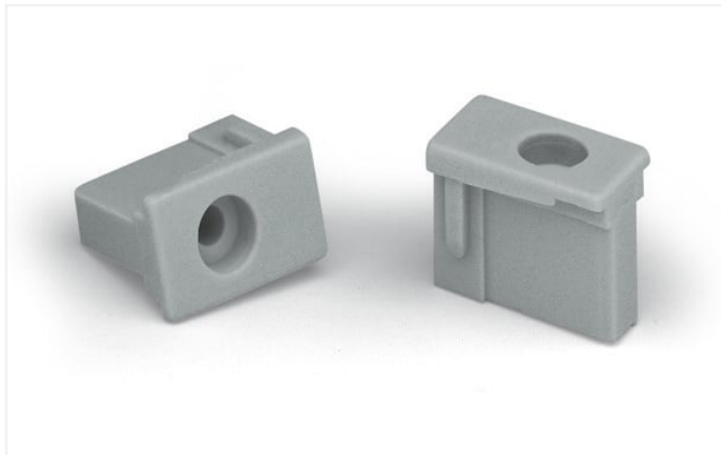


Data Sheet | Item Number: 231-193
Locking device; for male connectors; 1 part; gray

<https://www.wago.com/231-193>



Color: ■ gray

Mechanical data

Mounting type	Screw mount Panel mounting
Suitable	for angled THT male headers

Material data

Note (material data)	Information on material specifications can be found here
Color	gray
Material group	I
Insulation material	Polyamide (PA66)
Flammability class per UL94	V0
Fire load	0.012 MJ
Weight	0.4 g



Commercial data

Product Group	3 (Multi Conn. System)
eCl@ss 10.0	27-14-11-92
eCl@ss 9.0	27-14-11-92
ETIM 8.0	EC002848
ETIM 7.0	EC002848
PU (SPU)	100 (25) pcs
Packaging type	Box
Country of origin	DE
GTIN	4017332117975
Customs tariff number	85389099990

Environmental Product Compliance


RoHS Compliance Status Compliant, No Exemption

Approvals / Certificates

General approvals			Approvals for marine applications		
					
Approval	Standard	Certificate Name	Approval	Standard	Certificate Name
CSA DEKRA Certification B.V.	C22.2	1466354	LR Lloyds Register	IEC 61984	96/20035 (E5)

Downloads

Environmental Product Compliance



Compliance Search
Environmental Product Compliance 231-193 

Documentation

Additional Information

Technical Section	03.04.2019	pdf 2010.85 KB	
-------------------	------------	-------------------	---

CAD/CAE-Data

CAD data	CAE data
2D/3D Models 231-193 	ZUKEN Portal 231-193 

1 Compatible Products

1.1 Optional Accessories

1.1.1 Installation

1.1.1.1 Mounting accessories

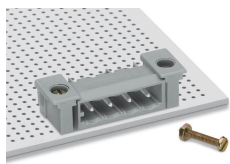


[Item No.: 231-195](#)
Screw with nut; M2x12; for fixing element

[Item No.: 231-194](#)
Self-tapping screw; B 2.2x13, fixing hole 1.8 mm Ø

Installation Notes

Installation



Locking devices enhance connection reliability between male headers with angled solder pins and the PCB. This substantially reduces mechanical stress on both solder pins and joints, particularly when dealing with small lengths and frequent mating cycles.