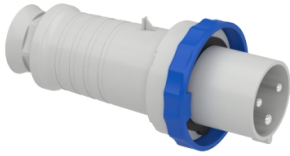


# Product data sheet

Specifications



## Wander plug, Mureva PK, 63A, 2P+E, 220V, IP67

81378

### Main

Range	Mureva
Product or component type	Wander plug
Device short name	Mureva plug
Plug, socket category	Low voltage
Poles description	2P + E
Network type	AC
Outlet standard	Industrial

### Complementary

Plug, socket, control station shape	Straight
[In] rated current	63 A
[Ue] rated operational voltage	200...250 V
Network frequency	50/60 Hz
Ground lug clockwise position	6 h
Plug, socket material	Housing: self-extinguishing engineering polymer
Contacts material	Pins: nickel plated brass
Connections - terminals	Captive screws
Cable cross section	6...25 mm <sup>2</sup>
Cable outer diameter	17...31 mm
cable entry	Cable gland
Thread type	Pg 36
Product weight	0.672 kg
Height	265 mm
Width	110 mm
Depth	110 mm
Colour	Grey (RAL 7035)
Voltage colour	Blue

### Environment

Standards	IEC 60309-2 IEC 60309-1
IP degree of protection	IP67 conforming to IEC 60529

<b>IK degree of protection</b>	IK08 conforming to EN 62262
<b>Fire resistance</b>	850 °C conforming to IEC 60695-2-11
<b>Relative humidity</b>	50 % at 40 °C 70 % at 30 °C 90 % at 20 °C
<b>Operating altitude</b>	2000 m
<b>Ambient air temperature for operation</b>	35 °C ( 86400 s ) -25...40 °C

## Packing Units

<b>Unit Type of Package 1</b>	PCE
<b>Number of Units in Package 1</b>	1
<b>Package 1 Height</b>	11.300 cm
<b>Package 1 Width</b>	11.400 cm
<b>Package 1 Length</b>	25.500 cm
<b>Package 1 Weight</b>	680.000 g
<b>Unit Type of Package 2</b>	S03
<b>Number of Units in Package 2</b>	10
<b>Package 2 Height</b>	30.000 cm
<b>Package 2 Width</b>	30.000 cm
<b>Package 2 Length</b>	40.000 cm
<b>Package 2 Weight</b>	7.287 kg

## Contractual warranty

<b>Warranty (in months)</b>	18
-----------------------------	----



## Environmental Data

Schneider Electric aims to achieve Net Zero status by 2050 through supply chain partnerships, lower impact materials, and circularity via our ongoing “Use Better, Use Longer, Use Again” campaign to extend product lifetimes and recyclability.

[Environmental Data explained >](#)

[How we assess product sustainability >](#)



### Environmental footprint

Total lifecycle Carbon footprint	24 kg CO2 eq.
Carbon footprint of the manufacturing phase [A1 to A3]	4 kg CO2 eq.
Carbon footprint of the distribution phase [A4]	0.1 kg CO2 eq.
Carbon footprint of the installation phase [A5]	0 kg CO2 eq.
Carbon footprint of the use phase [B2, B3, B4, B6]	17 kg CO2 eq.
Carbon footprint of the end-of-life phase [C1 to C4]	2 kg CO2 eq.
Environmental Disclosure	<a href="#">Product Environmental Profile</a>

### Use Better



### Materials and Substances

Packaging made with recycled cardboard	Yes
Packaging without single use plastic	No
SCIP Number	661ec80b-b956-4b0a-92bb-53046f4cfb4c
EU RoHS Directive	<a href="#">Compliant By Exemption</a>
REACH Regulation	<a href="#">Reference contains Substances of Very High Concern above the threshold</a>
California proposition 65	<b>WARNING:</b> This product can expose you to chemicals including: Lead and lead compounds, which is known to the State of California to cause cancer and birth defects or other reproductive harm. For more information go to <a href="http://www.P65Warnings.ca.gov">www.P65Warnings.ca.gov</a>

### Use Longer



### Lifetime extension

Repair	No
--------	----

### Use Again



### Repack and remanufacture

Recyclability potential, in %	33
End of life manual availability	No need of specific recycling operations
Take-back	No
WEEE Label	 The product must be disposed on European Union markets following specific waste collection and never end up in rubbish bins