

20 713 892 Product version from 6/30/2009



- 165mm projection
- pivotable spout 360°
- circular, air-enriched flow
- height of mixer 285 mm
- height up to aerator 163 mm
- hole diameter valve 32 mm
- hole diameter spout 35 mm
- rosette Ø 55 mm
- 2x screw-in M 10 x 1 pressure hose, leak-tested
- max. flow 7 l/min
- lead-free
- WRAS
- This product can help a building meet the requirements of Green Building Rating Systems, e.g. LEED®, BREEAM®, DGNB

Only suitable for basins with an overflow.

| | | |
|---|-------------------------------------|---------------|
|  | Platinum | 20 713 892-08 |
|  | Chrome | 20 713 892-00 |
|  | Brushed Platinum | 20 713 892-06 |
|  | Dark Chrome | 20 713 892-19 |
|  | Brushed Durabronze (23kt Gold) | 20 713 892-28 |
|  | Matte Black | 20 713 892-33 |
|  | Brushed Gold (PVD) | 20 713 892-37 |
|  | Brushed Dark Brass (PVD) | 20 713 892-39 |
|  | Brushed Bronze (PVD) | 20 713 892-42 |
|  | Brushed Dark Bronze (PVD) | 20 713 892-43 |
|  | Brushed Champagne (22kt Gold) | 20 713 892-46 |
|  | Champagne (22kt Gold) | 20 713 892-47 |
|  | Brushed Chrome | 20 713 892-93 |
|  | Brushed Dark Platinum | 20 713 892-99 |

Recommended miscellaneous



High pressure hoses - 12 506 970 90
 • 2x 3/8" x 1/2" x 500mm high pressure hose



TARA Three-hole basin mixer with pop-up waste - Platinum

TARA

20 713 892 Product version from 6/30/2009

Certificates and sustainability

LGA_18

ETA_18

WRAS_2212

ACS_20 ACC LY

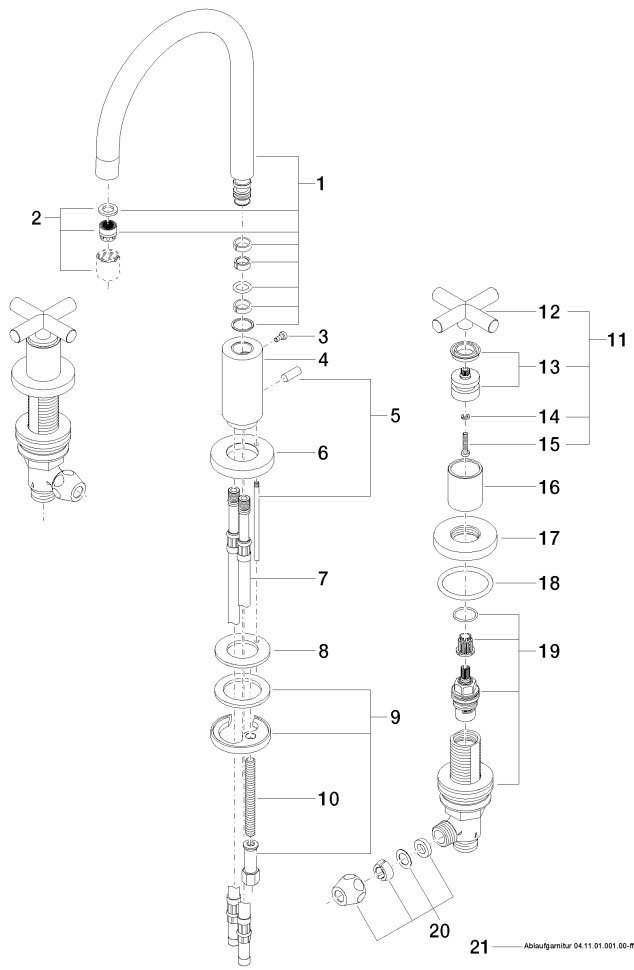
GDV_0400

EPD-DOR-20230287

-IBA1-EN

Environmental.prod

uct-declarat



Spare parts list

| No. | Item Number | Name | Quantity used | Delivery time |
|--|--------------------|---|---------------|---------------|
| 9 | 04 30 11 038 00 90 | Mounting with O-ring Ø40 x 4mm Ø 52 x 1,5 mm - | 1.00 | 14 |
| 18 | 90 14 10 043 00 90 | O-Ring 40,0 x 4,0 mm - | 2.00 | 14 |
| 1 | 90 28 22 213 00-08 | Spout 165 mm, 8,33 l/min. - Platinum | 1.00 | - |
| Spare part can no longer be ordered, please order the replacement item | | | | |
| 8 | 09 14 05 047 90 | Washer with drill hole Ø 48 x 27,2 x 3 mm - | 1.00 | 14 |
| 16 | 09 21 02 140-08 | Cover Ø 30 x 36 mm - Platinum | 2.00 | 54 |
| 20 | 90 23 30 040 00-08 | Union piece - Platinum | 2.00 | 54 |
| 7 | 04 30 04 064 00 90 | High pressure hose short shaft M10x1 x 420 mm - | 2.00 | - |
| Spare part can no longer be ordered, please order the replacement item | | | | |
| | 0430041040090 | High pressure hose M10x1 x 3/8" x 420 mm - | | |
| 13 | 90 12 12 007 00-08 | Handle Socket retainer Ø 29 x 26 mm - Platinum | 2.00 | 54 |
| 10 | 09 31 11 011 90 | Mounting Threaded bolt M8 x 80 mm - | 1.00 | 14 |
| 15 | 90 30 30 075 00 90 | Mounting Cylinder head screw with hexagon socket Low profile M4 x 20 mm - | 2.00 | 14 |
| 2 | 90 23 01 028 02-08 | Aerator low pressure M18xIG - Platinum | 1.00 | - |
| Spare part can no longer be ordered, please order the replacement item | | | | |
| 19 | 90 17 11 040 51 90 | Deck valve clockwise closing 1/2" - | 2.00 | 14 |
| 12 | 09 20 89 010-08 | Handle 70 x 70 x 22,5 mm - Platinum | 2.00 | - |
| Spare part can no longer be ordered, please order the replacement item | | | | |
| | 90208901010-08 | Handle TARA - Platinum | | |
| 11 | 90 20 89 010 10-08 | Handle TARA - Platinum | 2.00 | 54 |
| 21 | 90 11 01 001 00-08 | Basin Waste - Platinum | 1.00 | 54 |
| 14 | 90 30 11 029 00 90 | Connection Spring lock washer Ø 4 - | 2.00 | 14 |
| 6 | 09 28 10 133-08 | Rosette Ø 59 x Ø 27,5 x 9 mm - Platinum | 1.00 | 54 |
| 17 | 09 27 89 105-08 | Rosette Ø 55 x Ø 47,3 x 9 mm - Platinum | 2.00 | 54 |
| 5 | 04 20 89 030 80-08 | Pull rod for pop-up waste with button 17 x 158 x 7 mm - Platinum | 1.00 | 54 |
| 3 | 09 30 30 057 90 | Mounting Cylinder head screw with hexagon socket with low profile M4 x 8 mm - | 1.00 | 14 |
| 4 | 09 11 10 087 10-08 | Connection Ø 35 x 79 mm - Platinum | 1.00 | 54 |