

**PHILIPS**

Maxos fusion

Industry and retail lighting



Redefining  
the standard  
in trunking

# Contents



Meet Maxos fusion

4

Trunking for your applications

8

Optics overview

14

Circular economy



Interact

20

Customer stories

24

Range overview

30

Ordering information

# Meet Maxos fusion

Adaptable LED trunking system where quality, performance and flexibility meet

Maxos fusion  
.....  
Industry and retail lighting  
.....  
**Meet Maxos fusion**  
.....

Meet Maxos fusion



## High quality of light, excellent uniformity and color consistency

Maxos fusion offers multiple flux/beam and color choices, plus a portfolio of specially-designed OptiSuit lenses for unmatched performance with visibly superior quality of light.



## High efficiency and long life

With very high efficacy options (up to 185 lm/W) and very long lumen maintenance (100,000 hours @L85), designers can create optimized, bespoke solutions with an attractive total cost of ownership.



## Ready to connect

Dedicated sensor units enable you to take full advantage of Interact system propositions so you can make data-driven decisions in retail and industrial applications.



## Covers extensive applications

The ideal choice for a wide range of applications and lighting requirements from retail supermarkets and hypermarkets, to industry production floors and distribution centers and warehouses.



## Freedom to position and reposition

Maxos fusion rail is the flexible, future-proof trunk that underpins the system. Positioning freedom makes it easy to upgrade/add/change components on the rail to extend the life of the backbone.



## A solution for all

Maxos fusion rail accommodates up to 13 wires in the trunk, so it can handle a wide variety of electrical circuit options, including emergency lighting to fit specific project demands.

# The right light

In addition to helping you save on energy costs and improve sustainability, Maxos fusion gives you the power to design a store concept with a customizable ambience. Use the Maxos fusion trunking system as the flexible backbone enabling you to efficiently adapt to new store layouts or trends.



### Flexible layouts

The adaptable new lighting system is fast to install, reposition and maintain. You have the freedom to click the lighting unit along the line so it can be easily positioned and re-configured.

### Merchandise sparkles

Our new range of optics has been specially designed to create beautiful ambiances in retail environments. The pleasant, diffuse light makes all the merchandise on display sparkle. Maxos fusion panels with Premium White 930 bring out the best in every color and texture to further enhance your store merchandise, complementing the store experience and ensuring shoppers stay longer. Maxos fusion provides comfortable light that is easy on the eye.

### Future proof

Maxos fusion luminaires are connected. As the Internet of Things becomes an integral part of the retail experience, they are ready to collect data and can use the infrastructure to send data — even to your shoppers. The trunking is ready to be connected to an Interact connected lighting management system for advanced scene management and maximized energy and cost savings. Interact indoor navigation creates a kind of indoor GPS, enhancing the shopping experience.



# The right light for industrial applications

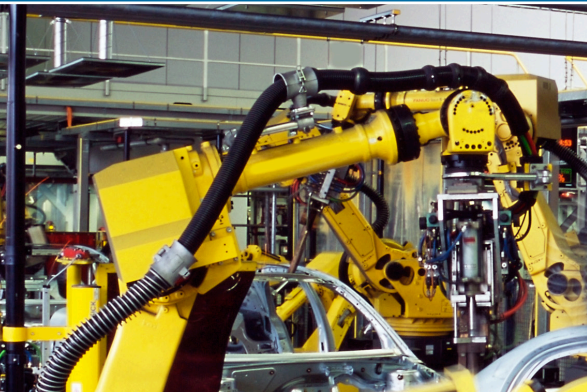
Creating a safe environment is the first priority for industrial spaces. Now you can comply with industry regulations at the same time as maximizing the value of your investment with Maxos fusion.

## Food production

- Maxos fusion complies with international food safety standards:
- Particles can't fall out of the Maxos fusion trunking and dust and moisture will not accumulate in the lighting unit, maintaining hygienic conditions.
  - No loose components and no glass in the lighting installation for optimized food safety.
  - Reduced power load compared to traditional systems (up to a factor of 2.5) ensures food production processes are not influenced by the lighting installation.
  - Easy to clean lighting equipment.

## Automotive

- Flexibility is key in the automotive industry. If the assembly line needs to be rearranged, Maxos fusion lighting can be adapted quickly.
- Maxos fusion prevents glare, helping to increase employee productivity and job satisfaction.
- Impact resistance and dust/water tightness are required on assembly lines. The optional IP54 solution combines both, resulting in a sturdy and reliable lighting solution.



### Excellent TCO

If you're looking for a general lighting solution with excellent performance, Maxos fusion offers a high level of energy savings and minimum maintenance costs over a long and reliable lifetime.

### Comply with regulations

Maxos fusion offers an extensive range of options to meet diverse industry application lighting requirements such as standard & emergency lighting, applications needing higher IP ratings (IP54). Maxos fusion is fully approved with the relevant industry safety norms providing for a compliant lighting system.

### Quality of light

Unlike conventional fluorescent installations, Maxos fusion provides outstanding quality of light. The light distribution is highly uniform without artefacts. And thanks to the wide variety of optics you can direct the light to precisely where it is required.

### Freedom of positioning

This adaptable lighting system is fast to install and easy to reposition and maintain. You have full freedom to click the lighting unit along the line, resulting in reduced downtime and the costs associated with layout changes. With up to 13 wires, it can also handle all emergency lighting schemes.

### Interact Ready

Maxos fusion is Interact Ready. By combining Maxos fusion luminaires with various kinds of sensors and the Interact lighting management software, you can define lighting zones, create dimming schedules, and implement other measures that optimize system energy savings.

## Warehouse and logistics

- Maxos fusion is silicone free, meeting specific requirements of the automotive industry and preventing issues in surface coating processes.
- Maxos fusion offers a high degree of flexibility to mount and reposition luminaires anywhere along the line. This accommodates tenant changes or change in usage very easily.
- Appropriate optics for areas with very high ceilings and narrow aisles provides the right lighting for employees and creates excellent visibility, and a safe environment in any type of warehouse.



# OptiSuit, a superior lighting choice



Optics overview





Specifying the right lighting for retail and industry requires finding the right balance between efficiency, performance, energy savings and safety. But in order to make a fully-informed lighting decision, you must also consider the quality of light, its color consistency and uniformity.

Why? Because these qualitative aspects bring different advantages to different applications. In retail environments, lighting creates attractive stores where people like to shop. In industrial settings, lighting enhances visual acuity, providing the right illumination to keep productivity high.

Another key is where the light actually falls, which is why optical distribution is so important. Thanks to the OptiSuit portfolio of lenses, Maxos fusion promises a superior choice of 11 different optical distributions. These uniquely-designed lenses provide the right light precisely where required, while maintaining the highest quality and uniformity of light for a consistent look and feel.

In addition to creating attraction, providing guidance and maximizing clarity, OptiSuit lens plates are also designed to optimize the:

- sleek appearance of the fixture
- consistency of light color in all directions
- glare limitation
- accent factor
- beam characteristics

### **Designed for modularity**

What makes the OptiSuit portfolio unique is its revolutionary concept. A series of precisely-designed lenses deliver and direct the light in the most efficient way possible, while maintaining consistent qualitative color parameters. This optical portfolio is used as a building block to develop linear panels for trunk mounting, or non-linear panels for track mounting. That means OptiSuit offers lighting designers and engineers a diverse range of luminaires with the same advantages, to create bespoke solutions that fulfil the exact requirements of retail or industrial applications. For example, OptiSuit can be used to create a linear LED panel (Maxos fusion) of up to 2.3 meters in length. Or it can be used to create a rectangular panel (StoreSet) of 200 mm x 600 mm.

### **Optimized for a wide range of applications**

The OptiSuit portfolio is suitable for a wide range of applications, from high bay and low bay areas, to small narrow corridors and large open spaces. Due to the unique shape of the lenses, the light emitted by each LED is transformed in such a way that, collectively, they provide high quality light that is directed for a specific purpose. For example, some OptiSuit optics are dedicated to back office and general lighting requirements. Others are especially designed for retail aisles, directing light to shelves and displays to attract more attention to the merchandise. And some are intended to optimize the routing of people and products in factory or warehouse environments.

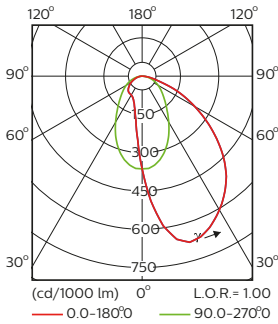
### A choice of beam characteristics

In terms of lighting design, light distribution is just as important as visual comfort. With a portfolio of 10 well-balanced beam options from extra narrow to very wide, OptiSuit can optimize the lighting in every application (see below). All beams are characterized by a very smooth, continuous beam shape, ensuring there are no visible luminance discontinuities on illuminated surfaces.

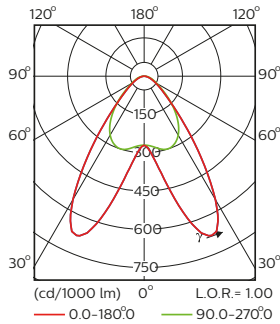
Looking for dedicated retail lighting? Maxos fusion with OptiSuit offers you a portfolio of seven different

light beams. Combined with a choice of lighting colors and lumen packages, this means you can specify Maxos fusion for virtually any and every retail aisle geometry.

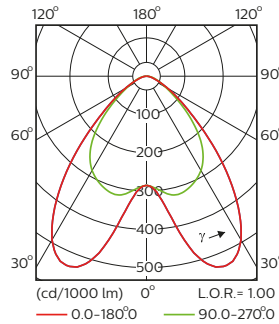
## The complete OptiSuit beam portfolio for retail lighting applications



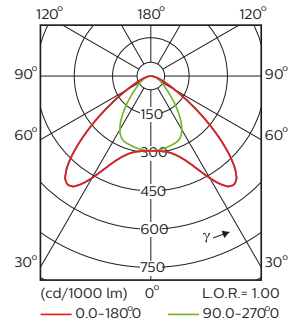
**A20** (Asymmetric beam)



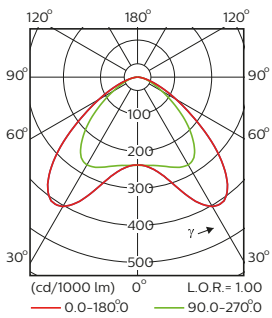
**DA25N** (Double asymmetric Narrow)



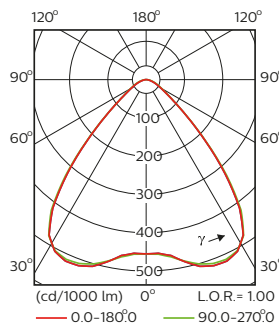
**DA25W** (Double asymmetric Wide)



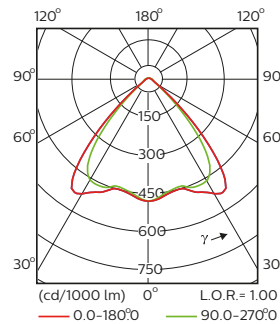
**DA35W** (Double asymmetric Wide)



**DA45** (Double asymmetric)

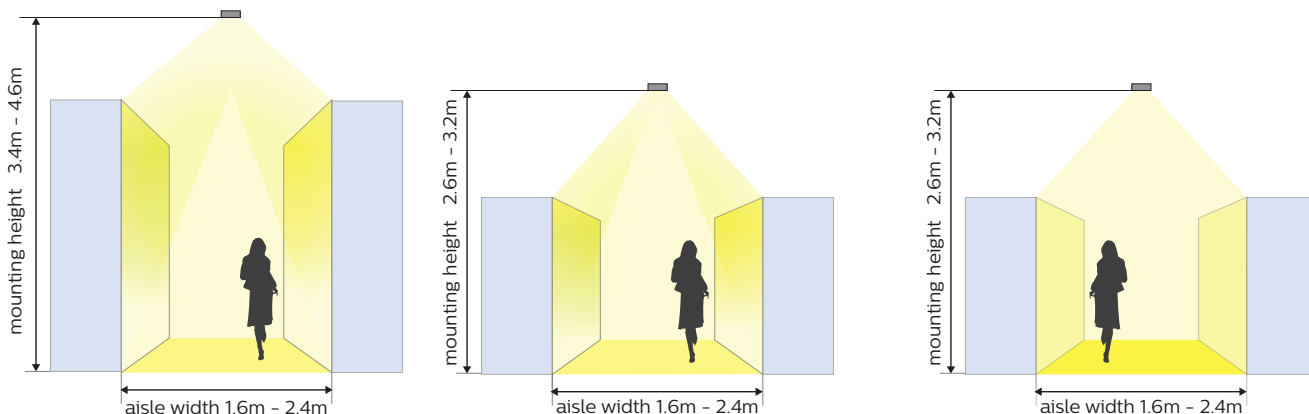


**WB** (Wide beam)



**WB-OC** (Wide beam - Office compliant)

## Retail aisles



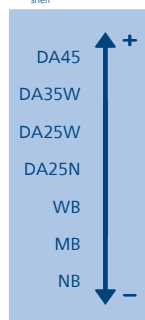
Contrast on vertical shelf

Focus on horizontal illuminance

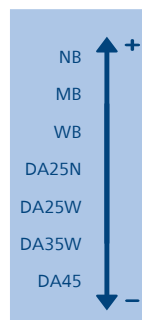
The balance between contrast on the vertical shelf and horizontal illuminance can be adjusted by varying the beam choice.

Recommended optics in retail stores		Aisle width [m]				
		1.6	1.8	2.0	2.2	2.4
Mounting height [m]	4.8	NB	NB	MB	DA25N	DA25N
	3.6	DA25N WB	DA25N WB	DA25N WB	DA25N	DA25N
	3.2	WB	DA25W DA25N WB	DA25W DA25N WB	DA35W DA25W DA25N	DA25W DA25N
	2.8	DA25W DA25N WB	DA25W DA25N WB	DA45 DA35W DA25W	DA45 DA35W	DA45 DA35W
	2.6	DA25W WB	DA35W DA25W WB	DA45 DA35W WB	DA45	DA45

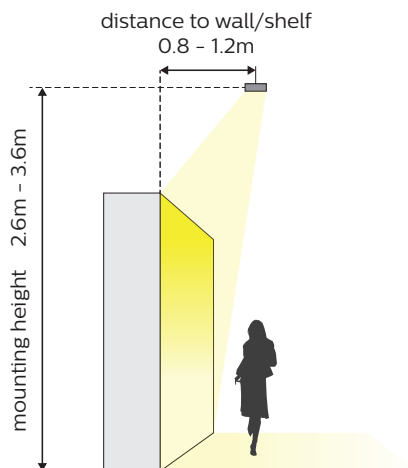
Contrast on vertical shelf  
 $(h_{shelf} < 2.2m)$ :



Horizontal illuminance



## Retail walls

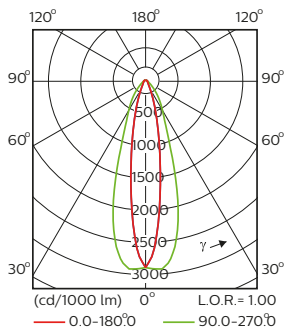


Recommended optics in retail stores		Aisle width [m]				
		1.6	1.8	2.0	2.2	2.4
Mounting height [m]	3.6				A20	A20
	3.4			A20	A20	A20
	3.2			A20	A20	A20
	3.0			A20	A20	A20
	2.8	A20	A20	A20	A20	A20
	2.6	A20	A20	A20	A20	A20

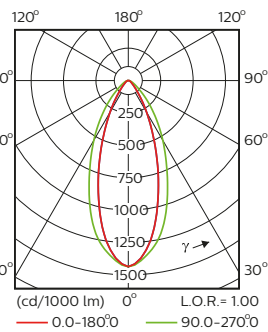
\*Height of wall is mounting height - 0.5m

The asymmetric OptiSuit optic has a very wide application coverage.

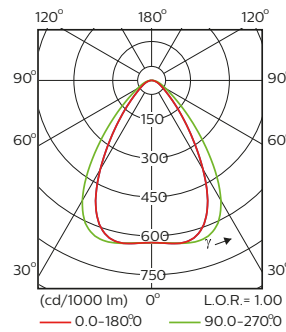
# The complete OptiSuit beam portfolio for industry lighting applications



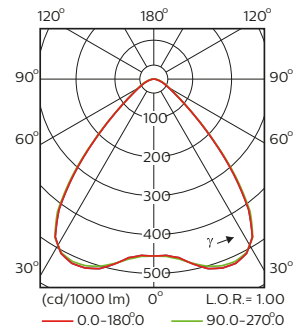
**XNB** (Extra narrow beam)



**NB** (Narrow beam)



**MB** (Medium beam)

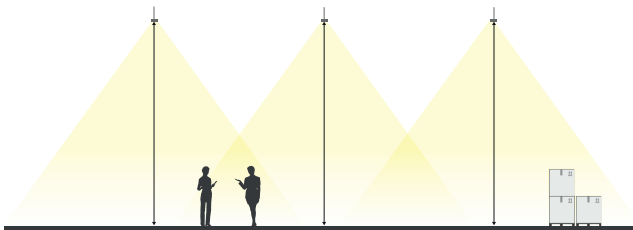


**WB** (Wide beam)

In industrial applications, OptiSuit offers four beam options ranging from a normal downward beam to wide beam options, six lumen packages, and two energy choices. In retail and industry lighting applications, functional lighting for back room offices, control rooms

and cash areas that require a low direct glare (UGR 19), specify the WB-OC optic for optimized performance.

## Open spaces

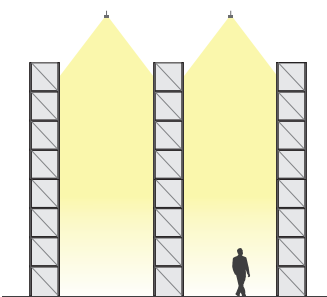


Wide, medium and narrow beam OptiSuit optics are recommended for open spaces depending on mounting height and required illuminance.

Recommended optics in open spaces*		Mounting height of light line [m]				
		3	6	9	12	15
Illuminance [lux]	750	WB	MB	MB	NB	NB
	500	WB	MB	MB	NB	NB
	300	WB	WB	MB	MB	NB
	200	WB	WB	WB	MB	NB

\*Depending on space dimensions

## Warehouses



A combination of wide, medium and narrow beam OptiSuit™ optics are suitable for warehouses.

Recommended optics in warehouses*		Mounting height of light line [m]				
		3	6	9	12	15
Illuminance [lux]	300	WB	MB	NB	NB	XNB
	200	WB	MB	NB	NB	XNB
	150	WB	MB	NB	NB	XNB

\*Depending on space dimensions

# Introducing Maxos fusion XA

Maxos fusion  
.....  
Industry and  
retail lighting  
.....  
Maxos  
fusion XA  
.....

Energy consumption will always be a priority for commercial customers. Maxos fusion XA is an economical choice with very high efficacy as one of its many benefits. What's more, with lumen maintenance of 100,000 hours @L85, it offers even more possibilities to optimize your lighting design. Not only does the long lifetime enable better planning, but maintenance avoidance also contributes toward a more attractive total cost of ownership— a key consideration in both retail and industrial applications.



Maxos fusion

Specifications			
Electrical unit	Efficacy	Lumen maintenance (50K hrs)*	Lumen maintenance (100K hrs)
LL512X and LL523X	up to 151 lm/W	L95	
LL512X HE and LL523X HE	up to 179 lm/W	L95	L85
LL512X XA and LL523X XA	up to 185 lm/W	L95	L85

\* for the standard version LL523X LED160S - lumen depreciation @50k hrs is L80



# Bringing you benefits with our circular economy approach

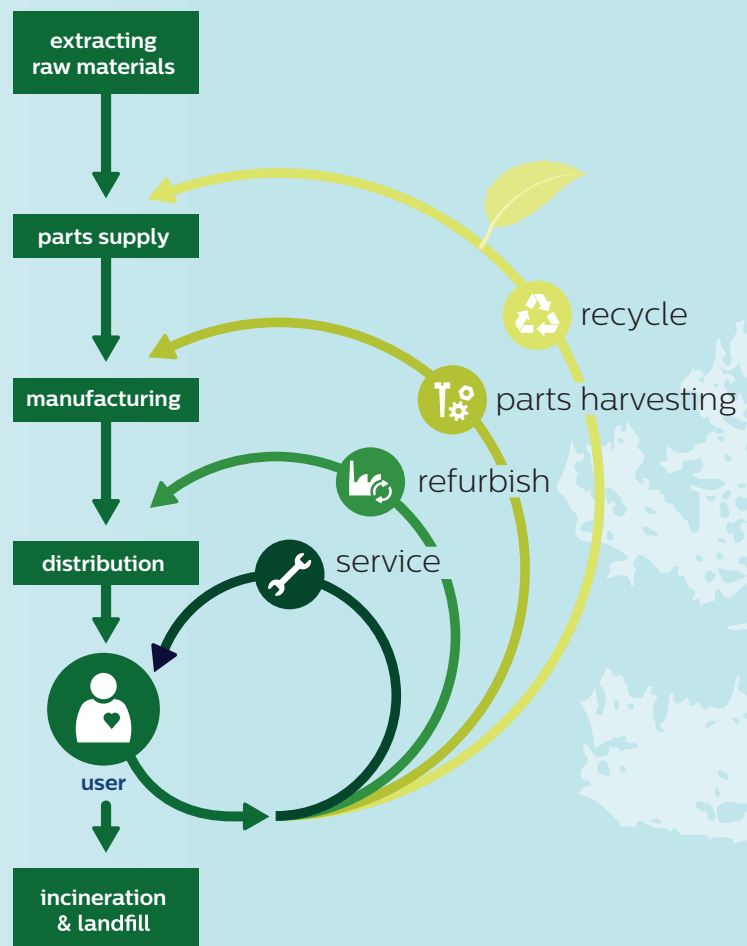


## What if...

...we enable your luminaires to meet your evolving needs beyond their rated service life from start to finish – including service and repair, upgrades and replacements – while you enjoy the best

Because in a truly circular economy, everyone benefits - including our planet. And because our purpose is to unlock the extraordinary potential of light for brighter lives and a better world. With our circular approach, we source and use renewable materials in our luminaires and components, while reducing landfill waste. We join forces with our customers, offering energy-efficient luminaires with easy maintenance, repair, upgrades and replacement. Maintenance services are designed to be simple, fast and efficient, saving you time and money. And of course, we provide sophisticated technological upgrades, as and where needed to keep your lighting fit for purpose.

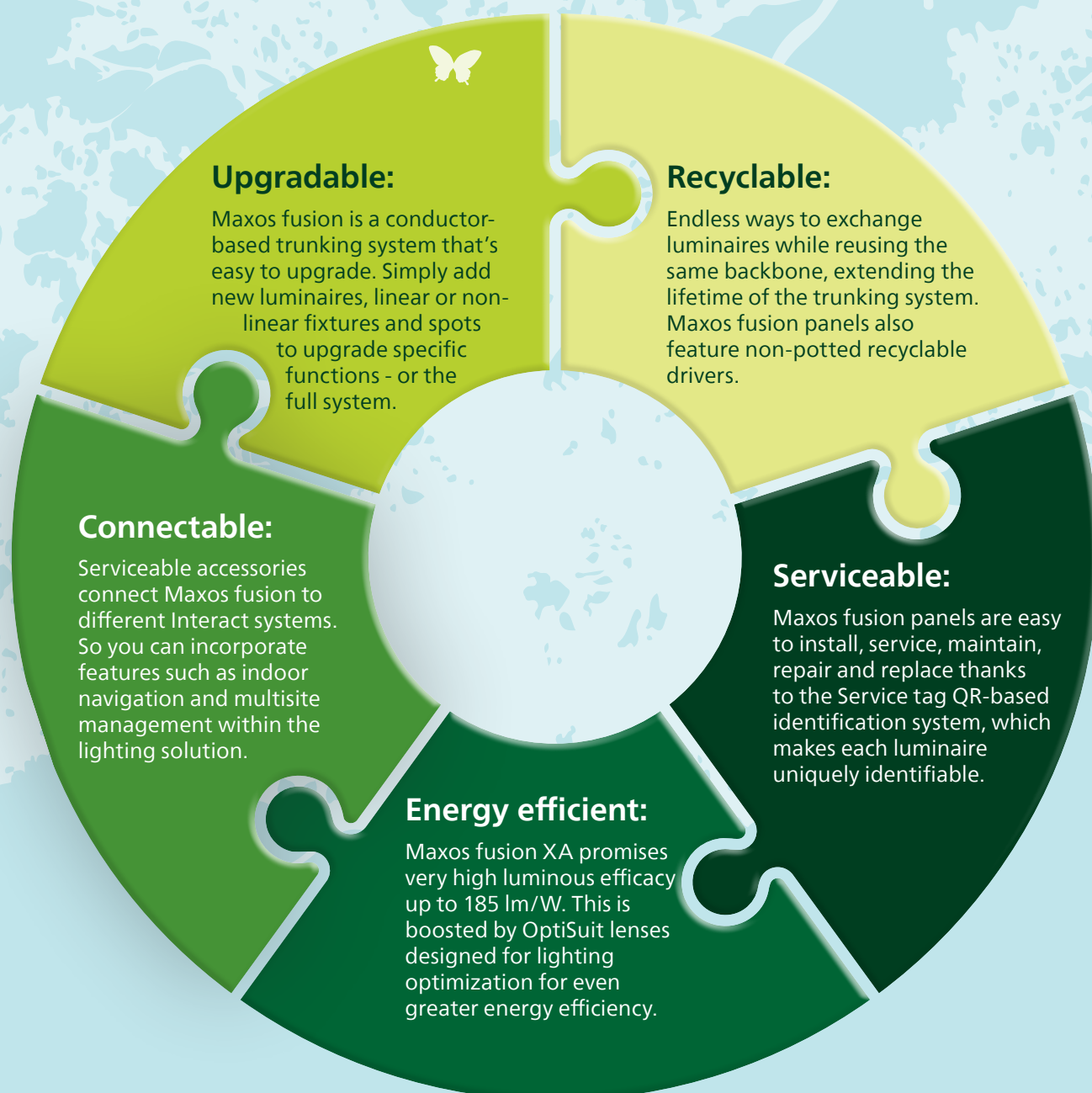
Our circular lighting solutions include innovative managed service models with end-of contract options, intelligent asset management systems and circular economy ready luminaires, guaranteeing optimal performance. We work with partners to ensure collection and recycling of end-of-life components and luminaires. You benefit from immediate cost savings resulting from long-term functionality. Not to mention the least possible environmental impact.



Lifecycle assessments have been conducted

# We've designed luminaires for outdoor and indoor use with the circular economy in mind.

## Get ready to meet 5 vital benefits for our customers and our planet.



interact

AITEUR



Interact

# Bring your Maxos fusion to the next level with Interact

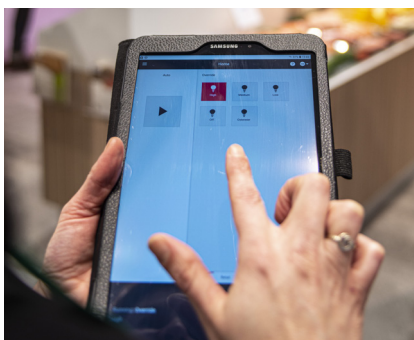
Interact connected lighting systems share data and integrate with your other smart retail solutions. Maxos fusion luminaires are Interact Ready, allowing you to deploy Interact connected applications throughout your illuminated retail spaces.



# Interact capabilities for retail applications

## Scene management

Interact Scene management allows you to create stunning and flexible retail spaces, using light to create a memorable shopping experience. With Interact Scene management you can easily adjust the lighting for different moments of the day, seasons and events to reinforce your brand, increase sales, or boost return visits.



## Indoor navigation

Interact Indoor navigation supports personalized, convenient shopping and new staff efficiencies with hyper-accurate indoor positioning powered by technology embedded in LED luminaires. When integrated into a retailer app, Interact Indoor positioning helps shoppers find products, take advantage of pop-up promotions, or even see recipe suggestions for the ingredients they are about to purchase. It can help staff when restocking shelves or fulfilling an online order.



## Multisite management

Interact Multisite management allows you to monitor and manage multiple stores and retail distribution centers remotely from a single dashboard. It gives insights into energy savings and lighting failures and allows managing lighting schedules and scenes for a chain of stores.



## Sensor units

Unlocking the potential of Maxos fusion with Interact

### Bluetooth beacon LL500E

- A world of extra possibilities with in-pocket notifications
- Easily plugged into the backbone



interact

# Bring your Maxos fusion to the next level with Interact

All sensor ready Maxos fusion panels are compatible with Interact. Interact enables users to optimize efficiency, maximize energy savings and improve productivity and safety.

Interact connected lighting systems share data and integrate with your other smart industry solutions.

Interact connected lighting provides lighting management and value-added applications through

insights and data. Centralized lighting management helps reduce operational costs, track compliance and plan maintenance efficiently.

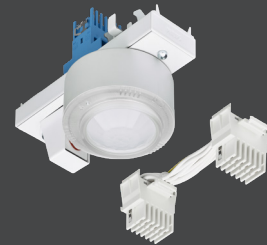




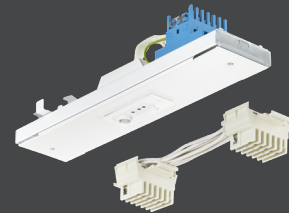
## Sensor units

To maximize the potential of system connectivity, all sensor ready Maxos fusion panels are compatible with Interact.

**Interact**  
**LL500E H4**  
sensor unit



**LL500E IA4**  
sensor unit

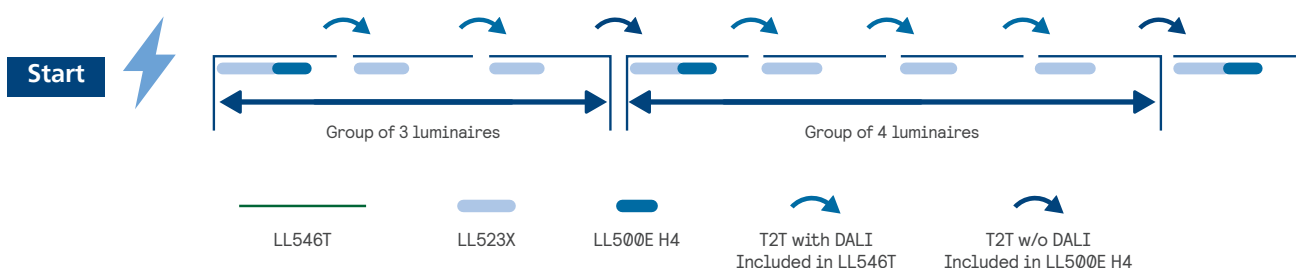


## System specifications

So how does it work in practice? The sensor is shown in green in the diagram below (LL500E H4). It communicates with multiple luminaires via the SR protocol, which is enabled throughout the Maxos fusion trunking.

You can divide the network into zones, grouping luminaires together so they act in exactly the same way. Groups of luminaires can also be defined and controlled by the Track-2-Track (T2T) connectors without a DALI interface (as included with the sensor unit).

One sensor can control up to four luminaires, which can be grouped in various ways. This enables you to customize the lighting in an area to create the right lighting scene for its specific use.



## Customer stories Netto 3.0



“

The great advantage of Maxos fusion lighting is not only good lighting quality, but more importantly, energy efficiency and cost effectiveness. In 2020 we are planning on opening over 40 stores in accordance with our 'Netto 3.0' concept using a range of Philips products.”

**Wojciech Wolny**  
Manager at Netto's Technical Department

## Netto 3.0

Netto 3.0 is the latest concept of Danish chain store Netto, which has had a presence in the Polish market for the past 24 years. With 380 locations, they are one of the biggest retail brands in Poland and more importantly; they offer a unique concept to their customers with —“Netto 3.0”—. Netto stores offer quality products according the latest trends, which come to life in the stores, using background music and the right lighting. The result: a successful and tailored customer experience, perfectly fitting the concept of the stores.

The basis for this lighting solution is a Maxos fusion trunking system that offers unmatched freedom and flexibility. The system comes with the option to integrate nonlinear StoreSet luminaires, linear Maxos fusion modules and StyleID Evo accent lighting. This is particularly important in commercial spaces that need to create attractive product displays to attract customers. The unique ambiance can be further enhanced using a variety of fixtures. Netto chose black trunking lines and fixtures for their stores to create the impression of an elegant interior.

With the Maxos fusion solution at Netto, modern and efficient LED technology is brought into all stores, delivering exactly the right amount of light where it's needed and reducing energy costs by over 50% compared to solutions based on traditional lamps.

“

Thanks to the cooperation with Signify we could fully implement the ideas behind our 'Netto 3.0' concept. In our Gdansk location, we have used high-end lighting products like Maxos fusion designed by Philips and that marks just the beginning of our cooperation.”

**Wojciech Wolny**  
Manager at Netto's Technical Department

# Customer stories Velleman

Customer stories



“

Not only us, but also our employees are very satisfied with the result. The excellent light makes a very positive contribution to our employees' productivity.”

Bruno Loosveldt  
Logistics manager Velleman



## Velleman

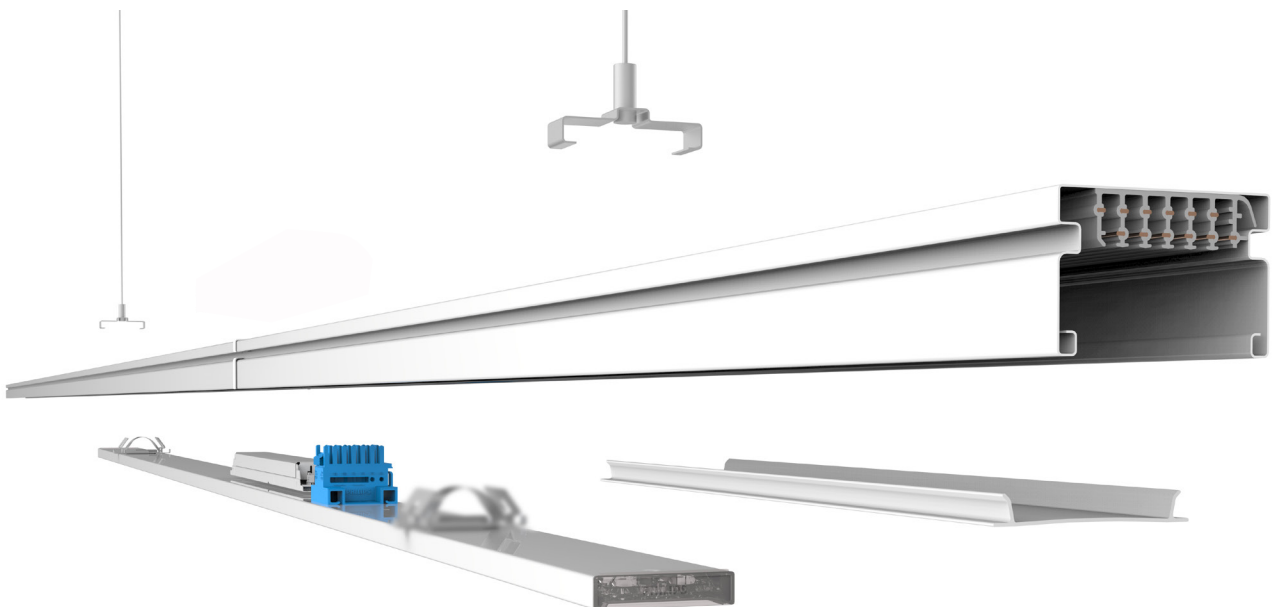
Velleman is a Belgian producer and distributor of electronics, operating from their 8,000 m<sup>2</sup> warehouse in Gavere, Belgium. Here, the old gas discharge lamps were no longer adequate, so the aim was to replace them with a sustainable lighting solution. The aim was to increase light levels in the warehouse to improve visibility and create an attractive working environment, at the same time as delivering significant energy savings. After conducting a test with different providers, Velleman chose the Maxos fusion solution, in combination with GreenWarehouse.

The project was executed by EnergyVision (Ghent, Belgium), a specialist in energy efficiency. Some project numbers:

- **225 Maxos fusion light lines**, extending to 1.1 kilometers.
- **3 times higher illuminance** at floor level - from 50 lux to 170 lux - meeting international standards.
- **50% energy savings** compared to the original lighting installation, by installing LED-based lighting.
- **20% extra energy savings** by using sensors to switch off the lighting when no one is present.

# Range overview

This diagram provides an overview of the components available for the Maxos fusion trunking system. The vertical columns refer to system configurations. The horizontal columns indicate the choice of specific types of components.





<b>SUSPENSION BRACKETS</b>																	
in black, silver and white	<b>CB-CH</b> Chain bracket, adjustable	<b>CDS</b> Cable duct suspension	<b>MB-SW</b> Mounting bracket suspension wire	<b>PB</b> Profile bracket	<b>SMB</b> Surface mounting bracket												
<b>TRUNKINGS</b>	7 wires			9 wires		13 wires											
in black, silver and white																	
<b>PANELS</b>																	
in black, silver and white																	
<b>ADDITIONAL PRODUCTS</b>																	
in black, silver and white (SPA & SW stainless steel only)	<b>LL500Z 2xEP CU</b>	<b>LL500E IA4 SR2DALI</b>	<b>CD</b> Cable duct	<b>LL500Z BC</b>	<b>LL500Z SPA-CD</b> Spacer	<b>LL500Z SW2</b> Suspension wire	<b>LL500Z CM L400 &amp; L550</b>	<b>LL500Z BA</b> Base plate	<b>LL500E H4</b> Sensor unit	<b>LL500Z MOD-DE / MOD-UK / MOD-FR</b> Power socket	<b>LL500E BLE</b> Bluetooth beacon	<b>LL500E IA4</b> Sensor unit	<b>LL500E H4 SR2DALI</b> Sensor unit	<b>LL500Z CPX</b> X coupling piece	<b>LL500Z CPL</b> L Coupling piece	<b>LL500Z CPT</b> T coupling piece	<b>LL500E 3C</b> 3C Track

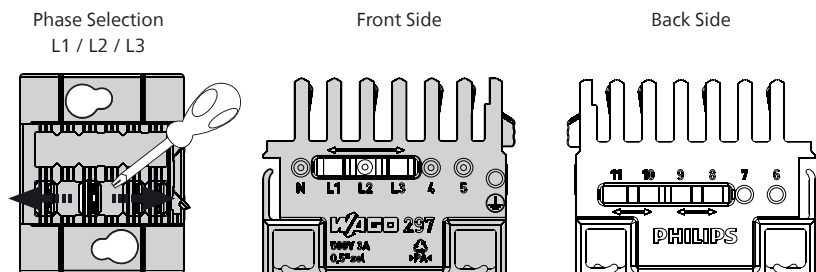
The full range is available in black (BK), silver (SI) and white (WH).

# Trunking

Trunk rail IP20			
Family code	Length (m)	Circuit	Color
LL512T	1,15	4x2.5 + 2x1.5	White, WH (RAL9003)
LL523T	2,30	4x2.5 + 4x1.5	Silver, SI (RAL9006)
LL546T	4,60	4x2.5 + 8x1.5	Black, BK (RAL9004)

Trunk rail IP54			
Family code	Length (m)	Circuit	Color
LL623T	2,30	4x2.5 + 2x1.5	White, WH (RAL9003)
LL646T	4,60	4x2.5 + 8x1.5	

## Wiring selection



Family code			Front side					Back side					Trunk compatibility		
			L1	L2	L3	4	5	6	7	8	9	10	11	LL...T 7...	LL...T 9...
DIA7 /SIA7/ PSD7	PE	N	←	L	→	DA+/SR+	DA-/SR-						✓	✓	✓
DIA13 ELP / SIA13 ELP/ PSD13 ELP	PE	N	←	L	→	DA+/SR+	DA-/SR-	LL / NN **					✗	✓	✓
DIA13 ELD / SIA13 ELD/ #	PE	N	←	L	→	DA+/SR+	DA-/SR-	LL, NN / DA+, DA- **					✗	✗	✓
DEIA7 / SEIA7 /PSED7	PE	N	←	L	→	DA+/SR+	DA-/SR-						✓	✓	✓
DEIA13 /SEIA13 /PSED13	PE	*	←	L	→	DA+/SR+	DA-/SR-				*		✗	✓	✓

# - PSD13 ELD /SIA13 ELW3

\* Wires to be connected by installer (available PINs: N,L1-L3, 6-11)

\*\* Wires to be connected by installer (available PINs: 6-11)

\*\*\* Emergency lines NN, LL can be connected to 6 and 7 only

\*\*\*\* Available lines in the trunk (N, L1-L3, 4, 5, 6, 7)

# Electrical units

Linear panel IP20*									
Family code	Versions	Luminous flux (lumen)	Light color code	Driver	Controls	Optics	Emergency lighting	Circuit option	Color finishing
LL512X	Standard	3100	830	PSD	CLO	WB		7	White WH
	HE	5000	835	PSED	VLC	WB-OC**		13	(RAL9003)
	XA	6150	840	SRD		MB			Silver SI
		8000	850	SRED		NB			(RAL9006)
			865			XNB			Black BK
			PW930		DA25N			(RAL9004)	
LL523X		6200	940			DA25W	ELP3		
		10100				DA35W	ELD3		
		12300				DA45	ELW3		
		16000				A20			
						PCO			

CLO = Constant Light Output  
 VLC = Visual Light Communication (indoor navigation, Yellow Dot compliant)  
 DIA = DALI dimming interact system ready  
 DEIA = DALI dimming interact system ready, for central emergency lighting  
 PSD = Power supply DALI  
 PSED = designed for central emergency lighting  
 SIA = Sensor Ready driver interact system ready  
 SEIA = Sensor Ready driver interact system ready, for central emergency lighting

ELP3 = Pro version (standard emergency)  
 ELD3 = DALI feedback  
 EL..3 = 3hrs 300lm  
 HE = High Efficacy (upto 179lm/W) and 100k hrs @ L85)  
 XA = Xtra (up to 185 lm/W and 100 khrs @ L85)  
 \* = Please contact Signify representatives for specific configurations  
 \*\* = for lowest lumen per length

Linear panel IP54								
Family code	Luminous flux (lumen)*	Light color code	Driver	Controls	Optics	Emergency lighting	Circuit option	Color finishing
LL612X	3100	830	PSD	CLO	WB		7	White WH
	5000	840	PSED		MB		13	(RAL9003)
	6150				NB			
					XNB			
LL623X	6200					ELP3		
	10100					ELD3		
	12300					ELW3		

CLO = Constant Light Output  
 PSED = designed for central emergency lighting  
 ELP3 = Pro version (standard emergency)  
 ELD3 = DALI feedback  
 EL..3 = 3hrs 300lm  
 ELW3 = for InterAct Enterprise  
 \* = due to IP54 up to 10% less

 Visit the Maxos fusion **online configurator**

# Ordering information\*

Maxos fusion IP20							
Line	Linear panel		Trunking rail			Mounting and electrical accessories	
	LL512X	LL523X	LL512T	LL523T	LL546T	LL500Z CB or LL500Z MB-SW	LL500Z 2xEP CU
Unit	1.138m	2.276m	1.138m	2.276m	4.552m	Chain bracket or Mounting bracket with wire*	End piece including coupling unit
1.138	1		1			2	1
2.28		1		1		2	1
3.41	1	1	1	1		3	1
4.55		2			1	2	1
5.69	1	2	1		1	3	1
6.83		3		1	1	3	1
7.97	1	3	1	1	1	4	1
9.10		4			2	3	1
10.24	1	4	1		2	4	1
11.38		5		1	2	4	1
12.52	1	5	1	1	2	5	1
13.66		6			3	4	1
14.79	1	6	1		3	5	1
15.93		7		1	3	5	1
17.07	1	7	1	1	3	6	1
18.21		8			4	5	1
19.35	1	8	1		4	6	1
20.48		9		1	4	6	1
21.62	1	9	1	1	4	7	1
22.76		10			5	6	1
23.90	1	10	1		5	7	1
25.04		11		1	5	7	1
26.17	1	11	1	1	5	8	1
27.31		12			6	7	1
29.59		13		1	6	8	1
31.86		14			7	8	1
34.14		15		1	7	9	1
36.42		16			8	9	1
38.69		17		1	8	10	1
40.97		18			9	10	1

\* Assumptions:

1. Line is assumed to be fully occupied only with Maxos fusion panels.
2. The starter kit for side entry (LL500Z 2x EP CU WH) is the default assumed feed in connection
3. The default MCB consideration is Type B 16A
4. The voltage drop from mains supply to beginning of light line is not considered
5. The voltage drop over the trunking should not exceed 5%.
6. The starter kit for mid entry (LL500Z CM) doubles the maximum trunking length
7. Ask the installer for advice when the trunking line exceeds 120 m (B-16 A).
8. For additional configurations such as semi-continuous line, please contact your Philips representative.

Maxos fusion IP20							
Line \ Unit	Linear panel		Trunking rail			Mounting and electrical accessories	
	LL512X	LL523X	LL512T	LL523T	LL546T	LL500Z CB or LL500Z MB-SW	LL500Z 2xEP CU
	1.138m	2.276m	1.138m	2.276m	4.552m	Chain bracket or Mounting bracket with wire*	End piece including coupling unit
43.24		19		1	9	11	1
45.52		20			10	11	1
47.80		21		1	10	12	1
50.07		22			11	12	1
52.35		23		1	11	13	1
54.62		24			12	13	1
56.90		25		1	12	14	1
59.18		26			13	14	1
61.45		27		1	13	15	1
63.73		28			14	15	1
66.00		29		1	14	16	1
68.28		30			15	16	1
70.56		31		1	15	17	1
72.83		32			16	17	1
75.11		33		1	16	18	1
77.38		34			17	18	1
79.66		35		1	17	19	1
81.94		36			18	19	1
84.21		37		1	18	20	1
86.49		38			19	20	1
88.76		39		1	19	21	1
91.04		40			20	21	1
93.32		41		1	20	22	1
95.59		42			21	22	1
97.87		43		1	21	23	1
100.14		44			22	23	1
102.42		45		1	22	24	1
104.70		46			23	24	1
106.97		47		1	23	25	1
109.25		48			24	25	1

\* Assumptions:

1. Line is assumed to be fully occupied only with Maxos fusion panels.
2. The starter kit for side entry (LL500Z 2x EP CU WH) is the default assumed feed in connection
3. The default MCB consideration is Type B 16A
4. The voltage drop from mains supply to beginning of light line is not considered
5. The voltage drop over the trunking should not exceed 5%.
6. The starter kit for mid entry (LL500Z CM) doubles the maximum trunking length
7. Ask the installer for advice when the trunking line exceeds 120 m (B-16 A).
8. For additional configurations such as semi-continuous line, please contact your Philips representative.

IP54 configuration options.  
Please contact us for more information and alternatives.

## Option 1

This line starts with a linear panel IP54 and alternates with IP54 blind covers.

Trunking LL646T and LL623T can be combined in one line

1a



Length trunking line (m)	Trunking unit		Linear panel		Blind covers LL600Z BC .....				Required accessories		
	LL623T	LL646T	LL612X	LL623X	L520	L1040	L1090	L2180	LL500Z CPE	LL500Z CB-CH / MB-SW	LL500Z 2xEP CU
2,30	1		1			1				2	1
4,60		1		1				1		2	1
6,90	1	1	1	1		1		1	1	3	1
9,20		2		2				2	1	3	1
11,50	1	2	1	2		1		2	2	4	1
13,80		3		3				3	2	4	1
16,10	1	3	1	3		1		3	3	5	1
18,40		4		4				4	3	5	1
20,70	1	4	1	4		1		4	4	6	1
23,00		5		5				5	4	6	1
25,30	1	5	1	5		1		5	5	7	1

1b



Length trunking line (m)	Trunking unit		Linear panel		Blind covers LL600Z BC .....				Required accessories		
	LL623T	LL646T	LL612X	LL623X	L520	L1040	L1090	L2180	LL500Z CPE	LL500Z CB-CH / MB-SW	LL500Z 2xEP CU
2,30	1		1			1				2	1
4,60		1	2			2				2	1
6,90	1	1	3			3			1	3	1
9,20		2	4			4			1	3	1
11,50	1	2	5			5			2	4	1
13,80		3	6			6			2	4	1
16,10	1	3	7			7			3	5	1
18,40		4	8			8			3	5	1
20,70	1	4	9			9			4	6	1
23,00		5	10			10			4	6	1
25,30	1	5	11			11			5	7	1

## Option 2

This line starts with an IP54 blind cover and alternates with IP54 linear panels. Trunking LL646T and LL623T can be combined in one line

2a

LL646T trunking			≠	LL646T trunking		
LL600Z BC L1090	LL623X linear panel	LL600Z BC L1090		LL600Z BC L1090	LL623X linear panel	LL600Z BC L1090

Length trunking line (m)	Trunking unit		Linear panel		Blind covers LL600Z BC .....				Required accessories		
	LL623T	LL646T	LL612X	LL623X	L520	L1040	L1090	L2180	LL500Z CPE	LL500Z CB-CH / MB-SW	LL500Z 2xEP CU
4,60		1		1			2			2	1
9,20		2		2			2	1	1	3	1
13,80		3		3			2	2	2	4	1
18,40		4		4			2	3	3	5	1
23,00		5		5			2	4	4	6	1

2b

LL646T trunking					≠
LL600Z BC L520	LL612X	LL600Z BC L1040	LL612X	LL600Z BC L520	

Length trunking line (m)	Trunking unit		Linear panel		Blind covers LL600Z BC .....				Required accessories		
	LL623T	LL646T	LL612X	LL623X	L520	L1040	L1090	L2180	LL500Z CPE	LL500Z CB-CH / MB-SW	LL500Z 2xEP CU
2,30	1		1		2					2	1
4,60		1	2		2	1				2	1
6,90	1	1	3		2	2			1	3	1
9,20		2	4		2	3			1	3	1
11,50	1	2	5		2	4			2	4	1
13,80		3	6		2	5			2	4	1
16,10	1	3	7		2	6			3	5	1
18,40		4	8		2	7			3	5	1
20,70	1	4	9		2	8			4	6	1
23,00		5	10		2	9			4	6	1
25,30	1	5	11		2	10			5	7	1

# Ordering information and European ordering codes

Trunk rail	
Trunkings IP20	EOC
LL512T 4X2.5+2X1.5 GEN2 WH	872016942516399
LL512T 4X2.5+8X1.5 GEN2 WH	872016942517099
LL523T 4X2.5+2X1.5 GEN2 WH	872016942518799
LL523T 4X2.5+8X1.5 GEN2 WH	872016942519499
LL546T 4X2.5+2X1.5 GEN2 WH	872016942520099
LL546T 4X2.5+8X1.5 GEN2 WH	872016942521799
LL512T 4X2.5+2X1.5 GEN2 SI	872016942522499
LL512T 4X2.5+8X1.5 GEN2 SI	872016942523199
LL523T 4X2.5+2X1.5 GEN2 SI	872016942524899
LL523T 4X2.5+8X1.5 GEN2 SI	872016942525599
LL546T 4X2.5+2X1.5 GEN2 SI	872016942526299
LL546T 4X2.5+8X1.5 GEN2 SI	872016942527999
LL512T 4X2.5+2X1.5 GEN2 BK	872016942528699
LL512T 4X2.5+8X1.5 GEN2 BK	872016942529399
LL523T 4X2.5+2X1.5 GEN2 BK	872016942530999
LL523T 4X2.5+8X1.5 GEN2 BK	872016942531699
LL546T 4X2.5+2X1.5 GEN2 BK	872016942532399
LL546T 4X2.5+8X1.5 GEN2 BK	872016942533099
LL523T 4X2.5+4X1.5 GEN2 WH	872016942538599
LL546T 4X2.5+4X1.5 GEN2 WH	872016942539299
LL512T 4X2.5+4X1.5 GEN2 SI	872016942540899
LL523T 4X2.5+4X1.5 GEN2 SI	872016942541599
LL512T 4X2.5+4X1.5 GEN2 WH	872016942542299
LL546T 4X2.5+4X1.5 GEN2 SI	872016942543999
LL512T 4X2.5+4X1.5 GEN2 BK	872016942544699
LL523T 4X2.5+4X1.5 GEN2 BK	872016942545399
LL546T 4X2.5+4X1.5 GEN2 BK	872016942546099
LL512T 4X2.5+2X1.5 GEN2 WH 1PCS	871951477234200
LL512T 4X2.5+8X1.5 GEN2 WH 1PCS	871951477235900
LL523T 4X2.5+2X1.5 GEN2 WH 1PCS	871951477236600
LL546T 4X2.5+2X1.5 GEN2 WH 1PCS	871951477237300
LL512T 4X2.5+2X1.5 GEN2 SI 1PCS	871951477238000
LL512T 4X2.5+8X1.5 GEN2 SI 1PCS	871951477239700
LL523T 4X2.5+2X1.5 GEN2 SI 1PCS	871951477240300
LL523T 4X2.5+8X1.5 GEN2 SI 1PCS	871951477241000
LL546T 4X2.5+2X1.5 GEN2 SI 1PCS	871951477242700
LL546T 4X2.5+8X1.5 GEN2 SI 1PCS	871951477243400
LL512T 4X2.5+2X1.5 GEN2 BK 1PCS	871951477244100
LL512T 4X2.5+8X1.5 GEN2 BK 1PCS	871951477245800
LL523T 4X2.5+2X1.5 GEN2 BK 1PCS	871951477246500
LL546T 4X2.5+2X1.5 GEN2 BK 1PCS	871951477247200
LL512T 4X2.5+4X1.5 GEN2 SI 1PCS	871951477252600
LL523T 4X2.5+4X1.5 GEN2 SI 1PCS	871951477253300
LL512T 4X2.5+4X1.5 GEN2 WH 1PCS	871951477254000
LL546T 4X2.5+4X1.5 GEN2 SI 1PCS	871951477255700
LL512T 4X2.5+4X1.5 GEN2 BK 1PCS	871951477256400
LL523T 4X2.5+4X1.5 GEN2 WH 1PCS	871951477259500
LL546T 4X2.5+4X1.5 GEN2 WH 1PCS	871951477260100

Trunk rail	
Trunkings IP20	EOC
LL523T 4X2.5+4X1.5 GEN2 BK 1PCS	871951477261800
LL546T 4X2.5+4X1.5 GEN2 BK 1PCS	871951477262500
LL523T 4X2.5+8X1.5 GEN2 WH 1PCS	871951477263200
LL523T 4X2.5+8X1.5 GEN2 BK 1PCS	871951477264900
LL546T 4X2.5+8X1.5 GEN2 WH 1PCS	871951477265600
LL546T 4X2.5+8X1.5 GEN2 BK 1PCS	871951477266300
Trunkings IP54	EOC
LL623T 4x2.5+2x1.5 Gen2 WH	872016942534799
LL623T 4x2.5+8x1.5 Gen2 WH	872016942535499
LL646T 4x2.5+2x1.5 Gen2 WH	872016942536199
LL646T 4x2.5+8x1.5 Gen2 WH	872016942537899
LL623T 4x2.5+4x1.5 Gen2 WH	872016942547799
LL646T 4x2.5+4x1.5 Gen2 WH	872016942548499
LL623T 4x2.5+2x1.5 Gen2 WH 1PCS	871951477248900
LL623T 4x2.5+8x1.5 Gen2 WH 1PCS	871951477249600
LL646T 4x2.5+8x1.5 Gen2 WH 1PCS	871951477250200
LL623T 4x2.5+4x1.5 Gen2 WH 1PCS	871951477257100
LL646T 4x2.5+4x1.5 Gen2 WH 1PCS	871951477258800
LL646T 4x2.5+2x1.5 Gen2 WH 1PCS	871951477267000



Below are standard codes, other options are configurable;  
 please contact your local Signify representative

Linear panels	
Linear panels IP20	EOC
LL523X LED123S/830 PSD WB 7 WH	871869933220400
LL523X LED100S/840 PSD DA35W 7 BK	871869934512900
LL523X LED62S/830 PSD MB 7 BK	871869934538900
LL512X LED31S/830 PSD MB 7 BK	871869934539600
LL512X LED50S/830 PSD DA25W 7 WH	871869941832800
LL512X LED31S/830 PSD DA25N 7 WH	871869941833500
LL523X LED62S/830 PSD DA25N 7 WH	871869941834200
LL523X LED62S/840 PSD WB 13 ELD3 WH	871869941835900
LL512X LED50S/830 PSD DA45W 7 VLC WH	871869941955400
LL512X LED50S/830 PSD WB 7 VLC WH	871869941956100
LL512X LED61S/830 PSD WB 7 VLC WH	871869941957800
LL523X LED100S/830 PSD DA45W 7 VLC WH	871869941958500
LL523X LED100S/830 PSD WB 7 VLC WH	871869941959200
LL523X LED123S/830 PSD WB 7 VLC WH	871869941961500
LL512X LED50S/840 PSD WB 7 VLC WH	871869698041500
LL523X LED100S/840 PSD WB 7 VLC WH	871869698042200
LL523X LED123S/840 PSD DA25W 7 VLC WH	871869698044600
LL523X LED123S/840 PSD WB 7 VLC WH	871869698045300
LL523X LED100S/840 PSD WB 7 VLC BK	871869698046000
LL523X LED123S/840 PSD WB 13 ELD3 VLC WH	871869698097200
LL523X LED62S/840 PSD WB 7 VLC WH	871869698098900
LL523X LED123S/840 PSD MB 7 VLC WH	871869698099600
LL512X LED61S/840 PSD WB 7 VLC WH	871869698100900
LL512X LED61S/840 PSD MB 7 VLC WH	871869698101600
LL523X LED100S/840 PSD DA35W 7 VLC BK	871869698127600
LL523X LED100S/840 PSD DA35W 7 VLC WH	871869698128300
LL523X LED123S/840 PSD DA35W 7 VLC WH	871869698129000
LL523X LED123S/840 PSD MB 7 CLO-VLC WH	871869698255600
LL512X LED61S/840 PSD MB 7 CLO-VLC WH	871869698256300
LL523X LED100S/840 PSD DA25W 7 VLC BK	871869698260000
LL523X LED123S/840 PSD WB 7 VLC BK	871869698261700
LL512X LED50S/840 PSD MB 7 SI	871869698287700
LL523X LED123S/830 PSED DA45W 13 WH	871869698288400
LL512X LED50S/840 PSD A20 7 BK	871869698318800
LL523X LED100S/840 PSD A20 7 BK	871869698319500
LL512X LED31S/840 PSED PCO 13 WH	871869698329400
LL512X LED31S/840 PSED WB 13 WH	871869698330000
LL512X LED61S/840 PSED WB 13 WH	871869698331700
LL523X LED100S/840 PSD DA25W 7 VLC WH	871869698377500
LL523X LED100S/830 PSD DA25W 7 VLC WH	871869698391100
LL523X LED62S/830 PSD WB 7 VLC WH	871869698392800
LL523X LED100S/830 PSD WB 7 WH	871869698394200
LL512X LED50S/830 PSD WB 7 WH	871869698395900
LL512X LED61S/840 PSED WB 13 VLC WH	871869698422200
LL523X LED62S/840 PSED WB 13 VLC WH	871869698423900
LL523X LED100S/840 PSED WB 13 VLC WH	871869698424600
LL523X LED123S/840 PSED WB 13 VLC WH	871869698425300
LL512X LED31S/840 PSD NB 7 VLC WH	871869698453600

Linear panels	
Linear panels IP20	EOC
LL523X LED123S/840 PSD PCO 7 VLC WH	871869698557100
LL523X LED123S/840 PSD PCO 7 VLC SI	871869698571700
LL523X LED123S/840 PSD PCO 7 VLC BK	871869698572400
LL512X LED61S/840 PSED DA25W 7 BK	871869698588500
LL523X LED123S/840 PSD DA25W 7 BK	871869698589200
LL512X LED31S/840 PSD WB 7 CLO-VLC WH	871869698619600
LL523X LED62S/840 PSD WB 7 CLO-VLC WH	871869698620200
LL512X LED50S/840 PSD WB 7 CLO-VLC WH	871869698621900
LL523X LED100S/840 PSD WB 7 CLO-VLC WH	871869698622600
LL512X LED61S/840 PSD DA25W 7 VLC WH	871869699306400
LL512X LED31S/840 PSD NB 7 VLC SI	871869699328600
LL523X LED100S/840 PSD DA25N 7 VLC SI	871869699329300
LL512X LED50S/840 PSD DA25N 7 VLC SI	871869699330900
LL523X LED100S/840 PSD DA45W 7 VLC SI	871869699331600
LL512X LED50S/840 PSD DA45W 7 VLC SI	871869699332300
LL512X LED31S/840 PSD WB 7 VLC SI	871869699333000
LL523X LED100S/840 PSD WB 7 VLC SI	871869699334700
LL523X LED62S/840 PSD WB 7 VLC SI	871869699335400
LL512X LED50S/840 PSD WB 7 VLC SI	871869699336100
LL512X LED31S/840 PSD WB 7 VLC SI	871869699337800
LL512X LED61S/840 PSD A20 7 BK	871869699436800
LL523X LED123S/840 PSD A20 7 BK	871869699437500
LL523X LED123S/840 PSD WB 7 CLO-VLC WH	871869699455900
LL512X LED61S/840 PSD WB 7 CLO-VLC WH	871869699456600
LL512X LED50S/835 PSD DA25W 7 VLC WH	871869942268400
LL523X LED100S/835 PSD DA25W 7 VLC WH	871869942269100
LL523X LED123S/840 PSED WB 13 WH	871869942302500
LL512X LED61S/840 PSED PCO 7 VLC WH	871869942318600
LL512X LED61S/840 PSED PCO 7 VLC SI	871869942319300
LL512X LED61S/840 PSED PCO 7 VLC BK	871869942320900
LL523X LED100S/830 PSD DA25W 7 VLC WH	871869942372800
LL523X LED100S/830 PSD DA25N 7 VLC WH	871869942374200
LL523X LED123S/830 PSD DA25W 7 VLC WH	871869942376600
LL523X LED62S/830 PSD WB 7 VLC WH	871869942377300
LL512X LED50S/830 PSD DA25W 7 VLC WH	871869942379700
LL523X LED100S/865 PSD PCO 7 VLC WH	871869942436700
LL523X LED123S/865 PSD PCO 7 VLC WH	871869942437400
LL512X LED50S/865 PSD PCO 7 VLC WH	871869942438100
LL512X LED61S/865 PSD PCO 7 VLC WH	871869942439800
LL512X LED50S/840 PSD DA45W 7 VLC BK	871869943141900
LL523X LED100S/840 PSD DA45W 7 VLC BK	871869943142600
LL512X LED50S/840 PSD WB 7 VLC BK	871869943143300
LL523X LED100S/835 PSD WB 7 BK	871869943236200
LL512X LED50S/835 PSD WB 7 BK	871869943237900
LL523X LED123S/865 PSD WB 7 WH	871869943417500
LL523X LED100S/840 PSD WB 7 VLC WH	871869943762600
LL523X LED100S/840 PSD NB 7 VLC WH	871869943763300
LL512X LED61S/840 PSD NB 7 VLC WH	871869943764000

# Ordering information and European ordering codes

Linear panels	
Linear panels IP20	EOC
LL512X LED50S/835 PSD DA35W 7 WH	871869943777000
LL512X LED31S/830 PSD WB 7 BK	871869943880700
LL512X LED50S/830 PSD WB 7 BK	871869943881400
LL523X LED100S/830 PSD WB 7 BK	871869943884500
LL512X LED61S/840 PSED WB 7 BK	871869943891300
LL512X LED31S/840 PSD PCO 7 VLC WH	871869944425900
LL523X LED123S/840 PSD NB 7 VLC WH	871869944555300
LL512X LED61S/835 PSD PCO 7 WH	871869944672700
LL512X LED31S/830 PSD WB 7 WH	871869980111300
LL512X LED31S/840 PSD DA45W 7 WH	871869980277600
LL523X LED62S/840 PSD DA45W 7 WH	871869980278300
LL523X LED123S/840 PSD DA45W 7 WH	871869980282000
LL523X LED100S/840 PSD WB 7 WH	871869980288200
LL512X LED31S/830 PSD PCO 7 WH	871869980344500
LL523X LED123S/830 PSD WB 7 VLC BK	871869980439800
LL512X LED61S/830 PSD WB 7 VLC BK	871869980441100
LL523X LED100S/840 PSD PCO 7 SI	871869981588200
LL512X LED50S/840 PSD PCO 7 SI	871869981589900
LL512X LED31S/840 PSD WB 7 VLC WH	871951405129400
LL523X LED123S/830 PSED DA45W 13 VLC WH	871951406072200
LL512X LED31S/840 PSD A20 7 BK	871951406106400
LL523X LED62S/840 PSD A20 7 BK	871951406108800
LL512X LED31S/830 PSD WB 7 VLC WH	871951406152100
LL523X LED62S/830 PSD WB 7 VLC WH	871951406153800
LL512X LED50S/830 PSED A20 13 WH	871951406163700
LL512X LED50S/830 PSD WB 7 VLC SI	871951406178100
LL512X LED31S/830 PSD WB 7 VLC SI	871951406179800
LL523X LED100S/830 PSD WB 7 VLC SI	871951406180400
LL523X LED62S/830 PSD WB 7 VLC SI	871951406181100
LL512X LED61S/830 PSD A20 7 SI	871951406243600
LL523X LED123S/830 PSD A20 7 SI	871951406246700
LL523X LED123S/840 PSD A20 7 SI	871951406247400
LL523X LED123S/840 PSD MB 7 SI	871951406248100
LL512X LED50S/840 PSED WB 13 VLC SI	871951406297900
LL523X LED100S/840 PSED WB 13 VLC SI	871951406298600
LL512X LED61S/940 PSD WB 7 VLC SI	871951406302000
LL523X LED123S/940 PSD WB 7 VLC SI	871951406303700
LL523X LED62S/940 PSD DA35W 7 VLC SI	871951406309900
LL512X LED31S/940 PSD WB-OC 7 VLC SI	871951406310500
LL523X LED62S/940 PSD WB-OC 7 VLC SI	871951406311200
LL512X LED50S/940 PSD WB 7 VLC SI	871951406314300
LL523X LED100S/940 PSD WB 7 VLC SI	871951406315000
LL512X LED31S/940 PSD WB 7 VLC SI	871951406316700
LL523X LED62S/940 PSD WB 7 VLC SI	871951406317400
LL512X LED50S/840 PSED A20 13 SI	871951406338900
LL512X LED61S/830 PSD DA45W 7 VLC BK	871951406454600
LL523X LED123S/830 PSD DA45W 7 VLC BK	871951406466900
LL512X LED61S/830 PSD WB 7 VLC SI	871951406468300

Linear panels	
Linear panels IP20	EOC
LL512X LED50S/830 PSD WB 7 VLC BK	871951406470600
LL523X LED100S/830 PSD WB 7 VLC BK	871951406478200
LL512X LED61S/830 PSD A20 7 BK	871951406486700
LL523X LED100S/830 PSD A20 7 WH	871951406492800
LL512X LED50S/840 PSD WB 7 VLC BK	871951406519200
LL512X LED61S/840 PSD WB 7 VLC BK	871951406520800
LL512X LED61S/840 PSD WB 7 VLC SI	871951406522200
LL523X LED100S/840 PSD WB 7 VLC SI	871951406523900
LL523X LED160S/840 PSD WB 7 WH	871951406533800
LL523X LED62S/840 PSD WB-OC 7 WH	871951406646500
LL512X LED31S/840 PSD WB-OC 7 WH	871951406647200
LL523X LED160S/840 PSD WB 7 WH XA	871951406704200
LL523X LED160S/840 PSD XNB 7 WH XA	871951406706600
LL523X LED123S/840 PSD NB 7 WH XA	871951406708000
LL523X LED123S/840 PSD MB 7 WH XA	871951406709700
LL512X LED80S/840 PSD WB 7 WH XA	871951406711000
LL512X LED80S/840 PSD NB 7 WH XA	871951406713400
LL512X LED61S/830 PSD DA25W 7 VLC BK	871951411343500
LL523X LED100S/840 PSD NB 7 VLC SI	871951411344200
LL512X LED80S/840 PSD MB 7 VLC WH XA	871951411852200
LL523X LED100S/840 PSD MB 7 WH XA	871951411872000
LL512X LED61S/840 PSD PCO 7 VLC WH XA	871951414229900
LL512X LED61S/840 PSD PCO 7 VLC WH	871951414316600
LL523X LED62S/840 PSD DA35W 7 VLC WH	871951414754600
LL512X LED31S/840 PSD DA35W 7 VLC WH	871951414755300
LL523X LED62S/840 PSD PCO 7 VLC WH	871951414756000
LL512X LED61S/840 PSD WB 7 WH XA	871951414913700
LL523X LED123S/840 PSD DA25N 7 BK	871951414941000
LL523X LED123S/940 PSD A20 7 WH	871951415876400
LL523X LED100S/830 PSED A20 13 WH	871951415909900
LL523X LED123S/840 PSD DA25N 7 VLC BK	871951416014900
LL523X LED160S/840 PSED WB 7 WH	871951416143600
LL523X LED123S/830 PSD DA45W 13 ELD3 VLC	871951416179500
LL523X LED123S/840 PSED WB 13 CLO WH XA	871951416242600
LL523X LED160S/840 PSD NB 13 ELP3 WH XA	871951416330000
LL523X LED123S/840 PSD WB 13 ELP3 WH XA	871951416332400
LL523X LED123S/840 PSD NB 13 ELP3 WH	871951416359100
LL523X LED160S/840 PSD WB 13 ELP3 WH	871951416360700
LL523X LED123S/840 PSD WB 13 ELP3 WH	871951416361400
LL523X LED100S/830 PSD A20 13 ELP3 WH	871951416460400
LL523X LED100S/830 PSD DA25W 13 ELP3 VLC	871951416461100
LL523X LED123S/830 PSD DA25W 13 ELP3 VLC	871951416463500
LL523X LED62S/830 PSD WB 13 ELP3 VLC WH	871951416464200
LL523X LED100S/840 PSD WB 7 VLC SI XA	871951416794000
LL512X LED50S/840 PSD WB 7 VLC SI XA	871951416795700
LL523X LED100S/840 PSD WB 13 ELD3 VLC SI	871951416796400
LL523X LED100S/840 PSD PCO 7 VLC SI XA	871951416797100
LL523X LED100S/840 PSD DA25W 7 BK	871951416801500

Below are standard codes, other options are configurable; please contact your local Signify representative

Linear panels	
Linear panels IP20	EOC
LL523X LED100S/840 PSD WB 13 ELP3 VLC WH	871951417308800
LL523X LED100S/830 PSD DA45W 13 ELP3 WH	871951417558700
LL523X LED62S/830 PSD A20 7 WH	871951417559400
LL512X LED61S/840 PSD NB 7 WH XA	871951417660700
LL512X LED31S/840 PSD XNB 7 WH XA	871951417661400
LL512X LED61S/840 PSD MB 7 WH XA	871951417662100
LL523X LED100S/840 PSD NB 7 WH XA	871951417663800
LL523X LED100S/840 PSD WB 7 WH XA	871951417664500
LL512X LED50S/840 PSD WB 7 SI XA	871951417687400
LL512X LED61S/840 PSD NB 7 SI XA	871951417688100
LL512X LED61S/840 PSD WB 7 SI XA	871951417689800
LL512X LED80S/840 PSD WB 7 SI XA	871951417690400
LL512X LED31S/840 PSD XNB 7 SI XA	871951417691100
LL512X LED61S/840 PSD MB 7 SI XA	871951417692800
LL523X LED100S/840 PSD NB 7 SI XA	871951417693500
LL523X LED100S/840 PSD MB 7 SI XA	871951417694200
LL523X LED100S/840 PSD WB 7 SI XA	871951417695900
LL523X LED123S/840 PSD MB 7 SI XA	871951417696600
LL523X LED160S/840 PSD NB 7 SI XA	871951417697300
LL523X LED160S/840 PSD MB 7 SI XA	871951417698000
LL523X LED160S/840 PSD WB 7 SI XA	871951417699700
LL523X LED62S/830 PSD A20 13 ELP3 WH	871951417812000
LL512X LED61S/830 PSED A20 7 WH	871951417814400
LL512X LED50S/830 PSD DA25W 7 VLC SI	871951417875500
LL512X LED50S/830 PSD DA25W 7 VLC WH	871951417876200
LL512X LED50S/840 PSD DA25W 7 VLC BK	871951417877900
LL512X LED50S/840 PSD DA25W 7 VLC SI	871951417878600
LL512X LED50S/840 PSD DA25W 7 VLC WH	871951417879300
LL512X LED50S/830 PSD WB 7 VLC BK	871951417880900
LL512X LED50S/830 PSD WB 7 VLC SI	871951417881600
LL512X LED31S/830 PSD DA25W 7 VLC BK	871951417886100
LL512X LED31S/830 PSD DA25W 7 VLC SI	871951417887800
LL512X LED31S/830 PSD DA25W 7 VLC WH	871951417888500
LL512X LED31S/840 PSD DA25W 7 VLC BK	871951417889200
LL512X LED31S/840 PSD DA25W 7 VLC SI	871951417890800
LL512X LED31S/840 PSD DA25W 7 VLC WH	871951417891500
LL512X LED31S/830 PSD WB 7 VLC BK	871951417892200
LL523X LED100S/830 PSD DA25W 7 VLC BK	871951417898400
LL523X LED100S/830 PSD DA25W 7 VLC SI	871951417899100
LL523X LED100S/840 PSD DA25W 7 VLC SI	871951417902800
LL523X LED62S/830 PSD DA25W 7 VLC BK	871951417907300
LL523X LED62S/830 PSD DA25W 7 VLC SI	871951417908000
LL523X LED62S/830 PSD DA25W 7 VLC WH	871951417909700
LL523X LED62S/840 PSD DA25W 7 VLC BK	871951417910300
LL523X LED62S/840 PSD DA25W 7 VLC SI	871951417911000
LL523X LED62S/840 PSD DA25W 7 VLC WH	871951417912700
LL523X LED62S/830 PSD WB 7 VLC BK	871951417913400
LL523X LED160S/840 PSED MB 13 WH	871951417958500

Linear panels	
Linear panels IP20	EOC
LL512X LED31S/840 PSD WB 7 SI XA	871951418956000
LL523X LED160S/840 PSD NB 13 ELP3 WH	871951419504200
LL523X LED160S/840 PSD XNB 13 ELP3 WH	871951419505900
LL523X LED160S/840 PSD WB 13 ELP3 WH XA	871951419718300
LL512X LED31S/840 PSD WB-OC 7 VLC WH	871951461579300
LL523X LED62S/840 PSD WB-OC 7 VLC WH	871951461580900
LL523X LED123S/840 PSD MB 13 ELP3 WH	871951461711700
LL523X LED123S/840 PSD DA25N 7 VLC WH	871951461754400
LL523X LED123S/840 PSD WB 13 ELD3 VLC WH	871951462143500
LL512X LED80S/840 PSD PCO 7 BK XA	871951462831100
LL523X LED123S/840 PSD PCO 7 BK XA	871951462832800
LL523X LED100S/840 PSD PCO 7 VLC WH	871951462880900
LL523X LED100S/840 PSD WB 13 ELD3 VLC WH	871951462915800
LL512X LED50S/840 PSED WB 13 VLC WH	871951462916500
LL523X LED100S/840 PSED DA25N 13 VLC WH	871951462917200
LL512X LED50S/840 PSED DA25N 13 VLC WH	871951462919600
LL523X LED100S/840 PSED MB 7 VLC SI	871951462938700
LL523X LED100S/840 PSD MB 13 ELD3 VLC SI	871951462939400
LL523X LED100S/840 PSD MB 13 ELP3 WH	871951462981300
LL523X LED100S/830 PSD DA45W 13 ELP3 VLC	871951463114400
LL523X LED123S/840 PSD NB 13 ELP3 VLC WH	871951463220200
LL523X LED160S/840 PSD MB 13 ELP3 WH	871951463358200
LL523X LED123S/830 PSD DA45W 13 ELD3 VLC	871951463601900
LL523X LED100S/840 PSED WB 13 CLO WH XA	871951463611800
LL512X LED50S/840 PSED WB 13 CLO WH XA	871951463612500
LL523X LED100S/840 PSD WB 13 ELP3 WH	871951463831000
LL523X LED62S/840 PSED WB 13 CLO-VLC BK	871951463835800
LL523X LED160S/840 PSD XNB 13 ELP3 WH XA	871951463862400
LL523X LED160S/840 PSD WB 7 SI	871951464386400
LL523X LED123S/865 PSD WB 7 VLC WH	871951464475500
LL523X LED62S/840 PSD WB-OC 13 ELP3 WH	871951464697100
LL523X LED160S/840 PSD MB 7 SI	871951464743500
LL523X LED123S/840 PSD PCO 13 ELP3 WH	871951465566900
LL523X LED123S/840 PSD DA35W 7 BK	871951465637600
LL523X LED100S/840 PSD DA45W 7 WH XA	871951465638300
LL523X LED62S/840 PSD PCO 7 VLC WH XA	871951465644400
LL523X LED62S/840 PSD PCO 13 ELP3 VLC WH	871951465645100
LL523X LED123S/840 PSED MB 13 WH	871951469923600
LL523X LED62S/840 PSD MB 7 BK	871951470097000
LL523X LED100S/840 PSD DA25N 7 BK XA	871951470315500
LL512X LED50S/840 PSD DA25N 7 BK XA	871951470316200
LL523X LED100S/840 PSD WB 7 BK XA	871951470317900
LL512X LED50S/840 PSD WB 7 BK XA	871951470318600
LL523X LED160S/840 PSD WB 7 CLO WH	871951470340700
LL523X LED160S/840 PSD NB 7 CLO WH	871951470341400
LL523X LED100S/830 PSD DA35W 7 VLC BK	871951470342100
LL512X LED50S/830 PSD DA35W 7 VLC BK	871951470343800
LL523X LED100S/830 PSD DA35W 7 VLC WH	871951470344500

# Ordering information and European ordering codes

Linear panels	
Linear panels IP20	EOC
LL512X LED50S/830 PSD DA35W 7 VLC WH	871951470345200
LL523X LED160S/840 PSD NB 7 SI	871951470759700
LL523X LED123S/940 PSD WB 7 BK	871951470919500
LL512X LED50S/830 PSD DA25W 7 SI	871951471082500
LL523X LED100S/830 PSD DA25W 7 SI	871951471083200
LL523X LED100S/830 PSD DA25W 7 WH	871951471084900
LL512X LED61S/840 PSED WB 13 SI	871951471087000
LL523X LED123S/840 PSED WB 13 SI	871951471088700
LL523X LED123S/830 PSD A20 13 ELD3 BK	871951471359800
LL523X LED123S/PW930 PSD DA35W 7 BK	871951471422900
LL512X LED61S/PW930 PSD DA35W 7 BK	871951471423600
LL523X LED123S/PW930 PSD WB 7 BK	871951471424300
LL512X LED61S/PW930 PSD WB 7 BK	871951471425000
LL523X LED123S/830 PSD DA35W 7 BK	871951471426700
LL512X LED61S/830 PSD DA35W 7 BK	871951471427400
LL523X LED123S/830 PSD WB 7 BK	871951471428100
LL512X LED61S/830 PSD WB 7 BK	871951471429800
LL523X LED160S/840 PSD MB 13 ELD3 WH HE	871951471439700
LL512X LED50S/840 PSD DA45W 7 BK	871951471766400
LL523X LED100S/840 PSD PCO 13 ELP3 WH	871951471888300
LL523X LED123S/840 PSD WB 7 BK XA	871951471918700
LL523X LED100S/840 PSD DA25N 7 BK	871951472125800
LL512X LED50S/840 PSD DA25N 7 BK	871951472126500
LL523X LED123S/940 PSD PCO 7 WH	871951472127200
LL512X LED61S/940 PSD PCO 7 WH	871951472128900
LL512X LED80S/840 WB 7 WH XA	871951472130200
LL523X LED160S/840 SIA MB 7 WH XA	871951472316000
LL523X LED160S/840 SIA WB 7 WH XA	871951472317700
LL523X LED62S/840 PSD DA45W 7 CLO WH XA	871951472386300
LL512X LED61S/840 PSD PCO 7 BK	871951472408200
LL512X LED80S/840 PSD PCO 7 BK	871951472409900
LL523X LED123S/840 PSD PCO 7 BK	871951472410500
LL523X LED123S/840 PSD PCO 7 BK	871951472411200
LL512X LED61S/940 PSD WB 7 CLO WH	871951472427300
LL523X LED123S/940 PSD WB 7 CLO WH	871951472428000
LL512X LED50S/865 PSD WB 7 WH	871951472443300
LL523X LED100S/865 PSD WB 7 WH	871951472444000
LL523X LED100S/865 PSD WB 13 ELD3 WH	871951472445700
LL523X LED62S/830 PSD PCO 7 WH	871951472514000
LL512X LED50S/840 PSD PCO 7 WH HE	871951472828800
LL523X LED123S/840 PSD WB 13 ELP3 WH HE	871951472832500
LL523X LED62S/840 PSD PCO 13 ELP3 WH HE	871951472833200
LL512X LED31S/840 PSD PCO 7 VLC WH XA	871951473112700
LL512X LED50S/840 PSD PCO 7 VLC WH XA	871951473113400
LL523X LED123S/840 PSD A20 7 WH XA	871951473327500
LL523X LED62S/840 PSD MB 7 WH XA	871951473328200
LL512X LED61S/840 PSD A20 7 WH XA	871951473330500
LL512X LED31S/840 PSD MB 7 WH XA	871951473331200

Linear panels	
Linear panels IP20	EOC
LL523X LED62S/830 PSD WB-OC 7 VLC BK	871951473429600
LL512X LED61S/840 PSD DA25N 7 SI HE	871951475902200
LL523X LED62S/840 PSD DA25N 7 SI HE	871951475903900
LL523X LED123S/840 PSD DA25N 7 SI HE	871951475904600
LL512X LED31S/830 PSD WB 7 VLC SI HE	871951476295400
LL512X LED61S/830 PSD WB 7 VLC SI HE	871951476296100
LL512X LED80S/830 PSD DA25N 7 VLC SI HE	871951476297800
LL523X LED100S/830 PSD WB 7 VLC SI HE	871951476298500
LL512X LED31S/830 PSD WB 7 SI HE	871951476299200
LL512X LED61S/830 PSD WB 7 SI HE	871951476300500
LL512X LED80S/830 PSD DA25N 7 SI HE	871951476301200
LL523X LED100S/830 PSD WB 7 SI HE	871951476302900
LL512X LED61S/PW930 PSD WB 7 VLC SI	871951476323400
LL523X LED123S/PW930 PSD WB 7 VLC SI	871951476324100
LL512X LED31S/830 PSD WB 7 VLC SI XA	871951476340100
LL512X LED61S/830 PSD WB 7 VLC SI XA	871951476341800
LL512X LED80S/830 PSD DA25N 7 VLC SI XA	871951476342500
LL523X LED100S/830 PSD WB 7 VLC SI XA	871951476343200
LL523X LED123S/940 PSD WB 7 SI	871951476516000
LL512X LED61S/940 PSD WB 7 SI	871951476517700
LL523X LED123S/PW930 PSD WB 7 SI	871951476518400
LL512X LED61S/PW930 PSD WB 7 SI	871951476519100
LL523X LED100S/940 PSD WB 7 SI	871951476520700
LL512X LED50S/940 PSD WB 7 SI	871951476521400
LL523X LED62S/940 PSD WB 7 SI	871951476522100
LL512X LED31S/940 PSD WB 7 SI	871951476523800
LL523X LED62S/940 PSD WB-OC 7 SI	871951476524500
LL512X LED31S/940 PSD WB-OC 7 SI	871951476525200
LL523X LED62S/940 PSD DA35W 7 SI	871951476526900
LL512X LED31S/940 PSD DA35W 7 SI	871951476527600
LL523X LED100S/840 SIA WB 7 WH XA	871951476689100
LL512X LED50S/840 SIA WB 7 WH XA	871951476690700
LL523X LED62S/840 SIA WB-OC 7 WH	871951476691400
LL512X LED31S/840 SIA WB-OC 7 WH	871951476692100
LL512X LED50S/830 PSD WB 7 BK HE	871951477958700
LL512X LED61S/830 PSD DA25W 7 BK HE	871951477959400
LL512X LED80S/830 PSD DA25W 7 BK HE	871951477960000
LL523X LED62S/830 PSD MB 7 BK HE	871951477961700
LL523X LED123S/830 PSD DA25W 7 BK HE	871951477962400
LL523X LED123S/830 PSD DA35W 7 BK HE	871951477963100
LL523X LED62S/840 PSD PCO 13 ELP3 VLC WH	871951478199300
LL512X LED31S/840 SIA PCO 7 WH	871951478205100
LL523X LED160S/840 PSD WB 7 WH HE	871951478209900
LL512X LED80S/840 PSD WB 7 WH HE	871951478210500
LL512X LED80S/830 PSD DA25W 7 VLC BK XA	871951478778000
LL523X LED62S/830 PSD MB 7 VLC BK	871951478779700
LL512X LED61S/830 PSD DA35W 7 VLC BK	871951478780300
LL512X LED31S/840 PSED WB 13 VLC WH	871951478797100

Below are standard codes, other options are configurable;  
 please contact your local Signify representative

Linear panels	
Linear panels IP20	EOC
LL523X LED100S/840 PSD DA25N 13 ELP3 VLC	871951478798800
LL523X LED62S/840 PSD WB 13 ELP3 VLC WH	871951478799500
LL523X LED123S/940 SIA WB 7 WH	871951478802200
LL523X LED100S/840 SIA WB 7 CLO WH	871951478831200
LL523X LED123S/940 PSD A20 13 ELP3 WH	872016941415000
LL523X LED100S/940 PSD NB 7 WH	872016941416700
LL523X LED160S/840 PSD WB 7 BK HE	872016941419800
LL512X LED80S/840 PSD WB 7 BK HE	872016941420400
LL523X LED123S/840 PSD DA25N 7 WH HE	872016941422800
LL512X LED61S/840 PSD DA25N 7 WH HE	872016941424200
LL523X LED100S/840 PSD PCO 7 VLC WH XA	872016941544700
LL523X LED123S/830 PSD WB 7 SI HE	872016941546100
LL523X LED123S/830 PSD WB 7 VLC SI XA	872016941547800
LL523X LED62S/830 PSD WB-OC 7 SI HE	872016941548500
LL523X LED100S/840 PSD PCO 13 ELD3 VLC W	872016941640600
LL523X LED62S/840 PSD WB-OC 13 ELD3 WH	872016941728100
LL512X LED50S/940 PSD DA25W 7 WH	872016941734200
LL523X LED100S/940 PSD DA25W 7 WH	872016941735900
LL512X LED50S/940 PSD A20 7 WH	872016941736600
LL523X LED100S/940 PSD A20 7 WH	872016941737300
LL523X LED62S/940 PSD WB 7 BK	872016941810300
LL512X LED50S/835 PSD A20 7 BK	872016941868400
LL523X LED100S/835 PSD A20 7 BK	872016941870700
LL523X LED123S/840 SIA WB 7 WH	872016941922300
LL523X LED123S/840 PSD PCO 13 ELP3 VLC W	872016942007600
LL523X LED62S/840 PSD WB-OC 7 VLC WH	872016942008300
LL523X LED100S/840 PSD DA45W 7 WH HE	872016942022900
LL523X LED123S/840 PSD PCO 13 ELD3 VLC W	872016942030400
LL512X LED61S/840 PSD DA45W 7 WH	872016942210000
LL523X LED123S/830 PSD WB 13 ELP3 BK	872016942279700
LL523X LED62S/840 PSD DA25N 13 ELP3 WH H	872016942472200
LL512X LED31S/840 PSD DA25N 7 WH HE	872016942473900
LL523X LED62S/840 PSD DA25N 7 WH HE	872016942474600
LL512X LED31S/830 SIA WB-OC 7 WH	872016942563700
LL523X LED123S/840 PSD WB 7 VLC WH XA	872016942710500
LL523X LED123S/840 PSED WB 7 VLC WH XA	872016942711200
LL523X LED123S/PW930 PSED WB 7 WH	872016942715000
LL523X LED62S/PW930 PSED WB-OC 7 WH	872016942716700
LL512X LED61S/PW930 PSED WB 7 WH	872016942717400
LL523X LED62S/840 PSD WB-OC 7 BK HE	872016942828700
LL512X LED31S/840 PSD WB-OC 7 BK HE	872016942829400
LL523X LED100S/840 PSD WB 7 BK HE	872016942830000
LL512X LED50S/840 PSD WB 7 BK HE	872016942831700
LL523X LED123S/840 PSD PCO 13 ELP3 BK	872016943013600
LL523X LED100S/840 PSD DA25W 13 ELP3 BK	872016943038900
LL523X LED100S/840 PSD WB 13 ELP3 BK	872016943039600
LL512X LED80S/840 PSD PCO 7 VLC BK HE	872016943044000
LL523X LED123S/840 PSD PCO 7 VLC BK HE	872016943045700

Linear panels	
Linear panels IP20	EOC
LL523X LED62S/840 PSD WB-OC 7 VLC BK	872016943046400
LL512X LED31S/840 PSD WB-OC 7 VLC BK	872016943047100
LL512X LED31S/840 PSD PCO 7 WH	871869638411400
LL512X LED50S/840 PSD PCO 7 WH	871869638412100
LL512X LED61S/840 PSD PCO 7 WH	871869638413800
LL523X LED62S/840 PSD PCO 7 WH	871869638414500
LL523X LED100S/840 PSD PCO 7 WH	871869638415200
LL523X LED123S/840 PSD PCO 7 WH	871869638416900
LL512X LED31S/840 PSED PCO 7 WH	871869638417600
LL512X LED50S/840 PSED PCO 7 WH	871869638418300
LL512X LED61S/840 PSED PCO 7 WH	871869638419000
LL512X LED31S/840 PSD WB 7 WH	871869638420600
LL512X LED50S/840 PSD WB 7 WH	871869638421300
LL512X LED61S/840 PSD WB 7 WH	871869638422000
LL523X LED62S/840 PSD WB 7 WH	871869638423700
LL523X LED100S/840 PSD WB 7 WH	871869638424400
LL523X LED123S/840 PSD WB 7 WH	871869638425100
LL512X LED31S/840 PSED WB 7 WH	871869638426800
LL512X LED50S/840 PSED WB 7 WH	871869638427500
LL512X LED61S/840 PSED WB 7 WH	871869638428200
LL512X LED31S/840 PSD MB 7 WH	871869638429900
LL512X LED50S/840 PSD MB 7 WH	871869638430500
LL512X LED61S/840 PSD MB 7 WH	871869638431200
LL523X LED62S/840 PSD MB 7 WH	871869638432900
LL523X LED100S/840 PSD MB 7 WH	871869638433600
LL523X LED123S/840 PSD MB 7 WH	871869638434300
LL512X LED61S/840 PSD NB 7 WH	871869638437400
LL523X LED62S/840 PSD NB 7 WH	871869638438100
LL523X LED100S/840 PSD NB 7 WH	871869638439800
LL523X LED123S/840 PSD NB 7 WH	871869638440400
LL512X LED31S/840 PSD DA35W 7 WH	871869638441100
LL512X LED50S/840 PSD DA35W 7 WH	871869638442800
LL512X LED61S/840 PSD DA35W 7 WH	871869638443500
LL523X LED62S/840 PSD DA35W 7 WH	871869638444200
LL523X LED100S/840 PSD DA35W 7 WH	871869638445900
LL523X LED123S/840 PSD DA35W 7 WH	871869638446600
LL512X LED31S/840 PSD DA25W 7 WH	871869638447300
LL512X LED50S/840 PSD DA25W 7 WH	871869638448000
LL512X LED61S/840 PSD DA25W 7 WH	871869638449700
LL523X LED62S/840 PSD DA25W 7 WH	871869638450300
LL523X LED100S/840 PSD DA25W 7 WH	871869638451000
LL523X LED123S/840 PSD DA25W 7 WH	871869638452700
LL512X LED31S/840 PSD DA25N 7 WH	871869638453400
LL512X LED50S/840 PSD DA25N 7 WH	871869638454100
LL512X LED61S/840 PSD DA25N 7 WH	871869638455800
LL523X LED62S/840 PSD DA25N 7 WH	871869638456500
LL523X LED100S/840 PSD DA25N 7 WH	871869638457200
LL523X LED123S/840 PSD DA25N 7 WH	871869638458900

# Ordering information and European ordering codes

Linear panels	
Linear panels IP20	EOC
LL512X LED31S/840 PSD A20 7 WH	871869638459600
LL512X LED61S/840 PSD A20 7 WH	871869638461900
LL523X LED62S/840 PSD A20 7 WH	871869638462600
LL523X LED100S/840 PSD A20 7 WH	871869638463300
LL523X LED123S/840 PSD A20 7 WH	871869638464000
LL512X LED31S/840 PSD WB 7 SI	871869638465700
LL512X LED50S/840 PSD WB 7 SI	871869638466400
LL512X LED61S/840 PSD WB 7 SI	871869638467100
LL523X LED62S/840 PSD WB 7 SI	871869638468800
LL523X LED100S/840 PSD WB 7 SI	871869638469500
LL523X LED123S/840 PSD WB 7 SI	871869638470100
LL512X LED31S/840 PSD WB 7 BK	871869638471800
LL512X LED50S/840 PSD WB 7 BK	871869638472500
LL512X LED61S/840 PSD WB 7 BK	871869638473200
LL523X LED62S/840 PSD WB 7 BK	871869638474900
LL523X LED100S/840 PSD WB 7 BK	871869638475600
LL523X LED123S/840 PSD WB 7 BK	871869638476300
LL512X LED50S/835 PSD WB 7 WH	871869698725400
LL523X LED100S/835 PSD WB 7 WH	871869698726100
LL512X LED42S/840 PSU WB 7 WH	871869698666000
LL523X LED84S/840 PSU WB 7 WH	871869698667700
LL512X LED42S/840 PSU PCO 7 WH	871869699562400
LL523X LED84S/840 PSU PCO 7 WH	871869699563100
LL523X LED63S/840 PSU WB 7 WH 6FT	871869942486200
LL523X LED63S/840 PSU PCO 7 WH 6FT	871869942487900
LL523X LED63S/840 PSU WB 7 ELB3 WH 6FT	871869943108200
LL523X LED84S/840 PSU WB 7 ELB3 WH	871869943799200
LL512X LED31S/840 PSU WB 7 WH	871869943901900
LL512X LED31S/840 PSU PCO 7 WH	871869943902600
LL523X LED160S/840 PSD MB 7 WH	871869944804200
LL523X LED160S/840 PSD NB 7 WH	871869944805900
LL523X LED160S/840 PSD XNB 7 WH	871869944806600
LL523X LED160S/830 PSD MB 7 WH	871869944807300
LL523X LED160S/830 PSD NB 7 WH	871869944808000
LL523X LED160S/830 PSD XNB 7 WH	871869944809700
LL523X LED123S/830 PSD WB 7 WH XA	871951414499600
LL523X LED160S/830 PSD MB 7 WH XA	871951414500900
LL523X LED123S/830 PSD DA45W 7 WH XA	871951414501600
LL523X LED123S/840 PSD DA45W 7 WH XA	871951414502300
LL523X LED160S/830 PSD WB 7 WH XA	871951414503000
LL523X LED160S/830 PSD NB 7 WH XA	871951414504700
LL523X LED123S/840 PSD WB 7 WH XA	871951414505400
LL523X LED100S/840 PSD MB 7 VLC WH XA	871951414506100
LL523X LED123S/840 PSD MB 7 VLC WH XA	871951414507800
LL523X LED123S/840 PSD WB 7 VLC WH XA	871951414508500
LL523X LED160S/840 PSD MB 7 WH XA	871951414509200

Linear panels	
Linear panels IP20	EOC
LL512X LED61S/840 PSD PCO 7 VLC WH XA	871951414510800
LL523X LED123S/840 PSD PCO 7 VLC WH XA	871951414511500
LL523X LED100S/840 PSED MB 13 VLC WH XA	871951414512200
LL523X LED100S/840 PSED WB 13 VLC WH XA	871951414513900
LL523X LED123S/840 PSED NB 13 VLC WH XA	871951414514600
LL523X LED123S/840 PSED MB 13 VLC WH XA	871951414515300
LL523X LED123S/840 PSED WB 13 VLC WH XA	871951414516000
LL523X LED160S/840 PSED NB 13 WH XA	871951414517700
LL523X LED100S/840 PSD MB 7 VLC WH XA	871951414644000
LL523X LED123S/840 PSD MB 7 VLC WH XA	871951414645700
LL523X LED123S/840 PSD WB 7 VLC WH XA	871951414646400
LL523X LED160S/840 PSD MB 7 WH XA	871951414647100
LL512X LED61S/840 PSD PCO 7 VLC WH XA	871951414648800
LL523X LED123S/840 PSD PCO 7 VLC WH XA	871951414649500
LL523X LED100S/840 PSED MB 13 VLC WH XA	871951414650100
LL523X LED100S/840 PSED WB 13 VLC WH XA	871951414651800
LL523X LED123S/840 PSED NB 13 VLC WH XA	871951414652500
LL523X LED123S/840 PSED MB 13 VLC WH XA	871951414653200
LL523X LED123S/840 PSED WB 13 VLC WH XA	871951414654900
LL523X LED160S/840 PSED NB 13 WH XA	871951414655600
LL523X LED160S/840 PSED MB 13 WH XA	871951414656300
LL512X LED61S/840 PSED PCO 13 VLC WH XA	871951414657000
LL523X LED123S/840 PSED PCO 13 VLC WH XA	871951414658700
LL523X LED100S/840 PSD WB 7 VLC WH XA	871951415036200
LL523X LED123S/840 PSD NB 7 VLC WH XA	871951415037900
LL523X LED160S/840 PSD NB 7 WH XA	871951415038600
LL523X LED123S/840 PSED PCO 13 WH	871951418119900
LL523X LED62S/840 PSED WB 13 WH	871951418120500
LL523X LED62S/840 PSED PCO 13 WH	871951418121200
LL512X LED61S/840 PSED PCO 13 WH	871951418122900
LL523X LED123S/840 PSD PCO 13 ELP3 WH	871951418127400
LL523X LED62S/840 PSD WB 13 ELP3 WH	871951418128100
LL523X LED62S/840 PSD PCO 13 ELP3 WH	871951418129800
LL512X LED31S/940 PSED WB-OC 13 WH	871951418130400
LL512X LED31S/940 PSED WB-OC 13 BK	871951418131100
LL512X LED31S/840 PSED WB-OC 13 WH XA	871951418132800
LL512X LED31S/840 PSED WB-OC 13 BK XA	871951418133500
LL523X LED62S/940 PSED WB-OC 13 WH	871951418134200
LL523X LED62S/940 PSED WB-OC 13 BK	871951418135900
LL523X LED62S/840 PSED WB-OC 13 WH XA	871951418136600
LL523X LED62S/840 PSED WB-OC 13 BK XA	871951418137300
LL523X LED62S/940 PSD WB-OC 13 ELP3 WH	871951418138000
LL523X LED62S/840 PSD WB-OC 13 ELP3 WH X	871951418139700
LL523X LED62S/840 PSD WB-OC 7 WH XA	871951418109000
LL512X LED31S/840 PSD WB-OC 7 WH XA	871951418110600
LL523X LED123S/840 SIA WB 7 WH XA	871951473845499

Below are standard codes, other options are configurable;  
 please contact your local Signify representative

Linear panels	
Linear panels IP20	EOC
LL523X LED123S/840 SIA WB 13 ELP3 WH XA	871951473846199
LL523X LED160S/840 SIA NB 7 WH XA	871951473847899
LL523X LED160S/840 SIA NB 13 ELP3 WH XA	871951473848599
LL515X 61S/840 PSD WB 7 HE WH	871951474857699
LL515X 80S/840 PSD WB 7 HE WH	871951474858399
LL515X 61S/840 PSD MB 7 HE WH	871951474859099
LL515X 80S/840 PSD MB 7 HE WH	871951474860699
LL515X 61S/840 PSD NB 7 HE WH	871951474861399
LL515X 80S/840 PSD NB 7 HE WH	871951474862099
LL523X LED62S/840 PSD MB 7 WH HE	871951473755600
LL523X LED62S/840 PSD WB 7 WH HE	871951473756300
LL523X LED100S/840 PSD MB 7 WH HE	871951473757000
LL523X LED100S/840 PSD WB 7 WH HE	871951473758700
LL523X LED123S/840 PSD NB 7 WH HE	871951473759400
LL523X LED123S/840 PSD MB 7 WH HE	871951473760000
LL523X LED123S/840 PSD WB 7 WH HE	871951473761700
LL523X LED160S/840 PSD NB 7 WH HE	871951473762400
LL523X LED160S/840 PSD MB 7 WH HE	871951473763100
LL512X LED31S/840 PSD MB 7 WH HE	871951473764800
LL512X LED31S/840 PSD WB 7 WH HE	871951473765500
LL512X LED50S/840 PSD MB 7 WH HE	871951473766200
LL512X LED50S/840 PSD WB 7 WH HE	871951473767900
LL512X LED61S/840 PSD NB 7 WH HE	871951473768600
LL512X LED61S/840 PSD MB 7 WH HE	871951473769300
LL512X LED61S/840 PSD WB 7 WH HE	871951473770900
LL512X LED80S/840 PSD NB 7 WH HE	871951473771600
LL512X LED80S/840 PSD MB 7 WH HE	871951473772300
LL523X LED100S/840 SIA MB 7 WH HE	871951473773000
LL523X LED100S/840 SIA WB 7 WH HE	871951473774700
LL523X LED123S/840 SIA NB 7 WH HE	871951473775400
LL523X LED123S/840 SIA MB 7 WH HE	871951473776100
LL523X LED123S/840 SIA WB 7 WH HE	871951473777800
LL523X LED160S/840 SIA NB 7 WH HE	871951473778500
LL523X LED160S/840 SIA MB 7 WH HE	871951473779200
LL523X LED62S/840 SIA WB 7 WH HE	871951473780800
LL523X LED123S/840 SIA PCO 7 WH HE	871951473781500
LL523X LED100S/840 SIA PCO 7 WH HE	871951473782200
LL523X LED62S/840 SIA PCO 7 WH HE	871951473783900
LL512X LED50S/840 SIA MB 7 WH HE	871951473784600
LL512X LED50S/840 SIA WB 7 WH HE	871951473785300
LL512X LED61S/840 SIA NB 7 WH HE	871951473786000
LL512X LED61S/840 SIA MB 7 WH HE	871951473787700
LL512X LED61S/840 SIA WB 7 WH HE	871951473788400
LL512X LED80S/840 SIA NB 7 WH HE	871951473789100
LL512X LED80S/840 SIA MB 7 WH HE	871951473790700
LL512X LED31S/840 SIA WB 7 WH HE	871951473792100

Linear panels	
Linear panels IP20	EOC
LL512X LED61S/840 SIA PCO 7 WH HE	871951473793800
LL512X LED31S/840 SIA PCO 7 WH HE	871951473794500
LL512X LED50S/840 PSD PCO 7 WH HE	871951473749500
LL523X LED123S/840 PSD WB 13 ELP3 WH HE	871951473753200
LL523X LED62S/840 PSD PCO 13 ELP3 WH HE	871951473754900
LL512X LED31S/840 PSED WB-OC 13 WH HE	871951473747100
LL523X LED62S/840 PSED WB-OC 13 WH HE	871951473748800
LL523X LED123S/840 PSD WB 7 WH	872016944088399
LL523X LED100S/840 PSD WB 13 ELP3 WH	872016944089099
LL523X LED160S/840 PSD WB 7 WH	872016944090699
LL523X LED160S/840 PSD WB 7 WH XA	872016944091399
LL523X LED160S/840 PSD WB 7 WH HE	872016944092099
LL523X LED160S/840 PSD WB 13 ELD3 WH	872016944093799
LL512X LED80S/840 SIA MB 7 WH HE	872016944094499
LL523X LED160S/840 PSD WB 7 WH HE	871951478918000
LL512X LED80S/840 PSD WB 7 WH HE	871951478919700

# Ordering information and European ordering codes

Accessories	
Mechanical accessories	EOC
LL500Z SMB WH	871869637448199
LL500Z SMB SI	871869637449899
LL500Z SMB BK	871869637450499
LL500Z MB-SW WH	871869637451199
LL500Z MB-SW SI	871869637452899
LL500Z MB-SW BK	871869637453599
LL500Z PB WH	871869637454299
LL500Z PB SI	871869637455999
LL500Z PB BK	871869637456699
LL500Z MB-SW2 L5000 WH	871869637457399
LL500Z MB-SW2 L5000 SI	871869637458099
LL500Z MB-SW2 L5000 BK	871869637459799
LL500Z CB-CH WH	871869637460399
LL500Z CB-CH SI	871869637461099
LL500Z CB-CH BK	871869637462799
LL500Z SW2 L1250	871869637476499
LL500Z SW2 L3000	871869637477199
LL500Z SW2 L5000	871869637478899
LL500Z MB-SW2 L3000 WH	872016942501999
LL500Z MB-SW2 L3000 SI	872016942502699
LL500Z MB-SW2 L3000 BK	872016942503399
LL500Z CPX Gen2 WH	871951477280900
LL500Z CPX Gen2 SI	871951477281600
LL500Z CPX Gen2 BK	871951477282300
LL500Z CPL Gen2 WH	871951477283000
LL500Z CPL Gen2 SI	871951477284700
LL500Z CPL Gen2 BK	871951477285400
LL500Z CPT Gen2 WH	871951477286100
LL500Z CPT Gen2 SI	871951477287800
LL500Z CPT Gen2 BK	871951477288500
Cable duct accessories	EOC
LL500Z SPA-CD	871869637463499
LL512Z CD WH	871869637464199
LL512Z CD SI	871869637465899
LL512Z CD BK	871869637466599
LL523Z CD WH	871869637467299
LL523Z CD SI	871869637468999
LL523Z CD BK	871869637469699
LL546Z CD WH	871869637470299
LL546Z CD SI	871869637471999
LL546Z CD BK	871869637472699
LL500Z CDS WH	871869637473399
LL500Z CDS SI	871869637474099
LL500Z CDS BK	871869637475799
LL500Z CB-CH SI	871869637461099
LL500Z CB-CH BK	871869637462799

Accessories	
Blind covers IP20	EOC
LL500Z BC L2300 WH	871869638354400
LL500Z BC L2300 SI	871869638355100
LL500Z BC L2300 BK	871869638356800
LL500Z BC L570 SI	871869698955599
LL500Z BC L570 BK	871869698956299
LL500Z BC L285 WH	871869698957999
LL500Z BC L285 SI	871869698958699
LL500Z BC L285 BK	871869698959399
LL500Z BC L1150 WH	871869698951799
LL500Z BC L1150 SI	871869698952499
LL500Z BC L1150 BK	871869698953199
LL500Z BC L570 WH	871869698954899
Blind covers IP54	EOC
LL600Z BC L2180 WH	871869698950099
LL600Z BC L520 WH	871869698947099
LL600Z BC L1040 WH	871869698948799
LL600Z BC L1090 WH	871869698949499
Electrical accessories	EOC
LL500Z 2xEP CU Gen2 WH	872016942549199
LL500Z 2xEP CU Gen2 SI	872016942550799
LL500Z 2xEP CU Gen2 BK	872016942551499
LL500Z CM L400 Gen2 WH	871951477273100
LL500Z CM L400 Gen2 SI	871951477274800
LL500Z CM L400 Gen2 BK	871951477275500
LL500Z CM L550 Gen2 WH	871951477276200
LL500Z CM L550 Gen2 SI	871951477277900
LL500Z CM L550 Gen2 BK	871951477278600
LL500E IA4 Gen2 WH	871951477149900
LL500E H4 Gen2 WH	871951477279300
LL500E BLE WH	871869944811000
LL500E BLE BK	871869944813400
LL500E BLE SI	871869944815800
LL500E IA4 SR2DALI Gen2 WH	872016947111500
LL500E H4 SR2DALI Gen2 WH	872016947110800



Maxos fusion  
.....  
Industry and  
retail lighting  
.....  
**Ordering  
information**  
.....



© 2023 Signify Holding. All rights reserved. The information provided herein is subject to change, without notice. Signify does not give any representation or warranty as to the accuracy or completeness of the information included herein and shall not be liable for any action in reliance thereon. The information presented in this document is not intended as any commercial offer and does not form part of any quotation or contract, unless otherwise agreed by Signify. Philips and the Philips Shield Emblem are registered trademarks of Koninklijke Philips N.V. All other trademarks are owned by Signify Holding or their respective owners.

[www.philips.com/maxosfusion](http://www.philips.com/maxosfusion)