

## Angle valve - Platinum

SERIES SPECIFIC

22 901 782 Product version from 3/10/2014 to 5/27/2021

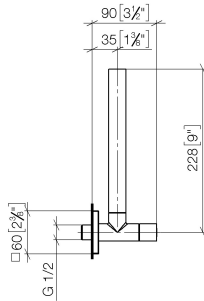


- rosette 60 x 60 mm
- hose covering 200mm, for shortening
- 1/2" connection
- WRAS

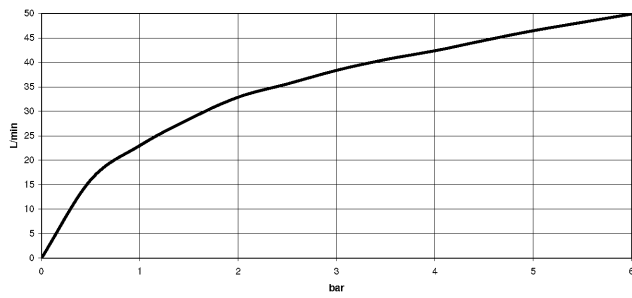
	Platinum	22 901 782-08
	Chrome	22 901 782-00
	Brushed Platinum	22 901 782-06
	Dark Chrome	22 901 782-19
	Brushed Durabronze (23kt Gold)	22 901 782-28
	Matte Black	22 901 782-33
	Brushed Gold (PVD)	22 901 782-37
	Brushed Dark Brass (PVD)	22 901 782-39
	Brushed Bronze (PVD)	22 901 782-42
	Brushed Dark Bronze (PVD)	22 901 782-43
	Brushed Champagne (22kt Gold)	22 901 782-46
	Champagne (22kt Gold)	22 901 782-47
	Brushed Chrome	22 901 782-93
	Brushed Dark Platinum	22 901 782-99

22 901 782 Product version from 3/10/2014 to 5/27/2021

mm [inches]



Flow rate chart



Codes & Standards

Scottish Water  
Byelaws

UK Water Supply  
Regulations



## Angle valve - Platinum

SERIES SPECIFIC

---

22 901 782 Product version from 3/10/2014 to 5/27/2021

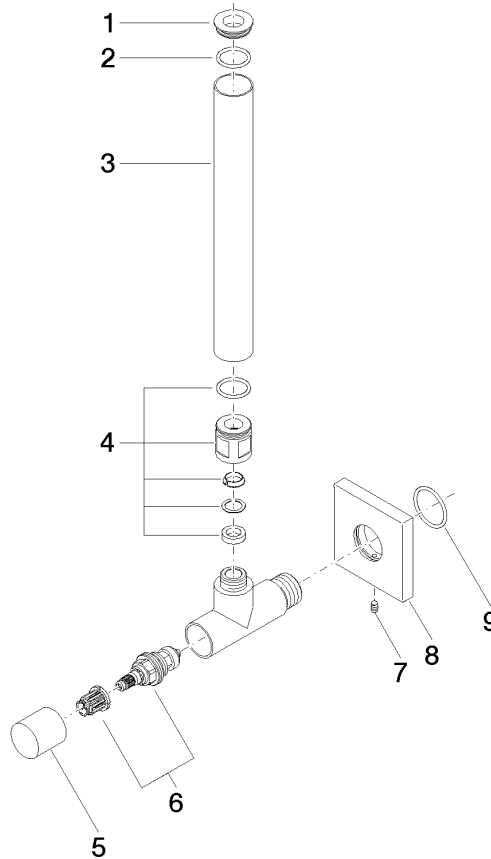
### Certificates and sustainability

---

WRAS\_2205

22 901 782 Product version from 3/10/2014 to 5/27/2021

Parts for other finishes can be found here: Chrome



Spare parts list

No.	Item Number	Name	Quantity used	Delivery time
	2 90 14 10 010 00 90	O-Ring EPDM 70 17,0 x 2,0 mm -	1.00	14
	4 04 24 04 220 01-08	Compression fitting Ø 22 x 22 mm - Platinum	1.00	-
Spare part can no longer be ordered, please order the replacement item				
	6 90 90 03 006 00 90	Head part Grease chamber 3/8" -	1.00	14
	3 09 28 22 020-08	Pipe Ø 24 x 200 mm - Platinum	1.00	-
Spare part can no longer be ordered, please order the replacement item				
	9 09 14 10 112 90	O-Ring 24,0 x 2,0 mm -	1.00	14
	5 09 20 22 001-08	Handle Ø 24 x 25,5 mm - Platinum	1.00	-
Spare part can no longer be ordered, please order the replacement item				
	8 09 27 78 042-08	Rosette for angle valve 60 x 60 x 9 mm - Platinum	1.00	54
	1 09 21 22 000-08	Cover Ø 24 x 6 mm - Platinum	1.00	-
Spare part can no longer be ordered, please order the replacement item				
	7 09 31 11 048 90	Mounting Threaded pin with hexagon socket with point M4 x 8 mm -	1.00	14