

# Finishing set for two-circuit switch, two-way switch + N.O. push button, double two-way switch or double N.O. or N.C. push button, bronze coated

**123-61505**

CE

4 year warranty

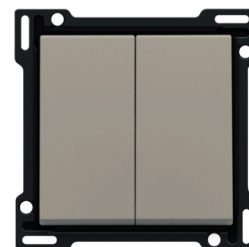
Finishing set with two keys. It is suitable for a switch or push button used to control various lighting points in one or more rooms. Colour: bronze coated

## Technical data

Finishing set for two-circuit switch, two-way switch + N.O. push button, double two-way switch or double N.O. or N.C. push button, bronze coated.

This central plate is surrounded with a flat edge that is equipped at all 4 corners with a rectangular opening, each containing a multi-positional snap hook. The construction of the central plate ensures that the faceplate can always be attached flat to the wall, even in cases of untidy plasterwork. This works in two directions: If the flush-mounting box sticks out of the plasterwork, the multi-positional snap hooks can compensate for a 1 to 1.2 mm margin; if the flush-mounting box is sunk too deeply in the plasterwork, the snap hooks can compensate for up to a 1.8 mm margin. The flat edge around the central plate also has 4 round openings that ensure the correct positioning of the faceplate in relation to the central plate. After mounting all components (faceplate, finishing set and switch), no metal parts are visible thanks to the flat edge of the central plate.

- Function: the two keys and the intermediate plate (board) form one unit
- Number of buttons: 2
- Material finishing: polycarbonate (PC) + acrylic-styrene-acrylate (ASA)
- Type of control: switch or push button
- Colour: bronze coated
- Colour RAL (approximately): 080 50 05
- Colour NCS (approximately): NCS S 5005-Y20R
- Surface treatment: coated
- Number of lenses: 0
- Type of fastening: click on
- Dismantling method: insert a slotted screwdriver in one of the two notches in the flat edge of the central plate (marked with a screwdriver symbol) to lift the central plate up
- Minimum ambient temperature: 5 °C
- Maximum ambient temperature: 40 °C



- Protection degree: IP41 for the combination of a mechanism, central plate and faceplate
- Impact resistance: the combination of a mechanism, a central plate and a faceplate has an impact-resistance of IK06
- Fire safety:
  - all plastic components are self-extinguishing (comply with a filament test of 650°C)
  - all plastic components are halogen-free
- Dimensions of finishing with flat edge: 56 x 56 mm (HxW), dimensions of visible area of finishing: 45 x 45 mm (HxW)
- Dimensions (HxWxD): 55.8 mm x 55.8 mm x 10.5 mm
- Certification marks: CE, DEMKO, NF, KEMA, ÖVE, SEMKO, VDE
- Marking: CE