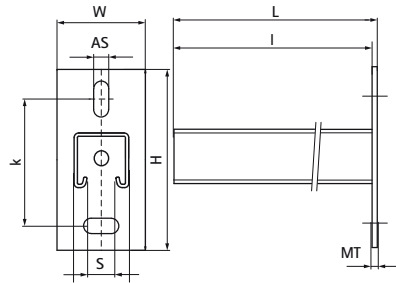
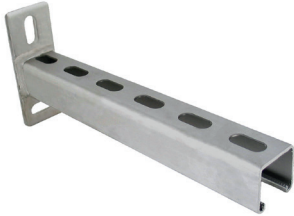


Walraven RapidStrut® Stainless Steel Cantilever Arm

(M5005)

fixing to wall



Features & benefits

- wall plate welded on Walraven RapidStrut® Profile
- slots at 90° to each other to simplify fixing
- CO₂ welded
- inward formed flanges with serrated profile for extra grip
- Type 41x41x2,5 tested for fire safety according EN1363-1
- material: stainless steel 1.4404 (AISI 316)
- for more information about the max. allowed load (Faz) please refer to the loading tables or our online datasheet 'Walraven RapidStrut® Data Sheet'



Product Number	VVS Number	Type	Length	Total Height	Total Width	Total Length	Material Thickness	Anchoring Slot	Profile Opening	Heart To Heart Distance
Reference letter			<i>l</i>	<i>H</i>	<i>W</i>	<i>L</i>	<i>MT</i>	<i>AS</i>	<i>S</i>	<i>k</i>
Unit description			mm	mm	mm	mm	mm	mm	mm	mm
6607861	018051315	41x41x2,5	150	130	48	158	8.00	30x13	22	87.5
6607870	018051320	41x41x2,5	200	130	48	208	8.00	30x13	22	87.5
6607862	018051230	41x41x2,5	300	130	45	308	8.00	30x13	22	87.5
6607874	018051340	41x41x2,5	400	130	48	408	8.00	30x13	22	87.5
6607863	018051245	41x41x2,5	450	130	45	458	8.00	30x13	22	87.5
6607873	018051350	41x41x2,5	500	130	48	508	8.00	30x13	22	87.5
6607864	018051260	41x41x2,5	600	130	45	600	8.00	30x13	22	87.5
6607865	018051375	41x41x2,5	750	130	48	758	8.00	30x13	22	87.5