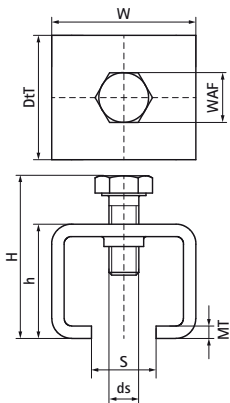
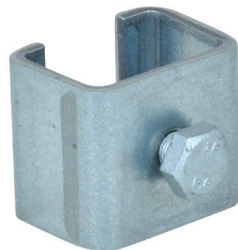


Walraven Clamp Slide

(B5521)

for sewer pipes



Features & benefits

- for the connection between the Foundation Bracket and the Foundation Clamp
- allows easy pipe slope control
- material: steel
- surface protection:
- product is part of the Walraven BIS UltraProtect® 1000 system
- suitable for in- and outdoor applications
- stands min. 1,000 hours salt spray test (max. 5% red rust) according to ISO 9227

Product Number	Total Width x Total Height x Total Depth	Height	Material Thickness	Profile Opening	Screw Size	Width Across Flats
Reference letter	W x H x DtT	h	MT	S	ds	WAF
Unit description	mm x mm x mm	mm	mm	mm		mm
4708003	29 x 23 x 25	23	2.50	13	M16	10