

20 000 892 Product version from 4/1/2024

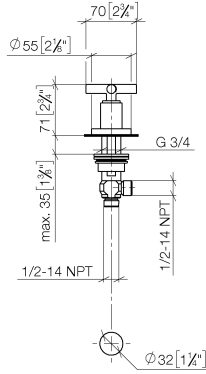


- hole diameter 32 mm
- rosette Ø 55 mm
- WRAS

|   |                                     |               |
|---|-------------------------------------|---------------|
|    | Matte Black                         | 20 000 892-33 |
|    | Chrome                              | 20 000 892-00 |
|    | Brushed Platinum                    | 20 000 892-06 |
|    | Platinum                            | 20 000 892-08 |
|    | Dark Chrome                         | 20 000 892-19 |
|    | Brushed Durabronze<br>(23kt Gold)   | 20 000 892-28 |
|    | Brushed Gold<br>(PVD)               | 20 000 892-37 |
|    | Brushed Dark<br>Brass (PVD)         | 20 000 892-39 |
|    | Brushed Dark<br>Bronze (PVD)        | 20 000 892-43 |
|   | Brushed<br>Champagne (22kt<br>Gold) | 20 000 892-46 |
|  | Champagne (22kt<br>Gold)            | 20 000 892-47 |
|  | Brushed Chrome                      | 20 000 892-93 |
|  | Brushed Dark<br>Platinum            | 20 000 892-99 |

20 000 892 Product version from 4/1/2024

mm [inches]



Flow rate chart



Codes & Standards

ASME A112.18.1

cUPC

Scottish Water  
Byelaws

UK Water Supply  
Regulations



## TARA Deck valve clockwise closing cold or hot - Matte Black

TARA

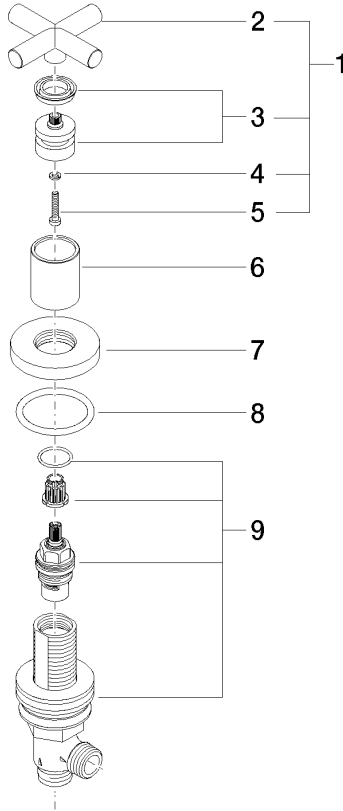
20 000 892 Product version from 4/1/2024

### Certificates and sustainability

|           |            |  |
|-----------|------------|--|
| WRAS_2112 | IAPMO_4976 | EPD-DOR-20230287<br>-IBA1-EN<br>Environmental.prod<br>uct-declarat |
|-----------|------------|--|

20 000 892 Product version from 4/1/2024

Parts for other finishes can be found here: [Chrome](#)



**Spare parts list**

| No.  | Item Number        | Name  | Quantity used | Delivery time |
|--|--------------------|---|---------------|---------------|
| 7  | 09 27 89 105-33    | Rosette Ø 55 x Ø 47,3 x 9 mm - Matte Black                                | 1.00          | 40            |
| 2  | 09 20 89 010-33    | Handle 70 x 70 x 22,5 mm - Matte Black                                    | 1.00          | -             |
| Spare part can no longer be ordered, please order the replacement item |                    |   |               |               |
|  | 90208901010-33     | Handle TARA - Matte Black   |               |               |
| 9  | 90 17 11 040 31 90 | Deck valve clockwise closing 1/2" -                                       | 1.00          | 14            |
| 8  | 90 14 10 043 00 90 | O-Ring 40,0 x 4,0 mm -  | 1.00          | 14            |
| 1  | 90 20 89 010 10-33 | Handle TARA - Matte Black   | 1.00          | 40            |
| 3  | 90 12 12 007 00-33 | Handle Socket retainer Ø 29 x 26 mm - Matte Black                         | 1.00          | 40            |
| 6  | 09 21 02 140-33    | Cover Ø 30 x 36 mm - Matte Black  | 1.00          | 40            |
| 5  | 90 30 30 075 00 90 | Mounting Cylinder head screw with hexagon socket Low profile M4 x 20 mm - | 1.00          | 14            |
| 4  | 90 30 11 029 00 90 | Connection Spring lock washer Ø 4 -                                       | 1.00          | 14            |