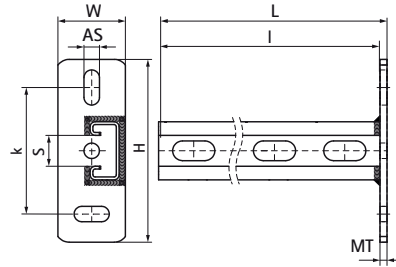
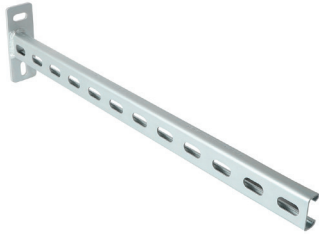


## Walraven RapidStrut® Cantilever Arm Vertical (BUP1000)

(H0807)

special profile for shaft installation



### Features & benefits

- vertical welded cantilever arm for vertical pipe installations
- perfect solution for shaft situations with or without wall
- optimal utilization of the available space in shafts
- CO<sub>2</sub> welded
- inward formed flanges with serrated profile for extra grip
- material: steel 1.0226
- product is part of the Walraven Walraven UltraProtect® 1000 system
- suitable for in- and outdoor applications
- stands min. 1,000 hours salt spray test (max. 5% red rust) according to ISO 9227

Product Number	Type	Length	Total Width x Total Height x Total Length	Material Thickness	Anchoring Slot	Profile Opening	Heart To Heart Distance
Reference letter		<i>l</i>	<i>W x H x L</i>	<i>MT</i>	<i>AS</i>	<i>S</i>	<i>k</i>
Unit description		<i>mm</i>	<i>mm x mm x mm</i>	<i>mm</i>	<i>mm</i>	<i>mm</i>	<i>mm</i>
6603828	41x21x2,5	300	48 x 130 x 305	5.00	25x11	22	90
6603829	41x21x2,5	600	48 x 130 x 605	5.00	25x11	22	90